

Sunday

Monday

Tuesday

Wednesday

Thursday

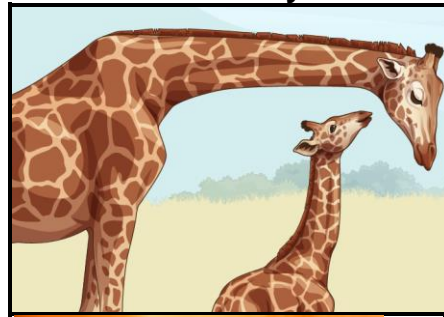
Friday

Saturday

ACTIVITIES ARE SUBJECT TO CHANGE

June 2024

SNU CALENDAR



7:15-FISHING/LAKE (SR'S ONLY) (WEATHER PERMITTING)
1:00-2:00 CLOTHING RM
1:30-MOVIE/SNACKS(REC)
"ARTHUR THE KING"



2 9:00-11 UNIT ACTIVITIES 3
10:30-CR. JOURNALING/AR
1:30-COPING STRATEGIES (E2 FR)
1:00-PET THERAPY VISITS WITH SKY AND ANGEL
1:30-BARBER ON UNIT

11:30-UNIT VISITS
1:30-UNDERSTANDING OUR MINDS (E2 FR)
2:00-GROUP MEETING
2:30-BIRTHDAY BINGO

4 9:45-PICNIC IN THE PARK (SR'S ONLY)
1:30-DISCHARGE PLANNING (E2 FR)
2:00-ICE CREAM TRUCK
PICNIC IN THE PARK

5 10:00-CORNHOLE/GOOD SHEPHERD HOSPICE (REC)
10:00-CANDID CONVERSATIONS (E2 FR)
1:30-CHAMPION CUTTING QUARTER HORSES (FRONT PARKING LOT)

6 10:00-CHURCH
1:00-YOUR OWN HANDS-AR
2:00-GROUP MEETING
2:30-DONUT SOCIAL

7 11:00-MAIL CALL
1:00-2:00 CLOTHING RM

9 **MAINTENANCE/FIRE AND SAFETY/SUPPLY APPRECIATION WEEK JUNE 8-12**

9:30-BEDSIDES & 1:1'S
10:30-CR. JOURNALING/AR
1:30-COPING STRATEGIES (E2 FR)
1:30-CHECKER TOURNAMENT (REC)

10 11:30-UNIT VISITS
1:30-UNDERSTANDING OUR MINDS (E2 FR)
2:00-GROUP MEETING
2:30-MAINTENANCE/FIRE AND SAFETY/SUPPLY APPRECIATION PARTY
Shavuot Begins

11 8:30-SHOPPING
1:30-DISCHARGE PLANNING (E2 FR)
1:30-FRIED PIE SHOP/DAVIS (SR'S ONLY)
3:30-UNIT VISITS

12 10:00-CANDID CONVERSATIONS (E2 FR)
11:30-UNIT VISITS
1:00-NOT JUST COUNTRY LINE DANCERS

13 10:00-CHURCH
1:00-YOUR OWN HANDS-AR
2:00-GROUP MEETING
5:00-ELK'S FATHER'S DAY STEAK DINNER (AUD)

14 11:00-MAIL CALL
1:00-2:00 CLOTHING RM



16 10:00-RESIDENT COUNCIL MEETING (AUD)
10:30-CR. JOURNALING/AR
1:30-COPING STRATEGIES (E2 FR)
1:30-BARBER ON UNIT
2:00-ART CLASS (AR)

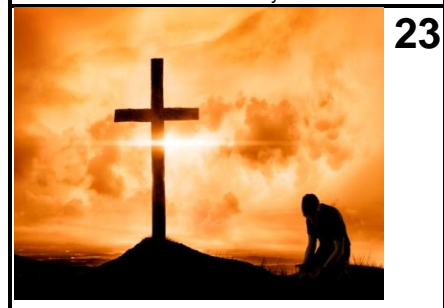
17 11:00-UNIT HOTDOG COOKOUT ON THE PATIO
1:30-UNDERSTANDING OUR MINDS (E2 FR)
1:00-DAR BINGO
2:00-GROUP MEETING

18 8:15-OKC DODGERS BASEBALL GAME (OKC) (SR'S ONLY)
1:30-DISCHARGE PLANNING (E2 FR)

19 10:00-CANDID CONVERSATIONS (E2 FR)
2:00-ICE CREAM SOCIAL
6:00-BEYOND BROTHERHOOD BINGO

20 10:00-CHURCH
1:00-YOUR OWN HANDS-AR
1:00-TREASURE VALLEY CASINO (SRS ONLY)
2:00-GROUP MEETING

21 11:00-MAIL CALL
1:00-2:00 CLOTHING RM



23 10:30-CR. JOURNALING/AR
1:30-COPING STRATEGIES
1:00-SNOW CONES(PATIO)

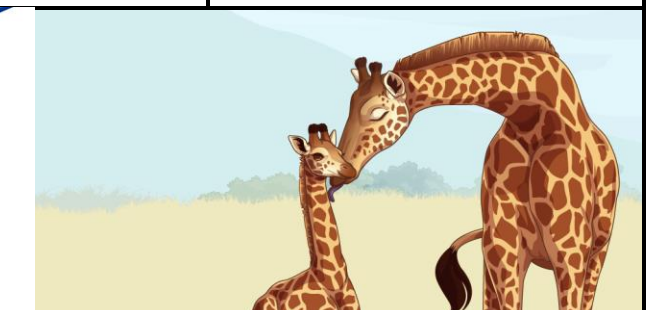
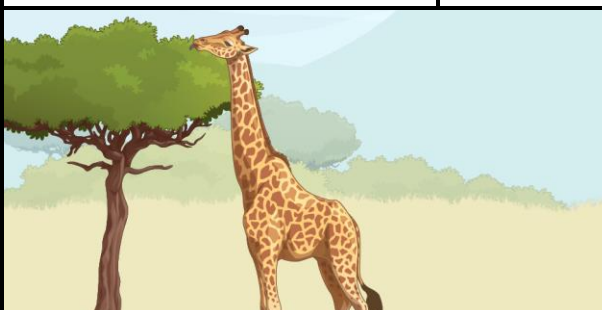
24 9:30-NATIONAL COWBOY/WESTERN HERITAGE MUSEUM (OKC) (SR'S ONLY)
1:30-UNDERSTANDING OUR MINDS (E2 FR)
2:00-GROUP MEETING

25 8:30-SHOPPING
1:30-DISCHARGE PLANNING (E2 FR)
3:30-UNIT VISITS

26 10:00-OFF TO THE RACES W/CHOICE HOSPICE (REC)
10:00-CANDID CONVERSATIONS (E2 FR)
3:30-UNIT VISITS

27 9-11:00 UNIT ACTIVITIES
1:00-YOUR OWN HANDS-AR
2:00-GROUP MEETING
2:00-BJ HOWARD SINGING

28 9-10:00 CLOTHING RM
1:00-MAIL CALL
2:00-COOTIES BINGO



SIGN UP SHEETS ARE LOCATED IN THE SIGN-UP BOOK ON THE UNIT. YOU MUST SIGN UP IF YOU WANT TO GO ON OUTINGS!