

Sunday

Monday

Tuesday

Wednesday

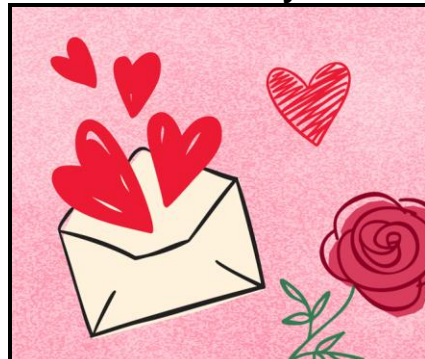
Thursday

Friday

Saturday

ACTIVITIES ARE SUBJECT TO CHANGE!!!

February 2025 SULPHUR VETERANS CENTER



9:00-11:00 UNIT VISITS
1:00-2:00 CLOTHING RM

DIETARY APPRECIATION WEEK FEBRUARY 3-7

Let's get Cooking!

8:30-E1 SHOP (NORTH)
9:30-BEDSIDES & 1:1'S
10:30-CR. JOURNALING/AR
1:00-PET THERAPY WITH BENNY (E1/E2)
1:30-COPING STRATEGIES (E2 FR)
2:30-SNACK CART(W1/W2)

10:45-EL JIMADOR MEXICAN RESTAURANT

1:30-UNDERSTANDING OUR MINDS (E2 FR)
 2:00-SNU GROUP MEETING
 2:30-BIRTHDAY BINGO

8:30-W1 SHOPPING
1:00-E2 SHOPPING
1:30-EMPOWERU LIFE SKILLS (E2 FR)

10:00-CHURCH
10:00-CANDID CONVERSATIONS (E2 FR)

RECREATION CLEANING AND ORGANIZING DAY!

NATIONAL WEAR RED DAY

1:00-YOUR OWN HANDS-AR
 2:00-SNU GROUP MEETING

RECREATION CLEANING AND ORGANIZING DAY!

9:00-11:00 UNIT VISITS
 1:00-2:00 CLOTHING RM

5:30-SUPERBOWL PARTY

900-200-BARBER SHOP
10:30-CR. JOURNALING/AR
1:00-PET THERAPY WITH ANGEL & SKY (W1/W2)
1:30-COPING STRATEGIES (E2 FR)
2:30-SNACK CART (E1/E2)

8:30-W2 SHOP (SOUTH)
1:30-UNDERSTANDING OUR MINDS (E2 FR)
2:00-SNU GROUP MEETING
2:30-BINGO

9:30-DONUT SOCIAL WITH ELARA HOSPICE

1:30-EMPOWERU LIFE SKILLS (E2 FR)
 1:30-BEDRE'S CHOCOLATE FACTORY (DAVIS)

10:00-CHURCH
10:00-CANDID CONVERSATIONS (E2 FR)
1:00-PET THERAPY WITH ANGEL & SKY (E1/E2)
2:00-W2 UNIT ACTIVITY
2:30-W1 UNIT ACTIVITY

9:30-KARAOKE/RH
 1:00-YOUR OWN HANDS-AR
 2:00-SNU GROUP MEETING
2:30-VALENTINE'S PARTY

9:00-11:00 UNIT VISITS
 1:00-2:00 CLOTHING RM

Celebrate the Lord's Day

Presidents' Day

8:30-E2 SHOPPING
1:30-UNDERSTANDING OUR MINDS (E2 FR)
2:00-SNU GROUP MEETING
2:30-ART TIME/AR

8:30-W1 SHOPPING
1:00-DIETARY APPRECIATION PARTY
1:30-EMPOWERU LIFE SKILLS (E2 FR)

8:30-E1 SHOP (SOUTH)
10:00-CHURCH
10:00-CANDID CONVERSATIONS (E2 FR)
1:00-W1 UNIT ACTIVITY
2:00-W2 UNIT ACTIVITY
3:00-E1 UNIT ACTIVITY

9:30-VOLLEYBALL/RH
1:00-GOSPEL SINGING
 1:00-YOUR OWN HANDS-AR
 2:00-SNU GROUP MEETING

11:00-ITALIAN LUNCH PROVIDED BY THE AMERICAN VETERANS MOTORCYCLE CLUB
2:00-3:00 CLOTHING RM

CELEBRATING BLACK HISTORY MONTH

900-200-BARBER SHOP
9:30-NOODLEBALL/RH
10:00-RESIDENT COUNCIL MEETING
10:30-CR. JOURNALING/AR
1:00-PET THERAPY WITH BENNY (W1/W2)
1:30-COPING STRATEGIES (E2 FR)

10:15-SANTA FE STEAKHOUSE (ADA)

1:30-UNDERSTANDING OUR MINDS (E2 FR)
 2:00-SNU GROUP MEETING

8:30-W2 SHOP (NORTH)
1:30-EMPOWERU LIFE SKILLS (E2 FR)
2:00-ACTIVITY WITH GOOD SHEPHERD HOSPICE

10:00-CHURCH
10:00-CANDID CONVERSATIONS (E2 FR)
1:00-POPCORN/MOVIE/RH
6:00-BINGO

10:00-OFF TO RACES W/CHOICE HOSPICE/REC
1:00-YOUR OWN HANDS-AR
2:00-SNU GROUP MEETING
2:00-WAYNE GIBBS MUSIC

SIGN UP SHEETS FOR OUTINGS ARE LOCATED ON THE BULLETIN BOARDS ON THE UNITS. YOU MUST SIGN UP IF YOU WANT TO GO!!