

SENATE DISTRICT 26

SENATOR Darcy Jech

COUNTIES Blaine Caddo Canadian Custer Kingfisher



These TSET grants work with local community partners to help prevent cancer and cardiovascular disease by reducing tobacco use and obesity.

\$2,368,304 invested in your district FY21-FY26 **\$3,991,192** invested in your district FY16-FY20

Grantees FY21-FY26

Canadian County Health Department	\$763,886	Kingfisher County Health Department	\$728,163
Great Plains Youth & Family Services	\$876,255	Serving Blaine and Kingfisher counties (FY21 - FY24)	
Serving Caddo and Kiowa counties		Serving Kingfisher County (FY25)	



These TSET grants are for schools, school districts and local communities to promote wellness through policies and strategies that encourage healthy eating, physical activity and tobacco-free lifestyles.

\$236,000 total invested in your district

Healthy Communities Incentive Grants

City of Anadarko	\$10,000
City of Weatherford	\$50,000
Town of Okeene	\$22,000

Healthy Schools Incentive Grants

Anadarko Public Schools	\$25,000	Hydro-Eakly Public Schools	\$3,000
Clinton Public Schools	\$30,000	Lomega Public Schools	\$3,000
Darlington Public School	\$8,000	Okarche Public Schools	\$3,000
Dover Public Schools	\$15,000	Okeene Public Schools	\$25,000
El Reno Public Schools	\$10,000	Watonga Public Schools	\$2,000



These TSET grants provided food during the pandemic and support partnerships that seek to increase the availability of healthy foods.

District Cumulative: **\$214,178**

Grantees

Regional Food Bank of Oklahoma	\$96,544
Serving Oklahoma, Canadian, Cleveland and Tillman counties	
RSVP Enid	\$117,634
Serving Alfalfa, Garfield, Grant, Kay, Kingfisher, Major, Noble and Woodward counties	



These TSET grants support communities and nonprofits in a variety of projects to improve health in local communities.



District Cumulative: **\$637,650**

Grantees

Town of Fort Cobb	\$500,000
Youth & Family Services, Inc.	\$137,650
Serving Blaine, Canadian, Kingfisher and Oklahoma counties	

Oklahoma Tobacco Helpline

1 800 QUIT NOW

1-800-784-8669 **OKhelpline.com**

A Program of TSET

TOTAL REGISTRATIONS:

District FY25:

437

District Cumulative:

9,941

The Oklahoma Tobacco Helpline provides free telephone and web-based Coaching sessions and free nicotine patches, gum and lozenges to all Oklahomans each year, 24/7.

State Cumulative:

OVER 630,000

OU HEALTH STEPHENSON CANCER CENTER

District Participation 2012-2025:

384*

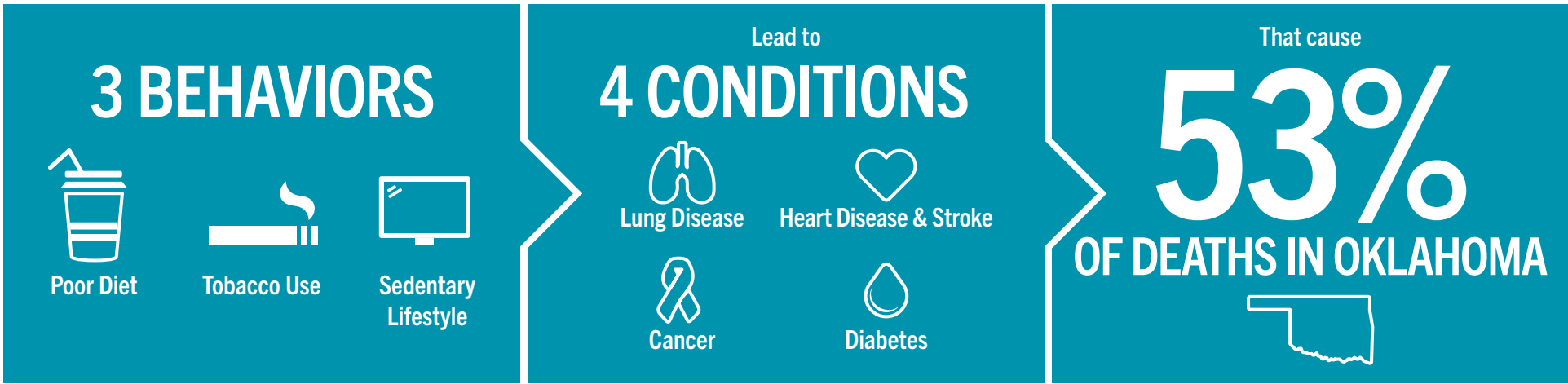
TSET funds cancer treatment and research at OU Health Stephenson Cancer Center in support of TSET's mission to decrease the burden of cancer by promoting, coordinating and supporting innovative cancer research that allows Oklahomans of all ages to receive cutting-edge care without leaving the state.

*Patients who have participated in interventional clinical trials at OU Health Stephenson Cancer Center.



405.521.3888 | Oklahoma.gov/TSET
 Board of Directors Chair Jennifer Needham, J.D.
 Interim Executive Director Lance Thomas

TSET'S MISSION: TO REDUCE PREVENTABLE DEATH IN OKLAHOMA.



TSET INVESTS IN:

- Tobacco Cessation
- Physical Activity
- Improving Nutrition
- Medical Access and Research

IN OKLAHOMA:

OBESITY:

\$1.72 BILLION

IN MEDICAL EXPENDITURES EACH YEAR

- 1 IN 6 HIGH SCHOOL STUDENTS IS OBESE
- 1 IN 6 HIGH SCHOOL STUDENTS IS OVERWEIGHT
- 1 IN 3 ADULTS IS OBESE

SMOKING:

\$1.88

- 7,500 ADULT DEATHS EACH YEAR
- 8,400 KIDS (UNDER 18) TRY CIGARETTES FOR THE FIRST TIME EACH YEAR
- \$149 MILLION IS SPENT BY THE TOBACCO INDUSTRY ANNUALLY TO MARKET TOBACCO IN OKLAHOMA

MOVING THE NEEDLE:

ADULT SMOKING PREVALENCE

28.6%

14.1% 2024

SMOKING CUT IN HALF

NEARLY **\$855 MILLION** ADDITIONAL RESEARCH DOLLARS LEVERAGED AFTER TSET'S INVESTMENT

MORE THAN **630,000** REGISTRATIONS TO THE OKLAHOMA TOBACCO HELPLINE

THROUGH THE HEALTH CARE WORKFORCE TRAINING COMMISSION, **141 PHYSICIANS** HAVE OR ARE CURRENTLY PRACTICING IN RURAL AND UNDERSERVED AREAS OF OKLAHOMA