

# HOUSE DISTRICT 21

**REPRESENTATIVE** Cody Maynard

**COUNTIES** Bryan Marshall



These TSET grants work with local community partners to help prevent cancer and cardiovascular disease by reducing tobacco use and obesity.

**\$197,000** invested in your district FY21-FY26

**\$2,376,450** invested in your district FY16-FY20

**Grantees FY21-FY26**

Bryan County Health Department ..... **\$87,000** Marshall County Health Department ..... **\$110,000**



These TSET grants are for schools, school districts and local communities to promote wellness through policies and strategies that encourage healthy eating, physical activity and tobacco-free lifestyles.

**\$180,500** total invested in your district

**Healthy Communities Incentive Grants**

City of Durant ..... **\$100,000**

**Healthy Schools Incentive Grants**

Achille Public Schools ..... **\$3,000** Colbert Public Schools ..... **\$4,500**  
 Calera Public Schools ..... **\$53,000** Silo Public Schools ..... **\$20,000**



These TSET grants support communities and nonprofits in a variety of projects to improve health in local communities.

**District Cumulative: \$500,000**

**Grantees**

Lighthouse Behavioral Wellness Centers, Inc. .... **\$500,000**  
 Serving Bryan, Carter, Garvin, Johnston, Love, Marshall, Murray, Pontotoc and Seminole counties

Oklahoma Tobacco Helpline  
**1 800 QUIT NOW**  
 1-800-784-8669 **OKhelpline.com**

A Program of TSET

**TOTAL REGISTRATIONS:**

District FY25:

**343**

District Cumulative:

**5261**

The Oklahoma Tobacco Helpline provides free telephone and web-based Coaching sessions and free nicotine patches, gum and lozenges to all Oklahomans each year, 24/7.

State Cumulative:

**OVER 630,000**

**OU HEALTH STEPHENSON CANCER CENTER**

District Participation 2012-2025:

**33\***

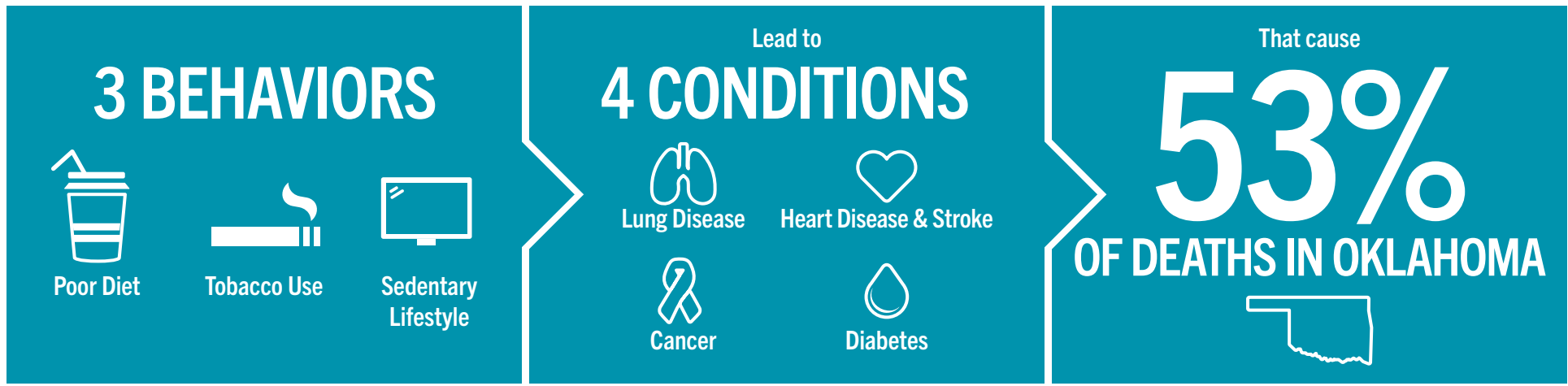
TSET funds cancer treatment and research at OU Health Stephenson Cancer Center in support of TSET's mission to decrease the burden of cancer by promoting, coordinating and supporting innovative cancer research that allows Oklahomans of all ages to receive cutting-edge care without leaving the state.

\*Patients who have participated in interventional clinical trials at OU Health Stephenson Cancer Center.



405.521.3888 | Oklahoma.gov/TSET  
 Board of Directors Chair Jennifer Needham, J.D.  
 Interim Executive Director Lance Thomas

# TSET'S MISSION: TO REDUCE PREVENTABLE DEATH IN OKLAHOMA.



**TSET INVESTS IN:**

- Tobacco Cessation
- Physical Activity
- Improving Nutrition
- Medical Access and Research

## IN OKLAHOMA:

**OBESITY:**

**\$1.72 BILLION**

IN MEDICAL EXPENDITURES EACH YEAR

- 1 IN 6 HIGH SCHOOL STUDENTS IS OBESE
- 1 IN 6 HIGH SCHOOL STUDENTS IS OVERWEIGHT
- 1 IN 3 ADULTS IS OBESE

**SMOKING:**

**\$1.88**

- 7,500 ADULT DEATHS EACH YEAR
- 8,400 KIDS (UNDER 18) TRY CIGARETTES FOR THE FIRST TIME EACH YEAR
- \$149 MILLION IS SPENT BY THE TOBACCO INDUSTRY ANNUALLY TO MARKET TOBACCO IN OKLAHOMA

## MOVING THE NEEDLE:

**ADULT SMOKING PREVALENCE**

28.6%

14.1% 2024

**SMOKING CUT IN HALF**

NEARLY **\$855 MILLION** ADDITIONAL RESEARCH DOLLARS LEVERAGED AFTER TSET'S INVESTMENT

MORE THAN **630,000** REGISTRATIONS TO THE OKLAHOMA TOBACCO HELPLINE

THROUGH THE HEALTH CARE WORKFORCE TRAINING COMMISSION, **141 PHYSICIANS** HAVE OR ARE CURRENTLY PRACTICING IN RURAL AND UNDERSERVED AREAS OF OKLAHOMA