

SENATE DISTRICT 26

SENATOR Darcy Jech

COUNTIES Blaine Caddo Canadian Custer Kingfisher



These TSET grants work with local community partners to help prevent cancer and cardiovascular disease by reducing tobacco use and obesity.

\$2,271,112 invested in your district FY21-FY25

\$3,991,192 invested in your district FY16-FY20

Grantees FY21-FY25

Great Plains Youth and Family Services <i>Serving Caddo and Kiowa counties</i>	\$774,232
Kingfisher County Health Department	\$732,994

Grantees FY21-FY24

Canadian County Health Department	\$763,886
-----------------------------------	------------------



These TSET grants are for schools, school districts and local communities to promote wellness through policies and strategies that encourage healthy eating, physical activity and tobacco-free lifestyles.

\$216,500 total invested in your district

Healthy Communities Incentive Grants

City of Anadarko	\$10,000	Town of Okeene	\$22,000
City of Weatherford	\$50,000		

Healthy Schools Incentive Grants

Anadarko Public Schools	\$25,000	Okarche Public Schools	\$3,000
Clinton Public Schools	\$15,500	Okeene Elementary School	\$2,500
Darlington Public School	\$8,000	Okeene Junior High School	\$2,500
Dover Public School	\$15,000	Okeene Public Schools	\$15,000
El Reno Public Schools	\$10,000	Watonga Public Schools	\$2,000
Hydro-Eakly Public Schools	\$3,000	Weatherford Public Schools	\$30,000
Lomega Public Schools	\$3,000		



These TSET grants provided food during the pandemic and support partnerships that seek to increase the availability of healthy foods.

District Cumulative: **\$214,178**

Grantees

Regional Food Bank of Oklahoma <i>Serving Oklahoma, Canadian, Cleveland and Tillman counties</i>	\$96,544
RSVP Enid <i>Serving Alfalfa, Garfield, Grant, Kay, Kingfisher, Major, Noble and Woodward counties</i>	\$117,634

TSET Discovery Grants and TSET Built Environment Grants

These TSET grants support communities and nonprofits in a variety of projects to improve health in local communities.

District Cumulative: **\$500,000**

Grantees

Town of Fort Cobb	\$500,000
-------------------	------------------

Oklahoma Tobacco Helpline

1 800

QUIT NOW

1-800-784-8669 OKhelpline.com

A Program of TSET

TOTAL REGISTRATIONS:

District FY24:

439

District Cumulative:

9,502

The Oklahoma Tobacco Helpline provides free telephone and web-based coaching sessions and free nicotine patches, gum and lozenges to all Oklahomans each year, 24/7.

State Cumulative:

OVER 600,000

STEPHENSON CANCER CENTER

District Participation
2012-2024:

345*

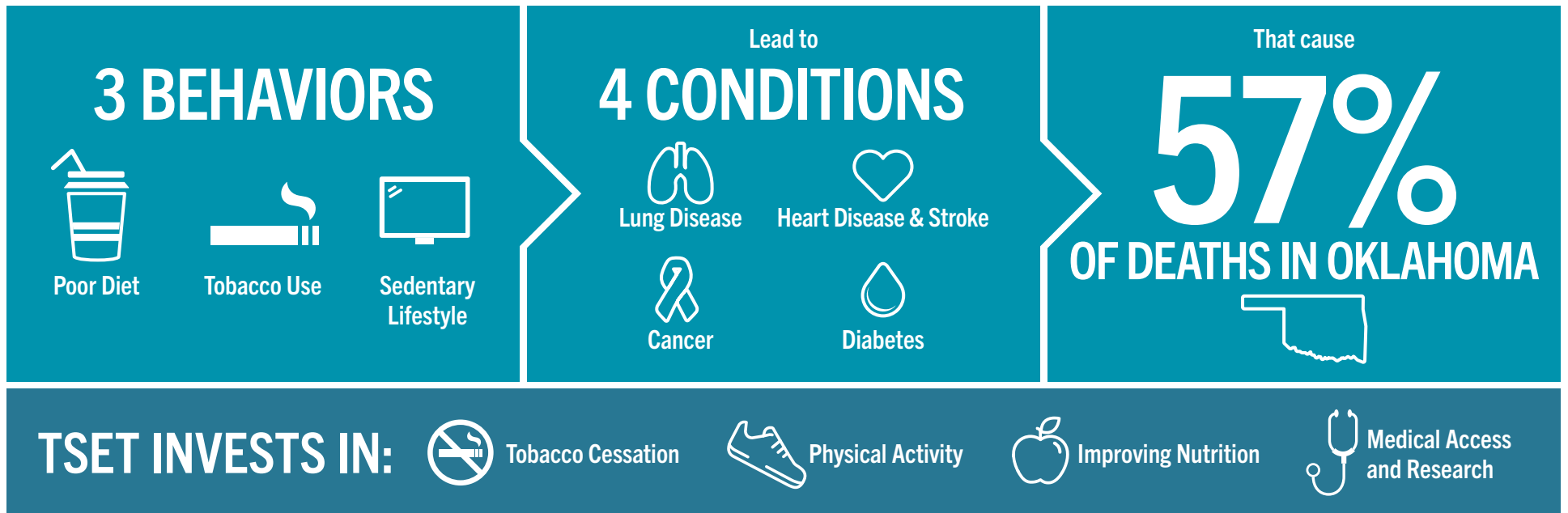
TSET funds cancer treatment and research at the Stephenson Cancer Center in support of TSET's mission to decrease the burden of cancer by promoting, coordinating and supporting innovative cancer research that allows Oklahomans of all ages to receive cutting-edge care without leaving the state.

*Patients that have participated in interventional clinical trials at the Stephenson Cancer Center



405.521.3888 | Oklahoma.gov/TSET
Board of Directors Chair Kenneth Rowe
Executive Director Julie Bisbee

TSET'S MISSION: TO REDUCE PREVENTABLE DEATH IN OKLAHOMA.



IN OKLAHOMA:

OBESITY:
\$1.72 BILLION
IN MEDICAL EXPENDITURES EACH YEAR

- 1 IN 6 HIGH SCHOOL STUDENTS IS OBESE
- 1 IN 6 HIGH SCHOOL STUDENTS IS OVERWEIGHT
- 1 IN 3 ADULTS IS OBESE

SMOKING:
\$1.88 BILLION
IN DIRECT HEALTHCARE COSTS EACH YEAR

- 7,500 ADULT DEATHS EACH YEAR
- 8,400 KIDS (UNDER 18) TRY CIGARETTES FOR THE FIRST TIME EACH YEAR
- \$149 MILLION IS SPENT BY THE TOBACCO INDUSTRY ANNUALLY TO MARKET TOBACCO IN OKLAHOMA

MOVING THE NEEDLE:

ADULT SMOKING PREVALENCE

2001: 28.6%

2023: 15.8%

SMOKING AMONG KIDS CUT IN HALF

NEARLY **\$757 MILLION** ADDITIONAL RESEARCH DOLLARS LEVERAGED AFTER TSET'S INVESTMENT

MORE THAN **620,000** PEOPLE SERVED BY THE OKLAHOMA TOBACCO HELPLINE

THROUGH THE HEALTH CARE WORKFORCE TRAINING COMMISSION, **120 PHYSICIANS** HAVE OR ARE CURRENTLY PRACTICING IN RURAL AND UNDERSERVED AREAS OF OKLAHOMA