

# HOUSE DISTRICT 59

REPRESENTATIVE Mike Dobrinski

COUNTIES Blaine Dewey Garfield Kingfisher Woodward



These TSET grants work with local community partners to help prevent cancer and cardiovascular disease by reducing tobacco use and obesity.

**\$1,938,133** invested in your district FY21-FY25

**\$3,017,726** invested in your district FY16-FY20

### Grantees FY21-FY25

Kingfisher County Health Department	\$732,994
Rural Health Projects, Inc	\$1,205,139
Serving Garfield County	



These TSET grants are for schools, school districts and local communities to promote wellness through policies and strategies that encourage healthy eating, physical activity and tobacco-free lifestyles.

**\$94,000** total invested in your district

### Healthy Communities Incentive Grants

City of Woodward	\$26,000
Town of Okeene	\$22,000

### Healthy Schools Incentive Grants

Dover Public Schools	\$15,000	Okeene Junior High School	\$2,500
Lomega Public School	\$3,000	Okeene Public Schools	\$15,000
Okarche Public Schools	\$3,000	Watonga Public Schools	\$2,000
Okeene Elementary School	\$2,500	Waukomis Public School	\$3,000

These TSET grants provided food during the pandemic and support partnerships that seek to increase the availability of healthy foods.

District Cumulative: **\$117,634**

### Grantees

RSVP Enid	\$117,634
Serving Alfalfa, Garfield, Grant, Kay, Kingfisher, Major, Noble and Woodward counties	



A Program of TSET

### TOTAL REGISTRATIONS:

District FY24:

**174**

District Cumulative:

**4,144**

The Oklahoma Tobacco Helpline provides free telephone and web-based coaching sessions and free nicotine patches, gum and lozenges to all Oklahomans each year, 24/7.

State Cumulative:

**OVER 600,000**

## STEPHENSON CANCER CENTER

District Participation 2012-2024:

**259\***

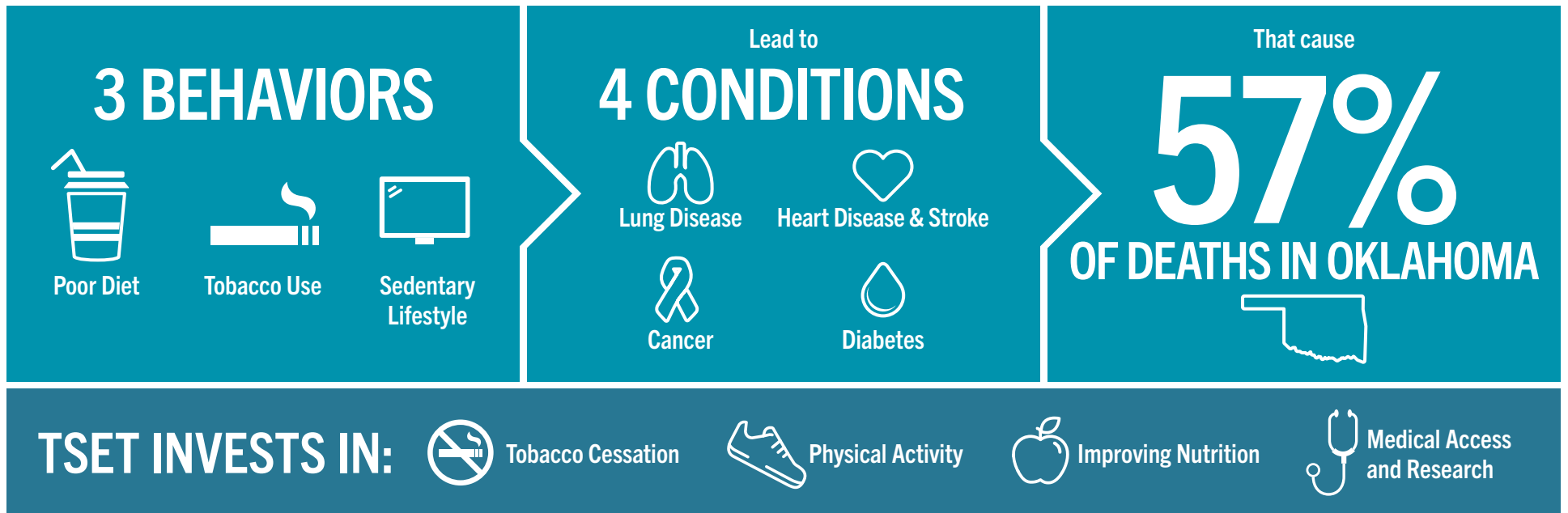
TSET funds cancer treatment and research at the Stephenson Cancer Center in support of TSET's mission to decrease the burden of cancer by promoting, coordinating and supporting innovative cancer research that allows Oklahomans of all ages to receive cutting-edge care without leaving the state.

\*Patients that have participated in interventional clinical trials at the Stephenson Cancer Center



405.521.3888 | Oklahoma.gov/TSET  
Board of Directors Chair Kenneth Rowe  
Executive Director Julie Bisbee

# TSET'S MISSION: TO REDUCE PREVENTABLE DEATH IN OKLAHOMA.



## IN OKLAHOMA:

**OBESITY:**  
**\$1.72 BILLION**  
IN MEDICAL EXPENDITURES EACH YEAR

- 1 IN 6 HIGH SCHOOL STUDENTS IS OBESE
- 1 IN 6 HIGH SCHOOL STUDENTS IS OVERWEIGHT
- 1 IN 3 ADULTS IS OBESE

**SMOKING:**  
**\$1.88 BILLION**  
IN DIRECT HEALTHCARE COSTS EACH YEAR

- 7,500 ADULT DEATHS EACH YEAR
- 8,400 KIDS (UNDER 18) TRY CIGARETTES FOR THE FIRST TIME EACH YEAR
- \$149 MILLION IS SPENT BY THE TOBACCO INDUSTRY ANNUALLY TO MARKET TOBACCO IN OKLAHOMA

## MOVING THE NEEDLE:

**ADULT SMOKING PREVALENCE**

2001: 28.6%

2023: 15.8%

**SMOKING AMONG KIDS CUT IN HALF**

NEARLY **\$757 MILLION** ADDITIONAL RESEARCH DOLLARS LEVERAGED AFTER TSET'S INVESTMENT

MORE THAN **620,000** PEOPLE SERVED BY THE OKLAHOMA TOBACCO HELPLINE

THROUGH THE HEALTH CARE WORKFORCE TRAINING COMMISSION, **120 PHYSICIANS** HAVE OR ARE CURRENTLY PRACTICING IN RURAL AND UNDERSERVED AREAS OF OKLAHOMA