

HOUSE DISTRICT 48

REPRESENTATIVE Tammy Townley

COUNTIES Carter Garvin Murray



These TSET grants work with local community partners to help prevent cancer and cardiovascular disease by reducing tobacco use and obesity.

\$1,637,838 invested in your district FY21-FY25

\$2,102,066 invested in your district FY16-FY20

Grantees FY21-FY25

Wichita Mountains Prevention Network Serving Carter County	\$731,281
McClain-Garvin County Youth & Family Center, Inc. DBA Frontline Family Solutions Serving Garvin County	\$906,557



These TSET grants are for schools, school districts and local communities to promote wellness through policies and strategies that encourage healthy eating, physical activity and tobacco-free lifestyles.

\$67,000 total invested in your district

Healthy Communities Incentive Grants

City of Ardmore	\$10,000
City of Springer	\$20,000

Healthy Schools Incentive Grants

Ardmore Public Schools	\$10,000	Springer Elementary School	\$1,000
Davis Public Schools	\$20,000	Springer Middle School/High School	\$1,000
Lincoln Elementary School	\$2,000	Springer Public Schools	\$3,000

These TSET grants support communities and nonprofits in a variety of projects to improve health in local communities.

District Cumulative: \$490,750

TSET Discovery Grants and TSET Built Environment Grants

Grantees

City of Pauls Valley	\$90,750
City of Pauls Valley	\$150,000
Lighthouse Behavioral Wellness Centers, Inc.	\$250,000
Serving Bryan, Carter, Garvin, Johnston, Love, Marshall, Murray, Pontotoc and Seminole counties	



A Program of TSET

TOTAL REGISTRATIONS:

District FY24:

346

District Cumulative:

6,961

The Oklahoma Tobacco Helpline provides free telephone and web-based coaching sessions and free nicotine patches, gum and lozenges to all Oklahomans each year, 24/7.

State Cumulative:

OVER 600,000

STEPHENSON CANCER CENTER

District Participation 2012-2024:

95*

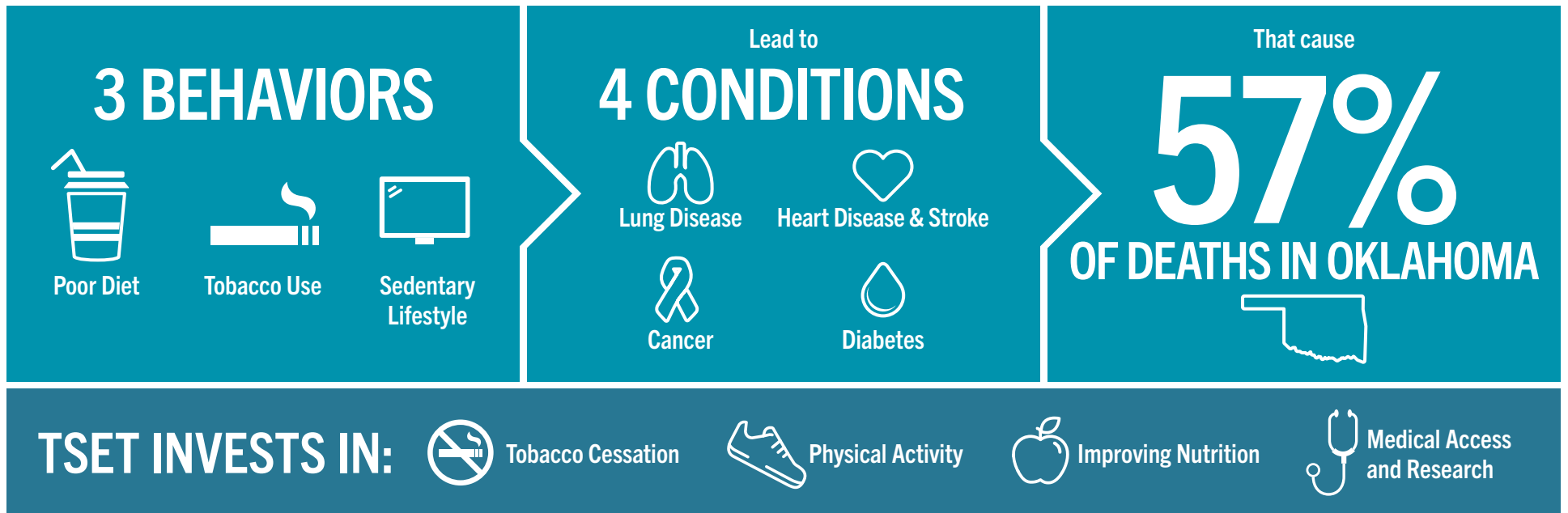
TSET funds cancer treatment and research at the Stephenson Cancer Center in support of TSET's mission to decrease the burden of cancer by promoting, coordinating and supporting innovative cancer research that allows Oklahomans of all ages to receive cutting-edge care without leaving the state.

*Patients that have participated in interventional clinical trials at the Stephenson Cancer Center



405.521.3888 | Oklahoma.gov/TSET
Board of Directors Chair Kenneth Rowe
Executive Director Julie Bisbee

TSET'S MISSION: TO REDUCE PREVENTABLE DEATH IN OKLAHOMA.



IN OKLAHOMA:

OBESITY:
\$1.72 BILLION
IN MEDICAL EXPENDITURES EACH YEAR

- 1 IN 6 HIGH SCHOOL STUDENTS IS OBESE
- 1 IN 6 HIGH SCHOOL STUDENTS IS OVERWEIGHT
- 1 IN 3 ADULTS IS OBESE

SMOKING:
\$1.88 BILLION
IN DIRECT HEALTHCARE COSTS EACH YEAR

- 7,500 ADULT DEATHS EACH YEAR
- 8,400 KIDS (UNDER 18) TRY CIGARETTES FOR THE FIRST TIME EACH YEAR
- \$149 MILLION IS SPENT BY THE TOBACCO INDUSTRY ANNUALLY TO MARKET TOBACCO IN OKLAHOMA

MOVING THE NEEDLE:

ADULT SMOKING PREVALENCE

2001: 28.6%

2023: 15.8%

SMOKING AMONG KIDS CUT IN HALF

NEARLY **\$757 MILLION** ADDITIONAL RESEARCH DOLLARS LEVERAGED AFTER TSET'S INVESTMENT

MORE THAN **620,000** PEOPLE SERVED BY THE OKLAHOMA TOBACCO HELPLINE

THROUGH THE HEALTH CARE WORKFORCE TRAINING COMMISSION, **120 PHYSICIANS** HAVE OR ARE CURRENTLY PRACTICING IN RURAL AND UNDERSERVED AREAS OF OKLAHOMA