

HOUSE DISTRICT 33

REPRESENTATIVE Molly Jenkins

COUNTIES Logan Payne



These TSET grants work with local community partners to help prevent cancer and cardiovascular disease by reducing tobacco use and obesity.

\$1,178,069 invested in your district FY21-FY25

\$2,881,310 invested in your district FY16-FY20

Grantees FY21-FY25

Oklahoma State University - Department of Wellness - Sponsored Programs **\$1,178,069**
Serving Payne County



These TSET grants are for schools, school districts and local communities to promote wellness through policies and strategies that encourage healthy eating, physical activity and tobacco-free lifestyles.

\$110,500 total invested in your district

Healthy Communities Incentive Grants

City of Yale **\$10,000**
Town of Langston City **\$10,000**

Healthy Schools Incentive Grants

Coyle Elementary School \$1,500	Stillwater Junior High School \$5,000
Coyle High School \$1,000	Stillwater Public Schools \$30,000
Coyle Public Schools \$3,000	Stillwater Middle School \$5,000
Ripley Public Schools \$15,000	Yale Public Schools \$15,000
Stillwater High School \$15,000	

These TSET grants support communities and nonprofits in a variety of projects to improve health in local communities.

District Cumulative: **\$986,195**

TSET Discovery Grants and TSET Built Environment Grants

Grantees

Cushing Public Schools **\$736,195**
Oklahoma State University (OSU) Student Farm **\$250,000**
Serving Payne County



A Program of TSET

TOTAL REGISTRATIONS:

District FY24:

245

District Cumulative:

4,373

The Oklahoma Tobacco Helpline provides free telephone and web-based coaching sessions and free nicotine patches, gum and lozenges to all Oklahomans each year, 24/7.

State Cumulative:

OVER 600,000

STEPHENSON CANCER CENTER

District Participation 2012-2024:

141*

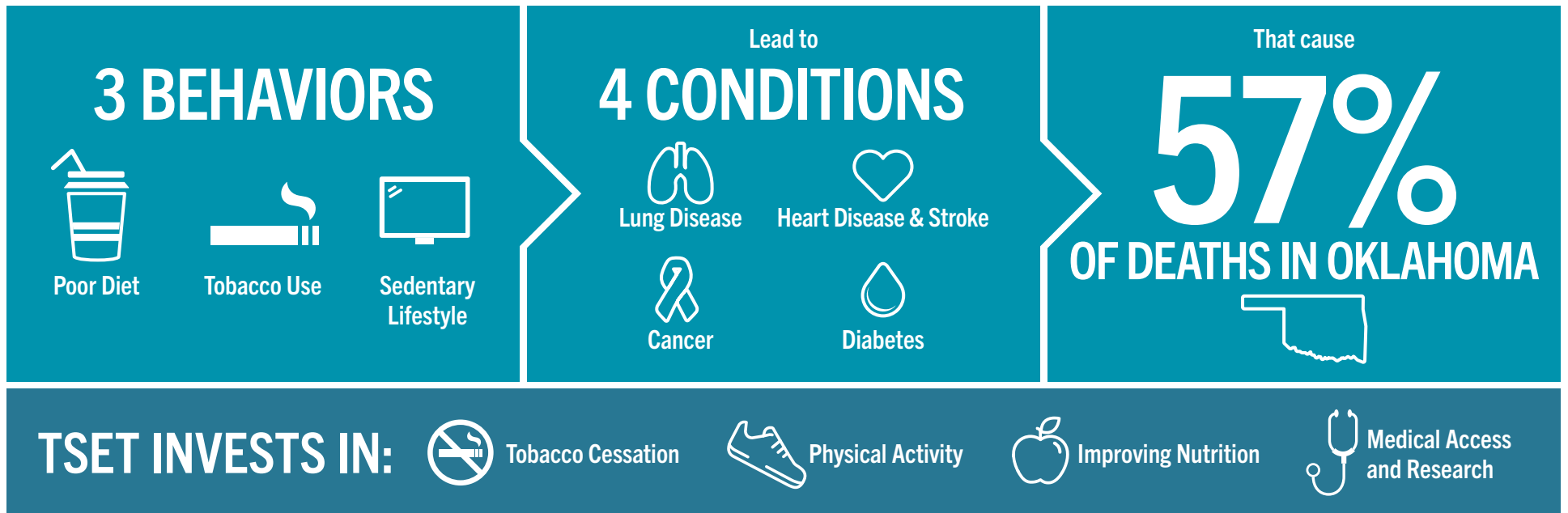
TSET funds cancer treatment and research at the Stephenson Cancer Center in support of TSET's mission to decrease the burden of cancer by promoting, coordinating and supporting innovative cancer research that allows Oklahomans of all ages to receive cutting-edge care without leaving the state.

*Patients that have participated in interventional clinical trials at the Stephenson Cancer Center



405.521.3888 | Oklahoma.gov/TSET
Board of Directors Chair Kenneth Rowe
Executive Director Julie Bisbee

TSET'S MISSION: TO REDUCE PREVENTABLE DEATH IN OKLAHOMA.



IN OKLAHOMA:

OBESITY:
\$1.72 BILLION
IN MEDICAL EXPENDITURES EACH YEAR

- 1 IN 6 HIGH SCHOOL STUDENTS IS OBESE
- 1 IN 6 HIGH SCHOOL STUDENTS IS OVERWEIGHT
- 1 IN 3 ADULTS IS OBESE

SMOKING:
\$1.88 BILLION
IN DIRECT HEALTHCARE COSTS EACH YEAR

- 7,500 ADULT DEATHS EACH YEAR
- 8,400 KIDS (UNDER 18) TRY CIGARETTES FOR THE FIRST TIME EACH YEAR
- \$149 MILLION IS SPENT BY THE TOBACCO INDUSTRY ANNUALLY TO MARKET TOBACCO IN OKLAHOMA

MOVING THE NEEDLE:

ADULT SMOKING PREVALENCE

2001: 28.6%

2023: 15.8%

SMOKING AMONG KIDS CUT IN HALF

NEARLY **\$757 MILLION** ADDITIONAL RESEARCH DOLLARS LEVERAGED AFTER TSET'S INVESTMENT

MORE THAN **620,000** PEOPLE SERVED BY THE OKLAHOMA TOBACCO HELPLINE

THROUGH THE HEALTH CARE WORKFORCE TRAINING COMMISSION, **120 PHYSICIANS** HAVE OR ARE CURRENTLY PRACTICING IN RURAL AND UNDERSERVED AREAS OF OKLAHOMA