

SENATE DISTRICT 40

SENATOR Carri Hicks

COUNTIES Oklahoma



These TSET grants work with local community partners to help prevent cancer and cardiovascular disease by reducing tobacco use and obesity.

\$1,560,000 invested in your district FY21-FY24

\$3,224,200 invested in your district FY16-FY20

Grantees FY21-FY24

Oklahoma City-County Health Department **\$1,560,000**



These TSET grants are for schools, school districts and local communities to promote wellness through policies and strategies that encourage healthy eating, physical activity and tobacco-free lifestyles.

\$80,000 total invested in your district

Healthy Schools Incentive Grants

Monroe Elementary School **\$20,000** Oklahoma City Public Schools **\$60,000**



These TSET grants provided food during the pandemic and supported partnerships that seek to increase the availability of healthy foods.

District Cumulative: **\$96,544**

Grantees

Regional Food Bank of Oklahoma **\$96,544**
Serving Canadian, Cleveland, Oklahoma and Tillman counties

TSET Grants for Built Environment and Active Living

These TSET grants support communities and nonprofits in a variety of projects to improve health in local communities.

District Cumulative: **\$399,137**

Grantees

NewView Oklahoma **\$399,137**

Oklahoma Tobacco Helpline

1 800 QUIT NOW

1-800-784-8669 **OKhelpline.com**

A Program of TSET

TOTAL REGISTRATIONS:

District FY23:

452

District Cumulative:

9,125

The Oklahoma Tobacco Helpline provides free telephone and web-based coaching sessions, free nicotine patches, gum and lozenges to all Oklahomans each year, 24/7.

State Cumulative:

590,541

STEPHENSON CANCER CENTER

District Participation 2012-2022:

496*

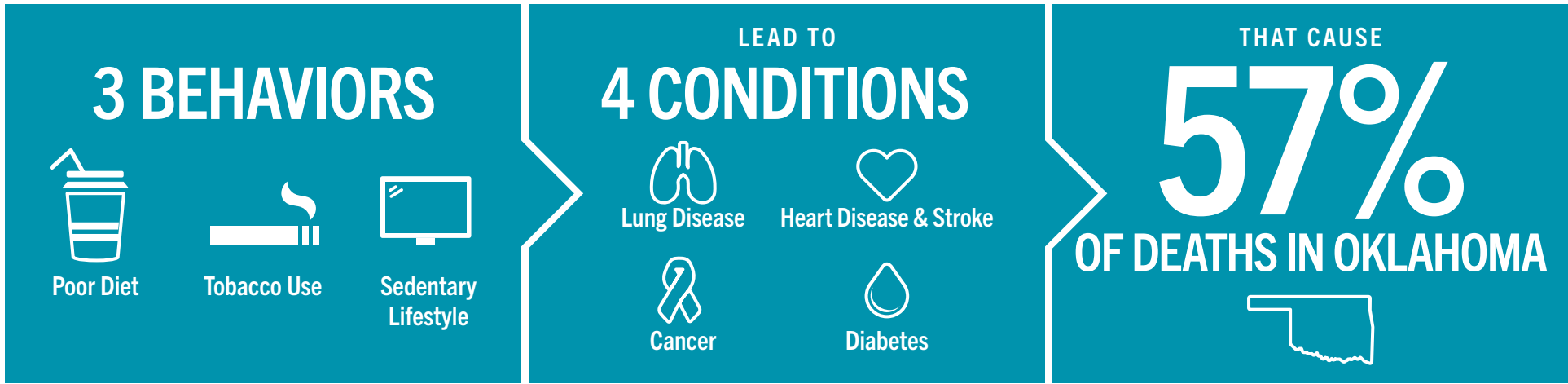
TSET funds cancer treatment and research at the Stephenson Cancer Center in support of TSET's mission to decrease the burden of cancer by promoting, coordinating and supporting innovative cancer research that allows Oklahomans of all ages to receive cutting-edge care without leaving the state.

*Patients that have participated in interventional clinical trials at the Stephenson Cancer Center



405.521.3888 | Oklahoma.gov/TSET
Board of Directors Chair Marshall Snipes
Executive Director Julie Bisbee

TSET'S MISSION: TO REDUCE PREVENTABLE DEATH IN OKLAHOMA



TSET INVESTS IN:

- Tobacco Cessation
- Physical Activity
- Improving Nutrition
- Medical Access and Research

IN OKLAHOMA:

OBESITY COSTS
\$1.72 BILLION
IN MEDICAL EXPENDITURES EACH YEAR

- 1 IN 6 HIGH SCHOOL STUDENTS IS OBESE
- 1 IN 6 HIGH SCHOOL STUDENTS IS OVERWEIGHT
- 1 IN 3 ADULTS IS OBESE

SMOKING COSTS
\$1.88 BILLION
IN DIRECT HEALTH CARE COSTS EACH YEAR

- 7,500 ADULT DEATHS EACH YEAR
- 8,400 KIDS (UNDER 18) TRY CIGARETTES FOR THE FIRST TIME EACH YEAR
- \$149 MILLION IS SPENT BY THE TOBACCO INDUSTRY ANNUALLY TO MARKET TOBACCO IN OKLAHOMA

MOVING THE NEEDLE:

ADULT SMOKING PREVALENCE

- 2001: 28.6%
- 2022: 15.6%

SMOKING AMONG KIDS CUT IN HALF

NEARLY \$723 MILLION ADDITIONAL RESEARCH DOLLARS LEVERAGED AFTER TSET'S INVESTMENT

MORE THAN 590,000 REGISTRATIONS TO THE OKLAHOMA TOBACCO HELPLINE

THROUGH THE HEALTH CARE WORKFORCE TRAINING COMMISSION, **117 PHYSICIANS** HAVE PRACTICED OR ARE PRACTICING IN RURAL AND **UNDERSERVED AREAS** OF OKLAHOMA