

SENATE DISTRICT 38

SENATOR Brent Howard

COUNTIES Beckham Greer Harmon Jackson Kiowa Tillman Washita



These TSET grants work with local community partners to help prevent cancer and cardiovascular disease by reducing tobacco use and obesity.

\$612,949 invested in your district FY21-FY24

\$5,230,856 invested in your district FY16-FY20

Grantees FY21-FY24

Great Plains Youth and Family Services *Serving Caddo and Kiowa counties* **\$612,949**



These TSET grants are for schools, school districts and local communities to promote wellness through policies and strategies that encourage healthy eating, physical activity and tobacco-free lifestyles.

\$400,000 total invested in your district

Healthy Communities Incentive Grants

City of Blair	\$20,000	City of Hobart	\$2,000
City of Elk City	\$50,000	Town of Olustee	\$36,000
City of Frederick	\$20,000	Town of Tipton	\$36,000

Healthy Schools Incentive Grants

Altus Early Childhood Center	\$10,000	Altus Public Schools	\$60,000	Navajo Public Schools	\$20,000
Altus Elementary School	\$4,000	Blair Public Schools	\$15,000	Olustee-Eldorado Public School	\$8,000
Altus High School	\$12,500	Granite School District	\$15,000	Snyder Public Schools	\$3,000
Altus Intermediate School	\$10,000	Hollis School District	\$20,000	Weatherford Public Schools	\$30,000
Altus Junior High School	\$10,000	Indiahoma Public Schools	\$1,000		
Altus Primary School	\$7,500	L. Mendel Rivers Elementary School	\$10,000		



These TSET grants provided food during the pandemic and supported partnerships that seek to increase the availability of healthy foods.

District Cumulative: **\$408,505**

Grantees

Hunger Free Oklahoma **\$408,505**
Serving Delaware, Garfield, Jackson, Kay, Kiowa, Marshall, Okfuskee, Seminole and Washington counties

TSET Grants for Built Environment and Active Living

These TSET grants support communities and nonprofits in a variety of projects to improve health in local communities.

District Cumulative: **\$500,000**

Grantees

Healthy Schools Oklahoma (Statewide) –
 Bethany Children’s Health Center **\$500,000**
Will Rogers Elementary School is a participating school site.

Oklahoma Tobacco Helpline

1 800

QUIT NOW

1-800-784-8669 OKhelpline.com

A Program of TSET

TOTAL REGISTRATIONS:

District FY23:

535

District Cumulative:

12,058

The Oklahoma Tobacco Helpline provides free telephone and web-based coaching sessions, free nicotine patches, gum and lozenges to all Oklahomans each year, 24/7.

State Cumulative:

590,541

STEPHENSON CANCER CENTER

District Participation
 2012-2022:

205*

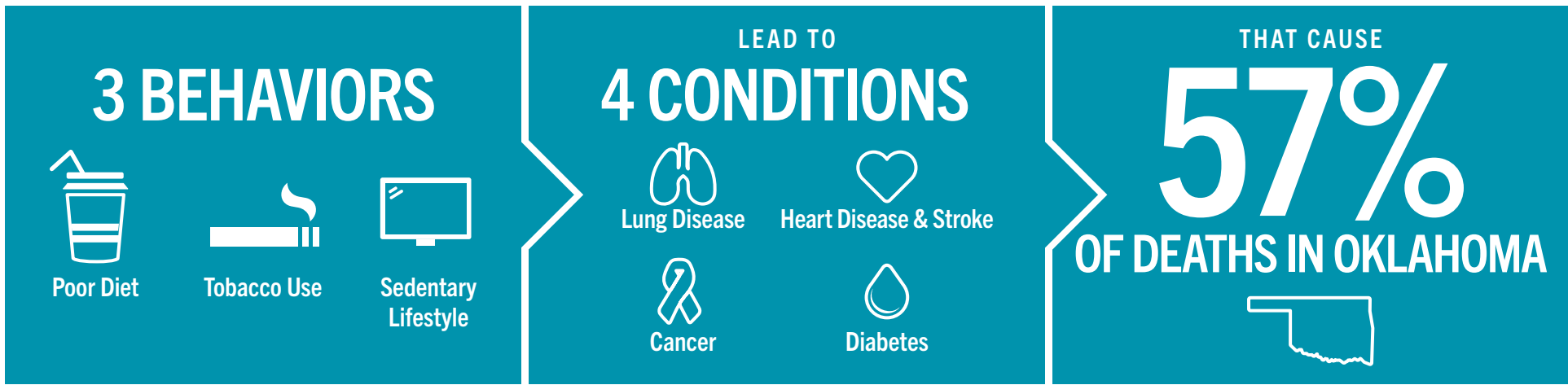
TSET funds cancer treatment and research at the Stephenson Cancer Center in support of TSET’s mission to decrease the burden of cancer by promoting, coordinating and supporting innovative cancer research that allows Oklahomans of all ages to receive cutting-edge care without leaving the state.

*Patients that have participated in interventional clinical trials at the Stephenson Cancer Center



405.521.3888 | Oklahoma.gov/TSET
 Board of Directors Chair Marshall Snipes
 Executive Director Julie Bisbee

TSET'S MISSION: TO REDUCE PREVENTABLE DEATH IN OKLAHOMA



TSET INVESTS IN:

- Tobacco Cessation
- Physical Activity
- Improving Nutrition
- Medical Access and Research

IN OKLAHOMA:

OBESITY COSTS \$1.72 BILLION IN MEDICAL EXPENDITURES EACH YEAR

- 1 IN 6 HIGH SCHOOL STUDENTS IS OBESE
- 1 IN 6 HIGH SCHOOL STUDENTS IS OVERWEIGHT
- 1 IN 3 ADULTS IS OBESE

SMOKING COSTS \$1.88 BILLION IN DIRECT HEALTH CARE COSTS EACH YEAR

- 7,500 ADULT DEATHS EACH YEAR
- 8,400 KIDS (UNDER 18) TRY CIGARETTES FOR THE FIRST TIME EACH YEAR
- \$149 MILLION IS SPENT BY THE TOBACCO INDUSTRY ANNUALLY TO MARKET TOBACCO IN OKLAHOMA

MOVING THE NEEDLE:

ADULT SMOKING PREVALENCE

- 2001: 28.6%
- 2022: 15.6%

SMOKING AMONG KIDS CUT IN HALF

NEARLY \$723 MILLION ADDITIONAL RESEARCH DOLLARS LEVERAGED AFTER TSET'S INVESTMENT

MORE THAN 590,000 REGISTRATIONS TO THE OKLAHOMA TOBACCO HELPLINE

THROUGH THE HEALTH CARE WORKFORCE TRAINING COMMISSION, **117 PHYSICIANS** HAVE PRACTICED OR ARE PRACTICING IN RURAL AND **UNDERSERVED AREAS** OF OKLAHOMA