

SENATE DISTRICT 1

SENATOR Micheal Bergstrom

COUNTIES Craig Delaware Mayes Ottawa Rogers



These TSET grants work with local community partners to help prevent cancer and cardiovascular disease by reducing tobacco use and obesity.

\$3,495,733 invested in your district FY21-FY24

\$6,333,437 invested in your district FY16-FY20

Grantees FY21-FY24

Grand Nation, Inc.	\$806,305	ROCMND Area Youth Services	\$798,803
Serving Craig County		Serving Delaware County	
Mayes County HOPE Coalition	\$895,348	Rogers County Volunteers for Youth	\$995,277



These TSET grants are for schools, school districts and local communities to promote wellness through policies and strategies that encourage healthy eating, physical activity and tobacco-free lifestyles.

\$356,125 total invested in your district

Healthy Communities Incentive Grants

City of Miami	\$24,000	Town of Adair	\$36,000
City of Pryor Creek	\$50,000	Town of Ketchum	\$36,000
City of Vinita	\$50,000		

Healthy Schools Incentive Grants

Afton Public Schools	\$22,000	Miami Public Schools	\$15,500
Bluejacket Public Schools	\$15,000	Pryor Public Schools	\$15,000
Cleora Public Schools	\$2,625	Turkey Ford School District	\$15,000
Grove Public Schools	\$30,000	Wyandotte School District	\$20,000
Jay Public Schools	\$25,000		



These TSET grants provided food during the pandemic and supported partnerships that seek to increase the availability of healthy foods.

District Cumulative: **\$444,577**

Grantees

Boys and Girls Club	\$36,072
Serving Ottawa County	
Hunger Free Oklahoma	\$408,505
Serving Delaware, Garfield, Jackson, Kay, Kiowa, Marshall, Okfuskee, Seminole and Washington counties	

TSET Grants for Built Environment and Active Living

These TSET grants support communities and nonprofits in a variety of projects to improve health in local communities.

District Cumulative: **\$102,749**

Grantees

City of Pryor Creek	\$102,749
---------------------------	-----------

Oklahoma Tobacco Helpline

1 800 QUIT NOW

1-800-784-8669 **OKhelpline.com**

A Program of TSET

TOTAL REGISTRATIONS:

District FY23:

708

District Cumulative:

14,373

The Oklahoma Tobacco Helpline provides free telephone and web-based coaching sessions, free nicotine patches, gum and lozenges to all Oklahomans each year, 24/7.

State Cumulative:

590,541

STEPHENSON CANCER CENTER

District Participation 2012-2022:

62*

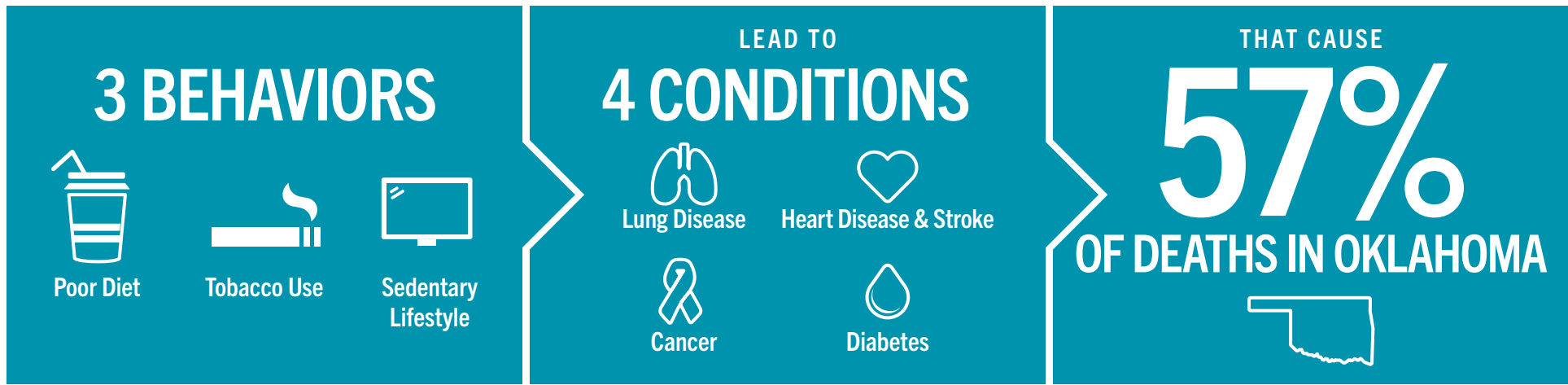
TSET funds cancer treatment and research at the Stephenson Cancer Center in support of TSET's mission to decrease the burden of cancer by promoting, coordinating and supporting innovative cancer research that allows Oklahomans of all ages to receive cutting-edge care without leaving the state.

*Patients that have participated in interventional clinical trials at the Stephenson Cancer Center



405.521.3888 | Oklahoma.gov/TSET
Board of Directors Chair Marshall Snipes
Executive Director Julie Bisbee

TSET'S MISSION: TO REDUCE PREVENTABLE DEATH IN OKLAHOMA



TSET INVESTS IN:

- Tobacco Cessation
- Physical Activity
- Improving Nutrition
- Medical Access and Research

IN OKLAHOMA:

OBESITY COSTS \$1.72 BILLION IN MEDICAL EXPENDITURES EACH YEAR

- 1 IN 6 HIGH SCHOOL STUDENTS IS OBESE
- 1 IN 6 HIGH SCHOOL STUDENTS IS OVERWEIGHT
- 1 IN 3 ADULTS IS OBESE

SMOKING COSTS \$1.88 BILLION IN DIRECT HEALTH CARE COSTS EACH YEAR

- 7,500 ADULT DEATHS EACH YEAR
- 8,400 KIDS (UNDER 18) TRY CIGARETTES FOR THE FIRST TIME EACH YEAR
- \$149 MILLION IS SPENT BY THE TOBACCO INDUSTRY ANNUALLY TO MARKET TOBACCO IN OKLAHOMA

MOVING THE NEEDLE:

ADULT SMOKING PREVALENCE

- 2001: 28.6%
- 2022: 15.6%

SMOKING AMONG KIDS CUT IN HALF

NEARLY \$723 MILLION ADDITIONAL RESEARCH DOLLARS LEVERAGED AFTER TSET'S INVESTMENT

MORE THAN 590,000 REGISTRATIONS TO THE OKLAHOMA TOBACCO HELPLINE

THROUGH THE HEALTH CARE WORKFORCE TRAINING COMMISSION, **117 PHYSICIANS** HAVE PRACTICED OR ARE PRACTICING IN RURAL AND **UNDERSERVED AREAS** OF OKLAHOMA