

# SENATE DISTRICT 17

**SENATOR** Shane Jett

**COUNTIES** Cleveland Oklahoma Pottawatomie



These TSET grants work with local community partners to help prevent cancer and cardiovascular disease by reducing tobacco use and obesity.

**\$3,347,492** invested in your district FY21-FY24 **\$6,843,960** invested in your district FY16-FY20

**Grantees FY21-FY24**

Gateway to Prevention and Recovery Serving Pottawatomie County	\$880,000	Norman Regional Health System Serving Cleveland County	\$907,492
		Oklahoma City-County Health Department	\$1,560,000



These TSET grants are for schools, school districts and local communities to promote wellness through policies and strategies that encourage healthy eating, physical activity and tobacco-free lifestyles.

**\$258,500** total invested in your district

**Healthy Communities Incentive Grants**

City of McLoud	\$10,000	City of Shawnee	\$120,000
----------------	----------	-----------------	-----------

**Healthy Schools Incentive Grants**

Asher Public Schools	\$15,000	McLoud Public Schools	\$5,000
Konawa Public Schools	\$20,000	North Rock Creek Public Schools	\$6,000
Maud Public Schools	\$15,000	Pleasant Grove Public School District	\$15,000
McLoud Elementary School	\$4,000	Shawnee Public Schools	\$30,000
McLoud High School	\$2,000	South Rock Creek Public Schools	\$15,000
McLoud Jr. High School	\$1,500		



These TSET grants provided food during the pandemic and supported partnerships that seek to increase the availability of healthy foods.

District Cumulative: **\$346,544**

**Grantees**

Gateway to Prevention and Recovery Serving Hughes, Pottawatomie and Seminole counties	\$250,000
Regional Food Bank of Oklahoma Serving Canadian, Cleveland, Oklahoma and Tillman counties	\$96,544

**TSET Grants for Built Environment and Active Living**

These TSET grants support communities and nonprofits in a variety of projects to improve health in local communities.

District Cumulative: **\$500,000**

**Grantees**

Healthy Schools Oklahoma (Statewide) – Bethany Children's Health Center Horace Mann Elementary School is a participating school site.	\$500,000
---	-----------

Oklahoma Tobacco Helpline

**1 800 QUIT NOW**

1-800-784-8669 **OKhelpline.com**

A Program of TSET

**TOTAL REGISTRATIONS:**

District FY23:

**669**

District Cumulative:

**13,894**

The Oklahoma Tobacco Helpline provides free telephone and web-based coaching sessions, free nicotine patches, gum and lozenges to all Oklahomans each year, 24/7.

State Cumulative:

**590,541**

**STEPHENSON CANCER CENTER**

District Participation  
2012-2022:

**493\***

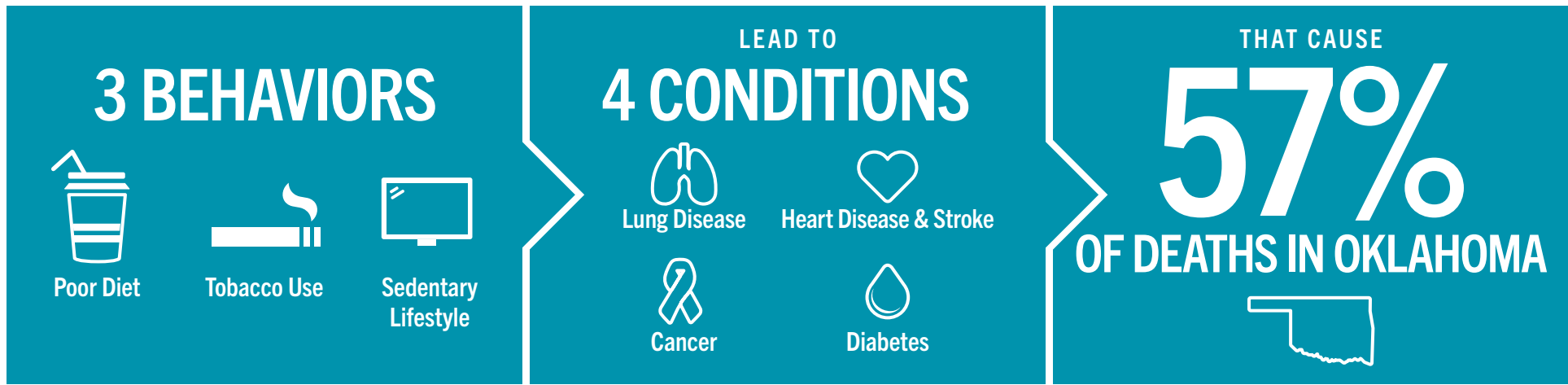
TSET funds cancer treatment and research at the Stephenson Cancer Center in support of TSET's mission to decrease the burden of cancer by promoting, coordinating and supporting innovative cancer research that allows Oklahomans of all ages to receive cutting-edge care without leaving the state.

\*Patients that have participated in interventional clinical trials at the Stephenson Cancer Center



405.521.3888 | Oklahoma.gov/TSET  
Board of Directors Chair Marshall Snipes  
Executive Director Julie Bisbee

# TSET'S MISSION: TO REDUCE PREVENTABLE DEATH IN OKLAHOMA



**TSET INVESTS IN:**

- Tobacco Cessation
- Physical Activity
- Improving Nutrition
- Medical Access and Research

## IN OKLAHOMA:

**OBESITY COSTS \$1.72 BILLION** IN MEDICAL EXPENDITURES EACH YEAR

- 1 IN 6 HIGH SCHOOL STUDENTS IS OBESE
- 1 IN 6 HIGH SCHOOL STUDENTS IS OVERWEIGHT
- 1 IN 3 ADULTS IS OBESE

**SMOKING COSTS \$1.88 BILLION** IN DIRECT HEALTH CARE COSTS EACH YEAR

- 7,500 ADULT DEATHS EACH YEAR
- 8,400 KIDS (UNDER 18) TRY CIGARETTES FOR THE FIRST TIME EACH YEAR
- \$149 MILLION IS SPENT BY THE TOBACCO INDUSTRY ANNUALLY TO MARKET TOBACCO IN OKLAHOMA

## MOVING THE NEEDLE:

**ADULT SMOKING PREVALENCE**

- 2001: 28.6%
- 2022: 15.6%

**SMOKING AMONG KIDS CUT IN HALF**

**NEARLY \$723 MILLION** ADDITIONAL RESEARCH DOLLARS LEVERAGED AFTER TSET'S INVESTMENT

**MORE THAN 590,000** REGISTRATIONS TO THE OKLAHOMA TOBACCO HELPLINE

THROUGH THE HEALTH CARE WORKFORCE TRAINING COMMISSION, **117 PHYSICIANS** HAVE PRACTICED OR ARE PRACTICING IN RURAL AND **UNDERSERVED AREAS** OF OKLAHOMA