

# HOUSE DISTRICT 85

REPRESENTATIVE Cyndi Munson

COUNTIES Oklahoma



These TSET grants work with local community partners to help prevent cancer and cardiovascular disease by reducing tobacco use and obesity.

**\$1,560,000** invested in your district FY21-FY24

**\$3,224,200** invested in your district FY16-FY20

**Grantees FY21-FY24**

Oklahoma City-County Health Department ..... **\$1,560,000**



These TSET grants are for schools, school districts and local communities to promote wellness through policies and strategies that encourage healthy eating, physical activity and tobacco-free lifestyles.

**\$60,000** total invested in your district

**Healthy Schools Incentive Grants**

Oklahoma City Public Schools ..... **\$60,000**



These TSET grants provided food during the pandemic and supported partnerships that seek to increase the availability of healthy foods.

District Cumulative: **\$96,544**

**Grantees**

Regional Food Bank of Oklahoma ..... **\$96,544**  
 Serving Canadian, Cleveland, Oklahoma and Tillman counties

**TSET Grants for Built Environment and Active Living**

These TSET grants support communities and nonprofits in a variety of projects to improve health in local communities.

District Cumulative: **\$399,137**

**Grantees**

NewView Oklahoma ..... **\$399,137**

Oklahoma Tobacco Helpline  
**1 800 QUIT NOW**  
 1-800-784-8669 **OKhelpline.com**

A Program of TSET

**TOTAL REGISTRATIONS:**

District FY23:

**178**

District Cumulative:

**4,070**

The Oklahoma Tobacco Helpline provides free telephone and web-based coaching sessions, free nicotine patches, gum and lozenges to all Oklahomans each year, 24/7.

State Cumulative:

**590,541**

**STEPHENSON CANCER CENTER**

District Participation 2012-2022:

**420\***

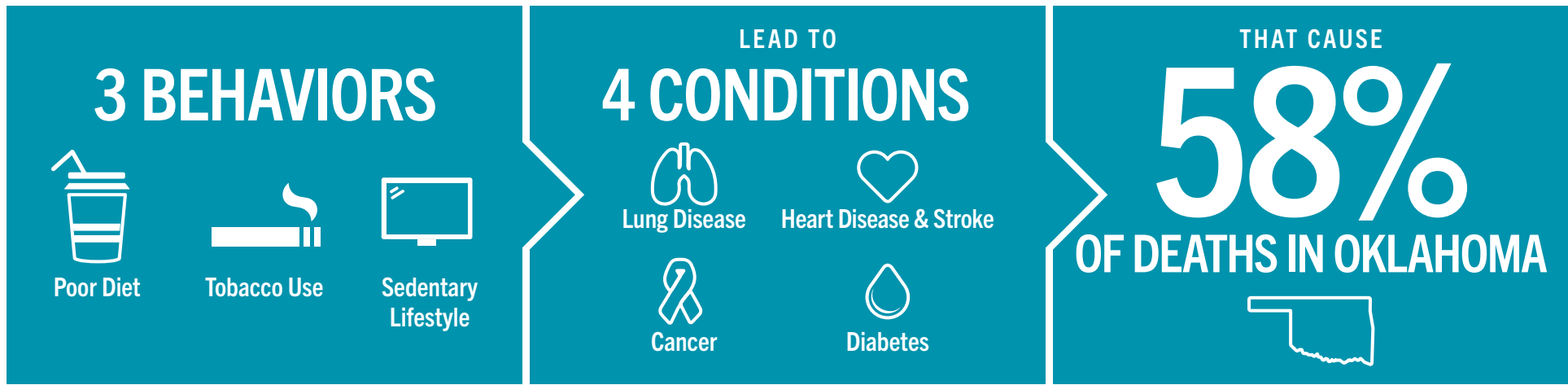
TSET funds cancer treatment and research at the Stephenson Cancer Center in support of TSET's mission to decrease the burden of cancer by promoting, coordinating and supporting innovative cancer research that allows Oklahomans of all ages to receive cutting-edge care without leaving the state.

\*Patients that have participated in interventional clinical trials at the Stephenson Cancer Center



405.521.3888 | Oklahoma.gov/TSET  
 Board of Directors Chair Marshall Snipes  
 Executive Director Julie Bisbee

# TSET'S MISSION: TO REDUCE PREVENTABLE DEATH IN OKLAHOMA



**TSET INVESTS IN:**

- Tobacco Cessation
- Physical Activity
- Improving Nutrition
- Medical Access and Research

## IN OKLAHOMA:

**OBESITY COSTS \$1.72 BILLION** IN MEDICAL EXPENDITURES EACH YEAR

- 1 IN 6 HIGH SCHOOL STUDENTS IS OBESE
- 1 IN 6 HIGH SCHOOL STUDENTS IS OVERWEIGHT
- 1 IN 3 ADULTS IS OBESE

**SMOKING COSTS \$1.88 BILLION** IN DIRECT HEALTH CARE COSTS EACH YEAR

- 7,500 ADULT DEATHS EACH YEAR
- 8,400 KIDS (UNDER 18) TRY CIGARETTES FOR THE FIRST TIME EACH YEAR
- \$149 MILLION IS SPENT BY THE TOBACCO INDUSTRY ANNUALLY TO MARKET TOBACCO IN OKLAHOMA

## MOVING THE NEEDLE:

**ADULT SMOKING PREVALENCE**

- 2001: 28.6%
- 2022: 15.6%

**SMOKING AMONG KIDS CUT IN HALF**

**NEARLY \$723 MILLION** ADDITIONAL RESEARCH DOLLARS LEVERAGED AFTER TSET'S INVESTMENT

**MORE THAN 590,000** REGISTRATIONS TO THE OKLAHOMA TOBACCO HELPLINE

THROUGH THE HEALTH CARE WORKFORCE TRAINING COMMISSION, **117 PHYSICIANS** HAVE PRACTICED OR ARE PRACTICING IN RURAL AND **UNDERSERVED AREAS** OF OKLAHOMA