

HOUSE DISTRICT 61

REPRESENTATIVE Kenton Patzkowsky

COUNTIES Beaver Cimarron Ellis Harper Texas Woodward



These TSET grants work with local community partners to help prevent cancer and cardiovascular disease by reducing tobacco use and obesity.

\$1,521,840 invested in your district FY16-FY20

There are no Healthy Living Program Grants at this time. Visit Oklahoma.gov/TSET to learn more.



These TSET grants are for schools, school districts and local communities to promote wellness through policies and strategies that encourage healthy eating, physical activity and tobacco-free lifestyles.

\$97,000 total invested in your district

Healthy Communities Incentive Grants

City of Guymon	\$26,000	City of Woodward	\$26,000
City of Hooker	\$4,000	Town of Laverne	\$20,000

Healthy Schools Incentive Grants

Arnett Public Schools	\$3,000	Shattuck Public Schools	\$3,000
Guymon Public Schools	\$15,000		

These TSET grants provided food during the pandemic and supported partnerships that seek to increase the availability of healthy foods.

District Cumulative: \$158,029

Grantees

Harper County Development Authority	\$40,395
<i>Serving Harper County</i>	
RSVP Enid	\$117,634
<i>Serving Alfalfa, Garfield, Grant, Kay, Kingfisher, Major, Noble and Woodward counties</i>	



Oklahoma Tobacco Helpline

1 800

QUIT NOW

1-800-784-8669 OKhelpline.com

A Program of TSET

TOTAL REGISTRATIONS:

District FY23:

95

District Cumulative:

2,181

The Oklahoma Tobacco Helpline provides free telephone and web-based coaching sessions, free nicotine patches, gum and lozenges to all Oklahomans each year, 24/7.

State Cumulative:

590,541

STEPHENSON CANCER CENTER

District Participation
2012-2022:

36*

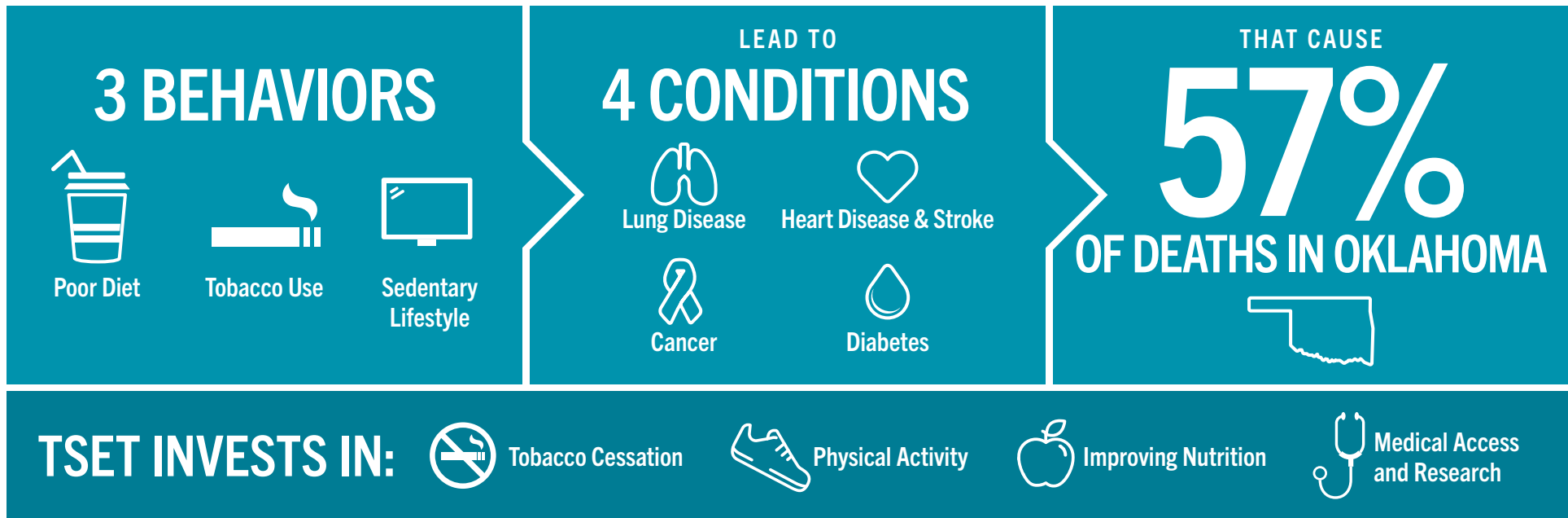
TSET funds cancer treatment and research at the Stephenson Cancer Center in support of TSET's mission to decrease the burden of cancer by promoting, coordinating and supporting innovative cancer research that allows Oklahomans of all ages to receive cutting-edge care without leaving the state.

*Patients that have participated in interventional clinical trials at the Stephenson Cancer Center



405.521.3888 | Oklahoma.gov/TSET
Board of Directors Chair Marshall Snipes
Executive Director Julie Bisbee

TSET'S MISSION: TO REDUCE PREVENTABLE DEATH IN OKLAHOMA



IN OKLAHOMA:

OBESITY COSTS
\$1.72 BILLION
 IN MEDICAL EXPENDITURES EACH YEAR

1 IN 6 HIGH SCHOOL STUDENTS IS OBESE 1 IN 6 HIGH SCHOOL STUDENTS IS OVERWEIGHT

1 IN 3 ADULTS IS OBESE

SMOKING COSTS
\$1.88 BILLION
 IN DIRECT HEALTH CARE COSTS EACH YEAR

7,500 ADULT DEATHS EACH YEAR \$149 MILLION IS SPENT BY THE TOBACCO INDUSTRY ANNUALLY TO MARKET TOBACCO IN OKLAHOMA

8,400 KIDS (UNDER 18) TRY CIGARETTES FOR THE FIRST TIME EACH YEAR

MOVING THE NEEDLE:

ADULT SMOKING PREVALENCE

2001: 28.6%

2022: 15.6%

SMOKING AMONG KIDS CUT IN HALF

NEARLY **\$723 MILLION** ADDITIONAL RESEARCH DOLLARS LEVERAGED AFTER TSET'S INVESTMENT

MORE THAN **590,000** REGISTRATIONS TO THE OKLAHOMA TOBACCO HELPLINE

THROUGH THE HEALTH CARE WORKFORCE TRAINING COMMISSION, **117 PHYSICIANS** HAVE PRACTICED OR ARE PRACTICING IN RURAL AND **UNDERSERVED AREAS** OF OKLAHOMA