


# LEFLORE COUNTY

Oklahoma Tobacco Helpline

**1 800 QUIT NOW**

1-800-784-8669 **OKhelpline.com**

A Program of TSET

 The Oklahoma Tobacco Helpline provides free telephone and web-based coaching sessions, free nicotine patches, gum and lozenges to all Oklahomans each year, 24/7.

## TOTAL REGISTRATIONS:

County FY23:

**263**

County Cumulative:

**6,267**

State Cumulative:

**590,541**






\* 2021 DATA  
† 2022 DATA



405.521.3888 | Oklahoma.gov/TSET  
Board of Directors Chair Marshall Snipes  
Executive Director Julie Bisbee

## HEALTH INDICATORS

OKLAHOMA STATE DEPARTMENT OF HEALTH

	 HEART DISEASE DEATHS (Rate per 100,000)	 CANCER DEATHS (Rate per 100,000)	 ADULT SMOKING RATE (%)	 OBESITY RATE (%)	 PREVALENCE OF DIABETES (%)
<b>COUNTY*</b>	<b>349.7</b>	<b>212.2</b>	<b>24.3%</b>	<b>53.3%</b>	<b>19.0%</b>
<b>OKLAHOMA†</b>	264.2	175.1	15.6%	40.0%	13.3%
<b>U.S.†</b>	173.8	143.8	14.0%	33.6%	11.5%



These TSET grants work with local community partners to help prevent cancer and cardiovascular disease by reducing tobacco use and obesity.

**\$761,034** invested in your community FY21-FY24

**\$1,172,085** invested in your community FY16-FY20

### Grantees FY21-FY24

LeFlore County Youth Services, Inc. .... **\$761,034**



These TSET grants are for schools, school districts and local communities to promote wellness through policies and strategies that encourage healthy eating, physical activity and tobacco-free lifestyles.

**\$318,500** invested in your community

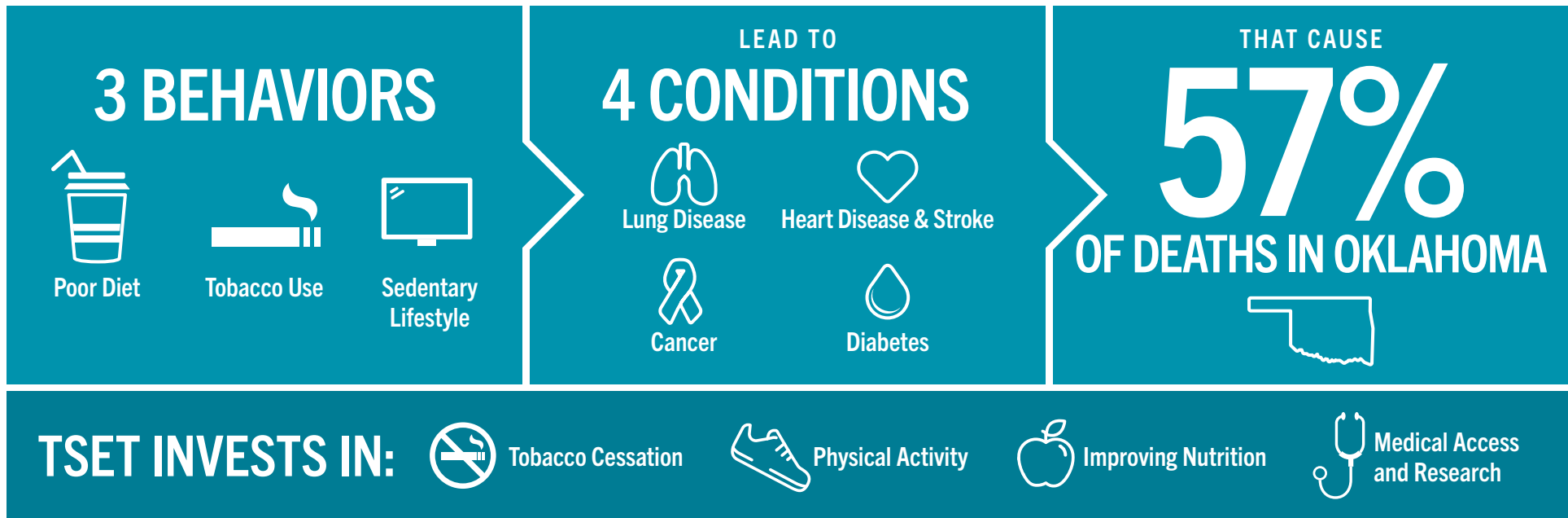
### Healthy Communities Incentive Grants

City of Heavener.....	<b>\$36,000</b>	City of Talihina .....	<b>\$36,000</b>
City of Pocola.....	<b>\$36,000</b>	Town of Arkoma .....	<b>\$36,000</b>
City of Poteau .....	<b>\$50,000</b>	Town of Panama.....	<b>\$36,000</b>
City of Spiro .....	<b>\$36,000</b>		

### Healthy Schools Incentive Grants

Heavener Public Schools .....	<b>\$20,000</b>	Poteau Public Schools .....	<b>\$10,000</b>
Howe Public Schools .....	<b>\$11,500</b>	Wister Public School .....	<b>\$3,000</b>
Poteau High School .....	<b>\$8,000</b>		

# TSET'S MISSION: TO REDUCE PREVENTABLE DEATH IN OKLAHOMA



## IN OKLAHOMA:

**OBESITY COSTS**  
**\$1.72 BILLION**  
 IN MEDICAL EXPENDITURES EACH YEAR

1 IN 6 HIGH SCHOOL STUDENTS IS OBESE

1 IN 6 HIGH SCHOOL STUDENTS IS OVERWEIGHT

1 IN 3 ADULTS IS OBESE

**SMOKING COSTS**  
**\$1.88 BILLION**  
 IN DIRECT HEALTH CARE COSTS EACH YEAR

7,500 ADULT DEATHS EACH YEAR

8,400 KIDS (UNDER 18) TRY CIGARETTES FOR THE FIRST TIME EACH YEAR

\$149 MILLION IS SPENT BY THE TOBACCO INDUSTRY ANNUALLY TO MARKET TOBACCO IN OKLAHOMA

## MOVING THE NEEDLE:

**ADULT SMOKING PREVALENCE**

2001: 28.6%

2022: 15.6%

**SMOKING AMONG KIDS CUT IN HALF**

NEARLY **\$723 MILLION** ADDITIONAL RESEARCH DOLLARS LEVERAGED AFTER TSET'S INVESTMENT

MORE THAN **590,000** REGISTRATIONS TO THE OKLAHOMA TOBACCO HELPLINE

THROUGH THE HEALTH CARE WORKFORCE TRAINING COMMISSION, **117 PHYSICIANS** HAVE PRACTICED OR ARE PRACTICING IN RURAL AND **UNDERSERVED AREAS** OF OKLAHOMA