

SENATE DISTRICT 6

SENATOR David Bullard

COUNTIES Atoka Bryan Choctaw Johnston Pushmataha



These TSET grants work with local community partners to help prevent cancer and cardiovascular disease by reducing tobacco use and obesity.

\$270,661 invested in your district FY21-FY23

\$4,583,063 invested in your district FY16-FY20

Grantees FY21

Atoka County Health Department.....	\$91,000	Pushmataha County Health Department.....	\$92,661
Bryan County Health Department.....	\$87,000		



These TSET grants are for schools, school districts and local communities to promote wellness through policies and strategies that encourage healthy eating, physical activity and tobacco-free lifestyles.

\$510,000 total invested in your district

Healthy Communities Incentive Grants

City of Antlers.....	\$36,000	City of Hugo.....	\$50,000
City of Achille.....	\$20,000	Town of Stringtown.....	\$36,000
City of Caney.....	\$36,000	Town of Tushka.....	\$36,000
City of Durant.....	\$100,000		

Healthy Schools Incentive Grants

Achille Public Schools.....	\$3,000	Hugo Public Schools.....	\$5,000
Antlers Elementary School.....	\$2,000	Lane Public School.....	\$15,000
Antlers High School.....	\$7,500	Milburn Public Schools.....	\$3,000
Antlers Public Schools.....	\$25,000	Moyers Public Schools.....	\$15,000
Bennington Elementary School.....	\$3,000	Rock Creek School District.....	\$20,000
Bennington High School.....	\$2,000	Silo Public Schools.....	\$20,000
Bennington Public Schools.....	\$15,000	Soper Public Schools.....	\$3,000
Calera Public Schools.....	\$3,000	Stringtown Public School.....	\$8,000
Caney Public Schools.....	\$15,000	Tushka Elementary School.....	\$1,500
Clayton Public Schools.....	\$3,000	Tushka High School.....	\$1,500
Colbert Public Schools.....	\$3,000	Tushka Public Schools.....	\$3,000
Colbert West Ward Elementary.....	\$1,500	Wapanucka Public Schools.....	\$3,000
Coleman Public School.....	\$15,000		

Oklahoma Tobacco Helpline

1 800

QUIT NOW

1-800-784-8669 **OKhelpline.com**

A Program of TSET

TOTAL REGISTRATIONS:

District FY22:

554

District Cumulative:

14,277

The Oklahoma Tobacco Helpline provides free telephone and web-based coaching sessions, free nicotine patches, gum and lozenges to all Oklahomans each year, 24/7.

State Cumulative:

549,000

STEPHENSON CANCER CENTER

District Participation
2012-2022:

116*

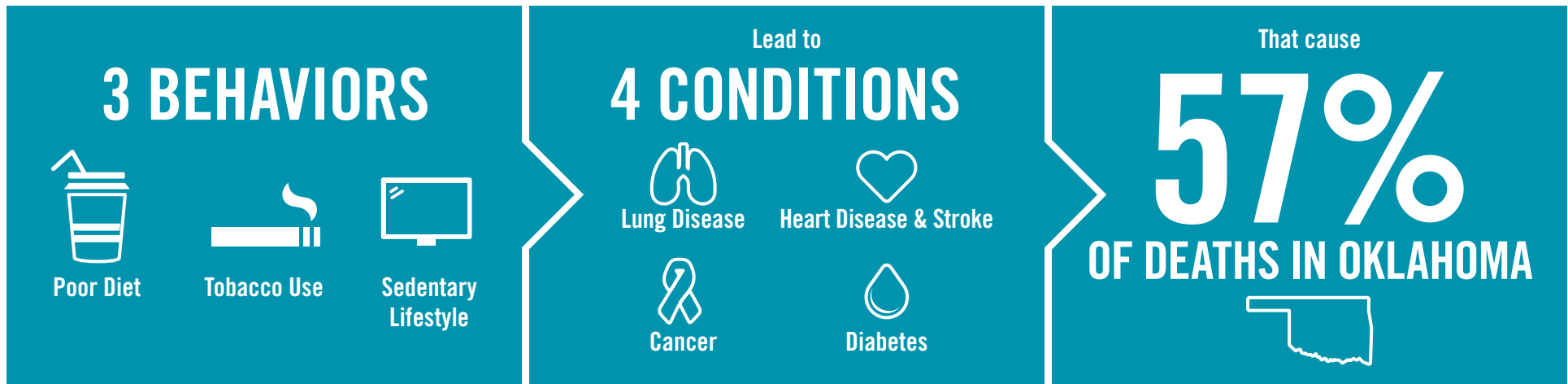
TSET funds cancer treatment and research at the Stephenson Cancer Center in support of TSET's mission to decrease the burden of cancer by promoting, coordinating and supporting innovative cancer research that allows Oklahomans of all ages to receive cutting-edge care without leaving the state.

*Patients that have participated in interventional clinical trials at the Stephenson Cancer Center



405.521.3888 | Oklahoma.gov/TSET
Board of Directors Chair Marshall Snipes
Executive Director Julie Bisbee

TSET'S MISSION: TO REDUCE PREVENTABLE DEATH IN OKLAHOMA.



TSET INVESTS IN:

- Tobacco Cessation
- Physical Activity
- Improving Nutrition
- Medical Access and Research

IN OKLAHOMA:

OBESITY:

\$1.72 BILLION

IN MEDICAL EXPENDITURES EACH YEAR

- 1 IN 6 HIGH SCHOOL STUDENTS IS OBESE
- 1 IN 6 HIGH SCHOOL STUDENTS IS OVERWEIGHT
- 1 IN 3 ADULTS IS OBESE

SMOKING:

\$1.88 BILLION

IN DIRECT HEALTHCARE COSTS EACH YEAR

- 7,500 ADULT DEATHS EACH YEAR
- 1,300 KIDS BECOME DAILY SMOKERS EACH YEAR
- \$150 MILLION IS SPENT BY THE TOBACCO INDUSTRY ANNUALLY ON MARKETING IN OKLAHOMA

MOVING THE NEEDLE:

ADULT SMOKING PREVALENCE

2001: 28.6%

2021: 16.9%

SMOKING AMONG KIDS CUT IN HALF

MORE THAN **\$580 MILLION** ADDITIONAL RESEARCH DOLLARS LEVERAGED AFTER TSET'S INVESTMENT

MORE THAN **490,000** PEOPLE SERVED BY THE OKLAHOMA TOBACCO HELPLINE

THROUGH THE HEALTH CARE WORKFORCE TRAINING COMMISSION, **99 PHYSICIANS** HAVE OR ARE CURRENTLY PRACTICING IN RURAL AND **UNDERSERVED** AREAS OF OKLAHOMA