

SENATE DISTRICT 5

SENATOR George Burns

COUNTIES LeFlore McCurtain Pushmataha



These TSET grants work with local community partners to help prevent cancer and cardiovascular disease by reducing tobacco use and obesity.

\$815,345 invested in your district FY21-FY23

\$3,288,098 invested in your district FY16-FY20

Grantees FY21-FY23

LeFlore County Youth Services, Inc. **\$569,697**

Grantees FY21

McCurtain County Health Department **\$152,987**
 Pushmataha County Health Department **\$92,661**



These TSET grants are for schools, school districts and local communities to promote wellness through policies and strategies that encourage healthy eating, physical activity and tobacco-free lifestyles.

\$793,500 total invested in your district

Healthy Communities Incentive Grants

Town of Arkoma **\$36,000**
 City of Broken Bow **\$36,000**
 Town of Clayton **\$36,000**
 City of Garvin **\$36,000**
 Town of Haworth **\$36,000**

City of Heavener **\$36,000**
 City of Idabel **\$50,000**
 Town of Panama **\$36,000**
 City of Pocola **\$36,000**
 City of Poteau **\$50,000**

City of Talihina **\$36,000**
 City of Spiro **\$36,000**
 Town of Valliant **\$36,000**
 Town of Wright City **\$36,000**

Healthy Schools Incentive Grants

Antlers Public Schools **\$25,000**
 Battiest Public Schools **\$3,000**
 Clayton Public Schools **\$3,000**
 Denison Public School **\$1,500**
 Fort Towson Public Schools **\$30,000**
 Glover Public School **\$15,000**
 Haworth Public Schools **\$2,000**

Heavener Public Schools **\$20,000**
 Howe Public Schools **\$11,500**
 Idabel Public Schools **\$45,000**
 Lufata Public Schools **\$15,000**
 Moyers Public Schools **\$15,000**
 Nashoba Public Schools **\$1,500**
 Poteau High School **\$8,000**

Poteau Public Schools **\$10,000**
 Rattan Public Schools **\$3,000**
 Smithville Public Schools **\$15,000**
 Valliant Public Schools **\$20,000**
 Wister Public School **\$3,000**
 Wright City Public Schools **\$15,000**



These TSET grants are focused investments made in a defined area of need or with a defined audience.

FY23 County Cumulative: \$120,000

Grantees

Oklahoma State University **\$120,000**
 Serving McCurtain County

Oklahoma Tobacco Helpline
1 800 QUIT NOW
 1-800-784-8669 **OKhelpline.com**

A Program of TSET

TOTAL REGISTRATIONS:

District FY22:

515

District Cumulative:

11,651

The Oklahoma Tobacco Helpline provides free telephone and web-based coaching sessions, free nicotine patches, gum and lozenges to all Oklahomans each year, 24/7.

State Cumulative:

549,000

STEPHENSON CANCER CENTER

District Participation
 2012-2022:

131*

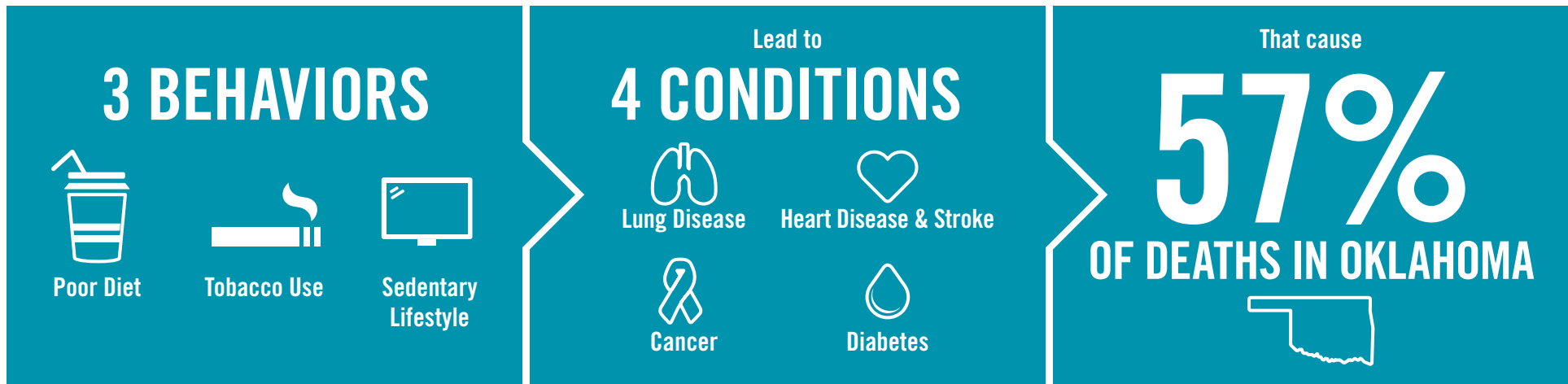
TSET funds cancer treatment and research at the Stephenson Cancer Center in support of TSET's mission to decrease the burden of cancer by promoting, coordinating and supporting innovative cancer research that allows Oklahomans of all ages to receive cutting-edge care without leaving the state.

*Patients that have participated in interventional clinical trials at the Stephenson Cancer Center



405.521.3888 | Oklahoma.gov/TSET
 Board of Directors Chair Marshall Snipes
 Executive Director Julie Bisbee

TSET'S MISSION: TO REDUCE PREVENTABLE DEATH IN OKLAHOMA.



TSET INVESTS IN:

- Tobacco Cessation
- Physical Activity
- Improving Nutrition
- Medical Access and Research

IN OKLAHOMA:

OBESITY:

\$1.72 BILLION

IN MEDICAL EXPENDITURES EACH YEAR

- 1 IN 6 HIGH SCHOOL STUDENTS IS OBESE
- 1 IN 6 HIGH SCHOOL STUDENTS IS OVERWEIGHT
- 1 IN 3 ADULTS IS OBESE

SMOKING:

\$1.88 BILLION

IN DIRECT HEALTHCARE COSTS EACH YEAR

- 7,500 ADULT DEATHS EACH YEAR
- 1,300 KIDS BECOME DAILY SMOKERS EACH YEAR
- \$150 MILLION IS SPENT BY THE TOBACCO INDUSTRY ANNUALLY ON MARKETING IN OKLAHOMA

MOVING THE NEEDLE:

ADULT SMOKING PREVALENCE

2001: 28.6%

2021: 16.9%

SMOKING AMONG KIDS CUT IN HALF

MORE THAN **\$580 MILLION** ADDITIONAL RESEARCH DOLLARS LEVERAGED AFTER TSET'S INVESTMENT

MORE THAN **490,000** PEOPLE SERVED BY THE OKLAHOMA TOBACCO HELPLINE

THROUGH THE HEALTH CARE WORKFORCE TRAINING COMMISSION, **99 PHYSICIANS** HAVE OR ARE CURRENTLY PRACTICING IN RURAL AND **UNDERSERVED** AREAS OF OKLAHOMA