

SENATE DISTRICT 3

SENATOR Blake Stephens

COUNTIES Cherokee Mayes Rogers Wagoner



These TSET grants work with local community partners to help prevent cancer and cardiovascular disease by reducing tobacco use and obesity.

\$1,985,025 invested in your district FY21-FY23

\$5,572,659 invested in your district FY16-FY20

Grantees FY21-FY23

Cherokee County Health Services Council	\$614,400	Rogers County Volunteers for Youth	\$735,277
Mayes County HOPE Coalition	\$635,348		



These TSET grants are for schools, school districts and local communities to promote wellness through policies and strategies that encourage healthy eating, physical activity and tobacco-free lifestyles.

\$220,500 total invested in your district

Healthy Communities Incentive Grants

Town of Chouteau	\$36,000	Town of Red Bird	\$20,000
Town of Inola	\$10,000	City of Wagoner	\$10,000
Town of Locust Grove	\$36,000		

Healthy Schools Incentive Grants

Fort Gibson Public Schools	\$3,000	Porter Elementary School	\$15,000
Grand View Public School	\$11,500	Porter JH/High School	\$15,000
Locust Grove Public Schools	\$14,000	Tahlequah Public Schools	\$30,000
Porter Consolidated Schools	\$20,000		

TSET Built Environment Transformation Grants and Healthy Living Innovation Grants

These TSET grants support communities and nonprofits in a variety of projects to improve health in local communities.

FY23 District Cumulative: \$27,418

Grantees

Town of Locust Grove	\$27,418
----------------------------	-----------------

Oklahoma Tobacco Helpline

1 800

QUIT NOW

1-800-784-8669 OKhelpline.com

A Program of TSET

TOTAL REGISTRATIONS:

District FY22:

489

District Cumulative:

9,926

The Oklahoma Tobacco Helpline provides free telephone and web-based coaching sessions, free nicotine patches, gum and lozenges to all Oklahomans each year, 24/7.

State Cumulative:

549,000

STEPHENSON CANCER CENTER

District Participation
2012-2022:

58*

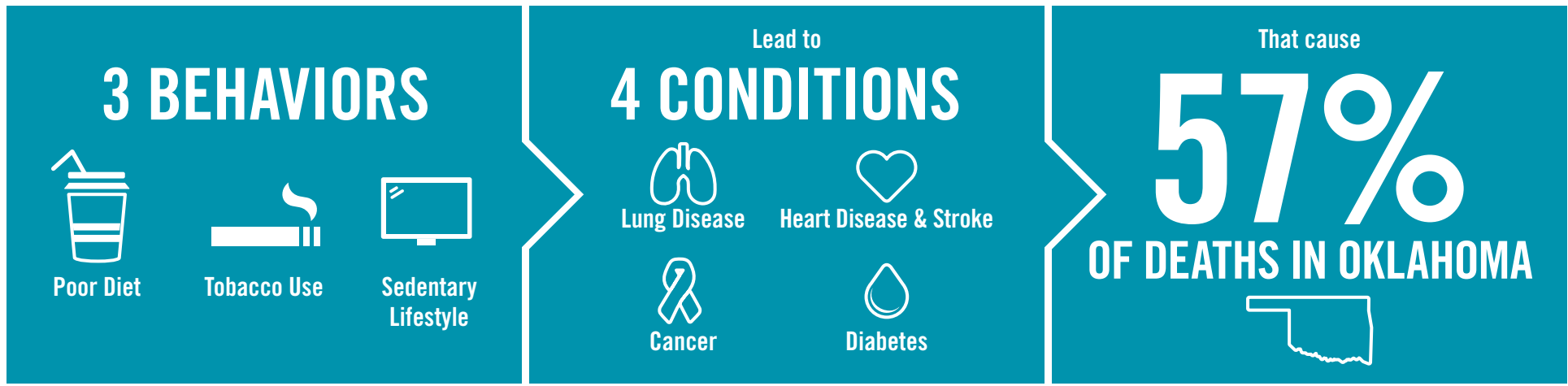
TSET funds cancer treatment and research at the Stephenson Cancer Center in support of TSET's mission to decrease the burden of cancer by promoting, coordinating and supporting innovative cancer research that allows Oklahomans of all ages to receive cutting-edge care without leaving the state.

*Patients that have participated in interventional clinical trials at the Stephenson Cancer Center



405.521.3888 | Oklahoma.gov/TSET
Board of Directors Chair Marshall Snipes
Executive Director Julie Bisbee

TSET'S MISSION: TO REDUCE PREVENTABLE DEATH IN OKLAHOMA.



TSET INVESTS IN:

- Tobacco Cessation
- Physical Activity
- Improving Nutrition
- Medical Access and Research

IN OKLAHOMA:

OBESITY:

\$1.72 BILLION

IN MEDICAL EXPENDITURES EACH YEAR

- 1 IN 6 HIGH SCHOOL STUDENTS IS OBESE
- 1 IN 6 HIGH SCHOOL STUDENTS IS OVERWEIGHT
- 1 IN 3 ADULTS IS OBESE

SMOKING:

\$1.88 BILLION

IN DIRECT HEALTHCARE COSTS EACH YEAR

- 7,500 ADULT DEATHS EACH YEAR
- 1,300 KIDS BECOME DAILY SMOKERS EACH YEAR
- \$150 MILLION IS SPENT BY THE TOBACCO INDUSTRY ANNUALLY ON MARKETING IN OKLAHOMA

MOVING THE NEEDLE:

ADULT SMOKING PREVALENCE

2001: 28.6%

2021: 16.9%

SMOKING AMONG KIDS CUT IN HALF

MORE THAN **\$580 MILLION** ADDITIONAL RESEARCH DOLLARS LEVERAGED AFTER TSET'S INVESTMENT

MORE THAN **490,000** PEOPLE SERVED BY THE OKLAHOMA TOBACCO HELPLINE

THROUGH THE HEALTH CARE WORKFORCE TRAINING COMMISSION, **99 PHYSICIANS** HAVE OR ARE CURRENTLY PRACTICING IN RURAL AND **UNDERSERVED** AREAS OF OKLAHOMA