

SENATE DISTRICT 28

SENATOR Grant Green

COUNTIES Lincoln Logan Oklahoma Pottawatomie Seminole



These TSET grants work with local community partners to help prevent cancer and cardiovascular disease by reducing tobacco use and obesity.

\$2,393,457 invested in your district FY21-FY23

\$8,684,022 invested in your district FY16-FY20

Grantees FY21-FY23

Gateway to Prevention and Recovery <i>Serving Pottawatomie County</i>	\$660,000	Lincoln County Health Department	\$573,457
		Oklahoma City-County Health Department	\$1,160,000



These TSET grants are for schools, school districts and local communities to promote wellness through policies and strategies that encourage healthy eating, physical activity and tobacco-free lifestyles.

\$580,000 total invested in your district

Healthy Communities Incentive Grants

Town of Carney	\$36,000	Town of Luther	\$36,000	City of Seminole	\$50,000
Town of Davenport	\$22,000	City of Maud	\$20,000	City of Stroud	\$20,000
City of Earlsboro	\$4,000	Town of Meeker	\$36,000	Town of Wellston	\$22,000
City of Konawa	\$36,000	City of Prague	\$2,000		

Healthy Schools Incentive Grants

Agra Public Schools	\$15,000	Justice Public School	\$15,000	Seminole Public Schools	\$5,000
Bowlegs Public Schools	\$15,000	Konawa Public Schools	\$20,000	South Rock Creek Public School	\$15,000
Carney Elementary School	\$2,000	Maud Public Schools	\$15,000	Varnum Public Schools	\$15,000
Carney High School	\$2,000	Meeker Public Schools	\$3,000	Wellston Public Schools	\$20,000
Carney Public Schools	\$15,000	New Lima Public Schools	\$3,000	Wewoka Public Schools	\$5,000
Chandler Public Schools	\$25,000	North Rock Creek Public Schools	\$6,000	White Rock School	\$15,000
Davenport Public Schools	\$15,000	Prague Public Schools	\$25,000		
Guthrie Public Schools	\$30,000	Sasakwa Public Schools	\$15,000		



These TSET grants provided food during the pandemic and support partnerships that seek to increase the availability of healthy foods.

FY21 District Cumulative: \$346,544

Grantees

Gateway to Prevention and Recovery <i>Serving Pottawatomie, Seminole and Hughes counties.</i>	\$250,000
Regional Food Bank of Oklahoma <i>Serving Oklahoma, Canadian, Cleveland and Tillman counties.</i>	\$96,544

Oklahoma Tobacco Helpline

1 800

QUIT NOW

1-800-784-8669 OKhelpline.com

A Program of TSET

TOTAL REGISTRATIONS:

District FY22:

520

District Cumulative:

12,355

The Oklahoma Tobacco Helpline provides free telephone and web-based coaching sessions, free nicotine patches, gum and lozenges to all Oklahomans each year, 24/7.

State Cumulative:

549,000

STEPHENSON CANCER CENTER

District Participation
2012-2022:

373*

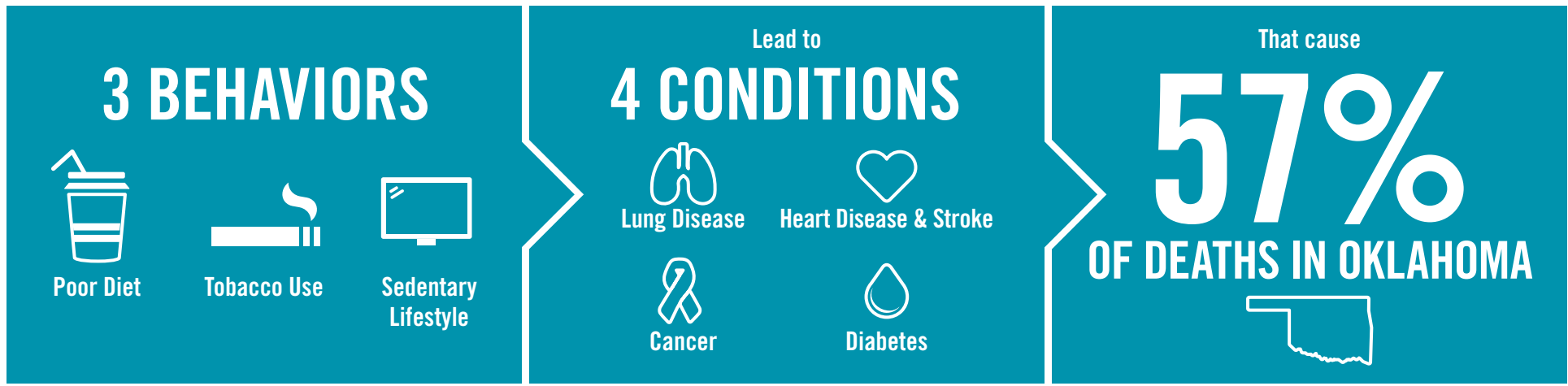
TSET funds cancer treatment and research at the Stephenson Cancer Center in support of TSET's mission to decrease the burden of cancer by promoting, coordinating and supporting innovative cancer research that allows Oklahomans of all ages to receive cutting-edge care without leaving the state.

*Patients that have participated in interventional clinical trials at the Stephenson Cancer Center



405.521.3888 | Oklahoma.gov/TSET
Board of Directors Chair Marshall Snipes
Executive Director Julie Bisbee

TSET'S MISSION: TO REDUCE PREVENTABLE DEATH IN OKLAHOMA.



TSET INVESTS IN:

- Tobacco Cessation
- Physical Activity
- Improving Nutrition
- Medical Access and Research

IN OKLAHOMA:

OBESITY:

\$1.72 BILLION

IN MEDICAL EXPENDITURES EACH YEAR

- 1 IN 6 HIGH SCHOOL STUDENTS IS OBESE
- 1 IN 6 HIGH SCHOOL STUDENTS IS OVERWEIGHT
- 1 IN 3 ADULTS IS OBESE

SMOKING:

\$1.88 BILLION

IN DIRECT HEALTHCARE COSTS EACH YEAR

- 7,500 ADULT DEATHS EACH YEAR
- 1,300 KIDS BECOME DAILY SMOKERS EACH YEAR
- \$150 MILLION IS SPENT BY THE TOBACCO INDUSTRY ANNUALLY ON MARKETING IN OKLAHOMA

MOVING THE NEEDLE:

ADULT SMOKING PREVALENCE

2001: 28.6%

2021: 16.9%

SMOKING AMONG KIDS CUT IN HALF

MORE THAN **\$580 MILLION** ADDITIONAL RESEARCH DOLLARS LEVERAGED AFTER TSET'S INVESTMENT

MORE THAN **490,000** PEOPLE SERVED BY THE OKLAHOMA TOBACCO HELPLINE

THROUGH THE HEALTH CARE WORKFORCE TRAINING COMMISSION, **99 PHYSICIANS** HAVE OR ARE CURRENTLY PRACTICING IN RURAL AND **UNDERSERVED** AREAS OF OKLAHOMA