

# SENATE DISTRICT 26

**SENATOR** Darcy Jech

**COUNTIES** Blaine Caddo Canadian Custer Kingfisher



These TSET grants work with local community partners to help prevent cancer and cardiovascular disease by reducing tobacco use and obesity.

**\$1,618,474** invested in your district FY21-FY23

**\$3,991,192** invested in your district FY16-FY20

**Grantees FY21-FY23**

Canadian County Health Department.....	<b>\$633,091</b>	Kingfisher County Health Department.....	<b>\$533,411</b>
Great Plains Youth and Family Services.....	<b>\$451,972</b>	<i>Serving Kingfisher and Blaine counties.</i>	
<i>Serving Caddo and Kiowa counties.</i>			



These TSET grants are for schools, school districts and local communities to promote wellness through policies and strategies that encourage healthy eating, physical activity and tobacco-free lifestyles.

**\$201,500** total invested in your district

**Healthy Communities Incentive Grants**

City of Anadarko.....	<b>\$10,000</b>	Town of Okeene.....	<b>\$22,000</b>	City of Weatherford.....	<b>\$50,000</b>
-----------------------	-----------------	---------------------	-----------------	--------------------------	-----------------

**Healthy Schools Incentive Grants**

Anadarko Public Schools.....	<b>\$25,000</b>	Hydro-Eakly Public Schools.....	<b>\$3,000</b>	Okeene Junior High School.....	<b>\$2,500</b>
Clinton Public Schools.....	<b>\$15,500</b>	Lomega Public Schools.....	<b>\$3,000</b>	Okeene Public Schools.....	<b>\$15,000</b>
Darlington Public School.....	<b>\$8,000</b>	Okarche Public Schools.....	<b>\$3,000</b>	Watonga Public Schools.....	<b>\$2,000</b>
El Reno Public Schools.....	<b>\$10,000</b>	Okeene Elementary School.....	<b>\$2,500</b>	Weatherford Public Schools.....	<b>\$30,000</b>



These TSET grants provided food during the pandemic and support partnerships that seek to increase the availability of healthy foods.

**FY21 District Cumulative: \$214,178**

**Grantees**

Regional Food Bank of Oklahoma.....	<b>\$96,544</b>
<i>Serving Oklahoma, Canadian, Cleveland and Tillman counties.</i>	
RSVP Enid.....	<b>\$117,634</b>
<i>Serving Alfalfa, Garfield, Grant, Kay, Kingfisher, Major, Noble and Woodward counties.</i>	

**TSET Built Environment Transformation Grants and Healthy Living Innovation Grants**

These TSET grants support communities and nonprofits in a variety of projects to improve health in local communities.

**FY23 State Cumulative: \$250,000**

**Grantees**

Healthy Schools Oklahoma – Bethany Children’s Health Center.....	<b>\$250,000</b>
<i>Okarche Elementary School is a participating school site.</i>	

Oklahoma Tobacco Helpline

**1 800**

**QUIT NOW**

1-800-784-8669    **OKhelpline.com**

A Program of TSET

**TOTAL REGISTRATIONS:**

District FY22:

**343**

District Cumulative:

**8,675**

The Oklahoma Tobacco Helpline provides free telephone and web-based coaching sessions, free nicotine patches, gum and lozenges to all Oklahomans each year, 24/7.

State Cumulative:

**549,000**

**STEPHENSON CANCER CENTER**

District Participation  
2012-2022:

**276\***

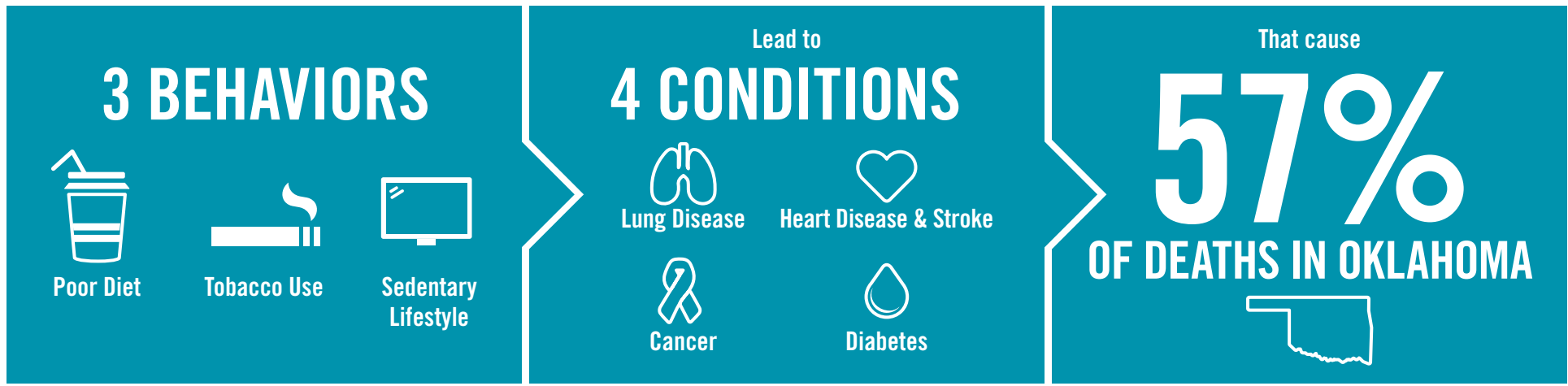
TSET funds cancer treatment and research at the Stephenson Cancer Center in support of TSET’s mission to decrease the burden of cancer by promoting, coordinating and supporting innovative cancer research that allows Oklahomans of all ages to receive cutting-edge care without leaving the state.

\*Patients that have participated in interventional clinical trials at the Stephenson Cancer Center



405.521.3888 | Oklahoma.gov/TSET  
Board of Directors Chair Marshall Snipes  
Executive Director Julie Bisbee

# TSET'S MISSION: TO REDUCE PREVENTABLE DEATH IN OKLAHOMA.



**TSET INVESTS IN:**

- Tobacco Cessation
- Physical Activity
- Improving Nutrition
- Medical Access and Research

## IN OKLAHOMA:

**OBESITY:**

**\$1.72 BILLION**

IN MEDICAL EXPENDITURES EACH YEAR

- 1 IN 6 HIGH SCHOOL STUDENTS IS OBESE
- 1 IN 6 HIGH SCHOOL STUDENTS IS OVERWEIGHT
- 1 IN 3 ADULTS IS OBESE

**SMOKING:**

**\$1.88 BILLION**

IN DIRECT HEALTHCARE COSTS EACH YEAR

- 7,500 ADULT DEATHS EACH YEAR
- 1,300 KIDS BECOME DAILY SMOKERS EACH YEAR
- \$150 MILLION IS SPENT BY THE TOBACCO INDUSTRY ANNUALLY ON MARKETING IN OKLAHOMA

## MOVING THE NEEDLE:

**ADULT SMOKING PREVALENCE**

2001: 28.6%

2021: 16.9%

**SMOKING AMONG KIDS CUT IN HALF**

MORE THAN **\$580 MILLION** ADDITIONAL RESEARCH DOLLARS LEVERAGED AFTER TSET'S INVESTMENT

MORE THAN **490,000** PEOPLE SERVED BY THE OKLAHOMA TOBACCO HELPLINE

THROUGH THE HEALTH CARE WORKFORCE TRAINING COMMISSION, **99 PHYSICIANS** HAVE OR ARE CURRENTLY PRACTICING IN RURAL AND **UNDERSERVED** AREAS OF OKLAHOMA