

SENATE DISTRICT 13

SENATOR Greg McCortney

COUNTIES Garvin Hughes McClain Murray Pontotoc



These TSET grants work with local community partners to help prevent cancer and cardiovascular disease by reducing tobacco use and obesity.

\$1,263,146 invested in your district FY21-FY23

\$5,046,666 invested in your district FY16-FY20

Grantees FY21-FY23

McClain-Garvin County Youth & Family Center, Inc. DBA Frontline Family Solutions Serving Garvin County	\$537,997
Norman Regional Health System Serving McClain County	\$542,149

Grantees FY21

Pontotoc County Health Department	\$183,000
-----------------------------------	------------------



These TSET grants are for schools, school districts and local communities to promote wellness through policies and strategies that encourage healthy eating, physical activity and tobacco-free lifestyles.

\$381,500 total invested in your district

Healthy Communities Incentive Grants

City of Ada	\$100,000	City of Holdenville	\$50,000	City of Wetumka	\$36,000
Town of Allen	\$10,000	Town of Stratford	\$10,000	City of Wynnewood	\$10,000
Town of Dustin	\$22,000	Town of Stonewall	\$10,000		

Healthy Schools Incentive Grants

Allen Public Schools	\$20,000	Latta Public Schools	\$11,500	Stuart Public School	\$15,000
Allen Elementary School	\$3,000	Maysville Public School	\$8,000	Sulphur Public Schools	\$25,000
Asher Public Schools	\$15,000	Oklahoma School for the Deaf	\$3,000	Tupelo Public Schools	\$3,000
Justice Public Schools	\$15,000	Stonewall Public School	\$15,000		



These TSET grants provided food during the pandemic and support partnerships that seek to increase the availability of healthy foods.

FY21 District Cumulative: \$250,000

Grantees

Gateway to Prevention and Recovery Serving Pottawatomie, Seminole and Hughes counties.	\$250,000
---	------------------

TSET Built Environment Transformation Grants and Healthy Living Innovation Grants

These TSET grants support communities and nonprofits in a variety of projects to improve health in local communities.

FY23 District Cumulative: \$90,750

Grantees

City of Pauls Valley	\$90,750
----------------------	-----------------

Oklahoma Tobacco Helpline

1 800

QUIT NOW

1-800-784-8669 OKhelpline.com

A Program of TSET

TOTAL REGISTRATIONS:

District FY22:

572

District Cumulative:

14,089

The Oklahoma Tobacco Helpline provides free telephone and web-based coaching sessions, free nicotine patches, gum and lozenges to all Oklahomans each year, 24/7.

State Cumulative:

549,000

STEPHENSON CANCER CENTER

District Participation
2012-2022:

277*

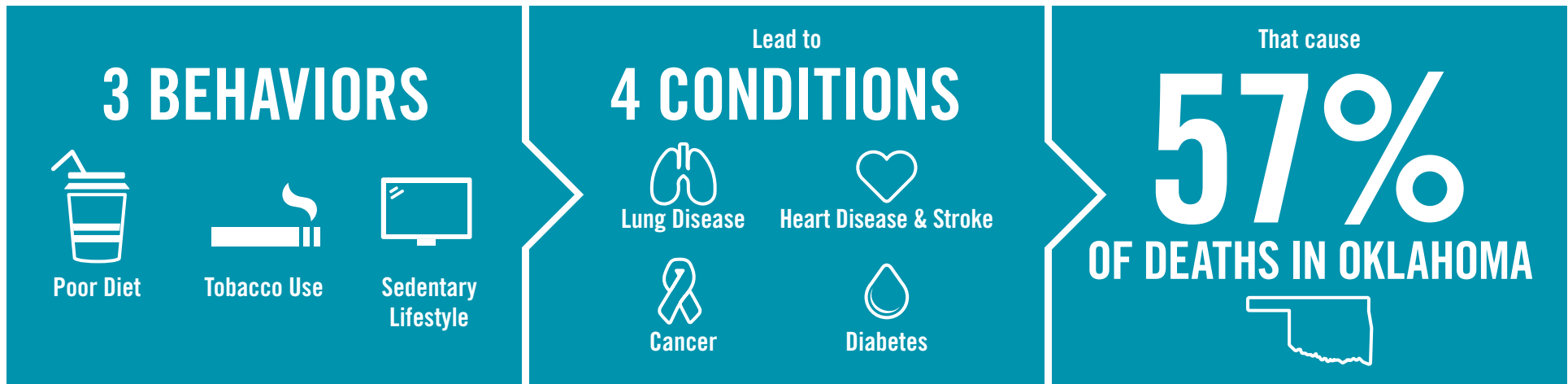
TSET funds cancer treatment and research at the Stephenson Cancer Center in support of TSET's mission to decrease the burden of cancer by promoting, coordinating and supporting innovative cancer research that allows Oklahomans of all ages to receive cutting-edge care without leaving the state.

*Patients that have participated in interventional clinical trials at the Stephenson Cancer Center



405.521.3888 | Oklahoma.gov/TSET
Board of Directors Chair Marshall Snipes
Executive Director Julie Bisbee

TSET'S MISSION: TO REDUCE PREVENTABLE DEATH IN OKLAHOMA.



TSET INVESTS IN:

- Tobacco Cessation
- Physical Activity
- Improving Nutrition
- Medical Access and Research

IN OKLAHOMA:

OBESITY:

\$1.72 BILLION

IN MEDICAL EXPENDITURES EACH YEAR

1 IN 6 HIGH SCHOOL STUDENTS IS OBESE

1 IN 6 HIGH SCHOOL STUDENTS IS OVERWEIGHT

1 IN 3 ADULTS IS OBESE

SMOKING:

\$1.88 BILLION

IN DIRECT HEALTHCARE COSTS EACH YEAR

7,500 ADULT DEATHS EACH YEAR

1,300 KIDS BECOME DAILY SMOKERS EACH YEAR

\$150 MILLION IS SPENT BY THE TOBACCO INDUSTRY ANNUALLY ON MARKETING IN OKLAHOMA

MOVING THE NEEDLE:

ADULT SMOKING PREVALENCE

2001: 28.6%

2021: 16.9%

SMOKING AMONG KIDS CUT IN HALF

MORE THAN **\$580 MILLION** ADDITIONAL RESEARCH DOLLARS LEVERAGED AFTER TSET'S INVESTMENT

MORE THAN **490,000** PEOPLE SERVED BY THE OKLAHOMA TOBACCO HELPLINE

THROUGH THE HEALTH CARE WORKFORCE TRAINING COMMISSION, **99 PHYSICIANS** HAVE OR ARE CURRENTLY PRACTICING IN RURAL AND **UNDERSERVED** AREAS OF OKLAHOMA