

HOUSE DISTRICT 52

REPRESENTATIVE Gerrid Kendrix

COUNTIES Greer Harmon Jackson Kiowa



These TSET grants work with local community partners to help prevent cancer and cardiovascular disease by reducing tobacco use and obesity.

\$451,972 invested in your district FY21-FY23

\$3,167,350 invested in your district FY16-FY20

Grantees FY21-FY23

Great Plains Youth and Family Services **\$451,972**
 Serving Caddo and Kiowa counties.



These TSET grants are for schools, school districts and local communities to promote wellness through policies and strategies that encourage healthy eating, physical activity and tobacco-free lifestyles.

\$213,000 total invested in your district

Healthy Communities Incentive Grants

City of Blair	\$20,000	Town of Olustee	\$36,000
City of Hobart	\$2,000		

Healthy Schools Incentive Grants

Altus Early Childhood Center	\$10,000	Blair Public Schools	\$15,000
Altus Elementary School	\$4,000	Granite Public Schools	\$15,000
Altus High School	\$12,500	L Mendel Rivers Elementary School	\$10,000
Altus Intermediate School	\$10,000	Navajo Public School	\$20,000
Altus Junior High School	\$10,000	Olustee Public Schools	\$8,000
Altus Primary School	\$7,500	Snyder Public Schools	\$3,000
Altus Public Schools	\$30,000		

Oklahoma Tobacco Helpline

1 800

QUIT NOW

1-800-784-8669 OKhelpline.com

A Program of TSET

TOTAL REGISTRATIONS:

District FY22:

217

District Cumulative:

5,269

The Oklahoma Tobacco Helpline provides free telephone and web-based coaching sessions, free nicotine patches, gum and lozenges to all Oklahomans each year, 24/7.

State Cumulative:

549,000

STEPHENSON CANCER CENTER

District Participation
2012-2022:

38*

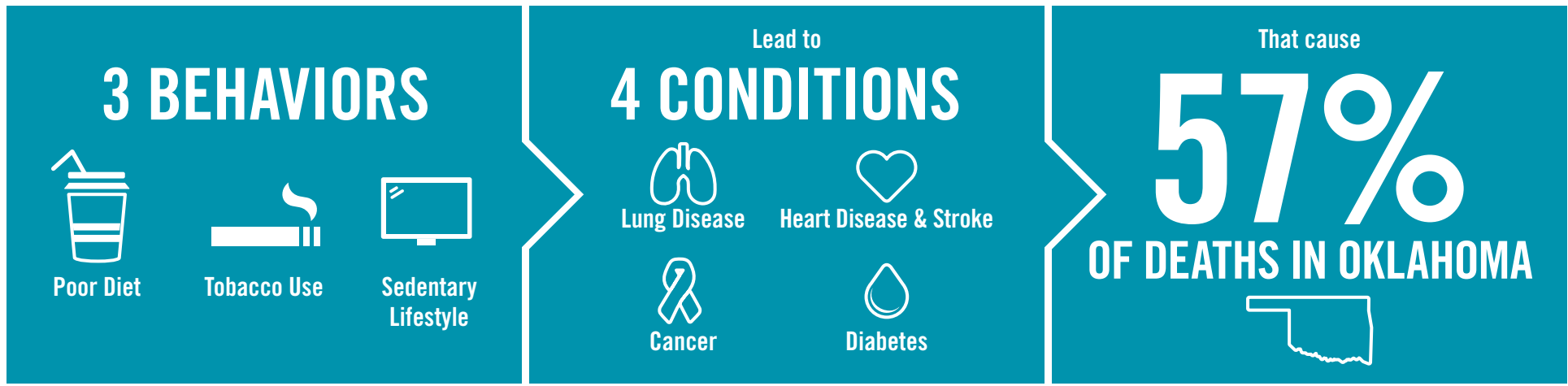
TSET funds cancer treatment and research at the Stephenson Cancer Center in support of TSET's mission to decrease the burden of cancer by promoting, coordinating and supporting innovative cancer research that allows Oklahomans of all ages to receive cutting-edge care without leaving the state.

*Patients that have participated in interventional clinical trials at the Stephenson Cancer Center



405.521.3888 | Oklahoma.gov/TSET
 Board of Directors Chair Marshall Snipes
 Executive Director Julie Bisbee

TSET'S MISSION: TO REDUCE PREVENTABLE DEATH IN OKLAHOMA.



TSET INVESTS IN:

- Tobacco Cessation
- Physical Activity
- Improving Nutrition
- Medical Access and Research

IN OKLAHOMA:

OBESITY:

\$1.72 BILLION

IN MEDICAL EXPENDITURES EACH YEAR

- 1 IN 6 HIGH SCHOOL STUDENTS IS OBESE
- 1 IN 6 HIGH SCHOOL STUDENTS IS OVERWEIGHT
- 1 IN 3 ADULTS IS OBESE

SMOKING:

\$1.88 BILLION

IN DIRECT HEALTHCARE COSTS EACH YEAR

- 7,500 ADULT DEATHS EACH YEAR
- 1,300 KIDS BECOME DAILY SMOKERS EACH YEAR
- \$150 MILLION IS SPENT BY THE TOBACCO INDUSTRY ANNUALLY ON MARKETING IN OKLAHOMA

MOVING THE NEEDLE:

ADULT SMOKING PREVALENCE

2001: 28.6%

2021: 16.9%

SMOKING AMONG KIDS CUT IN HALF

MORE THAN **\$580 MILLION** ADDITIONAL RESEARCH DOLLARS LEVERAGED AFTER TSET'S INVESTMENT

MORE THAN **490,000** PEOPLE SERVED BY THE OKLAHOMA TOBACCO HELPLINE

THROUGH THE HEALTH CARE WORKFORCE TRAINING COMMISSION, **99 PHYSICIANS** HAVE OR ARE CURRENTLY PRACTICING IN RURAL AND **UNDERSERVED AREAS** OF OKLAHOMA