

HOUSE DISTRICT 48

REPRESENTATIVE Tammy Townley

COUNTIES Carter Garvin Murray



These TSET grants work with local community partners to help prevent cancer and cardiovascular disease by reducing tobacco use and obesity.

\$981,608 invested in your district FY21-FY23

\$2,102,066 invested in your district FY16-FY20

Grantees FY21-FY23

Wichita Mountains Prevention Network Serving Carter County	\$443,611	McClain-Garvin County Youth & Family Center, Inc. DBA Frontline Family Solutions Serving Garvin County	\$537,997
---	------------------	--	------------------



These TSET grants are for schools, school districts and local communities to promote wellness through policies and strategies that encourage healthy eating, physical activity and tobacco-free lifestyles.

\$50,000 total invested in your district

Healthy Communities Incentive Grants

City of Ardmore	\$10,000	City of Springer	\$20,000
-----------------	-----------------	------------------	-----------------

Healthy Schools Incentive Grants

Ardmore Public Schools	\$10,000	Springer Middle School/High School	\$1,000
Davis Public Schools	\$5,000	Springer Public Schools	\$3,000
Springer Elementary School	\$1,000		

TSET Built Environment Transformation Grants and Healthy Living Innovation Grants

These TSET grants support communities and nonprofits in a variety of projects to improve health in local communities.

FY23 District Cumulative: **\$90,750**

Grantees

City of Pauls Valley	\$90,750
----------------------	-----------------

Oklahoma Tobacco Helpline

1 800

QUIT NOW

1-800-784-8669 OKhelpline.com

A Program of TSET

TOTAL REGISTRATIONS:

District FY22:

281

District Cumulative:

6,254

The Oklahoma Tobacco Helpline provides free telephone and web-based coaching sessions, free nicotine patches, gum and lozenges to all Oklahomans each year, 24/7.

State Cumulative:

549,000

STEPHENSON CANCER CENTER

District Participation
2012-2022:

76*

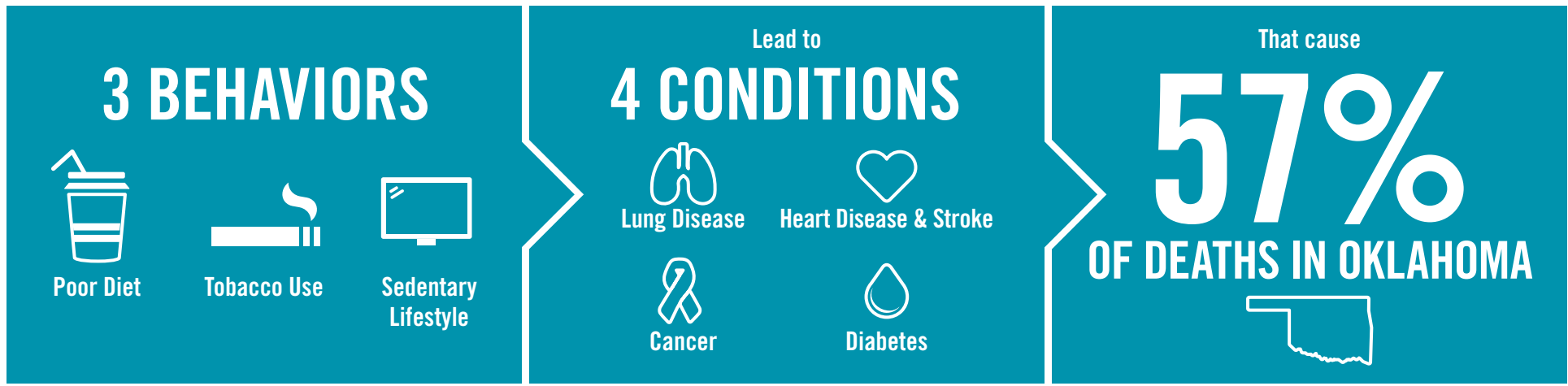
TSET funds cancer treatment and research at the Stephenson Cancer Center in support of TSET's mission to decrease the burden of cancer by promoting, coordinating and supporting innovative cancer research that allows Oklahomans of all ages to receive cutting-edge care without leaving the state.

*Patients that have participated in interventional clinical trials at the Stephenson Cancer Center



405.521.3888 | Oklahoma.gov/TSET
Board of Directors Chair Marshall Snipes
Executive Director Julie Bisbee

TSET'S MISSION: TO REDUCE PREVENTABLE DEATH IN OKLAHOMA.



TSET INVESTS IN:

- Tobacco Cessation
- Physical Activity
- Improving Nutrition
- Medical Access and Research

IN OKLAHOMA:

OBESITY:

\$1.72 BILLION

IN MEDICAL EXPENDITURES EACH YEAR

- 1 IN 6 HIGH SCHOOL STUDENTS IS OBESE
- 1 IN 6 HIGH SCHOOL STUDENTS IS OVERWEIGHT
- 1 IN 3 ADULTS IS OBESE

SMOKING:

\$1.88 BILLION

IN DIRECT HEALTHCARE COSTS EACH YEAR

- 7,500 ADULT DEATHS EACH YEAR
- 1,300 KIDS BECOME DAILY SMOKERS EACH YEAR
- \$150 MILLION IS SPENT BY THE TOBACCO INDUSTRY ANNUALLY ON MARKETING IN OKLAHOMA

MOVING THE NEEDLE:

ADULT SMOKING PREVALENCE

2001: 28.6%

2021: 16.9%

SMOKING AMONG KIDS CUT IN HALF

MORE THAN **\$580 MILLION** ADDITIONAL RESEARCH DOLLARS LEVERAGED AFTER TSET'S INVESTMENT

MORE THAN **490,000** PEOPLE SERVED BY THE OKLAHOMA TOBACCO HELPLINE

THROUGH THE HEALTH CARE WORKFORCE TRAINING COMMISSION, **99 PHYSICIANS** HAVE OR ARE CURRENTLY PRACTICING IN RURAL AND **UNDERSERVED AREAS** OF OKLAHOMA