

HOUSE DISTRICT 38

REPRESENTATIVE John Pfeiffer

COUNTIES Garfield Grant Kay Logan Noble



These TSET grants work with local community partners to help prevent cancer and cardiovascular disease by reducing tobacco use and obesity.

\$1,264,000 invested in your district FY21-FY23

\$3,903,560 invested in your district FY16-FY20

Grantees FY21-FY23

Rural Health Projects, Inc Serving Garfield County	\$710,800	Oklahoma State University – Department of Wellness – Sponsored Programs Serving Kay County	\$553,200
---	------------------	--	------------------



These TSET grants are for schools, school districts and local communities to promote wellness through policies and strategies that encourage healthy eating, physical activity and tobacco-free lifestyles.

\$285,000 total invested in your district

Healthy Communities Incentive Grants

Town of Cedar Valley	\$10,000	Town of Lamont	\$10,000
City of Guthrie	\$120,000	City of Perry	\$25,000
City of Newkirk	\$22,000		

Healthy Schools Incentive Grants

Crescent Public Schools	\$20,000	Pond-Creek Hunter	\$8,000
Guthrie Public Schools	\$30,000	Tonkawa Public School	\$20,000
Newkirk Public Schools	\$20,000		



These TSET grants provided food during the pandemic and support partnerships that seek to increase the availability of healthy foods.

FY21 District Cumulative: \$526,139

Grantees

Hunger Free Oklahoma Serving Delaware, Garfield, Jackson, Kay, Kiowa, Marshall, Okfuskee, Seminole and Washington counties.	\$408,505
RSVP Enid Serving Alfalfa, Garfield, Grant, Kay, Kingfisher, Major, Noble and Woodward counties.	\$117,634



A Program of TSET

TOTAL REGISTRATIONS:

District FY22:

170

District Cumulative:

4,909

The Oklahoma Tobacco Helpline provides free telephone and web-based coaching sessions, free nicotine patches, gum and lozenges to all Oklahomans each year, 24/7.

State Cumulative:

549,000

STEPHENSON CANCER CENTER

District Participation
2012-2022:

173*

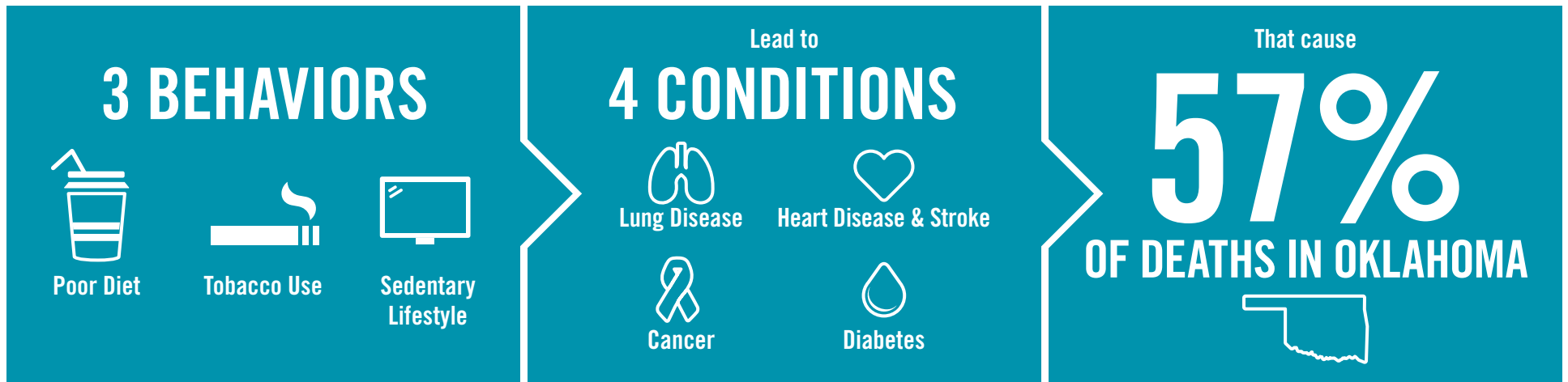
TSET funds cancer treatment and research at the Stephenson Cancer Center in support of TSET's mission to decrease the burden of cancer by promoting, coordinating and supporting innovative cancer research that allows Oklahomans of all ages to receive cutting-edge care without leaving the state.

*Patients that have participated in interventional clinical trials at the Stephenson Cancer Center



405.521.3888 | Oklahoma.gov/TSET
Board of Directors Chair Marshall Snipes
Executive Director Julie Bisbee

TSET'S MISSION: TO REDUCE PREVENTABLE DEATH IN OKLAHOMA.



TSET INVESTS IN:

- Tobacco Cessation
- Physical Activity
- Improving Nutrition
- Medical Access and Research

IN OKLAHOMA:

OBESITY:

\$1.72 BILLION

IN MEDICAL EXPENDITURES EACH YEAR

- 1 IN 6 HIGH SCHOOL STUDENTS IS OBESE
- 1 IN 6 HIGH SCHOOL STUDENTS IS OVERWEIGHT
- 1 IN 3 ADULTS IS OBESE

SMOKING:

\$1.88 BILLION

IN DIRECT HEALTHCARE COSTS EACH YEAR

- 7,500 ADULT DEATHS EACH YEAR
- 1,300 KIDS BECOME DAILY SMOKERS EACH YEAR
- \$150 MILLION IS SPENT BY THE TOBACCO INDUSTRY ANNUALLY ON MARKETING IN OKLAHOMA

MOVING THE NEEDLE:

ADULT SMOKING PREVALENCE

2001: 28.6%

2021: 16.9%

SMOKING AMONG KIDS CUT IN HALF

MORE THAN **\$580 MILLION** ADDITIONAL RESEARCH DOLLARS LEVERAGED AFTER TSET'S INVESTMENT

MORE THAN **490,000** PEOPLE SERVED BY THE OKLAHOMA TOBACCO HELPLINE

THROUGH THE HEALTH CARE WORKFORCE TRAINING COMMISSION, **99 PHYSICIANS** HAVE OR ARE CURRENTLY PRACTICING IN RURAL AND **UNDERSERVED AREAS** OF OKLAHOMA