

# HOUSE DISTRICT 33

**REPRESENTATIVE** John Talley

**COUNTIES** Logan Payne



These TSET grants work with local community partners to help prevent cancer and cardiovascular disease by reducing tobacco use and obesity.

**\$720,500** invested in your district FY21-FY23

**\$2,881,310** invested in your district FY16-FY20

**Grantees FY21-FY23**

Oklahoma State University – Department of Wellness – Sponsored Programs ..... **\$720,500**  
 Serving Payne County



These TSET grants are for schools, school districts and local communities to promote wellness through policies and strategies that encourage healthy eating, physical activity and tobacco-free lifestyles.

**\$90,500** total invested in your district

**Healthy Communities Incentive Grants**

Town of Langston City ..... **\$10,000**  
 City of Yale ..... **\$10,000**

**Healthy Schools Incentive Grants**

Coyle Elementary School ..... **\$1,500**  
 Coyle High School ..... **\$1,000**  
 Coyle Public Schools ..... **\$3,000**  
 Yale Public Schools ..... **\$15,000**  
 Ripley Public Schools ..... **\$15,000**  
 Stillwater Public Schools ..... **\$30,000**  
 Stillwater Middle School ..... **\$5,000**

Oklahoma Tobacco Helpline

**1 800**

**QUIT NOW**

1-800-784-8669    [OKhelpline.com](http://OKhelpline.com)

A Program of TSET

**TOTAL REGISTRATIONS:**

District FY22:

**194**

District Cumulative:

**3,924**

The Oklahoma Tobacco Helpline provides free telephone and web-based coaching sessions, free nicotine patches, gum and lozenges to all Oklahomans each year, 24/7.

State Cumulative:

**549,000**

**STEPHENSON CANCER CENTER**

District Participation  
 2012-2022:

**113\***

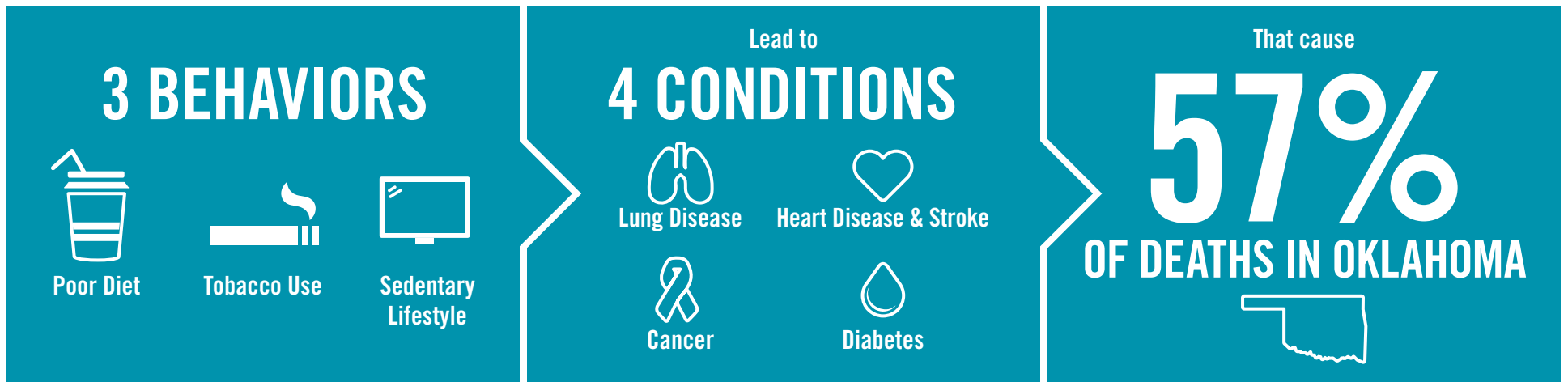
TSET funds cancer treatment and research at the Stephenson Cancer Center in support of TSET's mission to decrease the burden of cancer by promoting, coordinating and supporting innovative cancer research that allows Oklahomans of all ages to receive cutting-edge care without leaving the state.

\*Patients that have participated in interventional clinical trials at the Stephenson Cancer Center



405.521.3888 | Oklahoma.gov/TSET  
 Board of Directors Chair Marshall Snipes  
 Executive Director Julie Bisbee

# TSET'S MISSION: TO REDUCE PREVENTABLE DEATH IN OKLAHOMA.



**TSET INVESTS IN:**

- Tobacco Cessation
- Physical Activity
- Improving Nutrition
- Medical Access and Research

## IN OKLAHOMA:

**OBESITY:**

**\$1.72 BILLION**

IN MEDICAL EXPENDITURES EACH YEAR

- 1 IN 6 HIGH SCHOOL STUDENTS IS OBESE
- 1 IN 6 HIGH SCHOOL STUDENTS IS OVERWEIGHT
- 1 IN 3 ADULTS IS OBESE

**SMOKING:**

**\$1.88 BILLION**

IN DIRECT HEALTHCARE COSTS EACH YEAR

- 7,500 ADULT DEATHS EACH YEAR
- 1,300 KIDS BECOME DAILY SMOKERS EACH YEAR
- \$150 MILLION IS SPENT BY THE TOBACCO INDUSTRY ANNUALLY ON MARKETING IN OKLAHOMA

## MOVING THE NEEDLE:

**ADULT SMOKING PREVALENCE**

2001: 28.6%

2021: 16.9%

**SMOKING AMONG KIDS CUT IN HALF**

MORE THAN **\$580 MILLION** ADDITIONAL RESEARCH DOLLARS LEVERAGED AFTER TSET'S INVESTMENT

MORE THAN **490,000** PEOPLE SERVED BY THE OKLAHOMA TOBACCO HELPLINE

THROUGH THE HEALTH CARE WORKFORCE TRAINING COMMISSION, **99 PHYSICIANS** HAVE OR ARE CURRENTLY PRACTICING IN RURAL AND **UNDERSERVED AREAS** OF OKLAHOMA