

# HOUSE DISTRICT 28

**REPRESENTATIVE** Danny Williams

**COUNTIES** Pottawatomie Seminole



These TSET grants work with local community partners to help prevent cancer and cardiovascular disease by reducing tobacco use and obesity.

**\$660,000** invested in your district FY21-FY23

**\$2,747,360** invested in your district FY16-FY20

**Grantees FY21-FY23**

Gateway to Prevention and Recovery ..... **\$660,000**  
 Serving Pottawatomie County



These TSET grants are for schools, school districts and local communities to promote wellness through policies and strategies that encourage healthy eating, physical activity and tobacco-free lifestyles.

**\$251,500** total invested in your district

**Healthy Communities Incentive Grants**

City of Konawa .....	<b>\$36,000</b>	City of McLoud .....	<b>\$10,000</b>
City of Maud .....	<b>\$20,000</b>	City of Seminole .....	<b>\$50,000</b>

**Healthy Schools Incentive Grants**

Asher Public Schools .....	<b>\$15,000</b>	McLoud Jr. High School .....	<b>\$1,500</b>
Bowlegs Public Schools .....	<b>\$15,000</b>	McLoud Public Schools .....	<b>\$5,000</b>
Justice Public School .....	<b>\$15,000</b>	New Lima Public Schools .....	<b>\$3,000</b>
Konawa Public Schools .....	<b>\$20,000</b>	Sasakwa Public Schools .....	<b>\$15,000</b>
Maud Public Schools .....	<b>\$15,000</b>	Seminole Public Schools .....	<b>\$5,000</b>
McLoud Elementary School .....	<b>\$4,000</b>	Varnum Public Schools .....	<b>\$15,000</b>
McLoud High School .....	<b>\$2,000</b>	Wewoka Public Schools .....	<b>\$5,000</b>



These TSET grants provided food during the pandemic and support partnerships that seek to increase the availability of healthy foods.

**FY21 District Cumulative: \$658,505**

**Grantees**

Gateway to Prevention and Recovery ..... **\$250,000**  
 Serving Pottawatomie, Seminole and Hughes counties.  
 Hunger Free Oklahoma ..... **\$408,505**  
 Serving Delaware, Garfield, Jackson, Kay, Kiowa, Marshall, Okfuskee, Seminole and Washington counties.

Oklahoma Tobacco Helpline

1 800

QUIT NOW

1-800-784-8669    **OKhelpline.com**

A Program of TSET

**TOTAL REGISTRATIONS:**

District FY22:

**291**

District Cumulative:

**6,290**

The Oklahoma Tobacco Helpline provides free telephone and web-based coaching sessions, free nicotine patches, gum and lozenges to all Oklahomans each year, 24/7.

State Cumulative:

**549,000**

**STEPHENSON CANCER CENTER**

District Participation  
2012-2022:

**220\***

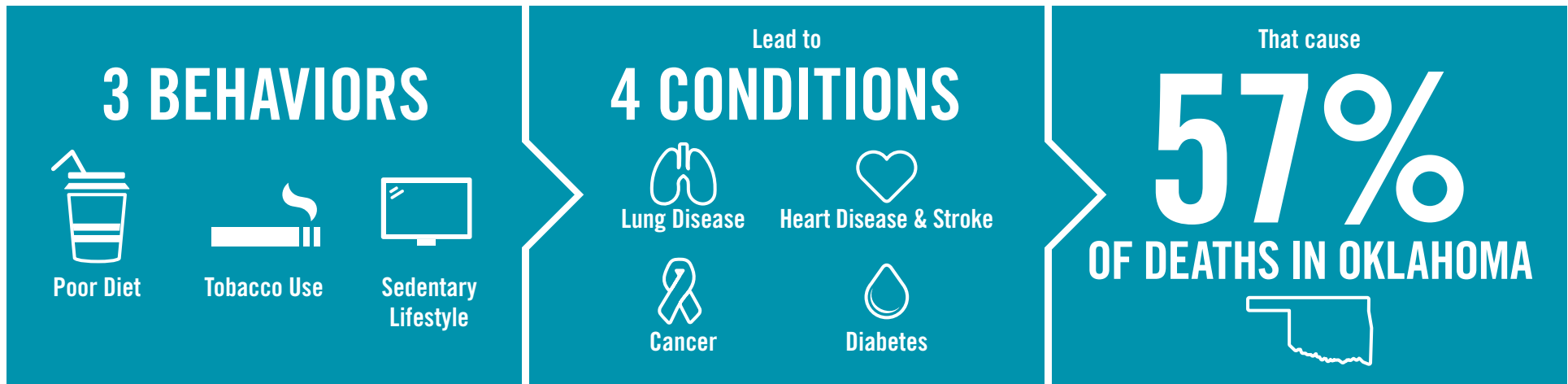
TSET funds cancer treatment and research at the Stephenson Cancer Center in support of TSET's mission to decrease the burden of cancer by promoting, coordinating and supporting innovative cancer research that allows Oklahomans of all ages to receive cutting-edge care without leaving the state.

\*Patients that have participated in interventional clinical trials at the Stephenson Cancer Center



405.521.3888 | Oklahoma.gov/TSET  
 Board of Directors Chair Marshall Snipes  
 Executive Director Julie Bisbee

# TSET'S MISSION: TO REDUCE PREVENTABLE DEATH IN OKLAHOMA.



**TSET INVESTS IN:**

- Tobacco Cessation
- Physical Activity
- Improving Nutrition
- Medical Access and Research

## IN OKLAHOMA:

**OBESITY:**

**\$1.72 BILLION**

IN MEDICAL EXPENDITURES EACH YEAR

- 1 IN 6 HIGH SCHOOL STUDENTS IS OBESE
- 1 IN 6 HIGH SCHOOL STUDENTS IS OVERWEIGHT
- 1 IN 3 ADULTS IS OBESE

**SMOKING:**

**\$1.88 BILLION**

IN DIRECT HEALTHCARE COSTS EACH YEAR

- 7,500 ADULT DEATHS EACH YEAR
- 1,300 KIDS BECOME DAILY SMOKERS EACH YEAR
- \$150 MILLION IS SPENT BY THE TOBACCO INDUSTRY ANNUALLY ON MARKETING IN OKLAHOMA

## MOVING THE NEEDLE:

**ADULT SMOKING PREVALENCE**

2001: 28.6%

2021: 16.9%

**SMOKING AMONG KIDS CUT IN HALF**

MORE THAN **\$580 MILLION** ADDITIONAL RESEARCH DOLLARS LEVERAGED AFTER TSET'S INVESTMENT

MORE THAN **490,000** PEOPLE SERVED BY THE OKLAHOMA TOBACCO HELPLINE

THROUGH THE HEALTH CARE WORKFORCE TRAINING COMMISSION, **99 PHYSICIANS** HAVE OR ARE CURRENTLY PRACTICING IN RURAL AND **UNDERSERVED AREAS** OF OKLAHOMA