

HOUSE DISTRICT 15

REPRESENTATIVE Randy Randleman

COUNTIES Haskell LeFlore McIntosh Muskogee Pittsburg



These TSET grants work with local community partners to help prevent cancer and cardiovascular disease by reducing tobacco use and obesity.

\$1,918,169 invested in your district FY21-FY23 **\$6,969,180** invested in your district FY16-FY20

Grantees FY21-FY23

KI BOIS Community Action Foundation, Inc. <i>Serving Haskell County</i>	\$469,080
LeFlore County Youth Services	\$569,697
Muskogee County Health Department	\$721,523

Grantees FY21

Pittsburg County Health Department	\$157,869
------------------------------------	------------------



These TSET grants are for schools, school districts and local communities to promote wellness through policies and strategies that encourage healthy eating, physical activity and tobacco-free lifestyles.

\$185,000 total invested in your district

Healthy Communities Incentive Grants

City of Braggs	\$20,000	City of Warner	\$20,000
City of Eufaula	\$20,000	Town of Webbers Falls	\$20,000
Town of Porum	\$36,000		

Healthy Schools Incentive Grants

Braggs Public Schools	\$3,000	Indianola Public Schools	\$15,000
Canadian Public Schools	\$15,000	Porum Public Schools	\$3,000
Gore Public Schools	\$5,000	Whitefield Public School	\$3,000
Henryetta Public Schools	\$5,000	Warner Public Schools	\$20,000



These TSET grants are focused investments made in a defined area of need or with a defined audience.

FY23 County Cumulative: \$120,000

Grantees

KI BOIS Community Action Foundation, Inc. <i>Serving Pittsburg County</i>	\$120,000
--	------------------

Oklahoma Tobacco Helpline

1 800 QUIT NOW

1-800-784-8669 **OKhelpline.com**

A Program of TSET

TOTAL REGISTRATIONS:

District FY22:

202

District Cumulative:

5,767

The Oklahoma Tobacco Helpline provides free telephone and web-based coaching sessions, free nicotine patches, gum and lozenges to all Oklahomans each year, 24/7.

State Cumulative:

549,000

STEPHENSON CANCER CENTER

District Participation
2012-2022:

36*

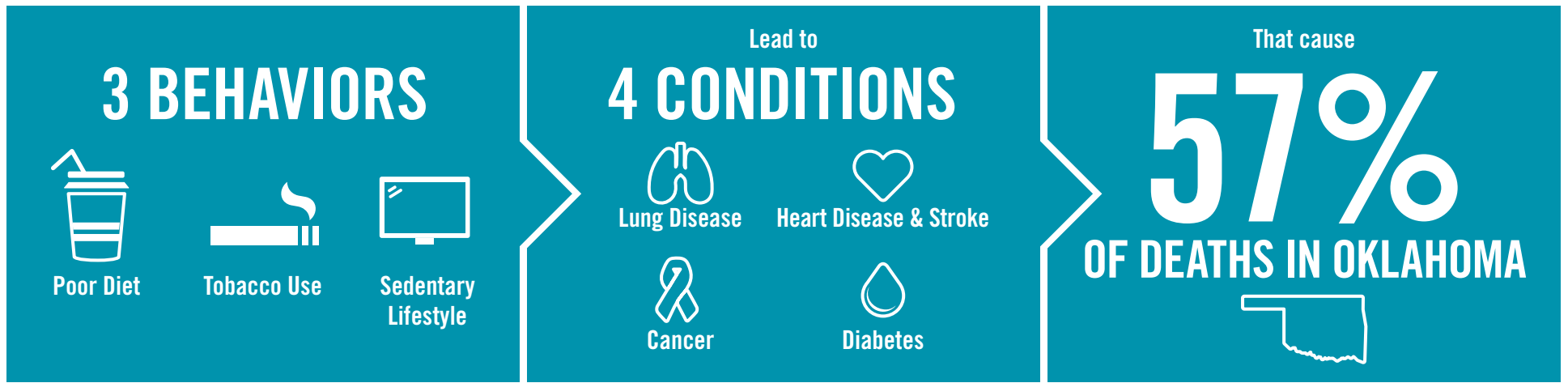
TSET funds cancer treatment and research at the Stephenson Cancer Center in support of TSET's mission to decrease the burden of cancer by promoting, coordinating and supporting innovative cancer research that allows Oklahomans of all ages to receive cutting-edge care without leaving the state.

*Patients that have participated in interventional clinical trials at the Stephenson Cancer Center



405.521.3888 | Oklahoma.gov/TSET
Board of Directors Chair Marshall Snipes
Executive Director Julie Bisbee

TSET'S MISSION: TO REDUCE PREVENTABLE DEATH IN OKLAHOMA.



TSET INVESTS IN:

- Tobacco Cessation
- Physical Activity
- Improving Nutrition
- Medical Access and Research

IN OKLAHOMA:

OBESITY:

\$1.72 BILLION

IN MEDICAL EXPENDITURES EACH YEAR

- 1 IN 6 HIGH SCHOOL STUDENTS IS OBESE
- 1 IN 6 HIGH SCHOOL STUDENTS IS OVERWEIGHT
- 1 IN 3 ADULTS IS OBESE

SMOKING:

\$1.88 BILLION

IN DIRECT HEALTHCARE COSTS EACH YEAR

- 7,500 ADULT DEATHS EACH YEAR
- 1,300 KIDS BECOME DAILY SMOKERS EACH YEAR
- \$150 MILLION IS SPENT BY THE TOBACCO INDUSTRY ANNUALLY ON MARKETING IN OKLAHOMA

MOVING THE NEEDLE:

ADULT SMOKING PREVALENCE

2001: 28.6%

2021: 16.9%

SMOKING AMONG KIDS CUT IN HALF

MORE THAN **\$580 MILLION** ADDITIONAL RESEARCH DOLLARS LEVERAGED AFTER TSET'S INVESTMENT

MORE THAN **490,000** PEOPLE SERVED BY THE OKLAHOMA TOBACCO HELPLINE

THROUGH THE HEALTH CARE WORKFORCE TRAINING COMMISSION, **99 PHYSICIANS** HAVE OR ARE CURRENTLY PRACTICING IN RURAL AND **UNDERSERVED AREAS** OF OKLAHOMA