

HOUSE DISTRICT 10

REPRESENTATIVE Judd Strom

COUNTIES Nowata Osage Washington



These TSET grants work with local community partners to help prevent cancer and cardiovascular disease by reducing tobacco use and obesity.

\$394,937 invested in your district FY21-FY23

\$735,000 invested in your district FY16-FY20

Grantees FY21-FY23

Nowata CAN.....	\$394,937
Serving Nowata County	



These TSET grants are for schools, school districts and local communities to promote wellness through policies and strategies that encourage healthy eating, physical activity and tobacco-free lifestyles.

\$173,000 total invested in your district

Healthy Communities Incentive Grants

City of Bartlesville.....	\$30,000
City of Delaware.....	\$36,000
Town of South Coffeyville.....	\$36,000
Town of Wann.....	\$36,000

Healthy Schools Incentive Grants

Nowata Public Schools.....	\$20,000
South Coffeyville Public School.....	\$15,000



These TSET grants provided food during the pandemic and support partnerships that seek to increase the availability of healthy foods.

FY21 District Cumulative: \$408,505

Grantees

Hunger Free Oklahoma.....	\$408,505
Serving Delaware, Garfield, Jackson, Kay, Kiowa, Marshall, Okfuskee, Seminole and Washington counties.	

TSET Built Environment Transformation Grants and Healthy Living Innovation Grants

These TSET grants support communities and nonprofits in a variety of projects to improve health in local communities.

FY23 State Cumulative: \$250,000

Grantees

Healthy Schools Oklahoma – Bethany Children’s Health Center.....	\$250,000
Oklahoma Union Elementary School is a participating school site.	



A Program of TSET

TOTAL REGISTRATIONS:

District FY22:

309

District Cumulative:

5,843

The Oklahoma Tobacco Helpline provides free telephone and web-based coaching sessions, free nicotine patches, gum and lozenges to all Oklahomans each year, 24/7.

State Cumulative:

549,000

STEPHENSON CANCER CENTER

District Participation 2012-2022:

11*

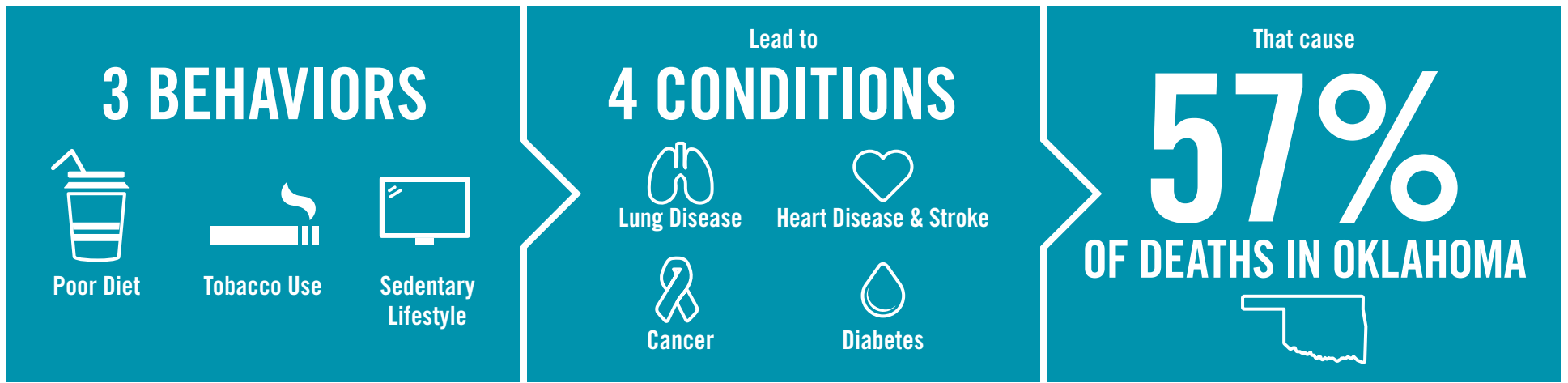
TSET funds cancer treatment and research at the Stephenson Cancer Center in support of TSET’s mission to decrease the burden of cancer by promoting, coordinating and supporting innovative cancer research that allows Oklahomans of all ages to receive cutting-edge care without leaving the state.

*Patients that have participated in interventional clinical trials at the Stephenson Cancer Center



405.521.3888 | Oklahoma.gov/TSET
Board of Directors Chair Marshall Snipes
Executive Director Julie Bisbee

TSET'S MISSION: TO REDUCE PREVENTABLE DEATH IN OKLAHOMA.



TSET INVESTS IN:

- Tobacco Cessation
- Physical Activity
- Improving Nutrition
- Medical Access and Research

IN OKLAHOMA:

OBESITY:

\$1.72 BILLION

IN MEDICAL EXPENDITURES EACH YEAR

- 1 IN 6 HIGH SCHOOL STUDENTS IS OBESE
- 1 IN 6 HIGH SCHOOL STUDENTS IS OVERWEIGHT
- 1 IN 3 ADULTS IS OBESE

SMOKING:

\$1.88 BILLION

IN DIRECT HEALTHCARE COSTS EACH YEAR

- 7,500 ADULT DEATHS EACH YEAR
- 1,300 KIDS BECOME DAILY SMOKERS EACH YEAR
- \$150 MILLION IS SPENT BY THE TOBACCO INDUSTRY ANNUALLY ON MARKETING IN OKLAHOMA

MOVING THE NEEDLE:

ADULT SMOKING PREVALENCE

2001: 28.6%

2021: 16.9%

SMOKING AMONG KIDS CUT IN HALF

MORE THAN **\$580 MILLION** ADDITIONAL RESEARCH DOLLARS LEVERAGED AFTER TSET'S INVESTMENT

MORE THAN **490,000** PEOPLE SERVED BY THE OKLAHOMA TOBACCO HELPLINE

THROUGH THE HEALTH CARE WORKFORCE TRAINING COMMISSION, **99 PHYSICIANS** HAVE OR ARE CURRENTLY PRACTICING IN RURAL AND **UNDERSERVED AREAS** OF OKLAHOMA