

PITTSBURG COUNTY

Oklahoma Tobacco Helpline

1 800 QUIT NOW

1-800-784-8669 **OKhelpline.com**

A Program of TSET



The Oklahoma Tobacco Helpline provides free telephone and web-based coaching sessions, free nicotine patches, gum and lozenges to all Oklahomans each year, 24/7.

TOTAL REGISTRATIONS:

County FY22:

397

County Cumulative:

8,476

State Cumulative:

549,000



405.521.3888 | Oklahoma.gov/TSET
Board of Directors Chair Marshall Snipes
Executive Director Julie Bisbee

HEALTH INDICATORS

2021 OKLAHOMA STATE DEPARTMENT OF HEALTH



HEART DISEASE DEATHS
(Rate per 100,000)



CANCER DEATHS
(Rate per 100,000)



ADULT SMOKING RATE
(%)



OBESITY RATE
(%)



PREVALENCE OF DIABETES
(%)

COUNTY	HEART DISEASE DEATHS (Rate per 100,000)	CANCER DEATHS (Rate per 100,000)	ADULT SMOKING RATE (%)	OBESITY RATE (%)	PREVALENCE OF DIABETES (%)
COUNTY	327.2	228.4	28%	33.8%	11.5%
OKLAHOMA	264.2	175.1	16.9%	39.4%	12.8%
U.S.	173.8	146.6	14.4%	33.9%	10.9%



These TSET grants work with local community partners to help prevent cancer and cardiovascular disease by reducing tobacco use and obesity.

\$157,869 invested in your community FY21–FY23

\$1,434,100 invested in your community FY16–FY20

Grantees FY21

Pittsburg County Health Department **\$157,869**



These TSET grants are for schools, school districts and local communities to promote wellness through policies and strategies that encourage healthy eating, physical activity and tobacco-free lifestyles.

\$398,000 invested in your community

Healthy Communities Incentive Grants

Town of Crowder	\$20,000	Town of Krebs	\$20,000
Town of Haileyville	\$36,000	City of McAlester	\$120,000
Town of Hartshorne	\$20,000	Town of Pittsburg	\$36,000
Town of Kiowa	\$20,000	Town of Savanna	\$36,000

Healthy Schools Incentive Grants

Canadian Public Schools	\$15,000	Krebs Public Schools	\$15,000
Haileyville Public Schools	\$15,000	McAlester Public Schools	\$30,000
Indianola Public Schools	\$15,000		

TSET Built Environment Transformation Grants and Healthy Living Innovation Grants

These TSET grants support communities and nonprofits in a variety of projects to improve health in local communities.

FY23 County Cumulative: \$180,915

Grantees

City of McAlester **\$180,915**

TAG TSET Targeted Achievement Grants

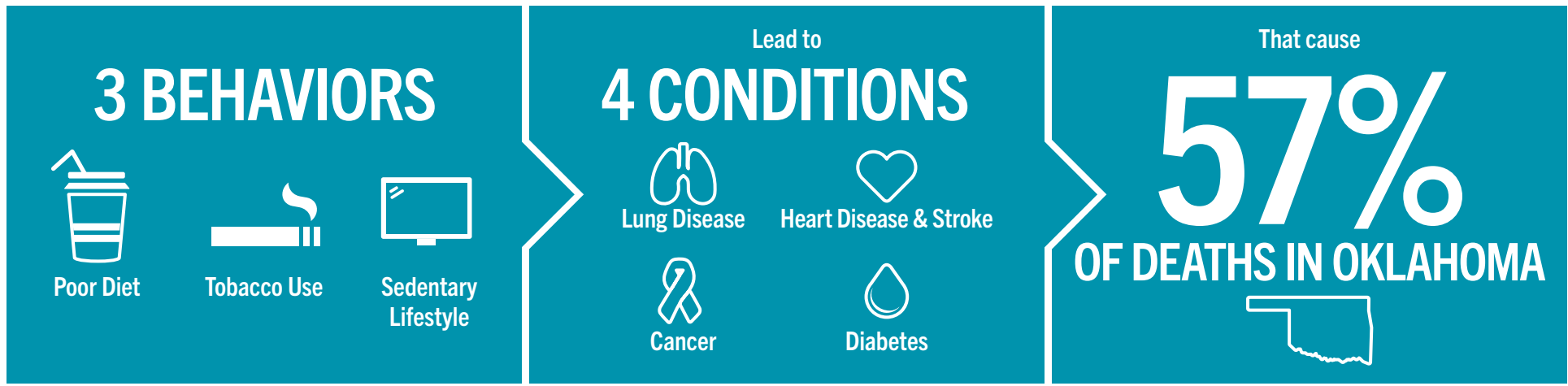
These TSET grants are focused investments made in a defined area of need or with a defined audience.

FY23 County Cumulative: \$120,000

Grantees

KI BOIS Community Action Foundation, Inc. **\$120,000**
Serving Pittsburg County.

TSET'S MISSION: TO REDUCE PREVENTABLE DEATH IN OKLAHOMA.



TSET INVESTS IN:

- Tobacco Cessation
- Physical Activity
- Improving Nutrition
- Medical Access and Research

IN OKLAHOMA:

OBESITY:

\$1.72 BILLION

IN MEDICAL EXPENDITURES EACH YEAR

- 1 IN 6 HIGH SCHOOL STUDENTS IS OBESE
- 1 IN 6 HIGH SCHOOL STUDENTS IS OVERWEIGHT
- 1 IN 3 ADULTS IS OBESE

SMOKING:

\$1.88 BILLION

IN DIRECT HEALTHCARE COSTS EACH YEAR

- 7,500 ADULT DEATHS EACH YEAR
- 1,300 KIDS BECOME DAILY SMOKERS EACH YEAR
- \$150 MILLION IS SPENT BY THE TOBACCO INDUSTRY ANNUALLY TO MARKET TOBACCO IN OKLAHOMA

MOVING THE NEEDLE:

ADULT SMOKING PREVALENCE

2001: 28.6%

2021: 16.9%

SMOKING AMONG KIDS CUT IN HALF

MORE THAN **\$580 MILLION** ADDITIONAL RESEARCH DOLLARS LEVERAGED AFTER TSET'S INVESTMENT

MORE THAN **490,000** PEOPLE SERVED BY THE OKLAHOMA TOBACCO HELPLINE

THROUGH THE HEALTH CARE WORKFORCE TRAINING COMMISSION, **99 PHYSICIANS** HAVE OR ARE CURRENTLY PRACTICING IN RURAL AND UNDERSERVED AREAS OF OKLAHOMA