

COTTON COUNTY

Oklahoma Tobacco Helpline

1 800 QUIT NOW

1-800-784-8669 **OKhelpline.com**

A Program of TSET



The Oklahoma Tobacco Helpline provides free telephone and web-based coaching sessions, free nicotine patches, gum and lozenges to all Oklahomans each year, 24/7.

TOTAL REGISTRATIONS:

County FY22:

22

County Cumulative:

853

State Cumulative:

549,000

HEALTH INDICATORS

2021 OKLAHOMA STATE DEPARTMENT OF HEALTH

	HEART DISEASE DEATHS (Rate per 100,000)	CANCER DEATHS (Rate per 100,000)	ADULT SMOKING RATE (%)	OBESITY RATE (%)	PREVALENCE OF DIABETES (%)
COUNTY	305.1	178.6	19.4%	51.2%	13.1%
OKLAHOMA	264.2	175.1	16.9%	39.4%	12.8%
U.S.	173.8	146.6	14.4%	33.9%	10.9%



These TSET grants work with local community partners to help prevent cancer and cardiovascular disease by reducing tobacco use and obesity.

There are no Healthy Living Program Grants at this time. Visit OKLAHOMA.GOV/TSET to learn more.



These TSET grants are for schools, school districts and local communities to promote wellness through policies and strategies that encourage healthy eating, physical activity and tobacco-free lifestyles.

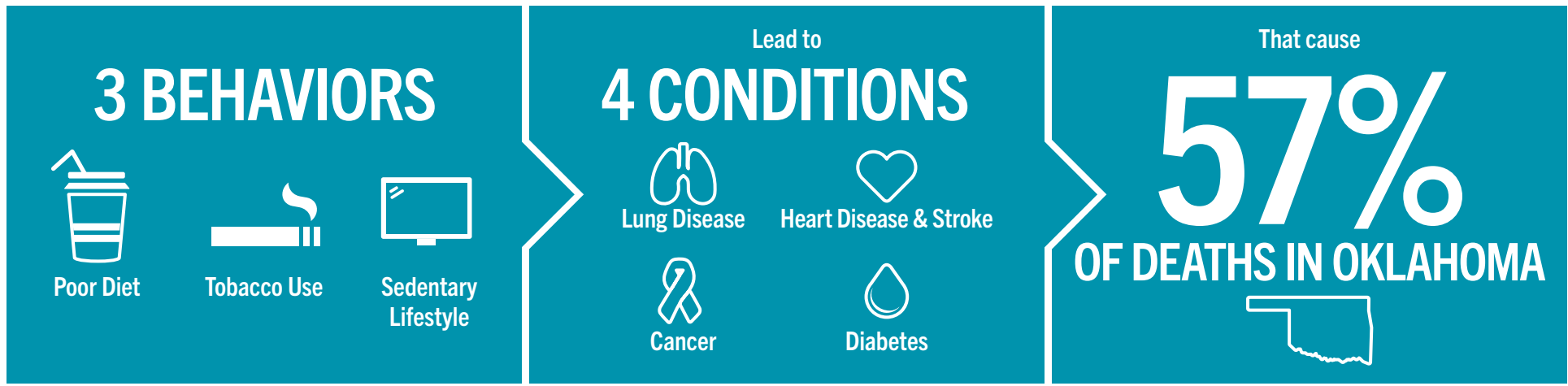
Healthy Communities Incentive Grants

There are no Incentive Grants at this time. Visit OKLAHOMA.GOV/TSET to learn more.



405.521.3888 | Oklahoma.gov/TSET
 Board of Directors Chair Marshall Snipes
 Executive Director Julie Bisbee

TSET'S MISSION: TO REDUCE PREVENTABLE DEATH IN OKLAHOMA.



TSET INVESTS IN:

- Tobacco Cessation
- Physical Activity
- Improving Nutrition
- Medical Access and Research

IN OKLAHOMA:

OBESITY:

\$1.72 BILLION

IN MEDICAL EXPENDITURES EACH YEAR

- 1 IN 6 HIGH SCHOOL STUDENTS IS OBESE
- 1 IN 6 HIGH SCHOOL STUDENTS IS OVERWEIGHT
- 1 IN 3 ADULTS IS OBESE

SMOKING:

\$1.88 BILLION

IN DIRECT HEALTHCARE COSTS EACH YEAR

- 7,500 ADULT DEATHS EACH YEAR
- 1,300 KIDS BECOME DAILY SMOKERS EACH YEAR
- \$150 MILLION IS SPENT BY THE TOBACCO INDUSTRY ANNUALLY TO MARKET TOBACCO IN OKLAHOMA

MOVING THE NEEDLE:

ADULT SMOKING PREVALENCE

2001: 28.6%

2021: 16.9%

SMOKING AMONG KIDS CUT IN HALF

MORE THAN **\$580 MILLION** ADDITIONAL RESEARCH DOLLARS LEVERAGED AFTER TSET'S INVESTMENT

MORE THAN **490,000** PEOPLE SERVED BY THE OKLAHOMA TOBACCO HELPLINE

THROUGH THE HEALTH CARE WORKFORCE TRAINING COMMISSION, **99 PHYSICIANS** HAVE OR ARE CURRENTLY PRACTICING IN RURAL AND UNDERSERVED AREAS OF OKLAHOMA