

SENATE DISTRICT 6

SENATOR David Bullard

COUNTIES Atoka Bryan Coal Johnston Marshall



These TSET grants work with local community partners to help prevent cancer and cardiovascular disease by reducing tobacco use and obesity.

\$343,000 invested in your district FY21-FY22 **\$3,506,250** invested in your district FY16-FY20

Grantees FY21

Atoka County Health Department.....	\$105,000	Marshall County Health Department.....	\$110,000
Bryan County Health Department.....	\$128,000		



These TSET grants are for schools, school districts and local communities to promote wellness through policies and strategies that encourage healthy eating, physical activity and tobacco-free lifestyles.

\$527,500 invested in your district

Healthy Communities Incentive Grants

City of Achille.....	\$20,000	City of Madill.....	\$36,000
City of Caney.....	\$36,000	Town of Coalgate.....	\$20,000
City of Durant.....	\$100,000	Town of Stringtown.....	\$36,000
City of Kingston.....	\$20,000	Town of Tushka.....	\$36,000

Healthy Schools Incentive Grants

Achille Public Schools.....	\$3,000	Madill Public Schools.....	\$25,000
Bennington Elementary School.....	\$3,000	Milburn Public Schools.....	\$3,000
Bennington High School.....	\$2,000	Silo Public Schools.....	\$20,000
Bennington Public Schools.....	\$15,000	Stonewall Public Schools.....	\$15,000
Calera Public Schools.....	\$3,000	Tupelo Public Schools.....	\$3,000
Caney Public Schools.....	\$15,000	Tushka Elementary School.....	\$1,500
Colbert Public Schools.....	\$3,000	Tushka High School.....	\$1,500
Colbert West Ward Elementary.....	\$1,500	Tushka Public Schools.....	\$3,000
Coleman Public School.....	\$15,000	Wapanucka Public Schools.....	\$3,000
Cottonwood Public Schools.....	\$8,000	Rock Creek School District.....	\$20,000
Kingston Public Schools.....	\$25,000	Toshomingo Public School District.....	\$20,000
Lane Public School.....	\$15,000		



TSET Food Systems Impact Grants provide immediate relief to increased need for food during the COVID pandemic and support partnerships that seek to increase the availability of healthy foods.

2020 District Cumulative: **\$408,505**

Grantees

Hunger Free Oklahoma.....	\$408,505
Serving Delaware, Garfield, Jackson, Kay, Kiowa, Marshall, Okfuskee, Seminole and Washington counties	

Oklahoma Tobacco Helpline

1 800

QUIT NOW

1-800-784-8669 OKhelpline.com

A Program of TSET

OKLAHOMANS SERVED:

District FY21:

484

District Cumulative FY11-FY21

8,870

The Oklahoma Tobacco Helpline provides free telephone and web-based coaching sessions, free nicotine patches, gum and lozenges to all Oklahomans each year, 24/7.

State Cumulative FY11-FY21:

330,965

STEPHENSON CANCER CENTER

District Participation 2012-2021:

96*

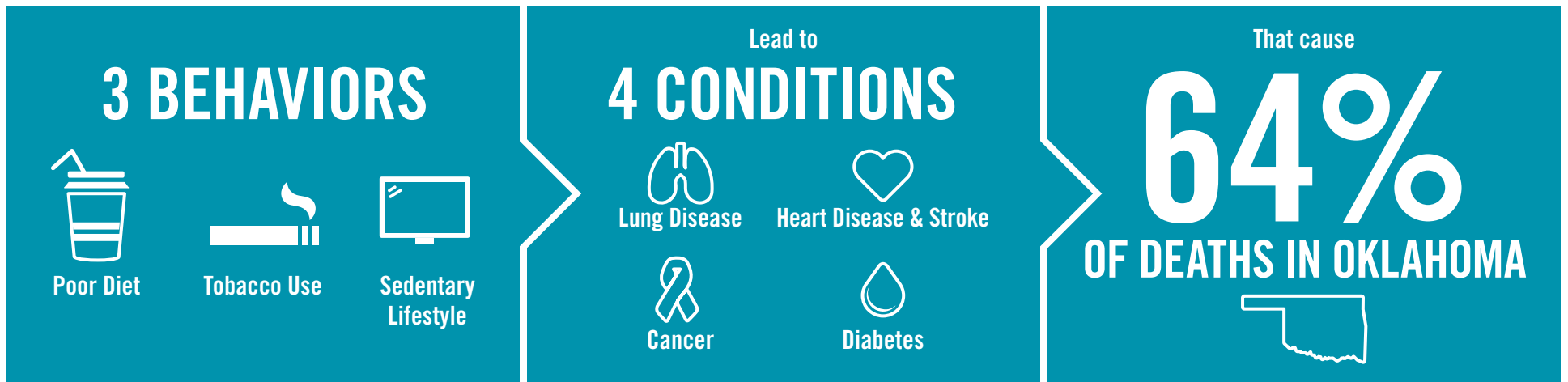
TSET funds cancer treatment and research at the Stephenson Cancer Center in support of TSET's mission to decrease the burden of cancer by promoting, coordinating and supporting innovative cancer research that allows Oklahomans of all ages to receive cutting-edge care without leaving the state.

*Patients that have participated in interventional clinical trials at the Stephenson Cancer Center



405.521.3888 | TSET.OK.GOV
Board of Directors Chair Michelle Stephens
Executive Director Julie Bisbee

TSET'S MISSION: TO REDUCE PREVENTABLE DEATH IN OKLAHOMA.



TSET INVESTS IN:

- Tobacco Cessation
- Physical Activity
- Improving Nutrition
- Medical Access and Research

IN OKLAHOMA:

OBESITY:

\$1.72 BILLION

IN MEDICAL EXPENDITURES EACH YEAR

- 1 IN 6 HIGH SCHOOL STUDENTS IS OBESE
- 1 IN 6 HIGH SCHOOL STUDENTS IS OVERWEIGHT
- 1 IN 3 ADULTS IS OBESE

SMOKING:

\$1.62 BILLION

IN DIRECT HEALTHCARE COSTS EACH YEAR

- 7,500 ADULT DEATHS EACH YEAR
- 1,300 KIDS BECOME DAILY SMOKERS EACH YEAR
- \$138 MILLION IS SPENT BY TOBACCO INDUSTRY ANNUALLY TO MARKET TOBACCO IN OKLAHOMA

MOVING THE NEEDLE:

ADULT SMOKING PREVALENCE

28.6% 2001

19.1% 2020

SMOKING AMONG KIDS CUT IN HALF

MORE THAN **\$500 MILLION** ADDITIONAL RESEARCH DOLLARS LEVERAGED AFTER TSET'S INVESTMENT

MORE THAN **470,000** PEOPLE SERVED BY THE OKLAHOMA TOBACCO HELPLINE

THROUGH THE MEDICAL LOAN REPAYMENT PROGRAM, **90 PHYSICIANS** HAVE OR ARE CURRENTLY PRACTICING IN RURAL AND UNDERSERVED AREAS OF OKLAHOMA