

SENATE DISTRICT 1

SENATOR Micheal Bergstrom

COUNTIES Craig Delaware Mayes Ottawa



These TSET grants work with local community partners to help prevent cancer and cardiovascular disease by reducing tobacco use and obesity.

\$1,244,661 invested in your district FY21-FY22 **\$4,896,242** invested in your district FY16-FY20

Grantees FY21-FY22

Mayes County HOPE Coalition.....	\$414,587	Grand Nation, Inc.	\$398,000
ROCMND Area Youth Services.....	\$432,074	Serving Craig County	
Serving Delaware County			



These TSET grants are for schools, school districts and local communities to promote wellness through policies and strategies that encourage healthy eating, physical activity and tobacco-free lifestyles.

\$349,125 invested in your district

Healthy Communities Incentive Grants

Town of Adair.....	\$36,000	City of Miami.....	\$24,000
City of Jay.....	\$36,000	City of Vinita.....	\$50,000
Town of Ketchum.....	\$36,000		

Healthy Schools Incentive Grants

Afton Public Schools.....	\$22,000	Jay Upper Elementary.....	\$3,000
Bluejacket Public Schools.....	\$15,000	Kenwood Public School.....	\$15,000
Cleora Public Schools.....	\$2,625	Miami Public Schools.....	\$15,500
Grove Public Schools.....	\$30,000	Pryor Public Schools.....	\$15,000
Jay Elementary School.....	\$4,000	Wyandotte School District.....	\$20,000
Jay Public Schools.....	\$25,000		



TSET Food Systems Impact Grants provide immediate relief to increased need for food during the COVID pandemic and support partnerships that seek to increase the availability of healthy foods.

2020 District Cumulative: **\$444,577**

Grantees

Hunger Free Oklahoma.....	\$408,505	Boys and Girls Club.....	\$36,072
Serving Delaware, Garfield, Jackson, Kay, Kiowa, Marshall, Okfuskee, Seminole and Washington counties		Serving Ottawa County	

Oklahoma Tobacco Helpline

1 800 QUIT NOW

1-800-784-8669 **OKhelpline.com**

A Program of TSET

OKLAHOMANS SERVED:

District FY21:

533

District Cumulative FY11-FY21

8,124

The Oklahoma Tobacco Helpline provides free telephone and web-based coaching sessions, free nicotine patches, gum and lozenges to all Oklahomans each year, 24/7.

State Cumulative FY11-FY21:

330,965

STEPHENSON CANCER CENTER

District Participation 2012-2021:

46*

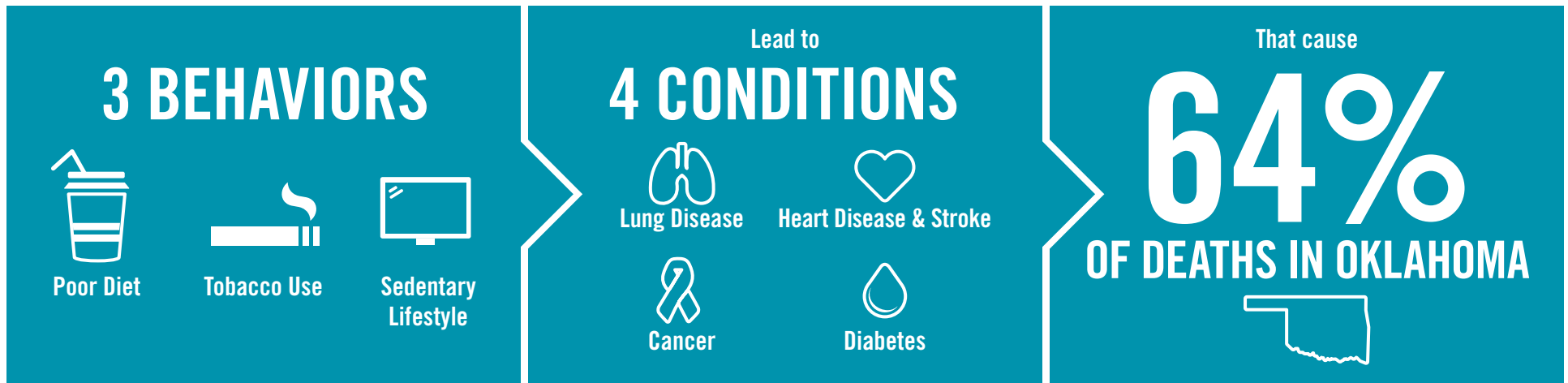
TSET funds cancer treatment and research at the Stephenson Cancer Center in support of TSET's mission to decrease the burden of cancer by promoting, coordinating and supporting innovative cancer research that allows Oklahomans of all ages to receive cutting-edge care without leaving the state.

*Patients that have participated in interventional clinical trials at the Stephenson Cancer Center



405.521.3888 | TSET.OK.GOV
 Board of Directors Chair Michelle Stephens
 Executive Director Julie Bisbee

TSET'S MISSION: TO REDUCE PREVENTABLE DEATH IN OKLAHOMA.



TSET INVESTS IN:

- Tobacco Cessation
- Physical Activity
- Improving Nutrition
- Medical Access and Research

IN OKLAHOMA:

OBESITY:

\$1.72 BILLION

IN MEDICAL EXPENDITURES EACH YEAR

- 1 IN 6 HIGH SCHOOL STUDENTS IS OBESE
- 1 IN 6 HIGH SCHOOL STUDENTS IS OVERWEIGHT
- 1 IN 3 ADULTS IS OBESE

SMOKING:

\$1.62 BILLION

IN DIRECT HEALTHCARE COSTS EACH YEAR

- 7,500 ADULT DEATHS EACH YEAR
- 1,300 KIDS BECOME DAILY SMOKERS EACH YEAR
- \$138 MILLION IS SPENT BY TOBACCO INDUSTRY ANNUALLY TO MARKET TOBACCO IN OKLAHOMA

MOVING THE NEEDLE:

ADULT SMOKING PREVALENCE

28.6% 2001

19.1% 2020

SMOKING AMONG KIDS CUT IN HALF

MORE THAN **\$500 MILLION** ADDITIONAL RESEARCH DOLLARS LEVERAGED AFTER TSET'S INVESTMENT

MORE THAN **470,000** PEOPLE SERVED BY THE OKLAHOMA TOBACCO HELPLINE

THROUGH THE MEDICAL LOAN REPAYMENT PROGRAM, **90 PHYSICIANS** HAVE OR ARE CURRENTLY PRACTICING IN RURAL AND UNDERSERVED AREAS OF OKLAHOMA