

HOUSE DISTRICT 20

REPRESENTATIVE Sherrie Conley

COUNTIES Cleveland Garvin McClain Pottawatomie



These TSET grants work with local community partners to help prevent cancer and cardiovascular disease by reducing tobacco use and obesity.

\$1,619,068 invested in your district FY21-FY22 **\$5,752,226** invested in your district FY16-FY20

Grantees FY21-FY22

Norman Regional Health System <i>Serving Cleveland County</i>	\$466,053	Norman Regional Health System <i>Serving McClain County</i>	\$351,965
McClain-Garvin County Youth & Family Center, Inc. <i>Serving Garvin County</i>	\$361,050	Gateway to Prevention and Recovery <i>Serving Pottawatomie County</i>	\$440,000



These TSET grants are for schools, school districts and local communities to promote wellness through policies and strategies that encourage healthy eating, physical activity and tobacco-free lifestyles.

\$172,000 invested in your district

Healthy Communities Incentive Grants

City of Blanchard	\$50,000	City of Noble	\$50,000
City of Lexington	\$20,000	City of Purcell	\$10,000
City of Newcastle	\$25,000		

Healthy Schools Incentive Grants

Newcastle High School	\$5,000	Washington Public Schools	\$5,000
Newcastle Public Schools	\$7,000		



TSET Food Systems Impact Grants provide immediate relief to increased need for food during the COVID pandemic and support partnerships that seek to increase the availability of healthy foods.

2020 District Cumulative: **\$250,000**

Grantees

Gateway to Prevention and Recovery <i>Serving Pottawatomie, Seminole and Hughes counties</i>	\$250,000
---	------------------

Oklahoma Tobacco Helpline

1 800

QUIT NOW

1-800-784-8669 OKhelpline.com

A Program of TSET

OKLAHOMANS SERVED:

District FY21:

170

District Cumulative FY11-FY21:

2,342

The Oklahoma Tobacco Helpline provides free telephone and web-based coaching sessions, free nicotine patches, gum and lozenges to all Oklahomans each year, 24/7.

State Cumulative FY11-FY21:

330,965

STEPHENSON CANCER CENTER

District Participation 2012-2021:

207*

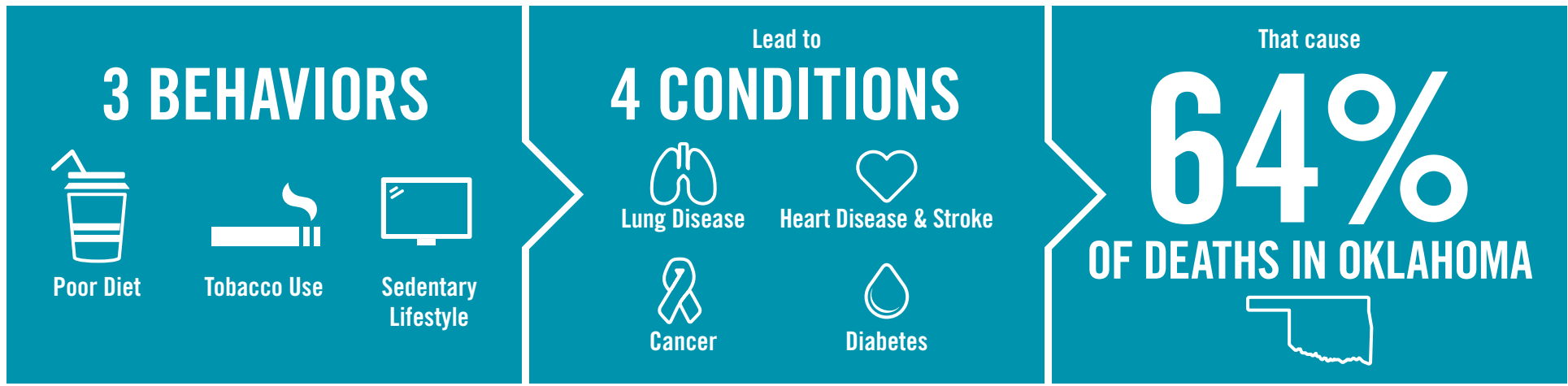
TSET funds cancer treatment and research at the Stephenson Cancer Center in support of TSET's mission to decrease the burden of cancer by promoting, coordinating and supporting innovative cancer research that allows Oklahomans of all ages to receive cutting-edge care without leaving the state.

*Patients that have participated in interventional clinical trials at the Stephenson Cancer Center



405.521.3888 | TSET.OK.GOV
Board of Directors Chair Michelle Stephens
Executive Director Julie Bisbee

TSET'S MISSION: TO REDUCE PREVENTABLE DEATH IN OKLAHOMA.



TSET INVESTS IN:

- Tobacco Cessation
- Physical Activity
- Improving Nutrition
- Medical Access and Research

IN OKLAHOMA:

OBESITY:

\$1.72 BILLION

IN MEDICAL EXPENDITURES EACH YEAR

- 1 IN 6 HIGH SCHOOL STUDENTS IS OBESE
- 1 IN 6 HIGH SCHOOL STUDENTS IS OVERWEIGHT
- 1 IN 3 ADULTS IS OBESE

SMOKING:

\$1.62 BILLION

IN DIRECT HEALTHCARE COSTS EACH YEAR

- 7,500 ADULT DEATHS EACH YEAR
- 1,300 KIDS BECOME DAILY SMOKERS EACH YEAR
- \$138 MILLION IS SPENT BY TOBACCO INDUSTRY ANNUALLY TO MARKET TOBACCO IN OKLAHOMA

MOVING THE NEEDLE:

ADULT SMOKING PREVALENCE

28.6% 2001

19.1% 2020

SMOKING AMONG KIDS CUT IN HALF

MORE THAN **\$500 MILLION** ADDITIONAL RESEARCH DOLLARS LEVERAGED AFTER TSET'S INVESTMENT

MORE THAN **470,000** PEOPLE SERVED BY THE OKLAHOMA TOBACCO HELPLINE

THROUGH THE MEDICAL LOAN REPAYMENT PROGRAM, **90 PHYSICIANS** HAVE OR ARE CURRENTLY PRACTICING IN RURAL AND UNDERSERVED AREAS OF OKLAHOMA