

# BRYAN COUNTY

Oklahoma Tobacco Helpline

**1 800 QUIT NOW**

1-800-784-8669 **OKhelpline.com**

A Program of TSET



The Oklahoma Tobacco Helpline provides free telephone and web-based coaching sessions, free nicotine patches, gum and lozenges to all Oklahomans each year, 24/7.

## OKLAHOMANS SERVED:

County FY21:

**268**

County Cumulative FY03-FY21:

**6,359**

State Cumulative FY03-FY21:

**523,994**

## HEALTH INDICATORS

2020 OKLAHOMA STATE DEPARTMENT OF HEALTH

**HEART DISEASE DEATHS**  
(Rate per 100,000)

**CANCER DEATHS**  
(Rate per 100,000)

**ADULT SMOKING RATE**  
(%)

**OBESITY RATE**  
(%)

**PREVALENCE OF DIABETES**  
(%)

COUNTY	HEART DISEASE DEATHS	CANCER DEATHS	ADULT SMOKING RATE	OBESITY RATE	PREVALENCE OF DIABETES
<b>BRYAN COUNTY</b>	<b>239.4</b>	<b>156.4</b>	<b>19.0%</b>	<b>33.4%</b>	<b>11.0%</b>
OKLAHOMA	244.1	171.1	19.1%	36.4%	13.0%
U.S.	168.2	144.1	15.5%	31.9%	10.6%



These TSET grants work with local community partners to help prevent cancer and cardiovascular disease by reducing tobacco use and obesity.

**\$128,000** invested in your community FY21-FY22

**\$1,413,050** invested in your community FY16-FY20

### Grantees FY21-FY22

Bryan County Health Department ..... **\$128,000**



These TSET grants are for schools, school districts and local communities to promote wellness through policies and strategies that encourage healthy eating, physical activity and tobacco-free lifestyles.

**\$190,500** invested in your community

### Healthy Communities Incentive Grants

City of Achille ..... **\$20,000** City of Durant ..... **\$100,000**

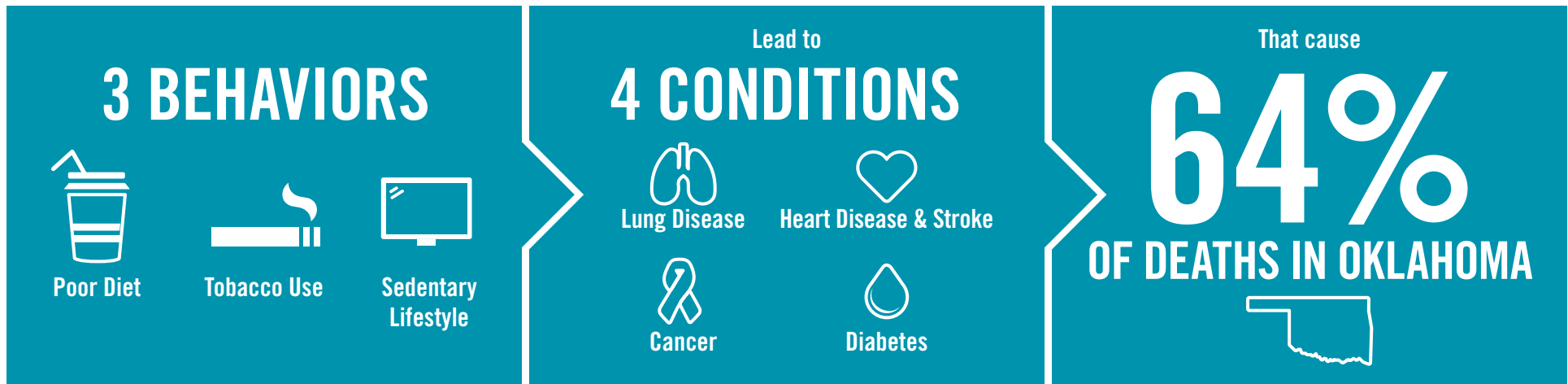
### Healthy Schools Incentive Grants

Achille Public Schools .....	<b>\$3,000</b>	Colbert Public Schools .....	<b>\$3,000</b>
Bennington Elementary School .....	<b>\$3,000</b>	Rock Creek Schools .....	<b>\$20,000</b>
Bennington High School .....	<b>\$2,000</b>	Silo Public School .....	<b>\$20,000</b>
Bennington Public Schools .....	<b>\$15,000</b>	West Ward Elementary School .....	<b>\$1,500</b>
Calera Public Schools .....	<b>\$3,000</b>		



405.521.3888 | TSET.OK.GOV  
Board of Directors Chair Michelle Stephens  
Executive Director Julie Bisbee

# TSET'S MISSION: TO REDUCE PREVENTABLE DEATH IN OKLAHOMA.



**TSET INVESTS IN:**

- Tobacco Cessation
- Physical Activity
- Improving Nutrition
- Medical Access and Research

## IN OKLAHOMA:

**OBESITY:**

**\$1.72 BILLION**

IN MEDICAL EXPENDITURES EACH YEAR

- 1 IN 6 HIGH SCHOOL STUDENTS IS OBESE
- 1 IN 6 HIGH SCHOOL STUDENTS IS OVERWEIGHT
- 1 IN 3 ADULTS IS OBESE

**SMOKING:**

**\$1.62 BILLION**

IN DIRECT HEALTHCARE COSTS EACH YEAR

- 7,500 ADULT DEATHS EACH YEAR
- 1,300 KIDS BECOME DAILY SMOKERS EACH YEAR
- \$138 MILLION IS SPENT BY TOBACCO INDUSTRY ANNUALLY TO MARKET TOBACCO IN OKLAHOMA

## MOVING THE NEEDLE:

**ADULT SMOKING PREVALENCE**

28.6% 2001

19.1% 2020

**SMOKING AMONG KIDS CUT IN HALF**

MORE THAN **\$500 MILLION** ADDITIONAL RESEARCH DOLLARS LEVERAGED AFTER TSET'S INVESTMENT

MORE THAN **470,000** PEOPLE SERVED BY THE OKLAHOMA TOBACCO HELPLINE

THROUGH THE MEDICAL LOAN REPAYMENT PROGRAM, **90 PHYSICIANS** HAVE OR ARE CURRENTLY PRACTICING IN RURAL AND UNDERSERVED AREAS OF OKLAHOMA