

Jean Neustadt

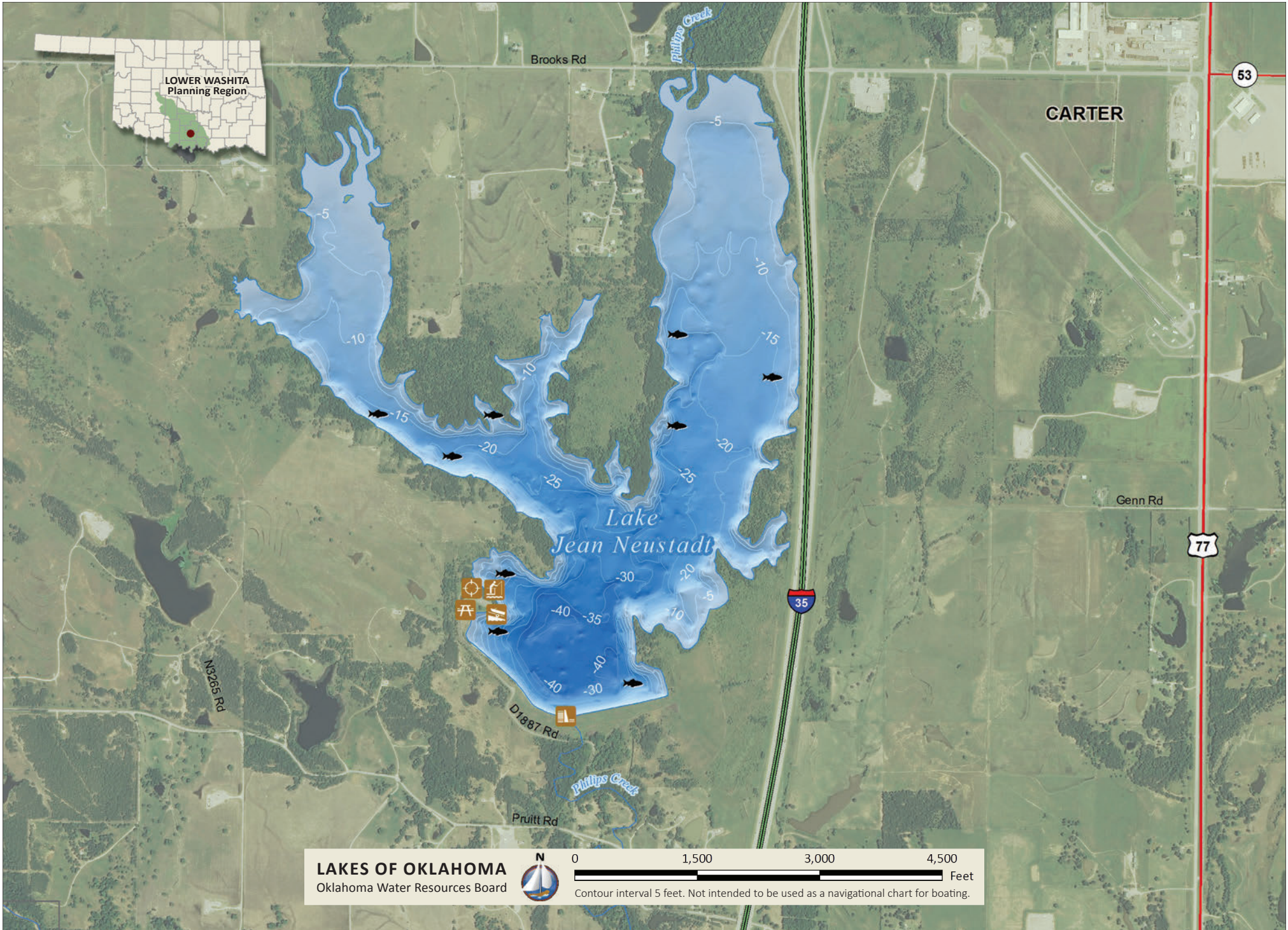
CITY OF ARDMORE



34.28575°N 97.17262°W
Normal Elevation: 809 ft

Area: 459 ac
Shoreline: 11.6 mi

Capacity: 6,399 ac-ft
Maximum Depth: 44.5 ft



LAKES OF OKLAHOMA
Oklahoma Water Resources Board



0 1,500 3,000 4,500 Feet
Contour interval 5 feet. Not intended to be used as a navigational chart for boating.