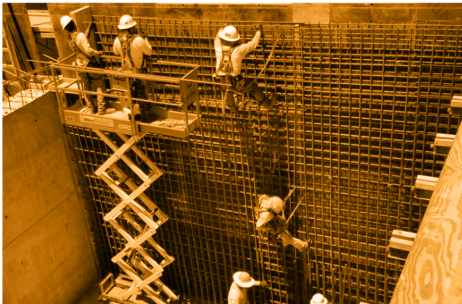


DRAFT



Clean Water State Revolving Fund

Intended Use Plan
State Fiscal Year 2025



OKLAHOMA
Water Resources Board

TABLE OF CONTENTS

Financial Assistance Division	4
Letter From the Chief	5
Executive Summary.....	6
Bipartisan Infrastructure Law (BIL).....	7
Oklahoma’s CWSRF Program.....	9
Entering the CWSRF Program	9
Seven Steps of the CWSRF Program	10
Long-Term Program Goals	17
Short-Term Program Goals	17
Programmatic Requirements	17
Green Project Reserve	17
Affordability Criteria §603(i).....	18
Additional Subsidization	18
Davis Bacon Act §602(b)(6).....	20
American Iron and Steel §608	20
Fiscal Sustainability Plans §603(d)(1)(E)	20
Assurances, Certification, and Specific Requirements for Base Program	21
OWRB’s Financial Management.....	22
CWSRF Financing Plan	22
Transfer Authority Between Clean Water and Drinking Water SRFs	23
Cross-Collateralization of the CWSRF and DWSRF Revenue Bond Structure.....	24
Investment Authority Between Clean Water and Drinking Water.....	24
Administrative Cost of the Clean Water SRF §603(d)(7)	25
Fees §602(b)(12).....	25
SFY 2025 Proposed Projects	25
Bypass Provision	26
Sources and Commitment of Funds During SFY 2025	28
Public Review and Future IUP Amendments.....	29

LIST OF TABLES

Table 1: Approved Loans & Grants By Type	6
Table 2: Summary Grant Conditions.....	8
Table 3: Loan Application Fee.....	14
Table 4: SFY 2024 Unrestricted Sources by Administrative Fund	25
Table 5: Banked Administrative Funds.....	27
Table 6: SFY 2025 Unrestricted Fund Sources by State Fiscal Quarter	28
Table 7: Historical Funding Sources as of June 8, 2023	30

LIST OF APPENDICES

List of Acronyms	32
Appendix A: Oklahoma’s CWSRF SFY 2025 Fundable PPL.....	34

Financial Assistance Division

The OWRB Financial Assistance Division assists communities in their efforts to protect and conserve Oklahoma’s water resources for current and future generations through cost-effective financial products, technical assistance, and high-quality customer service.



Joe Freeman
Financial Assistance Division
Chief



Lori Johnson
Financial Assistance Division
Assistant Chief



Standing left to right:

Daniel Anthamatten, Matt Cortez, Andy Allen, Kretchen Olmeda, Zach Bradley, Lori Johnson, Joe Freeman, Kelly Jasper, Jen Cullins, Tim Davis, Jordan Johnson, Deann Langston, Paula Mills, Nathan Clark

Seated left to right:

Charles de Coune, Kate Burum, Laura Oak, Lindy Clay, Alpha Thapa, Tonya White

Not pictured:

Donna Bitsche, Jerri Hargis



OKLAHOMA

Water Resources Board



LETTER FROM THE CHIEF

The Financial Assistance Division of the Oklahoma Water Resources Board (OWRB) is dedicated to assisting communities and rural districts in maintaining adequate water and wastewater facilities. Since 1983, we have provided approximately 65% of all the financing for Oklahoma's water and wastewater infrastructure needs. To date, we have funded over \$6.2 billion in projects with our loan and grant programs which in turn led to savings of over \$1.5 billion for Oklahoma communities and rural districts.

Recent federal and state legislation has made historical investments in water infrastructure. In 2021, President Biden signed the Bipartisan Infrastructure Law (BIL) which included \$50 billion to strengthen the nation's drinking water and wastewater systems. Under BIL funding, Oklahoma is estimated to receive over \$500 million through both the CWSRF and DWSRF programs over an accumulative 5-year period beginning state fiscal year (SFY) 2023 through SFY2027. The CWSRF program requires the development of an Affordability Criteria to assist in community ranking across Oklahoma based on income data, employment data, and population trends collected from national and state census sources. This Affordability Criteria determination allows OWRB to identify, initiate funding outreach, and provide tools and resources to systems designated as disadvantaged and possessing a significant infrastructure need. Additionally, through Oklahoma Senate Bills 429, 4, and 13, and House Bill 2942, \$464,790,709 of Coronavirus State and Local Fiscal Recovery Funds, part of the American Rescue Plan Act (ARPA), was appropriated to OWRB to administer for water, sewer, stormwater, dam rehabilitation and water efficient irrigation projects across the state. It is estimated that these projects will benefit over 2.5 million Oklahomans and provide thousands of job opportunities.

These investments are a testimony to the success of the SRF programs and OWRB's financial assistance programs. The OWRB stands ready to administer the supplemental funding to improve the state's water infrastructure by providing low interest loans, loan forgiveness and grants to eligible entities with a focus on serving disadvantaged communities.

With the current attention on water and sewer infrastructure money, the state is well positioned for the 2025 update of the Oklahoma Comprehensive Water Plan (OCWP). While the current report is over a decade old, it documented a tremendous need through the year 2060 for water and wastewater investments in Oklahoma. Updates over the next couple years will require active input from of all of us in the industry and we are pleased to play such a significant role in helping to identify need and finance solutions for efficient water use across Oklahoma.

Sincerely,

Joe Freeman, Chief

EXECUTIVE SUMMARY

The Clean Water State Revolving Fund (CWSRF) loan program was established under amendments to the 1987 Federal Water Pollution Control Act (FWPCA) a.k.a., the Clean Water Act (CWA) to provide a renewable financing source for statewide wastewater infrastructure and polluted runoff control needs while protecting the State’s surface and groundwaters.

Launched by \$14.5 million in State appropriated seed monies and \$816.7 million in subsequent state match notes and revenue bonds, the program has capitalized over \$450.81 million in federal grant funds to commit over \$2.6 billion in low-interest construction and refinancing loans since 1990. Table 1 provides a summary of all the programs provided by OWRB and the total savings that have been provided to communities since 1986.



TABLE 1: APPROVED LOANS & GRANTS BY TYPE

Type of Funding	Number	Amount
Financial Assistance Loan	441	1,922,220,000.00
Clean Water State Revolving Fund Loan	474	2,625,951,009.98
Drinking Water State Revolving Fund Loan	345	2,262,440,160.62
ARPA Grant	132	411,560,132.84
OSG Grant	8	1,958,426.00
Emergency Grant	607	36,273,219.04
REAP Grant	754	67,411,852.10
Emergency Drought Relief Grant	4	1,125,000.00
Drought Grant	6	418,848.00
Water for 2060 Grant	4	1,500,000.00
Total Amount Approved	2,775	7,330,858,648.58
Total Estimated Savings		1,739,336,280.44

The CWSRF owes its success largely to its “revolving” aspect, as loan repayments and investment earnings are continually recycled to fund new projects; ongoing commitments of federal funds; financing strategy, which provides loans at, approximately 40% below market interest rate; and ease of today’s loan application and approval process.

With the passage of the Bipartisan Infrastructure Law (BIL), OWRB’s CWSRF program manages three grants from EPA where funds are used for eligible projects in the CWSRF. These capitalization grants include the CWSRF Base grant, the CWSRF BIL General Supplemental grant, and the CWSRF BIL Emerging Contaminants grant. Each of these has specific programmatic conditions that the OWRB must meet. Table 2 shows the Federal Fiscal Year (FFY) 2024 allotment and specific conditions for each grant.

During State Fiscal Year (SFY) 2025, the OWRB will continue offering financing at approximately 40% below market rate. A 30-year maximum term loan is available to applicants whose projects have a useful life at least equal to the requested term.

In addition to providing substantial savings to communities across the state, the loans committed through the CWSRF contribute to protecting human health, water quality, and economic viability of Oklahoma’s communities.

To further maintain the health of the State’s waters, the program may also fund structural and non-structural nonpoint source (NPS) projects that reduce polluted runoff from urban and agricultural land. Such projects may include the following:

- Urban stormwater control;

- Agricultural best management practices (BMPs) implementation;
- Conservation easements for source water protection;
- Stream bank erosion control;
- Wetlands in place to polish effluent;
- Green infrastructure;
- Innovative green projects;
- Total/integrated water resources management planning and resulting structural projects;
- Abandoned industrial site assessment and clean-up; and
- Decentralized wastewater needs.

To date, for SFY 2025 the OWRB has received requests for 222 projects totaling \$453,055,382.21 (Appendix A). The active Project Priority List (PPL) can be found at owrb.ok.gov/cwsrf.

As a condition of a federal agreement with the Environmental Protection Agency (EPA), the OWRB, as administrator of the CWSRF, must submit an annual plan for the use of federal funds awarded and a strategy for managing the program in accordance with the CWA Section 606(c). The following document is the State of Oklahoma’s CWSRF Intended Use Plan (IUP). The OWRB will apply for all available Capitalization Grants for funds to be made available during SFY 2025.

Loans provided by the CWSRF program are used for the construction of wastewater infrastructure improvements, green infrastructure projects, water efficiency projects, NPS projects, stormwater activities, subsurface remediation, planning and design, refinancing of eligible existing debt, and many other projects.

BIPARTISAN INFRASTRUCTURE LAW (BIL)

THE BIPARTISAN INFRASTRUCTURE LAW
A Historic Investment in Water for Oklahoma

The Bipartisan Infrastructure Law (BIL) will provide more than \$506 million to Oklahoma from the U.S. EPA for water and wastewater infrastructure investment from SFY2023 through SFY2027

APPRX \$97 MILLION FOR CLEAN WATER

\$89.9 million through the Clean Water State Revolving Fund (CWSRF) for wastewater, storm water, and nonpoint source infrastructure projects

CW\$RF
OKLAHOMA

\$7.6 million through the CWSRF for emerging contaminants

With BIL funding, Oklahoma's public systems will have a significant opportunity to strengthen & rebuild our State's water & wastewater infrastructure

OKLAHOMA Water Resources Board

This funding provides a historic investment to replace water & wastewater facilities, and ensure that Oklahoma's systems are resilient for the future

On November 15, 2021, President Biden signed the Infrastructure Investment and Jobs Act into law known as the Bipartisan Infrastructure Law (BIL). The BIL included an appropriation to the Environmental Protection Agency (EPA) for more than \$50 Billion to strengthen the nation’s drinking water and wastewater systems. A significant portion will flow through the Clean Water and Drinking Water State Revolving Funds (SRFs) to address urgent water challenges facing communities.

The BIL provides two federal grants to states through the CWSRF: General Supplemental Grant and Emerging Contaminants Grant. These grants will provide funding over a five-year period. Current requests to the PPL (Appendix A) show enough demand to apply and utilize both the supplemental grants and emerging contaminant for SFY 2025.

Emerging Contaminants

The BIL emerging contaminants funds must be used for eligible CWSRF projects where the main goal is to address contaminants that do not have a water quality criterion established by EPA, except for Per- and Polyfluorinated Substances (PFAS). Emerging contaminants refer to substances and microorganisms, including manufactured or naturally occurring physical, chemical, biological, radiological or nuclear materials, which are known or anticipated in the environment, which may pose newly identified or re-emerging risks to human health, aquatic life, or the environment. Categories can include PFAS and other persistent organic pollutants (POPs), Biological contaminants and microorganisms, some compounds of pharmaceuticals and personal care products (PPCPs), Nanomaterials, and Microplastics/Nanoplastics.

OWRB will be submitting applications for 3 Emerging Contaminant grants for SFY 2025. In addition to the FFY 2024 grant, there is funding leftover from the FFY 2023 allotment and funds re-allotted from FFY 2022. OWRB received requests for the full amount available this year. Table 2 summarizes the grants available for OWRB to apply for.

TABLE 2: SUMMARY GRANT CONDITIONS

Appropriation	Allotments	State Match	Green Project Reserve	Additional Subsidization
FFY 2024 CWSRF Capitalization Grant	\$6,595,000	20%	10%	20%-40%
FFY 2024 CWSRF General Supplemental	\$18,373,000	20%	10%	49%
FFY 2024 CWSRF Emerging Contaminants	\$1,718,000	No Match	10%	100%
FFY 2023 Emerging Contaminants	\$518,000	No Match	10%	100%
FFY 2022 Reallotment Emerging Contaminants	\$16,000	No Match	10%	100%

Technical Assistance

The BIL also authorizes the CWSRF to now take up to 2% of the CWSRF grants to provide technical assistance to potential borrowers. Currently OWRB provides a technical assistance contract with the Oklahoma Rural Water Association (ORWA) paid for out of the administrative fund. OWRB reserves the authority to utilize the 2% if necessary.

Build America, Buy America (BABA) Act

On November 15, 2021, Infrastructure Investment and Jobs Act (IIJA), Pub. L. No. 117-58, which includes the Build America, Buy America Act (BABA). Pub. L. No. 117-58, §§ 70901-52, was signed into law strengthening Made in America Laws and will bolster America’s industrial base, protect national security, and support high-paying jobs. The law requires that no later than May 14, 2022, 180 days after the enactment of the IIJA, the head of each covered Federal agency shall ensure that “none of the funds made available for a Federal financial assistance program for infrastructure, including each deficient program, may be obligated for a project unless all of the iron, steel, manufactured products, and construction materials used in the project are produced in the United States.” This expands domestic sourcing requirements to include all steel, iron, manufactured products, non-ferrous metals, plastic, and polymer-based products (including polyvinylchloride, composite building materials, and polymers used in fiber optic cables), glass (including optic glass), lumber, and drywall used in infrastructure

projects for federal financial assistance programs must be produced in the United States. The Made in America Office at the Office of Management and Budget (OMB) has released final overarching [implementation guidance](#).

BABA is an equivalency requirement and might not apply to all projects. To see more on equivalency, go to page 22 for more details.

BIL Guidance

EPA published a SRF BIL Implementation Memo on March 8, 2022. The memo can be found on EPA’s website at https://www.epa.gov/system/files/documents/2022-03/combined_srf-implementation-memo_final_03.2022.pdf. This contains the following provisions that pertain to the OWRB CWSRF program. Based upon the memo, the match for the BIL supplemental will be a 10% state match the first two years and then 20% the last three years. Signage requirements for BIL were updated in a memo from May 11, 2023. For equivalency projects or projects that receive loan forgiveness made available by BIL, these requirements include:

- Red, white, or blue lettering;
- White, gray or blue backgrounds or white background with red border;
- Investing in America emblem;
- President Joe Biden’s Bipartisan Infrastructure Law ;
- EPA logo;
- State logo;
- County/city logo;
- Procuring signs; and
- Public or media events.

OKLAHOMA’S CWSRF PROGRAM

ENTERING THE CWSRF PROGRAM

To enter the program:

- The borrower must be a qualifying entity under state statutes and federal requirements.
- Project must fit within the guidelines of CWA eligibilities for CWSRF and be eligible for funding under state statutes.

QUALIFYING BORROWERS

Legally qualified borrowers are identified through review by OWRB staff. The potential loan recipient must, according to 82 Oklahoma Statutes (OS) 1085.52, consist of a city, town, county, or the State of Oklahoma, as well as any rural district, public trust, master conservancy district, any other political subdivision or combination thereof. Furthermore, the potential loan recipient’s Unique Entity ID (UEI) in the System for Award Management (SAM) must be active with no active exclusion and no delinquent federal debt. OWRB verifies this information prior to making a loan at sam.gov/content/home.

ELIGIBLE PROJECTS FOR FUNDING §603 (C)

The CWSRF may finance up to 100% of project costs for items eligible under program requirements, defined in OWRB rules (OAC 785:50-9-21(a)), including, but not limited to, engineering, planning and design, financial advisors, loan closing costs, construction, land acquisition, pollution run-off controls through BMPs, and construction projects built in accordance with CWSRF requirements. The CWSRF may also refinance existing debt upon verification by the OWRB that the debt being refinanced pertained solely to the completion of a project that met the same OWRB requirements.

STEPS OF THE CWSRF PROCESS



The CWA and OWRB rules now include the following additional and/or refined programmatic eligibilities:

- Construction of publicly owned treatment works (POTW); as defined by FWPCA Section 212(2)(A)(B), which now includes land necessary for construction;
- Implementation of an NPS management program;
- Development and implementation of a conservation and management plan under CWA Section 320, the National Estuary Program (NEP);
- Construction, repair, or replacement of decentralized wastewater systems that treat municipal wastewater;
- Measures to manage, reduce, treat, or recapture stormwater or subsurface drainage water;
- Measures to reduce the demand for POTW capacity through water conservation, efficiency or reuse;
- Development and implementation of watershed projects consistent with Section 122 of the CWA. Eligible projects include watershed management of wet weather discharges, stormwater BMPs, watershed partnerships, integrated water resource planning, municipality-wide stormwater management planning or increased resilience of treatment works;
- Measures to reduce the energy consumption needs for POTW;
- Reusing or recycling wastewater, stormwater, or subsurface drainage water;
- Measures to increase the security of POTW;
- Planning and Design that will reasonably result in an eligible capital project.

SEVEN STEPS OF THE CWSRF PROGRAM

I. PROGRAMMATIC APPLICATION PROCESS

The purpose of the Programmatic Application is two-fold – determining if the borrower qualifies to receive funding under the CWSRF program and assessing the eligibility of the proposed project. To apply for a CWSRF loan, applicants submit their programmatic application on-line at <https://survey123.arcgis.com/share/5599f3416e1e47c5ab559e06426d2a01>. This on-line process allows for better tracking of communities' needs and easier processing by staff. Each year the OWRB sends an electronic call for projects to stakeholders, financial, legal, and engineering service providers in order to identify eligible CWSRF projects. The OWRB held a webinar in February discussing priorities of the OWRB and EPA as well as the Programmatic Application Process. The SFY 2025 Programmatic Application notice went out on February 5, 2024, via a GovDelivery email notification.

Projects currently on the SFY 2024 PPL that will not be approved for funding within SFY 2024 are encouraged to request to remain on the SFY 2025 PPL. The applicant may simply notify the OWRB and update any new project information that may affect its ranking.

The OWRB reviews the submitted Programmatic Application based on CWSRF eligibility requirements. If the proposal is determined eligible, it will be ranked via the CWSRF Integrated Rating System and placed accordingly on the PPL.

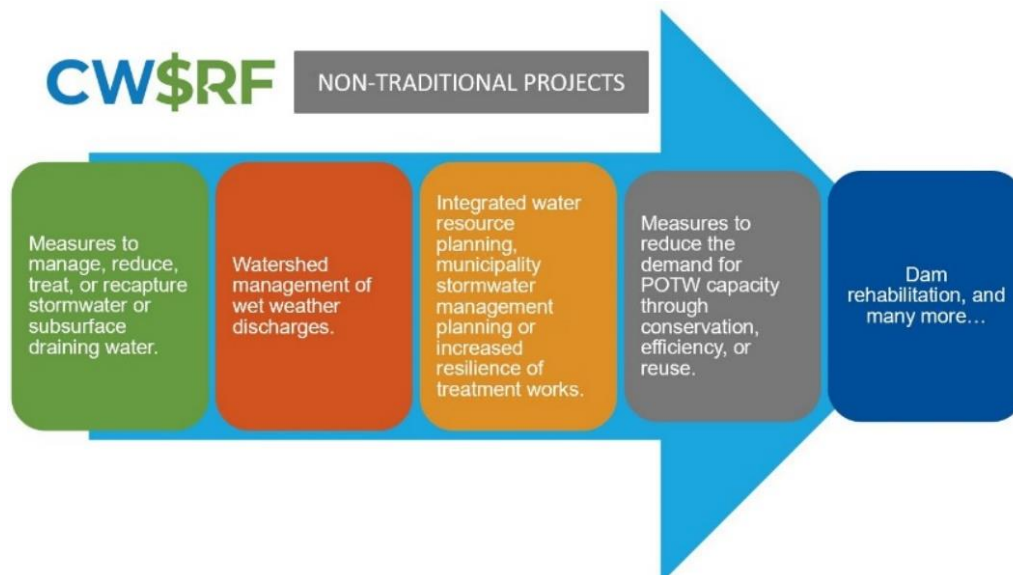
INTEGRATED PRIORITY RATING SYSTEM

The OWRB utilizes Oklahoma’s approved CWSRF Integrated Rating System for all eligible projects. This rating combines several key areas of importance: project type, water quality restoration, water quality protection, points for current programmatic initiatives, and the most heavily weighted factor, a project’s readiness to proceed. This rating is completed on a form entitled “SFY 2025 Integrated Priority Rating System for Distribution of Funds” found on page 11. The Rating System is set forth in OAC 785:50-9-23. Proposed projects receive points in five key areas as follows:

1. “Project Type Factor” (max. 70 points.): Projects that eliminate or reduce pollution, sustain compliance, increase capacity, reliability or efficiency, reuse wastewater, or other such improvements receive points that vary by project and/or waterbody.
2. “Water Quality Restoration Factor” (max. 20 points.): Projects located on waterbodies not meeting assigned beneficial uses. Points vary by waterbody impairment.
3. “Water Quality Protection Factor” (max. 10 points.): Projects for maintenance of beneficial uses located on specially protected waterbodies.
4. “Programmatic Priority Factor” (max. 100 points.): Additional points will be awarded to Applicants that meet the OWRB’s Affordability Criteria definition.
5. “Readiness to Proceed Factor” (max. 400 points.): Considers the number of steps completed in the CWSRF process to begin a loan commitment with the OWRB. Project “readiness” includes request for funding, preliminary planning documents, loan application, and approved plans and specifications. Points increase respectively.

Most of the information which compiles the priority rating system, is spatially referenced and available via Geographic Information System (GIS) technology. The various water quality and environmental data layers used are available from the OWRB, Oklahoma Department of Environmental Quality (ODEQ), and other state and federal agencies.

Per OAC 785:50-9-23(f)(1), a tie breaking procedure shall be utilized when two or more projects have equal points under the Integrated Rating System and are in competition for funds. The project(s) with the larger existing population will receive a higher rating.



SFY 2025 INTEGRATED PRIORITY RATING SYSTEM FOR DISTRIBUTION OF FUNDS

Applicant:
 CWSRF Loan No.:
 Amount Requested:
 Project Description:

Initial Request Received:
 Reranked:
 Population:
 County:
 Congressional District:

Criteria	Points Available	Total Points Maximum points:
1. Project Type Factor:		70
Treatment works or water quality projects designed to effectively eliminate or reduce a <u>documented</u> source of human health threat and/or discharge permit limit violation <u>within a watershed of a waterbody being utilized as a water supply</u> .	70	
Treatment works or water quality projects designed to effectively eliminate or reduce a <u>documented</u> source of human health threat and/or discharge permit limit violation.	60	
Treatment works or water quality projects designed to sustain compliance with or provide a degree of treatment beyond permit limits; increase capacity, reliability, or efficiency; reclaim/reuse wastewater; reduce a <u>documented</u> water quality threat or otherwise maintain beneficial uses. Examples: correct subsurface discharge (I/I); regionalize treatment and collection; eliminate untreated/uncontrolled runoff; restore critical habitat or resources; groundwater recharge; etc.	30	
All other eligible treatment works or pollution control projects. Examples: projects to eliminate or prevent undocumented runoff, provide demonstration/pilot/or education projects, etc.	20	
2. Water Quality Restoration Factor – Restorative measures on waterbodies not meeting "beneficial uses"		Maximum points: 20
Project is located in a watershed listed as a NPS Priority Watershed in Oklahoma's Nonpoint Source Management Program Plan	10	
Project is listed on Oklahoma's 303(d) list of threatened or impaired stream segments	5	
3. Water Quality Protection Factor – Preventative measures against water quality degradation of waterbodies meeting beneficial uses and "high quality" water bodies		Maximum points: 10
Surface and Ground Water Protection Factor (Water Quality Standards Beneficial Use Maintenance/ Antidegradation Policy):		
Project is located within a watershed of a stream segment or in a groundwater basin underlying a stream segment (known "special source" groundwater): 1) listed in OWQS Appendix A. as an Outstanding Resources Water, High Quality Water, Sensitive Water Supply, Scenic River, Culturally Significant Water or Nutrient Limited Watershed; 2) listed in OWQS Appendix--"Areas with Waters of Recreational and/or Ecological Significance;" or 3) is located in a delineated "source water protection area." OR: Project is located in an area overlying a groundwater classified in OWQS with a "vulnerability" level of: Very High, High, Moderate or Nutrient vulnerable (OAC 785-45-7-3-(b)(2)(c) and (d)).	10	
4. Programmatic Priority Factor		Maximum points: 100
Affordability Criteria scoring based on tiering structure.		
Tier 1 - 100	100	
Tier 2 – 80	80	
Tier 3 – 60	60	
Tier 4 - 0	0	
5. Readiness to Proceed Criteria		Maximum points: 400
A completed loan application has been <u>submitted</u> and Oklahoma Department of Environmental Quality or Oklahoma Conservation Commission has approved the project, including the appropriate technical plans and specifications necessary to implement the project.	400	
A completed loan application has been <u>submitted</u> and preliminary planning documents have been <u>submitted</u> to ODEQ or OCC and OWRB or project is for planning and design.	300	
Preliminary planning documents have been submitted to ODEQ or OCC and OWRB.	200	
A request to be considered for funding within the 5-year planning period has been <u>submitted</u> to the OWRB.	100	
Total		

SFY 2025-2029 CWSRF PROJECT PRIORITY LIST

The PPL includes the following items:

- List Rank;
- Population;
- Affordability Criteria Tier;
- Name of the Potential Borrower;
- Project Description;
- Type of Assistance;
- National Pollutant Discharge Elimination System applicable);
- Project Loan Number;
- Projected Assistance Amount;
- GPR Type (as applicable); and
- GPR Amount (as applicable).



SFY 2025
222 Requests
Totaling
\$453,055,382.21

Requests to be placed on the PPL are accepted on a rolling basis and the list is continually updated. Requests for projects to be included in the IUP were due on March 15, 2024. These requests included priority for loan forgiveness during the first quarter of the SFY. Any requests received after the initial deadline will be ranked and added after the beginning of the SFY. Changes such as loan award dates, estimated construction assistance amounts, project descriptions, rank, and addition of new projects may occur as necessary during the fiscal year. Changes to the PPL occur in live time. Any update that includes the addition of projects will be included on the live PPL available on our website at least 2 weeks prior to consideration by the Board for approval and an email sent to stakeholders for public review. The active PPL is available online at owrb.ok.gov/cwsrf. Changes to the PPL throughout the year are tracked and reported in the annual report.

II. FINANCIAL APPLICATION PROCESS

The financial application includes the submittal of all required financial information to determine the financial capability of a prospective borrower. OWRB loan analysts review audits, financial statements, entity history, and trends to see if the borrower is financially able to qualify for a loan. OWRB financial staff performs an analysis of each entity's loan application to ensure adequate credit risk. Financial applications are accepted on a rolling basis and reviewed based entities timeline and completion of requirements. Applications are presented to the Board on a monthly basis for approval.

A borrower must meet a minimum debt coverage ratio (DCR) requirement of 1.25 times. If an entity does not meet this requirement, its representatives are notified and requested to increase revenues, such as by adjusting fees and rates, pledging additional collateral, or decreasing expenses. To ensure the perpetuity of the CWSRF, a loan that is not expected to be fully forgiven will not be recommended for approval until the entity meets the OWRB's DCR requirement. The DCR requirement does not apply to loans expected to be fully forgiven.

\$100 FEE	• Loan request for \$249,999 or less
\$250 FEE	• Loan request for \$250,000 - \$999,999
\$500 FEE	• Loan request for \$1,000,000 or more

If an entity is unable to meet the OWRB’s CWSRF financial requirements through the traditional avenues, OWRB staff will work with its representatives to seek other methods to assist the entity in meeting its infrastructure financing needs. The entity may also be invited to a Funding Agency Coordinating Team (FACT) meeting attended by multiple potential governmental infrastructure funding groups in Oklahoma. Information regarding FACT can be found at

owrb.ok.gov/fact.

LOAN APPLICATION FEE

A loan application fee is collected from the potential borrower at the time of application submittal. The fee ranges from \$100 to \$500 depending upon the size of the loan and is used to partially cover the program’s administrative costs (table 3).

III. ENGINEERING REVIEW §602(B)

Projects that are considered for CWSRF funding undergo programmatic and technical review of planning and design documents such as technical memos, engineering reports (ER), and plans and specifications to ensure they are in compliance with state and federal regulations. These documents outline alternatives to the proposed solution and sustainability of the project.

COST AND EFFECTIVENESS ANALYSIS §602(B)(13)

As part of the technical review of a project, the cost and effectiveness are evaluated. The certification of cost and effectiveness, acknowledged by the Owner’s authorized representative and the engineer, are reviewed as a part of the technical review of the project, if any other justifiable method of evaluation has not been considered.

IV. ENVIRONMENTAL REVIEW §602(B)(6)

An environmental review by the OWRB is required according to Federal Law and the State Environmental Review Process (OAC 785:50-9-60 through 62) for all CWSRF treatment works projects. OWRB environmental staff review each project for impacts to various

environmental “crosscutters” such as historic properties, endangered species, etc. For projects staff is unable to clearly determine no impacts to the crosscutters, staff sends out a letter to the various agencies with oversight such as the State Historic Preservation Office, Oklahoma Archeological Survey, ODEQ, U.S. Fish and Wildlife Service, and U.S. Army Corps of Engineers. The letter solicits crosscutter comments or concerns specific to their area of expertise. If the project type is eligible and is determined to have no effect on all



The Funding Agency Coordinating Team (FACT)

FACT is a group of federal and state organizations, including the OWRB’s financing programs, that offer financing to eligible Oklahoma public entities for water and wastewater projects. The purpose of the team is to facilitate the funding process through communication and streamlined processes.

FACT is hosted by the Oklahoma Rural Water Association (ORWA). The group meets quarterly to discuss the status of Oklahoma community water and wastewater infrastructure needs identified on the ODEQ’s enforcement list.

Invitations are extended to entities from across the state that are contending with the most urgent problems and have the greatest financial need, with the purpose of providing assistance to them as quickly and effectively as possible.

“crosscutters” a Categorical Exclusion (CatEx) is issued. If the project is determined to have a “may effect” or “adverse effect” on any of the crosscutters, further review and mitigation may be required.

Project types eligible for a CatEx include:

- Rehabilitation of existing facilities;
- Functional replacement of equipment;
- Construction of related facilities adjacent to the existing facilities that do not affect the degree of treatment or capacity;
- Project is in an unsewered community involving the replacement of existing onsite systems;
- Re-issuance of a NPDES permit; or
- Project relates to existing infrastructure systems that involve minor upgrading or minor expansion.

For more information on Cat Ex projects please visit, oklahoma.gov/owrb/financing/forms-and-guidance.html.

For treatment works projects which don't meet the criteria for a CatEx, a more extensive environmental review is conducted by either the applicant or OWRB. For these projects, OWRB issues an Environmental Assessment (EA). Subsequent to findings of the OWRB or crosscutter comments, the OWRB will issue a Finding of No Significant Impact (FONSI) or issue a notice that an Environmental Impact Statement (EIS) is required. A Final Decision will be issued after review of the EIS.

Additional environmental review may be required after an environmental decision is issued if work is added or changed during the project that was not included in the original project scope.

V. OWRB APPROVAL AND CLOSING

Once the project has been deemed eligible, the environmental and engineering review (as applicable) has been approved, and the potential borrower has been authorized financially and legally, then the project is sent to the Board for final approval.

If the project is approved by the Board, the project manager and loan analyst work with the loan applicant to set a time and date for closing. Close to the closing date, the loan analyst will typically meet with one of the borrower's employees to go over loan documentation requirements such as payment requisition, debt coverage, loan payment and more. This may take place in person or remotely. Loan documents are distributed by the applicant's Bond Counsel to the OWRB for legal and financial review. All required documentation is gathered for signatures and, unless the loan is to be fully forgiven, an interest rate is set.

Per the letter of binding commitment, a loan must be closed within one year of OWRB Approval unless an extension request is approved by the OWRB. If a loan has not been closed within nine months of approval, the loan analyst in charge of that loan will contact the applicant to better understand the reason for the delay and to discuss whether an extension request should be submitted. An extension provides an additional year (from the date of the extension approval) to close the loan.



ENVIRONMENTAL REVIEW

The process of reviewing a project and its potential environmental impacts to determine whether it meets federal, state, and local environmental standards.

Types of Environmental Review determinations:

- Categorical Exclusion (Cat-Ex)
- Finding of No Significant Impact (FONSI)
- Record of Decision (ROD) RARE

Many project types require NO Environmental Review or issuance of a determination.

INTEREST RATES AND TERMS §603(D)(1)(A)&(B)

The interest rate is calculated approximately ten days prior to loan closing. It currently consists of approximately 60% of Municipal Market Daily (MMD) AAA scale spot rates through

maturity plus 0.40% to 0.76% to account for interest rate risk, where 0.40% is charged on the shortest maturities and 0.76% is charged on the longest maturities. An additional 0.5% administrative fee is charged on the unpaid principal balances. The interest rate calculation is reviewed, at a minimum, annually by the OWRB and is subject to change at any time.

CWSRF loans have a maximum term of 30 years or the anticipated weighted average life expectancy of the project components being financed, whichever is less. The worksheet that the OWRB utilizes to determine the [Weighted Average](#) Useful Life of project components can be found on OWRB's website.

VI. CONSTRUCTION AND CONSTRUCTION MONITORING

After bids are opened and a construction contract awarded, a preconstruction conference is held to discuss the responsibilities of all parties during construction. Once all the required documentation has been received, reviewed, and approved by OWRB Engineers, construction of eligible projects can begin.

Projects are inspected to ensure that they are built according to the approved plans and specifications, and that they adhere to the established budget. Insurance requirements, Green Project Reserve (GPR), American Iron and Steel (AIS), Davis Bacon Act (DBA), and when applicable Build America, Buy America (BABA) compliance are verified during site visits. In addition, it is ensured that each project hires a qualified full-time resident inspector, to oversee construction work and assure that the work is being performed in a satisfactory manner in accordance with the approved plans and specifications, approved alterations, and in accordance with sound engineering principles and building practices.

During construction, pay requests submitted by the Entity are reviewed and processed. The review ensures the eligibility of claimed expenses, availability of sufficient funds as per the budget, absence of numerical errors and compliance with DB, AIS and BABA (when applicable).

Any changes and deviations from the original design introduced via Change Order or Amendment undergo a proper review. Once approved, the project budget is revised to reflect the change, when applicable. At project completion, a final inspection is conducted by OWRB staff. After project acceptance, Fiscal Sustainability Plan (FSP) compliance is assured, a final pay request is processed, and the project can then be closed.

VII. LOAN MONITORING

After a loan has been funded, the OWRB collects and reviews a variety of monthly and annual documents to ensure the entity's compliance with all loan covenants.

Financial audits must be provided annually unless the loan is expected to be fully forgiven. The OWRB reviews these audits to ensure that the borrower's minimum DCR requirement is met and that the audit opinion and findings do not raise concerns.

Property, general liability, workers compensation, and fidelity bond insurance verifications are received and reviewed annually to ensure an entity is properly insured. The entity's water and/or sewer operator certificates are also reviewed by the OWRB to ensure that the system is being operated by individuals who have been adequately trained. These requirements do not apply to entities who only have loans that are expected to be fully forgiven.

The OWRB stays in regular contact with all borrowers and offers assistance where possible to ensure that entities are able to meet all loan covenants. If an entity does not meet all loan covenants, OWRB staff will work with the entity to gather the required information. If requirements are still not met, a letter is sent notifying them of the deficiency and requiring them to make the necessary changes to meet the requirement.

LONG-TERM PROGRAM GOALS

The CWSRF continues to maintain long-term goals to ensure they assist the State in meeting the following CWA and State water quality goals:

- Maintain the fiscal integrity of the fund to ensure it remains viable and self-perpetuating to meet the long-range water quality needs of the State;
- Target outreach and assistance to communities that have never utilized CWSRF;
- Support the implementation of the OK Comprehensive Water Plan and future updates;
- Obtain maximum capitalization of the fund for the State while generating sufficient investment and loan interest earnings for debt service of the state match revenue bonds;
- Maintain and develop relationships with other funding agencies and water quality agencies/professionals to ensure resources are directed in a holistic approach; and
- Maintain EPA approval to reserve transfer authority in an amount up to 33% of the Drinking Water (DW) SRF capitalization grant between the DWSRF and the CWSRF.

SHORT-TERM PROGRAM GOALS

The State will pursue short-term goals in an effort to continually improve the CWSRF program. Oklahoma's CWSRF Program short-term goals include the following:

- Apply for all 3 CWSRF capitalization grants within the first year appropriated;
- Assist borrowers listed in this plan that are under enforcement orders to meet deadlines for municipal compliance in accordance with the CWA by providing financial or technical assistance;
- Develop programmatic procedures to provide in-house environmental documentation preparation services to borrowers;
- Educate lawmakers and appropriators on the value of fully funding the SRF programs;
- Create a system that notifies borrowers when disbursements have been sent out; and
- Establish a portal/dashboard to inform our clients of our program and where they can upload documents, in a secure environment, for review.

PROGRAMMATIC REQUIREMENTS

GREEN PROJECT RESERVE

As part of Federal Fiscal Year (FFY) 2024 Appropriations, OWRB is required to provide a minimum of 10 percent of the base Capitalization Grant for project components that meet the Green Project Reserve (GPR) requirements. This includes projects that incorporate green infrastructure, environmentally innovative, energy efficiency or water efficiency. The BIL implementation memo also incorporates that "if provided for in the annual appropriation, the green project reserve (GPR) is applicable to the BIL capitalization grants for the corresponding fiscal year." Therefore, this requirement applies also to the BIL General Supplemental Grant and the BIL Emerging Contaminant Grant. OWRB actively solicits interest groups and program stakeholders about potential GPR projects through conferences, seminar presentations, and announcements on relevant websites.

GPR components are identified during the online programmatic application process and OWRB has developed an Engineering Report (ER) checklist to help identify GPR components during the planning stages of the project. A description of funded projects that met this requirement is available for public viewing at oklahoma.gov/owrb/financing/ within the quarter in which the loan is made. The projects that include GPR-eligible items at the time of the final IUP are shown on the SFY 2025-2029 CWSRF PPL. This is a living document that changes during the year as more information is received. Final GPR project costs for the SFY will be included in the SFY 2025 CWSRF Annual Report and entered into the SRF Data System.

AFFORDABILITY CRITERIA §603(i)

The CWA requires that states develop affordability criteria that assist with the identification of applicants that would have difficulty financing projects. The affordability criteria must include information regarding employment, income, population trends and may include other information as dictated by the state.

For the CWSRF, OWRB calculates an entity’s adjusted per capita income (APCI) by the use of criteria for comparison to the nation’s adjusted per capita income with same data. A tier system approach has been developed to determine severity of need in regard to affordability. This information is identified using the American Community Survey (ACS) Data from the 2020 Census at data.census.gov/advanced. If other data is presented to OWRB which more accurately reflects the entity’s current or proposed service area, a re-evaluation on a case by case basis may be performed. Data submitted must include, but not be limited to, per capita income (PCI), employment rate, and population change trends for the proposed service area of the project.

The formulas below are how OWRB determines affordability criteria for each town in Oklahoma.

- a) Formula to determine an entity’s APCI for CWSRF.
 - $APCI = PCI \times \text{employment rate} \times \text{population change trend}$ (as compared to 2010 census data)
- b) To determine an entity’s percentage of adjusted per capita income, OWRB used the formula below for percentage ranking and tier determination.
 - $\% \text{ of APCI} = APCI / U.S. \text{ APCI}$

There are 4 tiers to determine affordability criteria as outlined below:

Tier	Community APCI as % of US APCI
4	APCI more than or equal to 81% or more of U.S. APCI
3	APCI more than or equal to 71%, but less than 81% of the U.S. APCI
2	APCI more than or equal to 56%, but less than 71% of the U.S. APCI
1	APCI 55% or less of U.S. APCI

The lower the tier number the greater financial need of the community based on the affordability criteria percentage where tier 4 does not meet the state’s affordability criteria. A majority of entities in Oklahoma have an affordability criteria tier calculation which can be viewed on OWRB’s website at owrb.ok.gov/affordabilitycalc. This list will be reviewed on a five-year rotation or based on current census data.

ADDITIONAL SUBSIDIZATION

FWPCA section 603(i) includes the requirement for a CWSRF Program to provide a minimum of 10 percent and a maximum of 30 percent of its base capitalization grant as additional subsidization to a municipality or intermunicipal, interstate, or State agency. Additionally, as part of the FFY 2024 Appropriations Act, 10 percent of the base capitalization grant shall be used by each state to provide additional subsidy to eligible recipients. These two are separate requirements for additional subsidization for the base program and are additive. Therefore, each

state must provide 20 percent and can provide up to 40 percent of the base capitalization grant as additional subsidy.

Also, as mandated under the BIL, 49 percent of funds from the CWSRF General Supplemental capitalization grant and 100 percent of funds from the CWSRF Emerging Contaminant capitalization grant shall be used as additional subsidy.

To summarize, for SFY 2025, the Oklahoma CWSRF will provide additional subsidy in the form of loan forgiveness to eligible recipients as follows from the FFY 2024 grant. Additionally, OWRB will utilize the leftover funds from the FFY 2023 emerging contaminant grant and the re-allotment from the remaining FFY 2022 emerging contaminant grant.

- 20-40% of the base appropriation which equals \$1,319,000-\$2,638,000 (10% from appropriations, 10-30% from FWPCA);
- 49% of the BIL General Supplemental appropriation which equals an amount of \$9,002,770; and
- 100% of the BIL Emerging Contaminant appropriations which equals an amount of \$2,252,000.

Minimum loan forgiveness available is \$12,573,770. For the BIL General Supplemental and the base appropriation (\$10,321,770), the Oklahoma CWSRF will provide loan forgiveness for the following in accordance with section 603(i) of the CWA:

- To benefit a municipality that meets the state's affordability criteria (as defined in the previous section).
 - 100% of eligible project costs up to a maximum loan forgiveness amount of \$1.5 million.
 - No cost share requirement.
 - Entities may only receive one award per fiscal year.
 - Documentation required for collaborative funding.
 - If a Consent Order or Notice of Violation has been issued by ODEQ on the wastewater system, loan forgiveness must be used to address tasks outlined in the order or violation.
 - Loan Forgiveness allocation will be based on an entity's Project Priority List (PPL) ranking which will be locked in on a quarterly basis.
 - CWSRF Project Priority List ranking will include an additional Affordability Criteria point value.
 - Tier 3 – 60 points
 - Tier 2 – 80 points
 - Tier 1 – 100 points
 - Should a project not proceed to the OWRB Board of Directors within the quarter those funds are available, existing PPL projects will be re-ranked, along with the initial ranking of any new PPL submissions, at the following quarter.
- To benefit a municipality that does not meet the state's affordability criteria but will benefit individual ratepayers.

Systems designated as Tier1, Tier 2, or Tier 3 under the Oklahoma Affordability Criteria can most directly influence their PPL ranking score through a project's Readiness to Proceed. Loan forgiveness Readiness to Proceed consideration for planning and design projects will include: PPL request, preliminary engineering contract, scope of planning, and submission of loan application to OWRB for full 400 category point value. Readiness to Proceed consideration for construction projects will include: PPL request, engineering report or technical memo, plans and specifications to ODEQ or OWRB, submission of loan application to OWRB, permit to construct, and categorical

exclusion request or environmental informational document for full 400 category point value. Bids in hand will not be required before Board Approval and tie breaker procedures will apply if necessary.

CLIMATE RESILIENCY

Oklahoma has its fair share of climate change and natural disasters. OWRB is able to assist our communities with financing to help ease the burden from natural disasters, bioterrorism and cyber-attacks.

DAVIS BACON ACT §602(B)(6)

The amended CWA applies the DB provision of section 513 to any project for Treatment Works that is funded by the CWSRF. Compliance procedures are consistent with the EPA Guidance entitled “Wage Rate Requirements under the Consolidated and Further Continuing Appropriations Act, 2013, as amended.”

For every treatment works construction project funded by a CWSRF loan, OWRB staff verifies that appropriate wage rates are obtained 10 days prior to bid opening, as required by the Act. Payroll certification letters (verified by owner or engineer) are received and reviewed along with each construction reimbursement request, confirming that appropriate wages are being paid.

AMERICAN IRON AND STEEL §608

Section 608 of the CWA requires projects for construction, alteration, maintenance or repair of Treatment Works to use iron and steel products that are produced in the US. The definition of iron and steel products include “lined or unlined pipes and fittings, manhole covers and other municipal castings, hydrants, tanks, flanges, pipe clamps and restraints, valves, structural steel, reinforcement precast concrete, and construction materials”.

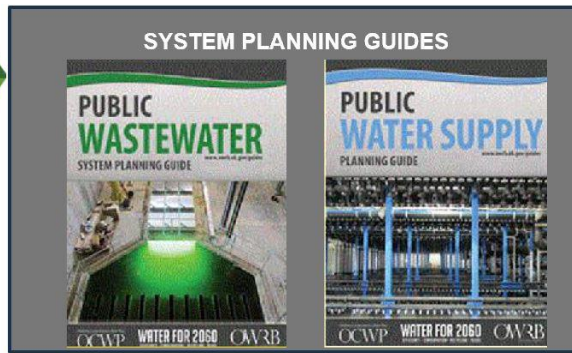
OWRB uses the EPA guidance to interpret the AIS provision. This guidance includes a mechanism for borrowers to request a waiver from the requirements of this section of the CWA. OWRB checks for AIS language in all appropriate bid documents , certification letters from the contractor, engineer or resident inspector is required to certify that they will comply with AIS.

FISCAL SUSTAINABILITY PLANS §603(D)(1)(E)

EPA requires Fiscal Sustainability Plans (FSPs) to be developed for each wastewater treatment works project. Each CWSRF program must develop specific criteria for the contents of the FSP. OWRB recommends the sections designated for FSPs available online at oklahoma.gov/owrb/FSPguides. The FSP, at a minimum, is required to include the following contents:

- Inventory of critical assets (Section 4 of the Planning Guide);
- Evaluation of the condition and performance of those assets (Sections 4 & 5);
- A plan to maintain, repair and replace the components of the Treatment Works overtime and a plan to fund these activities (Section 8); and
- Certification that the recipient has evaluated and will be implementing water and energy conservation efforts.

The loan recipient will certify in their loan agreement that an FSP fulfilling these requirements has already been developed and implemented or that one will be completed no later than at final inspection of the construction project. Prior to final reimbursement, the system must certify that the FSP has been developed. Additionally, OWRB encourages entities to develop a system wide FSP, which should be updated as new projects are constructed.



ASSURANCES, CERTIFICATION, AND SPECIFIC REQUIREMENTS FOR BASE PROGRAM

The CWSRF Operating Agreement between Oklahoma and the EPA incorporates required assurances, certifications, and specific requirements of the following CWA sections:

§602(B)(2) STATE MATCHING FUNDS

The OWRB agrees that State monies in an amount equaling 20 percent of the amount of each base grant payment will be deposited into the CWSRF on or before the date on which the State receives each payment from the grant award or the State will utilize other measures for depositing the State match allowable under 40 CFR 35.3135 (b)(1). Each annual CWSRF grant application will include details on the source of State matching funds. For the FFY 2024 grant and general supplemental grant, the state match will be provided by proceeds from the 2023 CWSRF Bond Issue, the anticipated 2024 CWSRF Bond Issue, state appropriations, or the CWSRF Administrative Account held outside the CWSRF.

§602(B)(3) BINDING COMMITMENTS

The OWRB will enter into binding commitments with recipients in an amount at least equal to 120 percent of each quarterly federal base grant payment and 110 percent of each quarterly federal general supplemental grant payment within one year of receipt of that payment.

§602(B)(9) ACCOUNTING AND AUDIT PROCEDURES

CWSRF Assistance Recipients will maintain project accounts in accordance with generally accepted government accounting principles including standards relating to the reporting of infrastructure assets. Additionally, the OWRB will require Single Audits of applicable recipients and will act as a pass-through entity in accordance with the Office of Management and Budget (OMB) Uniform Guidance. This requirement will be implemented through a condition in the financial assistance agreement.

SIGNAGE REQUIREMENTS

The EPA issued “Guidelines for Enhancing Public Awareness of the SRF Assistance Agreements” on June 3, 2015, which provides several options for compliance under the base grant. The OWRB has chosen the press release option to fulfill this requirement to be distributed at the time of loan approval. Press releases will be posted at owrb.ok.gov/news and will include the following information:

- Name of the facility, project and community;

- State SRF administering the program;
- Project is wholly or partially funded with EPA funding;
- Brief description of the project; and
- Listing the water quality benefits to be achieved.

Additionally, OWRB will include signage language explaining the requirement in the loan agreements. The signage information will also be included in the bid packets, and all projects will be required to display a sign that meets these requirements during construction.

IDENTIFICATION OF EQUIVALENCY PROJECTS

Equivalency projects are defined within the SRF programs as a select group of loans whose sum is equal to the amount of the capitalization grant(s) which are required to meet certain federal requirements. Per the EPA’s September 22, 2014 directive, the same group of equivalency loans must meet the federal crosscutter, single audit, Disadvantaged Business Enterprise, Signage, A/E procurement, and FFATA reporting requirements. The addition of Build America, Buy America (BABA) provisions for CWSRF construction projects in the BIL has been determined to be an equivalency requirement as well. The OWRB may identify certain projects to meet the equivalency requirements as projects progress. If a project is identified as an equivalency project, additional incentives may be applied, such as interest rate reduction or loan forgiveness. The final list of entities that comply with these requirements will be included in the FFATA Reporting and SFY 2025 Annual Report.



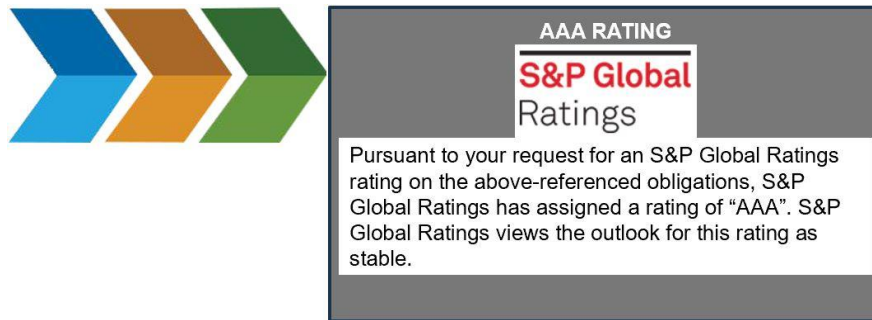
OWRB'S FINANCIAL MANAGEMENT

CWSRF FINANCING PLAN

The CWSRF financing plan provides three major elements: 1) a pool of funds to meet the funding demand that is made available with the use of capitalization grants, bond proceeds, and second round funds; 2) below market rate financing and program incentives to help communities meet applicable federal/state pollution control laws; and 3) flexibility and perpetuity of the CWSRF to meet future water quality needs.

As the first step in issuing bonds, a thorough examination of the PPL is done to see what the possible demand for the CWSRF will be over the next year. Then a review of funds available for current draws is done including checking whether bond proceeds remain and how much cash is available. A more in-depth discussion is had with borrowers on the PPL to gain a better understanding of the timeline of their projects. An analysis is then completed to see how much equity (funds) the OWRB possesses to contribute to the bond issue. Spreadsheets are then created to take a snapshot of all the current balances of all the sources of money that are available for funding draws and equity. At this point in the bond issue process, an estimated amount of the bond issue—if one is needed—is

calculated and a tentative date is set for closing. Once a date is set, the OWRB closely monitors the cash draws in order to be able to meet the Tax Increase Prevention and Revitalization Act of 2005 (TIPRA) first year requirement of expending 30% of the bond proceeds. The OWRB does this by reimbursing funds loaned out from cash and reimbursing them back from bond proceeds. The PPL is once again evaluated to see if TIPRA's third year provisions can be met, which is when 95% of the bond proceeds are required to be expended. Average monthly draws are calculated to estimate how long the remaining cash funds will last. After reviewing all the information, a timeline is finalized for the bond issue.



TRANSFER AUTHORITY BETWEEN CLEAN WATER AND DRINKING WATER SRFs

In accordance with the Safe Drinking Water Act (SDWA) and the SRF funds transfer provisions (Section 302), the State hereby reserves the authority to transfer an amount up to 33 percent of the DWSRF program capitalization grant[s] to the CWSRF program or an equivalent amount from the CWSRF program to the DWSRF program. The transfer authority was approved by the Attorney General July 27, 2004 and by the EPA on September 3, 2004.

During SFY 2025, Oklahoma may determine it is necessary to transfer funds between the two programs in order to assure adequate capacity to meet funding demands. If the entire unused reserved amount of transfer authority were to be transferred from the CWSRF to the DWSRF during SFY 2025, the transfer is not anticipated to impair the OWRB's ability to fund all projects on the SFY 2025 PPL. Neither would such a transfer have an impact on set-aside funds.

The long-term impact of these transfers on the CWSRF may result in a reduction of leveraging capacity, meaning that at some future date, unless funds are transferred back from the DWSRF, the OWRB may not have adequate program funds to meet the total demand for CWSRF funding.

With this IUP, the OWRB requests the ability to transfer funds as necessary between the CWSRF and DWSRF programs during SFY 2025. Approval of the IUP will constitute approval of the transfer request. The OWRB understands that funds transferred between programs during SFY 2025 or in future years may not be available for return to the SRF of origin if a permanent extension of transfer authority is not granted. To date, we have transferred \$47,992,182 and through the 2024 Capitalization Grant, there is authority to transfer up to an additional \$45,260,010.

CROSS-COLLATERALIZATION OF THE CWSRF AND DWSRF REVENUE BOND STRUCTURE

The Master Trust Agreement dated October 1, 2003, the First Amendment to the Master Trust Agreement dated December 1, 2019, and the Master Trust Indenture dated December 1, 2019 (collectively “the Master Trust Documents”), provide for a bond structure that allows for cross-collateralization of the CWSRF and the DWSRF in order to provide additional bond security and ratings enhancement for both programs. With cross-collateralization, excess CWSRF revenues (revenues pledged to repayment of CWSRF bonds over and above what is needed to make actual debt service payments) would be available to cure any DWSRF bond payment default or reserve fund deficiency. Likewise, excess DWSRF revenues would be available to cure any CWSRF bond payment default or reserve fund deficiency. Pursuant to federal regulations, cross-collateralization support cannot extend to debt specifically issued for the purpose of providing state matching funds.

The Master Trust Documents provide adequate safeguards to ensure that future CWSRF or DWSRF bond issues will comply with this limitation. Revenues pledged to the repayment of CWSRF bonds include principal and interest payments received on loans: investment earnings on funds and accounts within the bond indenture, including a reserve fund comprised of CWSRF program assets (cash). The Master Trust Documents and each series bond indenture require that revenues be pledged sufficient to cover the debt service requirement for each payment date at least 1.1 times. Accordingly, a cash flow surplus is anticipated for each period absent a borrower default on a loan. This surplus flows to the other series of the CWSRF and DWSRF bonds. Under the new Master Trust Indenture, all CWSRF loans are pledged to all CWSRF outstanding bonds, and all DWSRF loans are pledged to all DWSRF outstanding bonds.

The order of priority for surplus CWSRF pledged revenues is:

- CWSRF bond issue debt service payment deficiencies;
- Any DWSRF bond issue debt service payment deficiencies (but not DWSRF state match bonds);
- CWSRF bond issue reserve fund deficiencies;
- Any DWSRF bond issue reserve fund deficiencies (but not DWSRF unrestricted reserve funds that secure DWSRF state match bonds);
- To replenish and repay the DWSRF for any surplus DWSRF pledged revenues that were previously utilized to cure a CWSRF bond issue debt service or reserve fund deficiency; and
- All remaining funds are released back to the CWSRF Loan Account.

The order of priority for surplus DWSRF pledged revenues is similarly structured, as such any surplus CWSRF pledged revenues that are utilized to cure a DWSRF bond issue debt service or reserve fund deficiency will ultimately be repaid to the CWSRF through operation of the Master Trust Documents.

INVESTMENT AUTHORITY BETWEEN CLEAN WATER AND DRINKING WATER SRFs

Special permission was received from the EPA on October 6, 2006, in accordance with the Federal Water Quality Act of 1987, to invest in the DWSRF a portion of the CWSRF in order to provide an efficient and economical interim financing alternative.

The possible investment would include funds from second round principal repayments and investment earnings that are currently being held by the Oklahoma State Treasurer. The funds would be replenished with proceeds from a DWSRF bond issue as soon as enough DWSRF loans have originated that in the aggregate total a desired

bond issue size. Oklahoma may request an investment of funds in order to assure adequate capacity to meet funding demands for the DWSRF program.

ADMINISTRATIVE COST OF THE CLEAN WATER SRF §603(D)(7)

To administer the program, the OWRB historically utilized funds from the banked 4% set-aside from the federal capitalization grant, as authorized by the CWA Amendments of 1987, along with an annual loan administration fee equal to 0.5% on unpaid loan balances. With the reauthorization of the CWA, options regarding the amount of funds available to administer the CWSRF program have changed. The maximum amount of CWSRF funds allowable for covering the reasonable costs of administering the fund is the greatest of the following:

- An amount equal to 4 percent of all grant awards received by a State CWSRF less any amounts used in previous years;
- \$400,000; or
- 1/5 percent of the current valuation of the fund.

In reviewing the three options, the OWRB will continue to bank an amount equal to 4% of all grant awards received by a State CWSRF less any amount that has been used in previous years. The current level of CWSRF banked funds is \$13,532,621.88.

The SFY 2025 program administrative budget is expected to be approximately \$3.0 million, with an estimated \$400,000 from the 4% set-aside fund from awarded capitalization grants and \$2.5 million from the Administrative Fund.

FEES §602(B)(12)

The annual loan administration fee charged to the borrowers is 0.5% of their outstanding principal loan balance billed semi-annually. The initial application fee charged to the borrower is based on the loan amount requested as shown in Table 3. All these fees are deposited into the Administrative Fund (Table 4), held outside the CWSRF, and are used solely for the purpose of administering the CWSRF, including long-term loan servicing and other authorized purposes. An annual financial audit is performed by an accounting firm and will be included in the Annual Report to EPA.

TABLE 4: SFY 2024 UNRESTRICTED SOURCES BY ADMINISTRATIVE FUND

Projected Beginning Balance, 7/1/2024*	\$7,133,826.56
Projected Application Fees	\$5,000.00
Projected Administrative Fee Revenue	\$3,000,000.00
Total Sources	\$10,138,826.56
Projected Expenses**:	\$2,500,000.00
Projected Ending Balance, 6/30/2025	\$7,638,826.56

*Balance projected through 6/30/24

**Includes Personnel, Travel, Professional Services, Equipment, etc.

SFY 2025 PROPOSED PROJECTS

For SFY 2025, the OWRB has received requests for 222 wastewater and water quality projects totaling \$453,055,382.21 (Appendix A). This number is representative of requests received through March 15, 2024. Any applications, received after March 15, 2024, will be processed and added to the SFY 2025 PPL as a first revision.

OWRB continually accepts requests throughout the year and keeps an up-to-date list of projects added and removed throughout the year on our website at <https://oklahoma.gov/owrb/financing/clean-water-state-revolving-fund-loans.html>. All projects go through a public process when added to the list. It provides a listing of these fundable projects, GPR, GPR type, loan type, and, if applicable, Oklahoma Pollutant Discharge Elimination System permit number, pursuant to CWA Section 606(c)(1-11). The PPL may be revised if the financing strategy changes or additional projects are identified. Changes to the PPL will be tracked and reported in the SFY 2025 Annual Report.

Projects shall conform to a state-approved 208 Water Quality Management Plan, 319 NPS Management Plan, Stormwater Management Plan or Quality Assurance Project Plan to be considered for funding. Based on initial environmental reviews, no proposed projects are anticipated to require a formal EIS study. Projects that meet the requirements of the capitalization grant may receive loan funds from capitalization grant monies, state matching funds, CWSRF bonds, interest and investment earnings, and monies repaid to the fund by previous borrowers, called “second round monies.”

BYPASS PROVISION

According to OAC 785:50-9-23(f)(2), a project on the fundable portion of the list may be bypassed if it is determined that the project will not be ready to proceed during the funding year and added to the planning portion of the list. This determination will be made on projects that are unable to meet the schedule established on the priority list. The applicant, whose project is affected, shall be given written notice that the project is to be bypassed. Projects that have been bypassed may be reinstated on the fundable portion of the list if sufficient funds are available, and the project completes the necessary tasks to proceed. Funds which become available due to the utilization of these bypass procedures will be treated in the same manner as additional allotments.

TABLE 5: BANKED ADMINISTRATIVE FUNDS

(Expended vs. Available)

CAP GRANT NO. CS40	CAP GRANT FUNDS	4% SET-ASIDE AMOUNT	STATE ADMIN. YEAR	EXPENDED FROM 4% SET ASIDE	BANKED 4% SET ASIDE BALANCE CUMULATIVE	RECEIVED IN/OUTSIDE ACCOUNT**	EXPENDED FROM OUTSIDE ACCOUNT	EXPENDED FROM OUTSIDE ACCOUNT/BUMP	OUTSIDE ACCT** BALANCE CUMMULATIVE
0001-89-0	88	\$371,120.00	1990	\$267,260.20	\$103,859.80	\$0.00	\$0.00		\$0.00
0001-89-1	89	\$303,896.00	1991	\$317,222.55	\$90,533.25	\$6,645.85	\$0.00		\$6,645.85
0001-90-0	90	\$314,480.00	1992	\$304,224.90	\$100,788.35	\$61,038.10	\$4,845.78		\$62,838.17
0001-91-0	91	\$663,224.76	1993	\$338,973.80	\$425,039.31	\$135,268.39	\$19,201.38		\$178,905.18
0001-92-0	92	\$627,909.48	1994	\$412,302.79	\$640,646.00	\$172,677.21	\$91,539.01		\$260,043.38
0001-93-0	93	\$621,141.84	1995	\$36,317.36	\$1,225,470.48	\$198,427.36	\$374,450.40		\$84,020.34
0001-94-0	94	\$385,304.00	1996	\$370,594.21	\$1,240,180.27	\$204,594.86	\$217,803.20		\$70,812.00
0001-95-0	95	\$398,047.32	1997	\$376,309.00	\$1,261,918.59	\$110,168.75	\$81,189.13		\$99,791.62
0001-96-0	96	\$652,014.00	1998	\$283,979.00	\$1,629,953.59	\$338,310.69	\$311,939.84		\$126,162.47
0001-97-0	97	\$199,444.00	1999	\$0.00	\$1,829,397.59	\$377,880.55	\$378,995.72		\$125,047.30
0001-98-0	98	\$435,164.40	2000	\$0.00	\$2,264,561.99	\$491,889.36	\$449,188.42		\$167,748.24
0001-99-0	99	\$435,200.04	2001	\$220,545.42	\$2,479,216.61	\$601,236.58	\$507,070.09	\$1,857.93	\$260,056.80
0001-100-0	2000	\$439,868.08	2002	\$144,193.71	\$2,774,890.98	\$610,366.39	\$707,864.29	\$26,075.53	\$136,483.37
0001-101-0	2001	\$429,869.88	2003	\$128,364.98	\$3,076,395.88	\$721,147.29	\$615,566.98	\$43,131.32	\$198,932.36
40000202	2002	\$430,828.20	2004	N/A	\$3,507,224.08	\$793,865.98	\$678,699.06	\$3,935.22	\$310,164.06
40000204	2003	\$428,028.00	2005	N/A	\$3,935,252.08	\$843,271.10	\$745,075.59	\$0.00	\$408,359.57
40000205	2004	\$428,028.00	2006	N/A	\$4,363,280.08	\$874,416.19	\$778,732.54	\$0.00	\$504,043.22
40000206	2005	\$347,752.00	2007	\$61,048.30	\$4,649,983.78	\$977,081.00	\$696,811.00	\$0.00	\$784,313.22
40000207	2006	\$281,852.00	2008	\$31,751.26	\$4,900,084.52	\$959,796.00	\$875,374.00	\$0.00	\$868,735.22
40000208	2007/2008	\$563,496.00	2009	\$127,823.28	\$5,335,757.24	\$1,019,751.00	\$1,193,883.00	\$0.00	\$694,603.22
2W-96688501	ARRA	\$1,266,484.00	2010	\$742,626.65	\$5,859,614.59	\$1,179,759.31	\$1,178,736.04	\$0.00	\$695,626.49
40000210	2009/2010	\$876,564.00	2011	\$255,064.13	\$6,481,114.46	\$1,002,432.46	\$1,206,749.42	\$0.00	\$491,309.53
40000211	2011	\$477,200.00	2012	\$80,572.58	\$6,877,741.88	\$1,757,659.00	\$1,053,387.11	\$0.00	\$1,195,581.42
40000212	2012	\$456,760.00	2013	N/A	\$7,334,501.88	\$2,049,551.00	\$1,376,583.00	\$0.00	\$1,868,549.42
40000213	2013	\$431,440.00	2014	N/A	\$7,765,941.88	\$2,276,819.00	\$1,955,991.00	\$0.00	\$2,189,377.42
40000214	2014	\$453,120.00	2015	N/A	\$8,219,061.88	\$2,252,743.00	\$2,051,801.00	\$0.00	\$2,390,319.42
40000215	2015	\$450,760.00	2016	N/A	\$8,669,821.88	\$2,358,714.00	\$2,078,957.00	\$0.00	\$2,670,075.91
40000216	2016	\$431,800.00	2017	N/A	\$9,101,621.88	\$2,466,908.00	\$1,717,624.00	\$0.00	\$3,419,359.91
40000217	2017	\$428,480.00	2018	N/A	\$9,530,101.88	\$2,497,638.55	\$1,737,419.81	\$0.00	\$4,179,578.65
40000218	2018	\$518,680.00	2019	N/A	\$10,048,781.88	\$2,544,874.32	\$1,879,657.68	\$0.00	\$4,844,795.29
40000219	2019	\$513,480.00	2020	N/A	\$10,562,261.88	\$2,672,787.37	\$4,608,132.40	\$0.00	\$2,909,450.26
40000220	2020	\$513,520.00	2021	N/A	\$11,075,781.88	\$2,875,075.00	\$1,989,284.00	\$0.00	\$3,795,241.26
40000221	2021	\$513,480.00	2022	N/A	\$11,589,261.88	\$3,153,645.00	\$2,081,997.00	\$0.00	\$4,866,889.26
40000222	2022	\$979,320.00	2023	N/A	\$12,568,581.88	\$3,422,450.00	\$2,401,570.00	\$0.00	\$5,887,769.26
40000223*	2023	\$964,040.00	2024	N/A	\$13,532,621.88	\$3,696,657.30	\$2,450,600.00	\$0.00	\$7,133,826.56
TOTAL	N/A	\$18,031,796.00	N/A	\$4,499,174.12	\$13,532,621.88	\$45,705,545.96	\$38,496,718.89	\$75,000.00	\$7,133,826.56
AVAILABLE ADMINISTRATIVE FUNDS					\$13,532,621.88				\$7,133,826.56
TOTAL OF ALL AVAILABLE ADMINISTRATIVE FUNDS									\$20,666,448.44

*Revenues and Expenditures from the outside account are projected through June, 30, 2024 and will be updated with the Annual Report.

**The outside account revenue is generated from a 0.50% annual administrative fee on all outstanding loans.

SOURCES AND COMMITMENT OF FUNDS DURING SFY 2025

Table 6 identifies sources and commitments of all CWSRF funds. It is anticipated that approximately \$286.29 million will be available during SFY 2025. Approximately \$280.7 million in fund commitments have been identified.

The proposed bond issue is an estimate of the amount of bonds we could need. OWRB will do a cash flow with our financial advisor to determine the amount necessary to fund the difference of current cash and anticipated cap grants versus the amount needed for loan disbursements.

As funds are available, the OWRB will fund all new loans from the revolving fund, bond proceeds, capitalization grants, loan repayments, interest earnings, or release of reserve funds. Under the OWRB's financing strategy, new loans that are funded from cash reserves may be reimbursed with proceeds from future bond issues. A reimbursement resolution detailing the loans which would be available to be refunded back to the OWRB from the proceeds of future bond issues will be approved by the Board in advance of the issue.

TABLE 6: SFY 2025 UNRESTRICTED FUND SOURCES BY STATE FISCAL QUARTER

SOURCES OF FUNDS	TOTALS
PROJECTED BEGINNING BALANCE (FY 24 Carryover) Includes: Open cap grants, cash in 2nd Round Fund, outstanding bond proceeds, remaining state match funds	\$31,962,334
2024 CAPITALIZATION GRANT PAYMENTS	\$6,595,000
2024 STATE MATCH DEPOSIT	\$1,319,000
2024 BIL SUPPLEMENTAL GRANT	\$18,373,000
2024 BIL SUPPLEMENTAL 20% MATCH	\$3,674,600
EMERGING CONTAMINANTS	\$2,252,000
PROPOSED 2024 BOND ISSUE	\$150,000,000
LOANS:	
Interest Earnings	\$13,623,766
Principal Repayments	\$53,414,895
RELEASE of RESERVE FUNDS	\$3,338,635
INVESTMENT INCOME-TREASURY	
State Treasurer's Cash Management Program Interest (recycled funds)	\$1,175,387
Lawton Investment Principal/Interest	\$485,376
Short-Term Investment Earnings-BancFirst	\$76,596
TOTAL SOURCES	\$286,290,589
FUND COMMITMENTS	TOTALS
LOAN DISBURSEMENTS - anticipated 25% of SFY 2025 PRIORITY LIST	\$113,263,846
LOAN OBLIGATIONS - PRIOR YEARS (anticipated to be drawn in fy 25)	\$129,145,375
OWRB ADMINISTRATIVE EXPENSES	\$400,000
BOND INTEREST for 2014A, 2015, 2019, 2020A & 2023 CWSRF Bonds:	\$14,168,557
BOND PRINCIPAL for 2014A, 2015, 2019, 2020A & 2023 CWSRF Bonds:	\$23,740,000
Total of Bond, Principal and Interest	\$37,908,557
TOTAL FUND COMMITMENTS	\$280,717,778
DIFFERENCE OF SOURCES AND FUND COMMITMENTS	\$5,572,811

PUBLIC REVIEW AND FUTURE IUP AMENDMENTS

The OWRB met the requirements under 33 U.S.C. § 606 (c) of the CWA through the public review and comments process. A public meeting to review the SFY 2025 CWSRF Draft IUP and PPL will be held June 4, 2024. A public notice, through a press release, was issued on April 28, 2024, to print media statewide via The Oklahoman. The Draft SFY 2025 IUP and PPL were made available at <https://oklahoma.gov/owrb/financing/clean-water-state-revolving-fund-loans.html> prior to the public notice. Additionally, notice was published on the OWRB CWSRF webpage and distributed to public wastewater authorities currently listed on the IUP, state and federal agencies, and other stakeholders on February 5, 2024, via email. The public comment period was open through June 6, 2024. Any public comment pertaining to the IUP or PPL received in our email at fad@owrb.ok.gov, will be addressed and placed in this section.

Future changes in the IUP may be required and shall be made in accordance with procedures provided in 40 CFR Part 35, Subpart K, and the OWRB CWSRF regulations. Revisions to this plan required for administrative purposes, for example, shall be made by the OWRB without public notice. Once the PPL/IUP is finalized, projects may be added to the PPL anytime throughout the year. The revised PPL will be posted at <https://oklahoma.gov/owrb/financing/clean-water-state-revolving-fund-loans.html> approximately 15 days prior to anticipated approval of the additional project(s) with a notification sent via Gov Delivery email a comprehensive distribution list. Any revisions to the IUP and PPL will be reported to the EPA in the OWRB Financial Assistance Division's CWSRF SFY 2025 Annual Report.

PUBLIC COMMENTS AND HOW THEY WERE ADDRESSED

-

TABLE 7: HISTORICAL FUNDING SOURCES AS OF JUNE 8, 2023

Fiscal Year	Federal Cap Grant Amount	State Match Amount	Excess Match Funds	Bond Issue Proceeds	Notes	Less 4% Administration	Total Available For Assistance
1988	\$9,278,000.00	\$1,855,600.00	\$0.00	\$0.00	(1)	\$371,120.00	\$10,762,480.00
1989	\$7,597,400.00	\$1,519,480.00	\$0.00	\$0.00	(2)	\$303,896.00	\$8,812,984.00
1990	\$7,862,000.00	\$1,572,400.00	\$0.00	\$0.00	(3)	\$314,480.00	\$9,119,920.00
1991	\$16,580,619.00	\$3,316,123.80	\$0.20	\$0.00	(3)	\$663,224.76	\$19,233,518.24
1992	\$15,697,737.00	\$3,139,547.40	\$0.60	\$0.00	(4)	\$627,909.48	\$18,209,375.52
1993	\$15,528,546.00	\$3,105,709.20	-\$0.20	\$0.00	(5)	\$621,141.84	\$18,013,113.16
1994	\$9,632,600.00	\$1,926,520.00	\$0.00	\$0.00	(6)	\$385,304.00	\$11,173,816.00
1995	\$9,951,183.00	\$1,990,236.60	\$0.40	\$0.00	(7)	\$398,047.32	\$11,543,372.68
1996	\$16,300,350.00	\$3,260,070.00	-\$1.00	\$0.00	(7,8)	\$652,014.00	\$18,908,405.00
1997	\$4,986,100.00	\$997,220.00	\$21,450.00	\$0.00	(8)	\$199,444.00	\$5,805,326.00
1998	\$10,879,110.00	\$2,175,822.00	\$8,644.94	\$0.00	(9)	\$435,164.40	\$12,628,412.54
1999	\$10,880,001.00	\$2,176,000.20	\$105,646.80	\$0.00	(10)	\$435,200.04	\$12,726,447.96
2000	\$10,996,702.00	\$2,199,340.40	\$82,990.54	\$0.00	(11)	\$439,868.08	\$12,839,164.86
2001	\$10,746,747.00	\$2,149,349.40	\$677.89	\$0.00	(12)	\$429,869.88	\$12,466,904.41
2002	\$10,770,705.00	\$2,154,141.00	\$0.00	\$26,000,000.00	(12,13)	\$430,828.20	\$38,494,017.80
2003	\$10,700,700.00	\$2,140,140.00	\$0.00	\$127,500,000.00	(14)	\$428,028.00	\$139,912,812.00
2004	\$10,720,400.00	\$2,144,080.00	\$0.00	\$0.00	(14)	\$428,816.00	\$12,435,664.00
2005	\$8,693,800.00	\$1,738,760.00	\$0.00	\$0.00	(14)	\$347,752.00	\$10,084,808.00
2006	\$7,046,300.00	\$1,409,260.00	\$67,760.00	\$0.00	(14)	\$281,852.00	\$8,241,468.00
2007/2008	\$14,087,400.00	\$2,817,480.00	\$0.00	\$0.00	(15)	\$563,496.00	\$16,341,384.00
ARRA	\$31,662,100.00	N/A	\$0.00	\$0.00		\$1,266,484.00	\$30,395,616.00
2009/2010	\$21,914,200.00	\$4,382,840.00	\$0.00	\$93,534,169.20	(15,16)	\$876,568.00	\$118,954,621.20
2011	\$11,930,000.00	\$2,386,000.00	\$0.00	\$0.00	(16)	\$477,200.00	\$13,838,800.00
2012	\$11,419,000.00	\$2,283,800.00	\$0.00	\$100,000,000.00	(16,17)	\$456,760.00	\$113,246,040.00
2013	\$10,786,000.00	\$2,157,200.00	-\$67,760.00	\$0.00	(17)	\$431,440.00	\$12,444,000.00
2014	\$11,328,000.00	\$2,265,600.00	\$0.00	\$0.00	(18)	\$453,120.00	\$13,140,480.00
2015	\$11,269,000.00	\$2,253,800.00	\$0.00	\$114,245,235.87	(19)	\$450,760.00	\$127,317,275.87
2016	\$10,795,000.00	\$2,159,000.00	\$124,800.00	\$0.00	(19)	\$431,800.00	\$12,647,000.00
2017	\$10,712,000.00	\$2,142,400.00	\$0.00	\$0.00	(20)	\$428,480.00	\$12,425,920.00
2018	\$12,967,000.00	\$2,593,400.00	\$0.00	\$0.00	(21)	\$518,680.00	\$15,041,720.00
2019	\$12,837,000.00	\$2,567,400.00	\$0.00	\$0.00	(22)	\$513,480.00	\$14,890,920.00
2020	\$12,838,000.00	\$2,567,600.00	\$0.00	\$121,128,525.76	(23)	\$513,520.00	\$136,020,605.76
2021	\$12,837,000.00	\$2,567,400.00	\$0.00	\$0.00	(23)	\$513,480.00	\$14,890,920.00
2022	\$9,349,000.00	\$1,869,800.00	\$0.00	\$0.00	(24)	\$373,960.00	\$10,844,840.00
2022 BIL	\$14,379,000.00	\$1,437,900.00	\$0.00	\$171,071,209.35	(24)	\$575,160.00	\$186,312,949.35
2022 EC	\$755,000.00	N/A	\$0.00	\$0.00		\$30,200.00	\$724,800.00
2023	\$6,061,000.00	\$1,212,200.00	\$0.00	\$0.00	(24)	\$242,440.00	\$5,818,560.00
2023 BIL	\$16,840,000.00	\$1,684,000.00	\$0.00	\$0.00	(24)	\$673,600.00	\$16,166,400.00
2023 EC	\$1,200,000.00	N/A	\$0.00	\$0.00		\$48,000.00	\$1,152,000.00
Totals	\$450,814,700.00	\$80,317,620.00	\$344,210.17	\$753,479,140.18		\$18,032,588.00	\$1,264,026,862.35

Notes:

- 1 FY 1988 state match appropriated by the legislature from the Statewide Water Development Revolving Fund. - 7/30/88, H.B. 1571
- 2 FY 1989 state match appropriated by the legislature from the Statewide Water Development Revolving Fund. - 4/26/89, S.B. 51
- 3 FYs 1990 and 1991 state matches appropriated by the legislature from the Special Cash Fund. - 3/20/91, S.B. 144
- 4 \$2,892,047 of FY 1992 state match appropriated by the legislature from the Constitutional Reserve Fund. - 5/28/93, S.B. 390; \$200,000 in state match provided by Ute settlement - State of New Mexico and \$47,501 in state match provided from OWRB grant account.
- 5 FY 1993 state match appropriated by the legislature from the Constitutional Reserve Fund. - 5/18/94, H.B. 2761
- 6 OWRB issued its \$1,955,000 SRF Program Notes, Series 1994 on October 25, 1994. The Series 1994 Notes were paid from monies in the Debt Service Reserve Fund for the Board's 1985 State Loan Program Bonds.
- 7 OWRB issued its \$4,050,000 CWSRF Revenue Notes, Series 1996 on May 22, 1996. The Series 1996 Notes were paid from investment and interest earnings on CWSRF accounts and repayments on the Guymon and Ketchum State Loan Program Bond loans. \$1,990,237 went toward meeting the FY 1995 state match and \$2,018,545 toward the FY 1996 state match.
- 8 OWRB issued its \$2,275,000 CWSRF Revenue Notes, Series 1997 on June 26, 1997. The Series 1997 Notes were paid from investment and interest earnings on CWSRF accounts and repayments on the Guymon and Ketchum State Loan Program Bond loans. \$1,241,524 went toward meeting the FY 1996 state match and \$1,018,670 toward the FY 1997 state match.
- 9 OWRB issued its \$2,200,000 CWSRF Revenue Notes, Series 1998 on June 25, 1998. The Series 1998 Notes were paid from investment and interest earnings on CWSRF accounts and repayments on the Guymon and Ketchum State Loan Program Bond loans.
- 10 OWRB issued its \$2,300,000 CWSRF Revenue Notes, Series 1999 on February 15, 1999. The Series 1999 Notes were paid from investment and interest earnings on CWSRF accounts and repayments on the Guymon and Ketchum State Loan Program Bond loans.
- 11 OWRB issued its \$2,300,000 CWSRF Revenue Notes, Series 2000 on June 22, 2000. The Series 2000 Notes were paid from investment and interest earnings on CWSRF accounts and repayments on the Guymon and Ketchum State Loan Program Bond loans.
- 12 OWRB issued its \$4,345,000 CWSRF Revenue Notes, Series 2001 on April 11, 2001. The Series 2001 Notes were paid from investment and interest earnings on CWSRF accounts. \$2,149,349.40 went toward meeting the FY 2001 state match and \$2,154,141.00 went toward meeting the FY 2002 state match.
- 13 OWRB issued a \$28,890,000 CWSRF Interim Construction Loan Revenue Bonds, Series 2001, on August 15, 2001. The Series 2001 Bonds are to be paid from principal and interest payments made on CWSRF loans made from bond proceeds.
- 14 OWRB issued a \$204,480,000 CWSRF/DWSRF Interim Construction Loan Revenue Bonds, Series 2004, on October 26, 2004. The Series 2004 Bonds are to be paid from principal and interest payments made on CWSRF loans made from bond proceeds. Match for 2003, 2004, 2005, 2006 with \$67,760 left.
- 15 Reallocation of bond funds from the 2004 Bond Issue to state matching funds - \$3,908,100 for the 2007, 2008 and 2009 cap grants.
- 16 OWRB issued a \$85,000,000 Revenue Bond Issue, Series 2011 on April 13, 2011 with \$6,492,200 for the 2010 and 2011 cap grants and a portion of the 2012 cap grant. \$814,000 for the 2012 state match will be available from the 2011 bond issue the remainder will need to come from another source.
- 17 OWRB issued a \$86,505,000 Revenue Bond Issue, Series 2012B on November 7, 2012 with \$2,047,000 for the remainder of the 2012 cap grant. The state match for the 2013 cap grant was provided with a reallocation of the 2012B bond proceeds of \$1,500,000 and excess match funds from 2006 of \$67,760 and excess match funds from 2012B Bonds of \$577,200, and \$12,240 from an appropriation from the Water Infrastructure Development Fund.
- 18 Reallocation of bond funds from the 2012B Bond Issue to state matching funds.
- 19 OWRB issued a \$100,620,000 Revenue Bond Issue, Series 2015 on December 17, 2015 providing state match in the amount of \$4,537,600 for the 2015 and 2016 cap grants. The anticipated 2017 cap grant will be matched with excess match funds and reallocated bond proceeds from the Series 2015 Bond Issue.
- 20 Reallocation of bond funds from the 2015 Bond Issue to state matching funds - approved at November 1, 2017 Board Meeting.
- 21 Reallocation of bond funds from the 2015 Bond Issue to state matching funds - approved at September 2018 Board Meeting.
- 22 Transfer from CW Administration Fund - may be reimbursed with bond proceeds.
- 23 OWRB issued a \$100,000,000 Revenue Bond Issue, Series 2020A on December 17, 2020 providing state match in the amount of \$5,067,600 for the 2020 cap grant and \$2,500,000 from the 2021 cap grant. And \$67,400 was transferred from the CW Admin account for the remainder of the 2021 state match.
- 24 Transferred \$1,437,900 for the 2022 BIL Supplemental match, \$1,869,800 for the 2022 match and \$117,000 for the 2023 match from the CW Administration Fund. These funds were reimbursed in February 2023 with State Match proceeds from the 2023 CWSRF \$150,000,000 Bond Issue. The remaining \$4,075,300 will be used for the 2023 Base and 2023 BIL Supplemental matches.

LIST OF ACRONYMS

AIS	American Iron and Steel
BABA	Build America, Buy America
BIL	Bipartisan Infrastructure Law
BMPs	Best Management Practices
CATEX	Categorical Exclusion
CBR	CWSRF Benefits Reporting
CWA	Clean Water Act
CWSRF	Clean Water State Revolving Fund
DB	Davis Bacon (Act)
DCR	Debt Coverage Ratio
DUNS	Data Universal Numbering System
DWSRF	Drinking Water State Revolving Fund
EA	Environmental Assessment
EIS	Environmental Impact Statement
EPA	Environmental Protection Agency
ER	Engineering Report
FACT	Funding Agency Coordinating Team
FFATA	Federal Funding Accountability and Transparency Act
FFY	Federal Fiscal Year
FONSI	Finding of No Significant Impact
FSP	Fiscal Sustainability Plan
FWPCA	Federal Water Pollution Control Act
GIS	Geographic Information Systems
GPR	Green Project Reserve
GPS	Global Positioning System
IIJA	Infrastructure Investment and Jobs Act
IUP	Intended Use Plan
MMD	Municipal Market Daily
NEPA	National Environmental Policy Act
NIMS	National Information Management System
NMP	National Municipal Policy
NPDES	National Pollutant Discharge Elimination System
NPS	Non-Point Source
OASIS	Oklahoma Advantages Assessment and Scoring for Infrastructure Solutions
OCC	Oklahoma Conservation Commission
OCWP	Oklahoma Comprehensive Water Plan
ODEQ	Oklahoma Department of Environmental Quality
OMB	Office of Management and Budget
ORWA	Oklahoma Rural Water Association
OS	Oklahoma Statutes
OWQS	Oklahoma Water Quality Standards
PPL	Project Priority List
POTW	Publicly Owned Treatment Works
SDWA	Safe Drinking Water Act
SFY	State Fiscal Year
SRF	State Revolving Fund
TIPRA	Tax Increase Prevention and Revitalization Act of 2005



Thank you to those who provided input and effort into
the creation of this publication.

Published by the Financial Assistance Division of the
Oklahoma Water Resources Board
3800 North Classen Boulevard
Oklahoma City, Oklahoma 73118

fad@owrb.ok.gov

**APPENDIX A:
OKLAHOMA'S CWSRF SFY 2025 FUNDABLE PPL**

STATE OF OKLAHOMA
Clean Water State Revolving Fund Project Priority List
Effective July 1, 2024 - June 30, 2025
SFY 2025 Fundable Projects

Ranking Points	Pop	OPDES Permit #	Tier	Loan Type	Entity Name	Loan Number	Est. Loan Amount	GPR	GPR Type	CO or NOV	Project Description
575	11,402	OK0045888, OK0028134	1	BIL/Base	Okmulgee Municipal Authority	ORF-23-0012-CW	\$325,500.00	\$0.00			P&D WWTP Improvements
565	163	OK0034347	1	BIL/Base	Boynton Public Works Authority	ORF-23-0171-CW	\$1,295,000.00	\$0.00		Y	WWTP Project
555	1,511	OK0100731	2	BIL/Base	Minco Municipal Authority	ORF-24-0009-CW	\$1,010,000.00	\$0.00			Sewer System Improvements
555	1,437	ND	2	BIL/Base	Cherokee Development Authority	ORF-25-0014-CW	\$632,500.00	\$0.00		Y	P&D wastewater treatment facility improvements
545	3,302	OK0022802	2	BIL/Base	Mannford Public Works Authority	ORF-24-0049-CW	\$191,550.00	\$0.00		Y	P&D Satellite System Connection Project
545	1,920	OK0028282	1	BIL/Base	Wynnewood Utilities Authority	ORF-25-0006-CW	\$1,500,000.00	\$0.00			Planning and Design WWTP Evaluation
545	1,829	ND	1	BIL/Base	Arkoma Municipal Authority	ORF-24-0008-CW	\$400,000.00	\$0.00			P&D related to Wastewater System Improvements
545	1,749	OKG580015	1	BIL/Base	Hollis Public Works Authority	ORF-24-0021-CW	\$350,000.00	\$0.00			Planning & Design Sewer System Improvements
545	1,349	RW21-013	1	BIL/Base	Crescent Public Works Authority	ORF-24-0011-CW	\$332,500.00	\$0.00			P & D Sewer Collection Improvements
545	654	ND	1	BIL/Base	Arapaho Public Works Authority	ORF-25-0018-CW	\$285,000.00	\$0.00			P&D SS Improvements
545	360	ND	1	BIL/Base	Custer City Public Works Authority	ORF-24-0012-CW	\$999,999.00	\$0.00			Sewer Collection Improvements
545	129	OK0020273	2	BIL/Base	Fairmont Public Works Authority	ORF-22-0019-CW	\$221,500.00	\$0.00			P & D lagoon and stormwater issues
535	18,560	OK0100382	2	BIL/Base	El Reno Municipal Authority	ORF-24-0001-CW	\$1,500,000.00	\$0.00			P & D Stormwater Infrastructure Projects
535	5,625	OK0002551, OK0028266	1	BIL/Base	Henryetta Municipal Authority	ORF-23-0057-CW	\$999,999.00	\$0.00			Wastewater Collection System and Wastewater Treatm
535	3,342	OK0028649	1	BIL/Base	Hobart Public Works Authority	ORF-25-0011-CW	\$1,500,000.00	\$1,500,000.00	WE/EE		AMR/AMI
535	1,939	OK0026654	1	BIL/Base	Pawnee Public Works Authority	ORF-25-0015-CW	\$402,500.00	\$0.00			P&D Sewer System Improvements
535	1,176	ND	1	BIL/Base	Geronimo Public Works Authority	ORF-25-0010-CW	\$1,500,000.00	\$0.00			Sanitary Sewer Main Replacements
535	468	ND	1	BIL/Base	Covington Utilities Authority	ORF-24-0020-CW	\$876,989.66	\$0.00			2023 Sanitary Sewer Main Replacements
525	10,371	RW18-001, RWID21-007	2	BIL/Base	Warr Acres Public Works Authority	ORF-25-0026-CW	\$1,500,000.00	\$0.00		Y	SSES and Design for Collection System
525	1,243	ND	1	BIL/Base	Snyder Public Works Authority	ORF-23-0132-CW	\$594,100.00	\$0.00			Water Meter Replacement
525	355	ND	2	BIL/Base	Coyle Public Works Authority	ORF-25-0023-CW	\$392,500.00	\$0.00			P&D of Sewer Collection system
515	4,462	OK0027448	2	BIL/Base	Perry Municipal Authority	ORF-25-0016-CW	\$427,500.00	\$0.00			P&D Sewer System Improvements
485	611	OK0039128	1	BIL/Base	Langley Public Works Authority	ORF-22-0003-CW	\$682,500.00	\$0.00		Y	I & I Correction
475	271	OK0020796	1	BIL/Base	Delaware Public Works Authority	ORF-22-0012-CW	\$350,000.00	\$0.00		Y	P & D Delaware Sanitary Sewer Line Replacement Project

Ranking Points	Pop	OPDES Permit #	Tier	Loan Type	Entity Name	Loan Number	Est. Loan Amount	GPR	GPR Type	CO or NOV	Project Description
465	1,117	OK0033464	1	BIL/Base	Sperry Utilities Services Authority	ORF-25-0025-CW	\$1,500,000.00	\$0.00		Y	WW System Improvements PH 1
465	280	ND	1	BIL/Base	Lenapah Public Works Authority	ORF-22-0011-CW	\$50,000.00	\$0.00		Y	P&D Lenapah Lift Station and Lagoons Improvements
445	4,244	OK0021522	1	BIL/Base	Broken Bow Public Works Authority	ORF-25-0027-CW	\$1,500,000.00	\$0.00			Collection System Improvements
435	8,540	OK0028169	1	BIL/Base	Sallisaw Municipal Authority	ORF-25-0017-CW	\$1,500,000.00	\$1,500,000.00	WE/EE		AMRs
435	3,064	OK0022659	1	BIL/Base	Wewoka Public Works Authority	ORF-25-0028-CW	\$1,500,000.00	\$0.00			Collection System Rehab
435	1,052	ND	1	BIL/Base	Caddo Public Works Authority	ORF-25-0021-CW	\$1,500,000.00	\$0.00		Y	WW System Improvements
435	230	OK0044563	1	BIL/Base	Soper Public Works Authority	ORF-19-0011-CW	\$15,450.00	\$0.00			Planning & Design Lift station replacement
425	363	ND	2	BIL/Base	Lone Wolf Public Works Authority	ORF-24-0027-CW	\$999,999.00	\$0.00			Sewer System Improvements
415	5,134	OK0034267	2	BIL/Base	Lone Grove Water & Sewer Trust Authority	ORF-25-0009-CW	\$248,337.00	\$0.00			P&D Wastewater project
415	3,200	OK0028577	2	BIL/Base	Atoka Municipal Authority	ORF-25-0022-CW	\$1,500,000.00	\$0.00			Collection system improvements
415	736	OK0027917	2	BIL/Base	Adair Municipal Authority	ORF-22-0032-CW	\$525,000.00	\$0.00			P&D Sewer System Rehab
365	1,993	OK0022781	1	BIL/Base	Authority	ORF-22-0004-CW	\$1,633,750.00	\$0.00		Y	Wastewater Treatment Lagoon System
355	721	OK0020168	2	BIL/Base	Copan Public Works Authority	ORF-22-0017-CW	\$480,000.00	\$0.00		Y	Sewer System Rehab Ph II
355	187	OK0028495	1	BIL/Base	Ames Public Works Authority	ORF-23-0169-CW	\$101,035.00	\$101,035.00	WE/EE		Auto Read Meters
355	145	ND	1	BIL/Base	Canadian Public Works Authority	ORF-21-0004-CW	\$199,100.00	\$0.00			Planning and design for sewer system improvements
345	57,950	OK0026841	3	BIL/Base	Midwest City Municipal Authority	ORF-24-0031-CW	\$2,000,000.00	\$0.00			Midwest City Master Planning Project
345	3,245	ND	1	BIL/Base	Perkins Public Works Authority	ORF-22-0031-CW	\$400,000.00	\$0.00			P & D WWTS Improvements
345	3,200	OK0028576	2	BIL/Base	Atoka Municipal Authority	ORF-23-0059-CW	\$10,522,232.00	\$0.00		Y	Atoka Wastewater Treatment Plant Improvements
345	1,387	OK0022772	1	BIL/Base	Locust Grove Public Works Authority	ORF-22-0020-CW	\$275,000.00	\$0.00			P & D Collection System Improvements
345	647	ND	1	BIL/Base	Wayne Public Works Authority	ORF-23-0054-CW	\$52,500.00	\$0.00			P&D for lift station rehab/replacement
345	501	ND	1	BIL/Base	Fort Cobb Public Works Authority	ORF-23-0161-CW	\$480,554.00	\$480,554.00	WE/EE		AMI Smart Meter Installation
345	286	ND	1	BIL/Base	Jennings Public Works Authority	ORF-22-0023-CW	\$116,174.00	\$0.00			P & D lagoon rehab
345	192	ND	1	BIL/Base	Meno Public Works Authority	ORF-24-0006-CW	\$1,000,000.00	\$0.00			P&D Wastewater line upgrade and lift station
335	3,286	OK1021306, OK0043443	1	BIL/Base	Hominy Public Works Authority	ORF-22-0076-CW	\$108,000.00	\$0.00			Hominy Flood Study
335	3,286	OK1021306, OK0043443	1	BIL/Base	Hominy Public Works Authority	ORF-24-0030-CW	\$500,000.00	\$0.00			Stormwater Mitigation
335	3,074	OK0028100	1	BIL/Base	Checotah Public Works Authority	ORF-24-0010-CW	\$1,000,000.00	\$0.00			Sewer Lift Station Rehabilitation
335	3,064	OK0022659	1	BIL/Base	Wewoka Public Works Authority	ORF-23-0072-CW	\$346,560.00	\$0.00			P & D Sewer Collection Rehabilitation
335	3,010	OK0020737	1	BIL/Base	Okemah Utilities Authority	ORF-25-0020-CW	\$1,500,000.00	\$0.00			WW System Improvements
335	2,788	OK0028827	1	BIL/Base	Mangum Utility Authority	ORF-24-0047-CW	\$877,338.50	\$877,338.50	WE/EE		P & D for Sewer System Improvments

Ranking Points	Pop	OPDES Permit #	Tier	Loan Type	Entity Name	Loan Number	Est. Loan Amount	GPR	GPR Type	CO or NOV	Project Description
335	1,394	OK0036763, OKG580053	1	BIL/Base	Comanche Public Works Authority	ORF-22-0060-CW	\$2,500,000.00	\$0.00			Cow Creek Lift Station
335	1,312	OK0028924	1	BIL/Base	Morris Public Works Authority	ORF-24-0041-CW	\$500,000.00	\$0.00			P&D for Sewer Lagoons
335	898	OK0028185	3	BIL/Base	Hydro Development Authority	ORF-23-0149-CW	\$1,500,000.00	\$0.00			Wastewater Total Retention
335	854	OKG580009	1	BIL/Base	Quinton Public Works Authority	ORF-20-0006-CW	\$454,700.00	\$0.00			P&D WWTP Improvements
335	760	OK0027537	1	BIL/Base	Dewar Public Works Authority	ORF-24-0025-CW	\$200,000.00	\$0.00			Sewer Main Replacements - Planning and Design
335	631	ND	1	BIL/Base	Roff Public Works Authority	ORF-21-0021-CW	\$100,000.00	\$0.00			Lift Station Planning & Design
335	307	ND	1	BIL/Base	Wakita Utilities Authority	ORF-23-0143-CW	\$124,048.00	\$0.00			Force Main Replacement
330	20,447	RW18-001, RWID21-007	2	BIL/Base	Bethany Public Works Authority	ORF-24-0046-CW	\$1,360,000.00	\$0.00			2023 Sanitary Sewer Improvements
325	91,542	OK0035246	2	BIL/Base	Lawton Water Authority	ORF-25-0031-CW	\$1,500,000.00	\$0.00			Sewerline improvements
325	24,340	OK0026069	2	BIL/Base	Ponca City Utilities Authority	ORF-25-0033-CW	\$1,500,000.00	\$0.00			P&D Osage Sanitary Sewer Rehab
325	11,290	OK0029084, RW21-009, RWID19-004	2	BIL/Base	Elk City Public Works Authority	ORF-24-0022-CW	\$1,000,000.00	\$0.00			Sanitary Sewer Main Replacements
325	4,893	ND	2	BIL/Base	Hinton Public Works Authority	ORF-22-0025-CW	\$289,284.00	\$0.00			P & D for WW collection system improvements
325	3,217	OK0028347	2	BIL/Base	Cleveland Municipal Authority	ORF-23-0060-CW	\$263,917.50	\$0.00			SSES Study
325	3,064	OK0022659	1	BIL/Base	Wewoka Public Works Authority	ORF-22-0034-CW	\$85,000.00	\$0.00			Dam shoreline & stabilization eng study
325	1,437	ND	2	BIL/Base	Cherokee Development Authority	ORF-24-0026-CW	\$1,000,000.00	\$0.00			Sewer System Improvements
325	1,123	OK0038971	2	BIL/Base	The Thomas Public Works Authority	ORF-25-0004-CW	\$200,000.00	\$0.00			Sewer Main Replacement HWY 47
315	198	OK0022560	2	BIL/Base	Hardesty Municipal Authority	ORF-23-0162-CW	\$150,000.00	\$0.00			Planning & Design Lagoon and Sewer System
305	57,950	OK0026841	3	BIL/Base	Midwest City Municipal Authority	ORF-25-0032-CW	\$1,500,000.00	\$0.00			P&D Sanitary Sewer Lines
305	3,012	OK0030996	3	BIL/Base	Jones Public Works Authority	ORF-19-0006-CW	\$71,800.00	\$0.00			P&D System Improvements
305	3,012	OK0030996	3	BIL/Base	Jones Public Works Authority	ORF-22-0068-CW	\$161,550.00	\$0.00			Evaluation and Design for the Town of Jones Drainage
305	2,453	ND	3	BIL/Base	Taneha Utilities Authority	ORF-22-0024-CW	\$120,000.00	\$0.00			P & D I/I and manhole rehab
275	709	OK0028843	1	BIL/Base	Haileyville Public Works Authority	ORF-23-0098-CW	\$298,000.00	\$0.00			Wastewater System Improvements
275	352	ND	1	BIL/Base	Bowlegs Public Works Authority	ORF-25-0034-CW	\$1,500,000.00	\$0.00			Sewer Project Lagoon Repair
275	314	ND	1	BIL/Base	Eldorado Public Works Authority	ORF-25-0024-CW	\$453,228.02	\$0.00		Y	WW System Improvements
265	729	OK0020311	2	BIL/Base	Mountain View Public Works Authority	ORF-24-0039-CW	\$1,333,333.00	\$0.00			Sewer System Improvements - Lagoons / Sewer Line
265	584	ND	1	BIL/Base	Corn Public Works Authority Trust	ORF-18-0003-CW	\$2,000,000.00	\$0.00		Y	Replace existing wastewater treatment facility
265	180	OK0027782	1	BIL/Base	Pittsburg Public Works Authority	ORF-23-0165-CW	\$212,560.00	\$0.00			Sewer Collection Rehabilitation

Ranking Points	Pop	OPDES Permit #	Tier	Loan Type	Entity Name	Loan Number	Est. Loan Amount	GPR	GPR Type	CO or NOV	Project Description
255	96,286	OK1020723	4	BIL/Base	Edmond Public Works Authority	ORF-22-0037-CW	\$10,000,000.00	\$0.00			Spring Creek Interceptor Improvements
255	96,286	OK1020723	4	BIL/Base	Edmond Public Works Authority	ORF-23-0097-CW	\$15,000,000.00	\$0.00			Chisholm Creek Force Main Replacement
255	3,217	OK0100315, OK0028347	2	BIL/Base	Cleveland Municipal Authority	ORF-23-0016-CW	\$250,000.00	\$0.00		Y	Wastewater Plant Upgrade
250	8,132	OK0046035, OK0026832	1	BIL/Base	Wagoner Public Works Authority	ORF-23-0115-CW	\$1,000,000.00	\$0.00			Wastewater Treatment Improvements
250	472	ND	1	BIL/Base	Calumet Public Works Authority	ORF-23-0022-CW	\$1,500,000.00	\$0.00			lagoon rehab
245	117,911	OK0040053, RW20-031, RWID20-008	4	BIL/Base	Broken Arrow Municipal Authority	ORF-24-0018-CW	\$3,300,000.00	\$0.00			Innovation District Sanitary Sewer Improvements
245	117,911	OK0040053, RW20-031, RWID20-008	4	BIL/Base	Broken Arrow Municipal Authority	ORF-23-0123-CW	\$1,800,000.00	\$0.00			Bentree Lift Station and Force Main
245	7,215	OK0028886	4	BIL/Base	The Grove Municipal Services Authority	ORF-24-0058-CW	\$1,000,000.00	\$0.00			Install a Screw Press and Lime Stabilization
245	5,916	OK0028428	1	BIL/Base	Holdenville Public Works Authority	ORF-24-0016-CW	\$1,000,000.00	\$0.00			Holdenville Sewer System Improvements Project
245	5,531	OK0028151	1	BIL/Base	Anadarko Public Works Authority	ORF-23-0139-CW	\$900,000.00	\$0.00			Anadarko Wastewater Treatment Plant
245	5,531	OK0028151	1	BIL/Base	Anadarko Public Works Authority	ORF-23-0159-CW	\$300,000.00	\$0.00		Y	City Of Anadarko Storm Drain
245	4,951	OK0020141	3	BIL/Base	Sulphur Municipal Authority	ORF-23-0120-CW	\$350,400.00	\$0.00			WW Treatment Plant upgrades
245	4,244	OKG380009, OK0021521	1	BIL/Base	Broken Bow Public Works Authority	ORF-23-0011-CW	\$5,000,000.00	\$0.00			BBPWA Wastewater Plant Expansion
245	3,254	ND	1	BIL/Base	Perkins Public Works Authority	ORF-25-0008-CW	\$750,000.00	\$0.00			UV System and Enclosure Upgrade
245	2,805	OK0035611	1	BIL/Base	Eufaula Public Works Authority	ORF-23-0065-CW	\$8,200,000.00	\$0.00			Eufaula Sewer System Improvements
245	2,541	OK0038318, OK0022501	4	BIL/Base	Drumright Utility Trust	ORF-23-0009-CW	\$700,000.00	\$0.00			Sewer Line Replacement
245	2,452	OK0031976	1	BIL/Base	Jay Utilities Authority	ORF-23-0073-CW	\$1,000,000.00	\$0.00			Wastewater Treatment Plant Improvements
245	2,322	OK0100358, OK0021881	1	BIL/Base	Wilburton Public Works Authority	ORF-23-0126-CW	\$260,200.00	\$0.00			Sewer System Improvements
245	2,272	OK0020320	1	BIL/Base	Commerce Development Authority	ORF-24-0003-CW	\$580,000.00	\$580,000.00	WE/EE		AMR Water System
245	1,829	ND	1	BIL/Base	Arkoma Municipal Authority	ORF-22-0033-CW	\$325,000.00	\$325,000.00	WE/EE		AMR/AMI
245	1,387	OK0022772	1	BIL/Base	Locust Grove Public Works Authority	ORF-24-0033-CW	\$5,126,000.00	\$0.00			Collection system I/I mitigation
245	1,132	OK0032417	1	BIL/Base	Wetumka Municipal Authority	ORF-23-0108-CW	\$1,000,000.00	\$0.00			Wastewater Lagoon Improvements
245	1,132	OK0032417	1	BIL/Base	Wetumka Municipal Authority	ORF-23-0109-CW	\$200,000.00	\$0.00			WTP Backwash Lagoon Improvements
245	1,082	OKG380035	1	BIL/Base	Maysville Municipal Authority	ORF-23-0038-CW	\$500,000.00	\$0.00			Wastewater System Improvements
245	1,012	OK0026883	1	BIL/Base	Meeker Public Works Authority	ORF-23-0004-CW	\$1,504,271.00	\$0.00			Sanitary Sewer collection

Ranking Points	Pop	OPDES Permit #	Tier	Loan Type	Entity Name	Loan Number	Est. Loan Amount	GPR	GPR Type	CO or NOV	Project Description
245	1,012	OK0026883	1	BIL/Base	Meeker Public Works Authority	ORF-23-0044-CW	\$500,000.00	\$0.00			Wastewater Collection System Improvements
245	1,005	ND	1	BIL/Base	Apache Public Works Authority	ORF-23-0113-CW	\$550,000.00	\$0.00			Remediation and repair of 3rd cell lagoon
245	1,004	ND	1	BIL/Base	Apache Public Works Authority	ORF-23-0114-CW	\$290,000.00	\$290,000.00	WE/EE		Smart Meters
245	995	ND	1	BIL/Base	Buffalo Public Works Authority	ORF-23-0094-CW	\$1,200,000.00	\$0.00			Buffalo Wastewater Project
245	801	OK0020206	1	BIL/Base	Allen Public Works Authority	ORF-21-0006-CW	\$38,070.00	\$38,070.00	WE/EE		AMR's and sewer collection
245	703	ND	1	BIL/Base	Waynoka Utilities Authority	ORF-23-0136-CW	\$1,200,000.00	\$0.00			Wastewater Treatment Plant Improvements
245	512	OKG580049	1	BIL/Base	Verden Public Works Authority	ORF-23-0089-CW	\$18,000.00	\$0.00			Replace Valves
245	512	OKG580049	1	BIL/Base	Verden Public Works Authority	ORF-23-0090-CW	\$200,000.00	\$0.00			Wastewater repair
245	491	ND	1	BIL/Base	Alex Municipal Authority	ORF-23-0010-CW	\$1,000,000.00	\$0.00			Sewer Infrastructure
245	419	OK0027766	1	BIL/Base	Cement Public Works Authority	ORF-23-0150-CW	\$2,000,000.00	\$0.00			Wastewater System Improvements
245	419	OK0027766	1	BIL/Base	Cement Public Works Authority	ORF-23-0131-CW	\$591,500.00	\$0.00			Sewer System Improvements
245	337	ND	1	BIL/Base	Authority	ORF-23-0056-CW	\$500,000.00	\$0.00			Sewer Lift Station and Collection Improvements
245	312	OK0037818	1	BIL/Base	Calvin Public Works Authority	ORF-23-0018-CW	\$150,000.00	\$0.00			Lagoon Riprap
245	296	OKG580014	1	BIL/Base	Mill Creek Public Works Authority	ORF-23-0144-CW	\$60,000.00	\$0.00			Sewer Lagoon E.coli Mitigation Project
245	120	ND	1	BIL/Base	Bromide Public Works Authority	ORF-23-0027-CW	\$550,000.00	\$0.00			Bromide Land Application System
245	92	OK0022578	1	BIL/Base	Town of Devol	ORF-23-0125-CW	\$100,000.00	\$0.00			Replace manholes
240	5,221	OK0028487	1	BIL/Base	Hugo Municipal Authority	ORF-23-0035-CW	\$370,190.00	\$0.00			Sewer Line Rehab
240	3,565	OK0025470	1	BIL/Base	Nowata Municipal Authority	ORF-23-0127-CW	\$950,000.00	\$950,000.00	WE/EE		Automated Meter Infrastructure (AMI) System
235	36,738	OK0045705, OK0029131	1	BIL/Base	Muskogee Municipal Authority	ORF-23-0050-CW	\$2,167,440.00	\$0.00			Wastewater treatment plant Phase 2
235	36,738	OK0045705, OK0029131	1	BIL/Base	Muskogee Municipal Authority	ORF-23-0051-CW	\$1,080,000.00	\$0.00			Sludge Dewatering System
235	18,560	OK0100382	2	BIL/Base	El Reno Municipal Authority	ORF-24-0013-CW	\$1,000,000.00	\$0.00			Sewer Collection Improvements
235	18,560	OK0100382	2	BIL/Base	El Reno Municipal Authority	ORF-24-0048-CW	\$287,500.00	\$0.00			Sewage Lift Station Telemetry System
235	3,013	OK0031682	3	BIL/Base	Calera Public Works Authority	ORF-22-0007-CW	\$688,000.00	\$0.00			WWTP Improvements
235	2,934	OK0028274	1	BIL/Base	Pawhuska Public Works Authority	ORF-23-0062-CW	\$450,000.00	\$450,000.00	WE/EE		Pawhuska AMI System
235	1,686	OKG580028	1	BIL/Base	Coalgate Public Works Authority	ORF-23-0029-CW	\$200,000.00	\$0.00			Sewer Collection Improvements
235	1,284	OK0031054	1	BIL/Base	Panama Public Works Authority	ORF-23-0105-CW	\$272,450.00	\$0.00			Sewer System Improvements
235	1,132	OK0032417	1	BIL/Base	Wetumka Municipal Authority	ORF-22-0030-CW	\$36,130.00	\$36,130.00	WE/EE		AMR
235	1,015	OK0027308	1	BIL/Base	Barnsdall Public Works Authority	ORF-23-0103-CW	\$650,000.00	\$0.00			Bird Creek Lift Station Upgrade
235	960	OK0022888	1	BIL/Base	Mounds Public Works Authority	ORF-23-0087-CW	\$200,000.00	\$0.00			Public Works Sewer Lines Rehabilitation
235	914	RW21-017	1	BIL/Base	Grandfield Public Works Authority	ORF-24-0029-CW	\$800,000.00	\$0.00			Waste Water Treatment Plant Improvements
235	864	OK0029181	1	BIL/Base	Maud Municipal Authority	ORF-23-0070-CW	\$743,090.00	\$0.00			P & D Wastewater Treatment Improvements

Ranking Points	Pop	OPDES Permit #	Tier	Loan Type	Entity Name	Loan Number	Est. Loan Amount	GPR	GPR Type	CO or NOV	Project Description
235	739	ND	1	BIL/Base	Elmore City Public Works Authority	ORF-23-0061-CW	\$10,000,000.00	\$0.00			Wastewater collection and treatment rehabilitation
235	689	OK0020117	1	BIL/Base	Authority	ORF-22-0036-CW	\$603,200.00	\$0.00			Sewer System Rehab
235	538	OK0031631	1	BIL/Base	Red Oak Public Works Authority	ORF-23-0137-CW	\$750,000.00	\$0.00			Sewer System Improvements
235	507	ND	1	BIL/Base	Glencoe Public Works Authority	ORF-21-0013-CW	\$610,000.00	\$0.00			WWTS to Wellington Addition
235	492	OK0032328	1	BIL/Base	Hulbert Public Works Authority	ORF-25-0007-CW	\$220,000.00	\$0.00			Lift Station Improvement
235	418	ND	1	BIL/Base	Foyil Economic Development	ORF-23-0140-CW	\$500,000.00	\$0.00			FEDA West Lagoon
235	414	OK0027286	1	BIL/Base	Stonewall Public Works Authority	ORF-23-0082-CW	\$1,600,000.00	\$0.00			Wastewater Collection System Replacement
235	313	ND	2	BIL/Base	Fort Supply Public Works Authority	ORF-23-0119-CW	\$2,424,550.00	\$0.00			Sewer Project
235	310	ND	1	BIL/Base	Bennington Public Works Authority	ORF-21-0024-CW	\$1,900,000.00	\$0.00			Sewer collection system rehabilitation
235	274	ND	1	BIL/Base	Lehigh Development Authority	ORF-23-0110-CW	\$600,000.00	\$0.00			Sewer Lift Station and Collection Improvements
235	200	ND	1	BIL/Base	Breckinridge Public Works Authority	ORF-24-0038-CW	\$465,300.50	\$0.00			Wastewater Lagoon Improvements - South Cell
235	184	ND	1	BIL/Base	Marble City Public Works Authority	ORF-22-0069-CW	\$1,500,000.00	\$0.00			Wastewater System Improvements
235	171	OK0031577	1	BIL/Base	Big Cabin Public Works Authority	ORF-23-0048-CW	\$500,000.00	\$0.00			Collection System Improvements SSES
235	164	ND	1	BIL/Base	Town of Braman	ORF-24-0042-CW	\$28,000.00	\$0.00			Purchase Lagoon Aerators
235	160	ND	1	BIL/Base	Town of Martha	ORF-23-0133-CW	\$5,000.00	\$0.00			Waste water lift station repair /upgrade
235	132	ND	1	BIL/Base	Orlando Public Works Authority	ORF-22-0005-CW	\$678,000.00	\$0.00			Phase II sewer line replacement
230	20,447	RW18-001, RWID21-007	2	BIL/Base	Bethany Public Works Authority	ORF-23-0017-CW	\$2,500,000.00	\$2,500,000.00	WE/EE		Replace existing water meters with AMRs
230	20,447	RW18-001, RWID21-007	2	BIL/Base	Bethany Public Works Authority	ORF-23-0015-CW	\$605,000.00	\$0.00			Replace Lift Station at 25th and Shannon
230	20,447	RW18-001, RWID21-007	2	BIL/Base	Bethany Public Works Authority	ORF-23-0014-CW	\$585,000.00	\$0.00			Replace 31st and Peniel Lift Station
225	24,340	OK0026069	2	BIL/Base	Ponca City Utilities Authority	ORF-23-0076-CW	\$3,500,000.00	\$0.00			Ponca City Bois D'Arc Wastewater Interceptor Rehab
225	11,290	OK0029084, RW21-009, RWID19-004	2	BIL/Base	Elk City Public Works Authority	ORF-23-0020-CW	\$160,000.00	\$0.00			Gray Water Reuse
225	11,290	OK0029084, RW21-009, RWID19-004	2	BIL/Base	Elk City Public Works Authority	ORF-23-0019-CW	\$150,000.00	\$0.00			Headworks Rehab
225	11,290	OK0029084, RW21-009, RWID19-004	2	BIL/Base	Elk City Public Works Authority	ORF-23-0099-CW	\$650,000.00	\$650,000.00	WE/EE		Water Meter replacement Radio Read
225	7,439	OK0027090	4	BIL/Base	Catoosa Public Works Authority	ORF-23-0135-CW	\$480,400.00	\$0.00			System Wide I/I Study

Ranking Points	Pop	OPDES Permit #	Tier	Loan Type	Entity Name	Loan Number	Est. Loan Amount	GPR	GPR Type	CO or NOV	Project Description
225	6,026	RW21-007	2	BIL/Base	Pauls Valley Municipal Authority	ORF-23-0063-CW	\$709,005.00	\$0.00			Wastewater Collection System Rehabilitation
225	4,765	RW20-018	1	BIL/Base	Sayre Public Works Authority	ORF-24-0019-CW	\$802,695.25	\$802,695.25	WE/EE		AMR Project
225	3,905	OK0022535	2	BIL/Base	Spencer Utilities Authority	ORF-23-0154-CW	\$250,000.00	\$0.00			Liberty Lift Station
225	3,905	OK0022535	2	BIL/Base	Spencer Utilities Authority	ORF-23-0155-CW	\$100,000.00	\$0.00			Blower System Improvements
225	3,905	OK0022535	2	BIL/Base	Spencer Utilities Authority	ORF-23-0156-CW	\$300,000.00	\$0.00			RAS System Improvement
225	3,905	OK0022535	2	BIL/Base	Spencer Utilities Authority	ORF-23-0157-CW	\$375,000.00	\$0.00			Emergency Sewer Repair
225	2,809	OK0027367, OK0027359	2	BIL/Base	Stroud Utilities Authority	ORF-23-0092-CW	\$235,000.00	\$0.00			Ford Heights
225	2,295	ND	2	BIL/Base	Nicoma Park Development Authority	ORF-23-0040-CW	\$800,000.00	\$0.00			WW Improvement 23rd & Hiwassee Rd
225	1,249	ND	2	BIL/Base	Fletcher Public Works Authority	ORF-23-0086-CW	\$350,000.00	\$0.00			Irr system and dikes
225	1,153	OK0020702	4	BIL/Base	Okarche Public Works Authority	ORF-23-0158-CW	\$118,000.00	\$0.00			Okarche Sanitary Sewer Evaluation Survey
225	864	ND	2	BIL/Base	Seiling Public Works Authority	ORF-23-0084-CW	\$450,000.00	\$0.00			Seiling Business Park
225	688	OK0032476	2	BIL/Base	Wellston Public Works Authority	ORF-23-0106-CW	\$1,000,000.00	\$0.00			Multiple Sewer Projects
215	18,108	OK0046043, OK0026107, OK0026093	2	BIL/Base	McAlester Public Works Authority	ORF-23-0025-CW	\$993,600.00	\$0.00			Wastewater Collection System Improvements
215	18,108	OK0046043, OK0026107, OK0026093	2	BIL/Base	McAlester Public Works Authority	ORF-23-0042-CW	\$7,110,686.00	\$0.00			East Wastewater Treatment Plant Improvements
215	18,108	OK0046043, OK0026107, OK0026093	2	BIL/Base	McAlester Public Works Authority	ORF-23-0043-CW	\$7,007,118.00	\$0.00			West Wastewater Treatment Plant Improvements
215	18,108	OK0046043, OK0026107, OK0026093	2	BIL/Base	McAlester Public Works Authority	ORF-23-0049-CW	\$26,916,450.00	\$0.00			McAlester Stormwater Improvements
215	9,566	OK0040479	2	BIL/Base	Pryor Municipal Utility Board	ORF-23-0151-CW	\$2,000,000.00	\$0.00			9th Street Lift Station Improvements
215	8,959	OK0021610	2	BIL/Base	Poteau Public Works Authority	ORF-23-0130-CW	\$5,000,000.00	\$0.00			City of Poteau East Interceptor Sanitary Sewer
215	6,026	RW21-007	2	BIL/Base	Pauls Valley Municipal Authority	ORF-23-0168-CW	\$204,549.78	\$0.00			Pauls Valley Dam and Spillway renovation
215	5,134	OK0034266	2	BIL/Base	Authority	ORF-25-0005-CW	\$2,931,959.00	\$0.00			WW Phase II
215	4,462	OK0027448	2	BIL/Base	Perry Municipal Authority	ORF-24-0023-CW	\$1,000,000.00	\$0.00			New Sanitary Sewer Collection System
215	3,302	OK0022802	2	BIL/Base	Mannford Public Works Authority	ORF-23-0141-CW	\$1,000,000.00	\$0.00		Y	Lake Country Sewer Improvements
215	2,156	ND	3	BIL/Base	Hennessey Utilities Authority	ORF-23-0088-CW	\$3,500,000.00	\$0.00			Wastewater Collection System Improvements
215	2,075	OK0030686	2	BIL/Base	Krebs Utility Authority	ORF-23-0037-CW	\$300,000.00	\$300,000.00	WE/EE	Y	Automatic Meter Readers (AMR)
215	1,141	ND	2	BIL/Base	Boise City Public Works Authority	ORF-23-0005-CW	\$6,000,000.00	\$0.00			Sewer Line Replacement
215	327	OK0022993	2	BIL/Base	Shidler Public Works Authority	ORF-23-0074-CW	\$2,400,000.00	\$0.00			Shidler WWTP Improvements

Ranking Points	Pop	OPDES Permit #	Tier	Loan Type	Entity Name	Loan Number	Est. Loan Amount	GPR	GPR Type	CO or NOV	Project Description
215	220	OKG580004	2	BIL/Base	Town of Marshall	ORF-23-0163-CW	\$200,000.00	\$0.00			Lift Station Improvements
215	120	ND	2	BIL/Base	Willow Municipal Authority	ORF-23-0148-CW	\$200,000.00	\$0.00			Wastewater System Maintenance
205	57,950	OK0026841	3	BIL/Base	Midwest City Municipal Authority	ORF-24-0032-CW	\$6,100,000.00	\$0.00			Northside Utilities Improvement Project
205	16,549	OK0026018	3	BIL/Base	Chickasha Municipal Authority	ORF-23-0093-CW	\$225,000.00	\$0.00			23 & Grand Lift Station / College Station
205	16,549	OK0026018	3	BIL/Base	Chickasha Municipal Authority	ORF-23-0045-CW	\$10,000,000.00	\$0.00			Inflow and Infiltration Reduction
205	11,859	OK0021563	3	BIL/Base	Weatherford Public Works Authority	ORF-23-0118-CW	\$1,500,000.00	\$0.00			Wastewater Treatment Plant
205	11,191	OK0027715	3	BIL/Base	Guthrie Public Works Authority	ORF-23-0034-CW	\$36,758,750.00	\$0.00			Wastewater Collection System Improvements
205	8,282	OK0031011	3	BIL/Base	Clinton Public Works Authority	ORF-23-0041-CW	\$3,530,000.00	\$0.00			Sanitary Sewer & Manhole Rehabilitation Project
205	3,012	OK0030996	3	BIL/Base	Jones Public Works Authority	ORF-23-0001-CW	\$1,054,500.00	\$0.00			Ph II Const
205	2,453	ND	3	BIL/Base	Taneha Utilities Authority	ORF-23-0002-CW	\$7,000,000.00	\$0.00			Wastewater Collection System Improvements
205	1,936	OK0038393	3	BIL/Base	Union City Municipal Authority	ORF-23-0142-CW	\$411,700.00	\$0.00			MANHOLE REPAIR
205	120	OKG380014	3	BIL/Base	Bryan County RWS & SWMD #2	ORF-23-0172-CW	\$500,000.00	\$500,000.00	WE/EE		Installation of Automatic Read System
195	22,580	OKG380054	3	BIL/Base	Sapulpa Municipal Authority	ORF-23-0021-CW	\$3,194,040.00	\$0.00			West Side Sanitary Sewer Improvements
195	22,580	OK0043974, OKG380054	3	BIL/Base	Sapulpa Municipal Authority	ORF-23-0026-CW	\$3,291,928.00	\$0.00			Downtown Sewer Main Replacement
195	22,580	OK0043974, OKG380054	3	BIL/Base	Sapulpa Municipal Authority	ORF-23-0047-CW	\$2,452,065.00	\$0.00			Hobson St. Interceptor Capacity Enhancement and AI
195	22,580	OK0043974, OKG380054	3	BIL/Base	Sapulpa Municipal Authority	ORF-23-0078-CW	\$1,964,277.00	\$0.00			Const of Basins #2 and #4 Line Replace & Reroute
195	2,719	OK0032379	3	BIL/Base	New Cordell Utilities Authority	ORF-23-0008-CW	\$1,600,000.00	\$0.00			Wastewater Treatment Plant and Lagoons
195	892	RW20-022	3	BIL/Base	Cashion Public Works Authority	ORF-23-0117-CW	\$325,000.00	\$0.00			Sewer Line Replacement
175	14,211	OK0027138	4	BIL/Base	Glenpool Public Works Authority	ORF-23-0055-CW	\$15,000,000.00	\$0.00			Glenpool Sewer Plant Replacement
165	3,905	OK0022535	2	BIL/Base	Spencer Utilities Authority	ORF-23-0153-CW	\$100,000.00	\$0.00			CL2 and SO2 Improvements
165	1,314	OK0034223	4	BIL/Base	Oologah Municipal Authority	ORF-23-0107-CW	\$500,000.00	\$0.00			WWTP Improvements
165	450	ND	4	BIL/Base	Medicine Park Public Works Authority	ORF-23-0102-CW	\$500,000.00	\$0.00			Lagoon rehab
155	96,286	OK0026026, OK1020724	4	BIL/Base	Edmond Public Works Authority	ORF-25-0012-CW	\$10,000,000.00	\$0.00			Hunter's Creek Interceptor
155	96,286	OK0026026, OK1020724	4	BIL/Base	Edmond Public Works Authority	ORF-25-0013-CW	\$24,000,000.00	\$0.00			Coffee Creek Ph 2
145	27,141	OK0037401	4	BIL/Base	Jenks Public Works Authority	ORF-23-0124-CW	\$29,000,000.00	\$0.00			106th Street/Elm Street Lift Station and Force Main
145	27,141	OK0037401	4	BIL/Base	Jenks Public Works Authority	ORF-23-0128-CW	\$8,500,000.00	\$0.00			Victoria Pond Lift Station and Force Main Expansion
145	25,556	OK0028584	4	BIL/Base	Yukon Municipal Authority	ORF-23-0146-CW	\$1,250,000.00	\$0.00			Belt Press Replacement
145	22,232	OK0026816	4	BIL/Base	Mustang Improvement Authority	ORF-23-0024-CW	\$3,000,000.00	\$0.00			Replace Lift Station #1
145	22,232	OK0026816	4	BIL/Base	Mustang Improvement Authority	ORF-23-0036-CW	\$3,000,000.00	\$0.00		Y	Sewer Pipe and Manhole Bursting

Ranking Points	Pop	OPDES Permit #	Tier	Loan Type	Entity Name	Loan Number	Est. Loan Amount	GPR	GPR Type	CO or NOV	Project Description
145	1,521	ND	4	BIL/Base	Luther Public Works Authority	ORF-24-0028-CW	\$500,000.00	\$0.00			Sewer System Improvements
145	373	OK0027154	4	BIL/Base	Asher Utilities Development Authority	ORF-23-0058-CW	\$500,000.00	\$0.00			Wastewater lagoons
135	8,840	OK0100404, OK0027375	4	BIL/Base	Collinsville Municipal Authority	ORF-23-0052-CW	\$16,068,600.00	\$0.00			Mechanical Wastewater Plant
135	8,840	OK0100404, OK0027375	4	BIL/Base	Collinsville Municipal Authority	ORF-23-0053-CW	\$3,672,680.00	\$0.00			Stormwater lines
135	243	ND	4	BIL/Base	Kremlin Public Works Authority	ORF-24-0056-CW	\$120,000.00	\$0.00			Revitalization of Lift Stations
135	194	ND	4	BIL/Base	Jet Utilities Authority	ORF-23-0138-CW	\$450,000.00	\$450,000.00	WE/EE		AMR Meter Replacement

STATE OF OKLAHOMA
Clean Water State Revolving Fund Project Priority List
Effective July 1, 2024 - June 30, 2025
SFY 2025 Emerging Contaminants Projects

Ranking Points	Pop	OPDES Permit #	Tier	Loan Type	Entity Name	Loan Number	Est. Loan Amount	GPR	GPR Type	CO or NOV	Project Description
295	57,950	OK0026841	3	EC	Midwest City Municipal Authority	ORF-25-0030-CW	\$2,252,000.00	\$0.00			P&D Emerging Contaminants - Microplastics

GPR - Green Project Reserve

BIL/Base - CWSRF Supplemental Grant & Cap Grant

GI - Green Infrastructure

EC - Emerging Contaminants

Loan Totals for SFY 2025

\$453,055,382.21

WE - Water Efficiency

Tier - Affordability Criteria Ranking

GPR Totals for SFY 2025

\$12,330,822.75

EE - Energy Efficiency

NOV - Notice of Violation

EI - Environmentally Innovative

CO - Consent Order