



# PRESS RELEASE

Thursday, Jan. 22, 2026

**OTA Public Relations**

**Contact: Lisa Shearer-Salim**

405-425-2849 | <https://pikepass.com>

**FOR IMMEDIATE RELEASE**

Press Release #002-26

---

## **OTA seeks virtual public input on new East-West Connector turnpike interchange at I-35 in Norman**

The Oklahoma Turnpike Authority is seeking virtual public input online for the future interchange of the East-West Connector turnpike at I-35 in Norman. Those in the surrounding areas such as Moore and Cleveland County who travel I-35 regularly are also asked to provide input. The online comment period will remain open through Feb. 20.

This will be the third interchange constructed for the 28-mile-long new turnpike that ultimately will provide a new east-west corridor connecting I-44 to I-40 and the I-335/Kickapoo Turnpike as part of the Oklahoma City Outer Loop. The public is asked to provide input on the new infrastructure to be added at the interchange and give their thoughts on traffic flow such as new ramp configurations and frontage road changes, as examples. Feedback on how the interchange and the local infrastructure improvements will impact motorists is also sought.

### **East-West Connector interchange at I-35, Cleveland County**

#### **Virtual Public Comment Period**

**Jan. 20-Feb. 20**

**[www.accessoklahoma.com](http://www.accessoklahoma.com)**

**1-844-562-2237**

The I-35 interchange will be built in phases with construction of the first project expected to start in spring 2027. The first phase will construct the new East-West Connector turnpike connections with I-35, which includes reconstructing the existing I-35 and Indian Hills Rd.

interchange. While OTA is overseeing the construction of this interchange, only the East-West Connector turnpike will be tolled.

The new interchange will feature an initial I-35 connection with two ramps starting at the main line turnpike bridges over 36th Ave. N.W. and connecting down to the turnpike frontage road. Also in this phase, a portion of the one-way turnpike frontage roads between 36th Ave. N.W. and I-35 will be constructed, to replace the existing two-way operation on Indian Hills Rd. There will be a turnaround on the east side of 36th Ave. N.W. New bridges will carry the East-West Connector frontage roads over I-35.

This \$150 million first phase will build new highway-to-highway ramps between I-35 and the East-West Connector and includes these ramps:

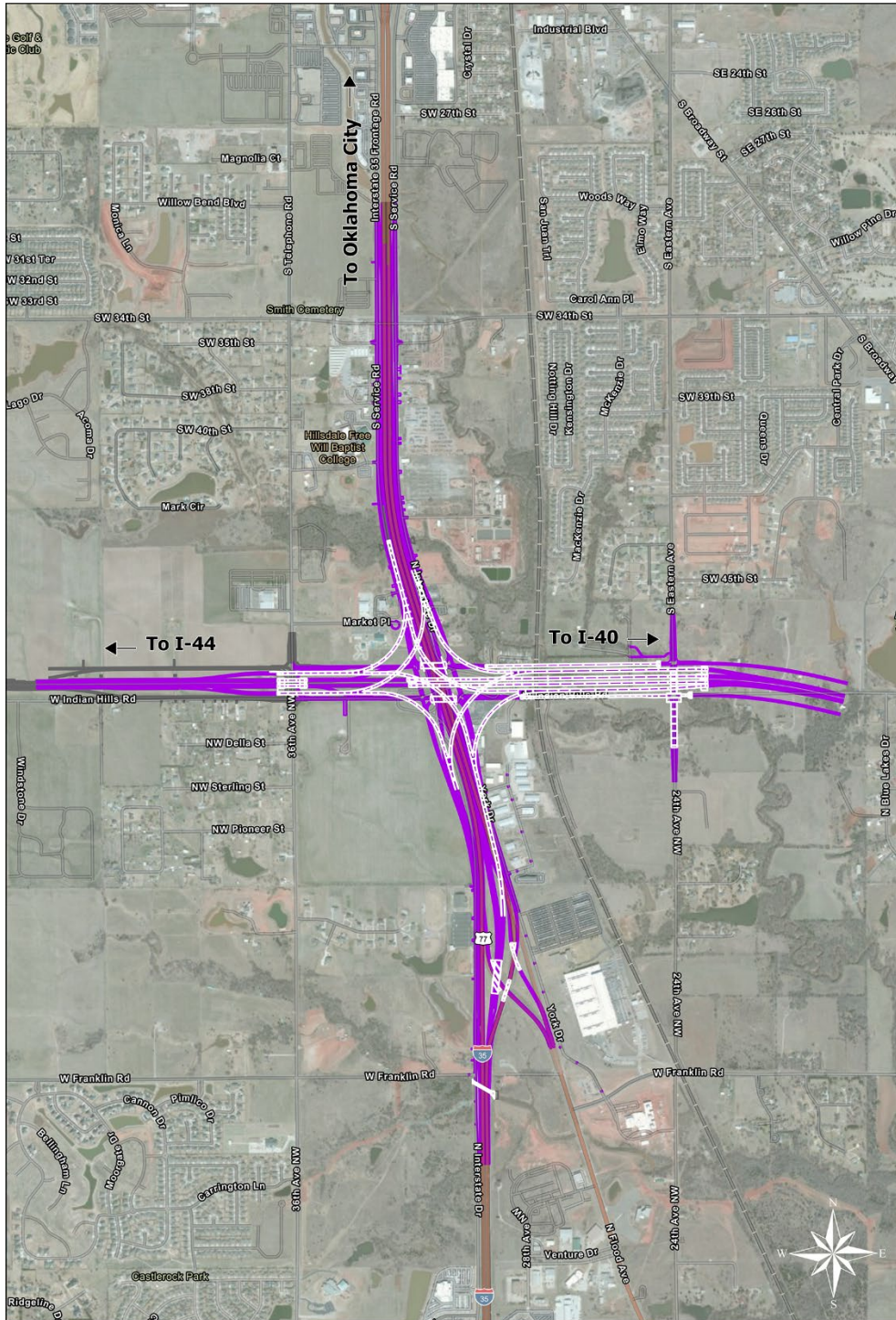
- On-ramp from the southbound service road to southbound I-35 north of S.W. 34th St.;
- Off-ramp from I-35 southbound to the southbound service road north of Indian Hills Rd.;
- On-ramp from the southbound service road to southbound I-35 north of Franklin Rd.;
- On-ramp from the northbound service road to northbound I-35 north of Indian Hills Rd.;
- and
- Off-ramp from I-35 northbound to the northbound service road north of SW 34th St.

This work will coincide with an Oklahoma Department of Transportation project to convert the I-35 service roads to one way north of S.W. 34th St. The west, or southbound, I-35 service road will be one way from S.W. 34th St. to Franklin Rd. The east, or northbound, I-35 service road will be one way from Huettners Drive to S.W. 34th St. Turnaround bridges will be built on both sides of Indian Hills Rd. to circulate traffic on the one-way service roads.

The new interchange is estimated at \$900 million for construction of all phases and will provide significant traffic flow improvements for those traveling in south Oklahoma City, Moore and Norman.

These plans are explained in more detail in a video presentation on the ACCESS Oklahoma project website page, which also includes an online comment form for public input. Those who wish to leave a voicemail with their input may call the ACCESS Oklahoma hotline at 1-844-562-2237 through Feb. 20.

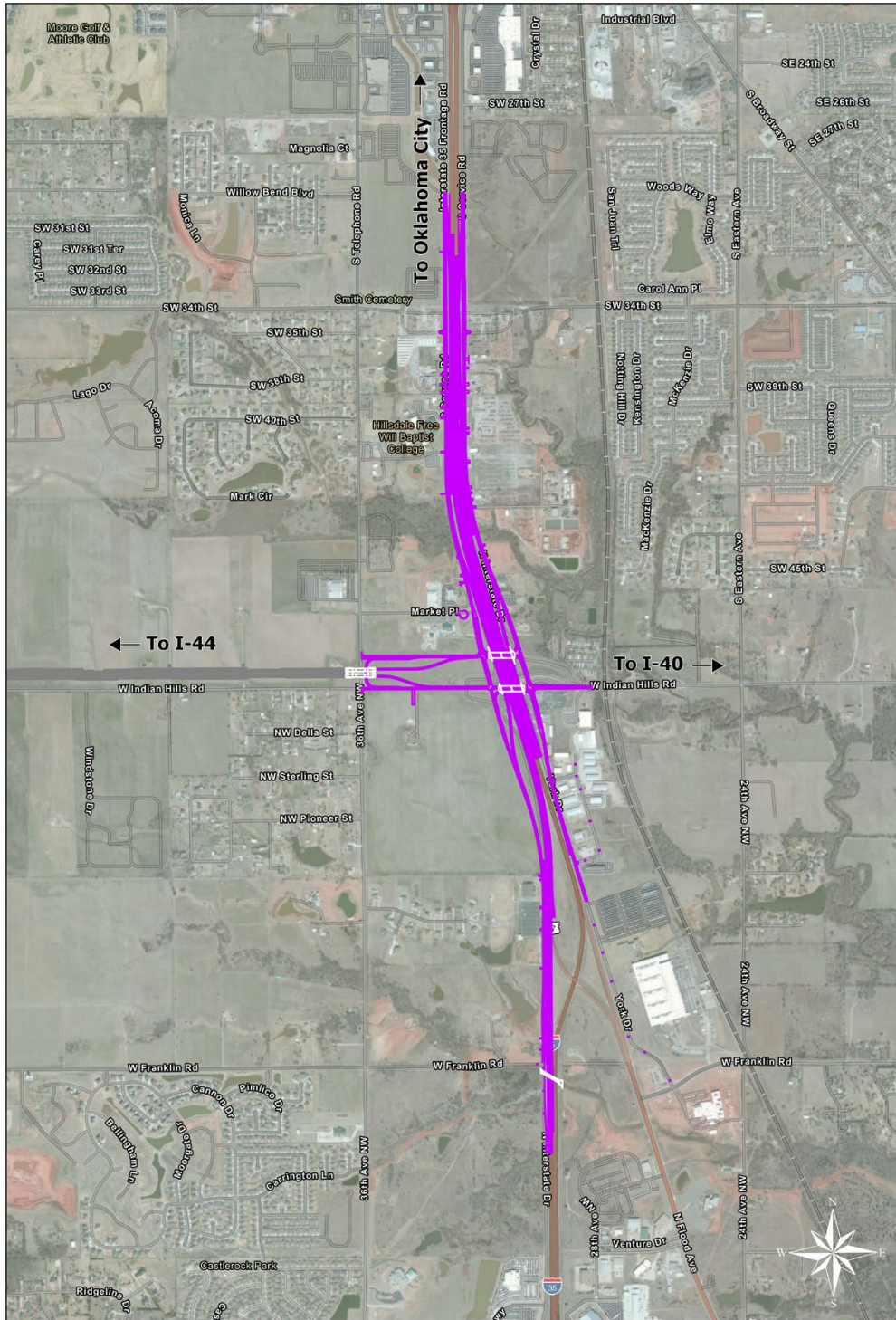
Public input will be sought later in 2026 for the East-West Connector interchange at I-40.



## **East West Connector EWC-28004 Exhibit 1**



The above map graphic shows the final East-West Connector interchange with I-35 at Indian Hills Rd. in Norman, which will be constructed in phases. Public comment on this future interchange is open online at <https://www.accessoklahoma.com> through Feb. 20.



## East West Connector EWC-28804A Exhibit 1



The map graphic above shows the planned work of the first phase in building the East-West Connector interchange at I-35 in Norman, which is slated to begin construction in spring 2027.