



# TRAFFIC ADVISORY

**Tuesday, Dec. 16, 2025**

**OTA Public Relations**

**Contact:** Lisa Shearer-Salim

405-425-2849 | <https://pikepass.com/>

Latest updates may be found on OTA's social media accounts on [Facebook](#) and [X/Twitter](#).

---

**Illegally over-height vehicle strikes, damages six county bridge above I-44/Will Rogers Turnpike in Rogers County; 4 bridges closed**

Oklahoma Turnpike Authority and Oklahoma Department of Transportation crews have quickly inspected multiple county bridges above the I-44/Will Rogers Turnpike after an illegally over-height commercial motor vehicle drove this afternoon from Tulsa to near Miami.

At this time, six bridges between SH-266 near Verdigris and east of SH-28 near Vinita are showing damage and four of the county road bridges have been closed until repairs can be made. The Will Rogers Turnpike remains open in each direction, but short, temporary closures may occur as inspections continue.

The bridges hit include:

- E. 530 Rd. - closed between S. 4130 Rd. and Lakeway Rd.
- S. 4220 Rd. - closed between E. 460 Rd. and E. 470 Rd. east of Claremore
- N. 429 Rd. - closed between E. 390 Rd. and SH-28
- N. 4300 Rd. - closed between E. 380 Rd. and W. 390 Rd.
- N. 4310 Rd. - open

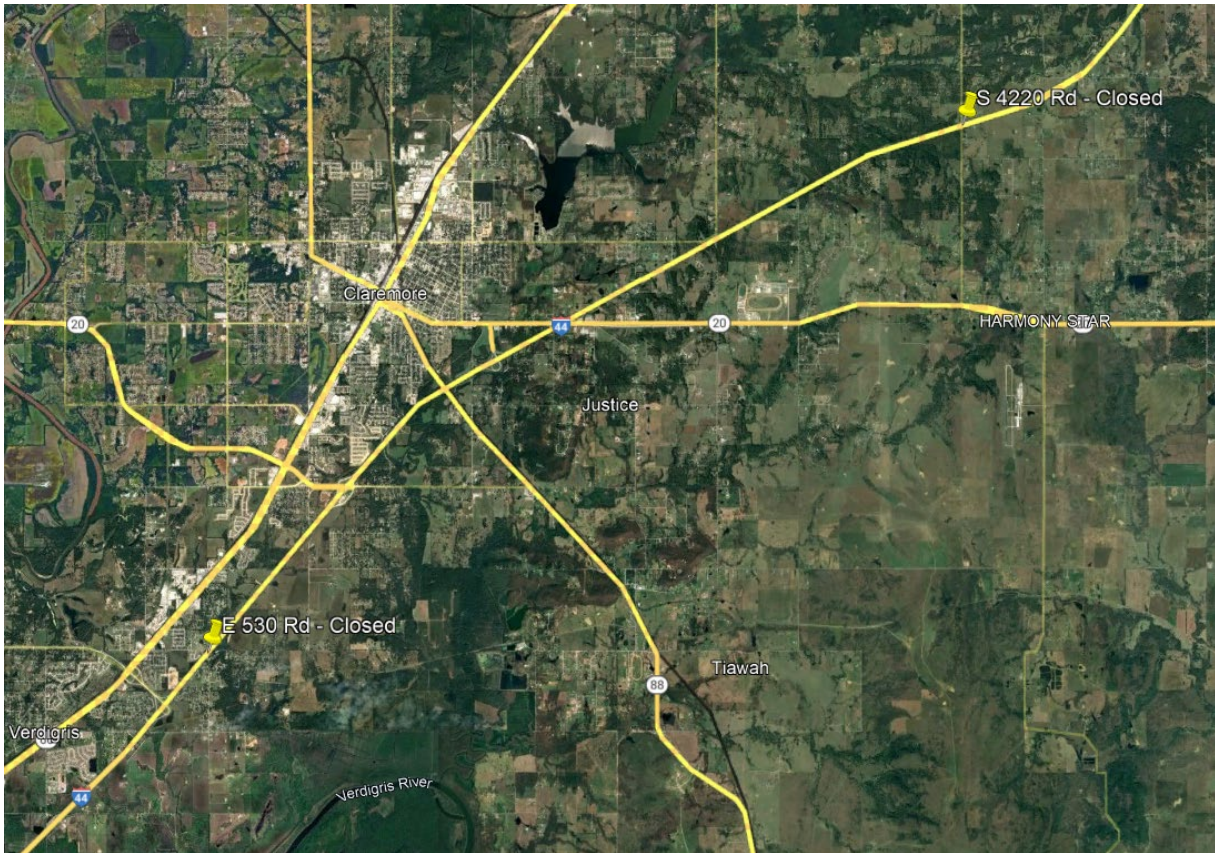
- W. 370 Rd. - open

OTA is working closely with officials from Rogers County, City of Claremore, the Oklahoma Highway Patrol and ODOT in response to this incident. The four bridges will remain closed until further inspections are completed to assess damages and determine any necessary repairs. Updates will be provided as they become available.

It is illegal for trucks taller than 14 feet to travel the state highway system without permits and approved routes. The bridges damaged today range from 14 feet and 11 inches to 15 feet and 4 inches in vertical clearance, well above the legal limit.

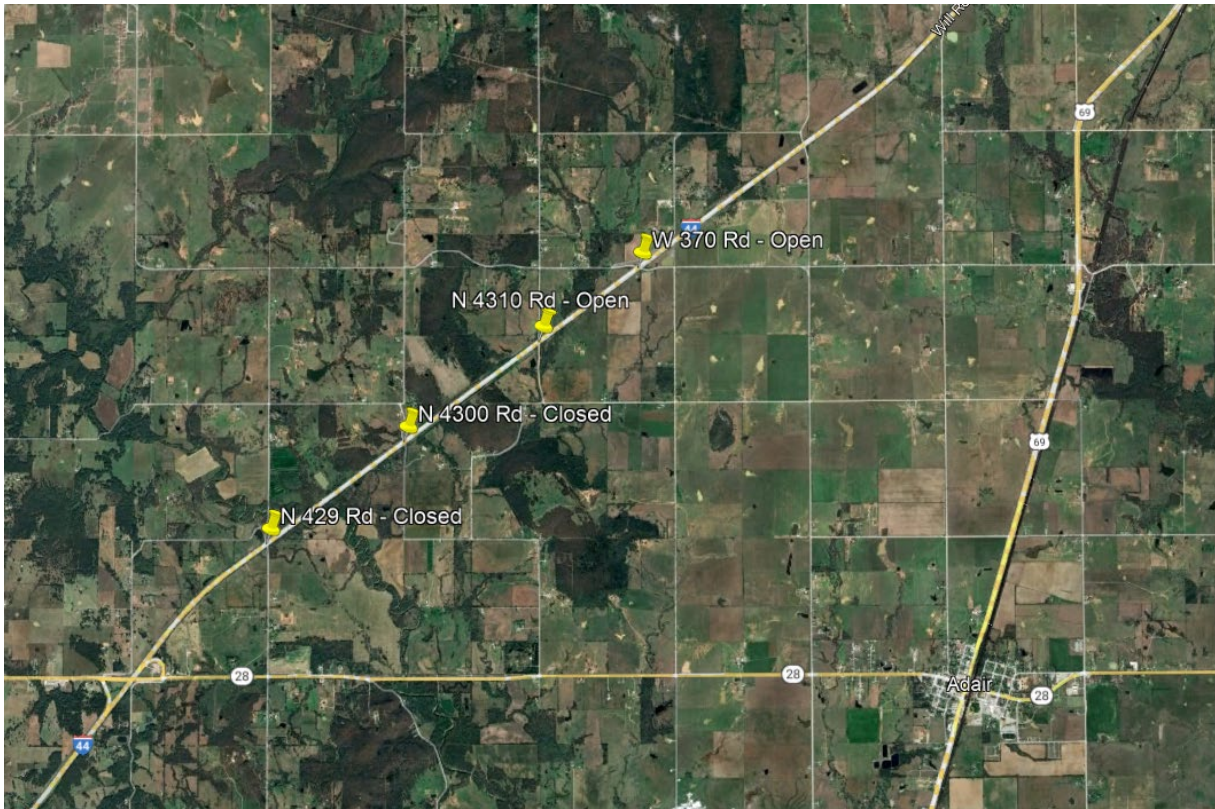
"We are continuing to see damage to our state transportation infrastructure from illegal, over-height semi-trucks. This is a critical issue that puts the traveling public at risk and is unacceptable. We are extremely grateful no one was injured in this incident," OTA Executive Director Joe Echelle said. "We implore truck drivers to follow all Oklahoma laws and work with the state's Size and Weights permitting office to ensure that all travelers are safe on our roadways and that our infrastructure remains undamaged by these careless acts."

---



This map graphic shows county bridge locations along the I-44/Will Rogers Turnpike closed due to bridge strikes by a semi-truck between Verdigris and 5 miles northeast of SH-20.





This map graphic four county bridge closures along the I-44/Will Rogers Turnpike northeast of SH-28.



Check [www.oktraffic.org](http://www.oktraffic.org) for real-time traffic information or download the [Drive Oklahoma](#) app!

Want to receive the lowest toll rate? Sign up for PIKEPASS at <https://www.pikepass.com>