



PRESS RELEASE

Wednesday, Nov. 5, 2025

OTA Public Relations

405-425-2849 | <https://pikepass.com/>

FOR IMMEDIATE RELEASE

Press Release #014-25

OTA seeks virtual public input on new East-West Connector turnpike interchange at I-44 in McClain County

The Oklahoma Turnpike Authority is seeking virtual public input online for the future interchange of the East-West Connector turnpike at I-44/SH-37 in the Tri-City area of Newcastle, Blanchard and Tuttle in McClain County. The online comment period will remain open through Dec. 3.

This will be the first interchange constructed for the 28-mile-long new turnpike that ultimately will provide a new east-west corridor connecting I-44 to I-40 and the I-335/Kickapoo Turnpike as part of the Oklahoma City Outer Loop. The public is asked to provide input on the new infrastructure to be added at the interchange and give their thoughts on traffic flow such as closing existing ramps and switching traffic to new ramp configurations, as one example. Feedback on how the interchange and the local infrastructure improvements will impact motorists is also sought.

East-West Connector interchange at I-44, McClain County

Virtual Public Comment Period

Nov. 3-Dec. 3

www.accessoklahoma.com

1-844-562-2237

The I-44 interchange will be built in three phases with construction of the first project expected to start in late 2026. This first phase will construct the new East-West Connector turnpike from I-44 east toward the Canadian River bridges. The project will feature a diverging diamond interchange to connect I-44, SH-37, US-62 and the new turnpike. Other features include new frontage roads at I-44, and add new on- and off-ramps at I-44 and N.W. 24th St. While OTA is overseeing the construction of this interchange, only the East-West Connector turnpike will be tolled.

The second construction phase will rebuild about 2 miles of I-44 between the Canadian River and N.W. 24th St. as well as rebuild the N.W. 36th St. overpass bridge. A new collector/distributor road on the west side of I-44 also will be constructed along with a new ramp to connect eastbound I-44 and northbound US-62 to SH-37 and the East-West Connector. This phase is expected to begin in 2027.

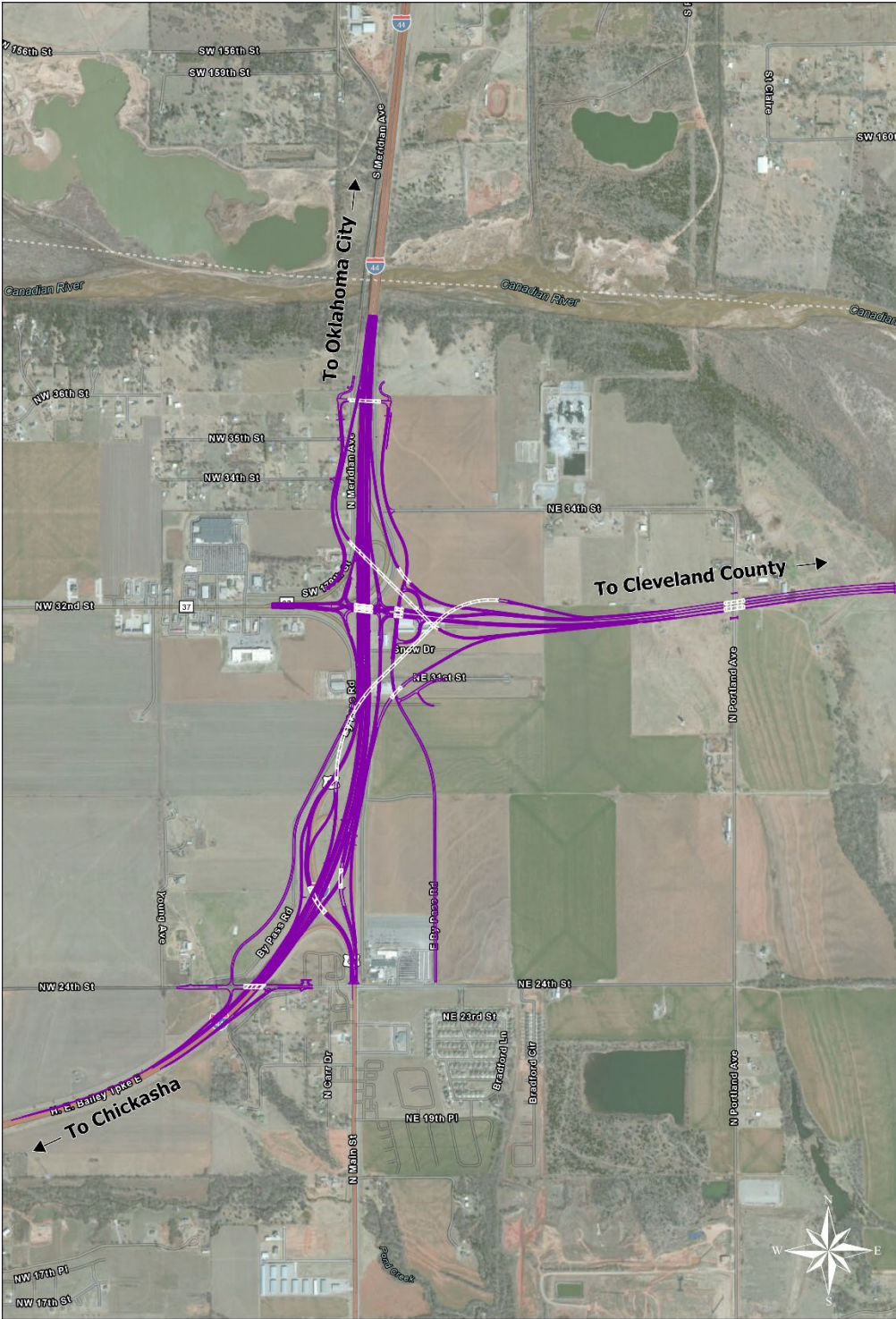
The third and final phase will build new highway-to-highway ramps between I-44 and the East-West Connector and will begin soon after the first two phases. This includes new ramps for:

- Westbound I-44 to eastbound East-West Connector,
- Eastbound I-44 and northbound US-62 to eastbound East-West Connector,
- Westbound East-West Connector to westbound I-44,
- Westbound East-West Connector to southbound US-62 and
- Westbound East-West Connector to eastbound I-44.

The three phases to create the new interchange are estimated at \$345 million and will provide significant traffic flow improvements for those traveling in southwestern Oklahoma City.

These phases are explained in more detail in three videos on the ACCESS Oklahoma project website page, which also includes an online comment form for public input. Those who wish to leave a voicemail with their input may call the ACCESS Oklahoma hotline at 1-844-562-2237 through Dec. 3.

Public input will be sought in 2026 for the East-West Connector interchange at I-35 and the interchange at I-40.



**East West Connector
EWC-28001 I-44 Interchange**



This map graphic depicts the future East-West Connector turnpike interchange at I-44 and SH-37. Public input is sought online about the interchange design through Dec. 3. Look for the East-West Connector project link at www.accessoklahoma.com.