



OTA Communications and Marketing Friday, Sept. 13, 2024

OTA Contact: Lisa Shearer-Salim
405-425-2849

www.pikepass.com
[Twitter](#) and [Facebook @OKTurnpike](#)

FOR IMMEDIATE RELEASE

Press Release #014-24

OTA announces revised footprint for East-West Connector project

A revised footprint for the East-West Connector turnpike corridor in Norman, Moore, Oklahoma City and Cleveland County is available for viewing on the www.accessoklahoma.com website today. Residents and property owners will see that the extents of the rights-of-way now needed for the Oklahoma Turnpike Authority project are anticipated to be significantly reduced after the removal of proposed frontage roads and three interchanges.

“The OTA met with municipal leaders of all communities impacted by this new turnpike route in early 2022 to see how the project could align with local infrastructure needs. Ultimately, frontage roads are a local decision, and we respect the City of Norman's choice to not add to their transportation infrastructure,” OTA Executive Director Joe Echelle said. “With this decision made, OTA has worked as quickly as possible to provide updated information to property owners in the area in order to provide certainty for all those impacted.

“While these changes create some up-front redesign costs for OTA, the removal of the frontage roads and three interchanges also will save millions of dollars in design, right-of-way acquisition and utility relocation and construction costs,” Echelle said.

Initially, the 28-mile new alignment will connect the I-44/Tri-City area of Newcastle, Blanchard and Tuttle at SH-37/N.W. 32nd St. and cross the South Canadian River east to I-35. Ultimately, the corridor will continue northeast to I-40 to connect to the Kickapoo Turnpike. The East-West Connector is a segment of the Oklahoma City Outer Loop, first envisioned by state and municipal leaders more than 30 years

ago. It will serve as another east-west high-speed expressway facility to move traffic across the metro area and provides an additional river crossing.

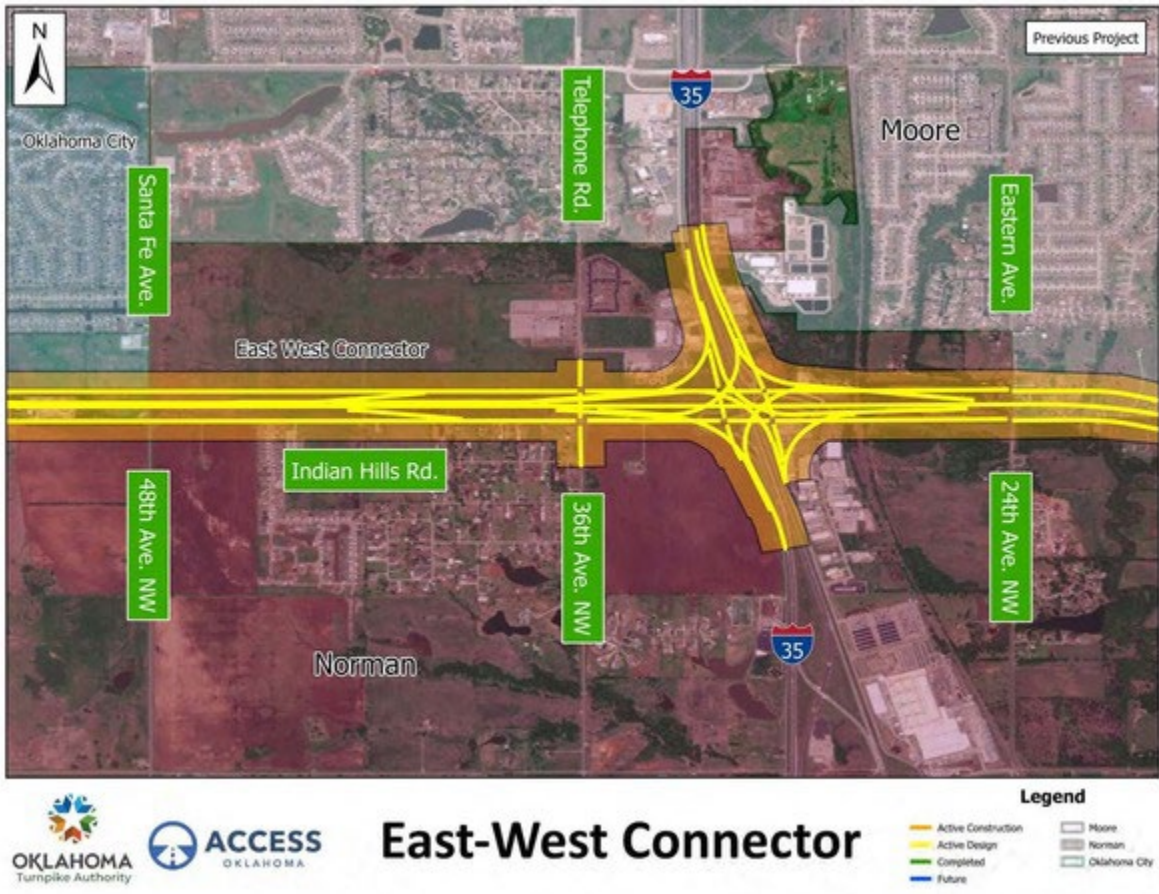
“Engineering design work is ongoing for the first segment of the East-West Connector between I-44 and I-35 and we expect to know the full extent of property acquisition needs for this project by the end of this year. While we had expected to reach 60 percent design completion in October, it will take some additional time to rework the design plans to remove the frontage roads and additional interchanges at 36th St., Broadway and 48th Ave.,” OTA Deputy Director and Chief Engineer T.J. Dill said. “This new, high-speed corridor will connect with the state highway and interstate system at I-44, I-35 and SH-77H/Sooner Rd./12th Ave. N.E.”

Check out the full update from OTA Executive Director Joe Echelle on ACCESS Oklahoma long-range plan projects at https://youtu.be/z_NmWlt8SVE

ACCESS Oklahoma is a 15-year long-range plan that will provide needed upgrades to the existing turnpike system statewide and includes new routes that complete the Oklahoma City Outer Loop and provide a reliever route for the Southern I-35 Corridor. Thanks to the agency’s ongoing cashless conversion, it is now possible to add several interchanges to the existing turnpike system that will create new access to communities and improve emergency response times. Learn more about all long-range plan projects at www.accessoklahoma.com



Oklahoma Turnpike Authority Executive Director Joe Echelle provides an ACCESS Oklahoma update, including initial details of a revised footprint for the East-West Connector corridor in Norman, Moore, Oklahoma City and Cleveland County. Click the image to access the video.



This map graphic shows a before view of the East-West Connector corridor at 36th Avenue N.W. in Norman with frontage roads and a proposed interchange shown.



East-West Connector

Legend

■ Active Construction	 Moore
■ Active Design	 Norman
■ Completed	 Oklahoma City
■ Future	

The above map graphic shows the revised footprint of the East-West Connector corridor at 36th Avenue N.W. in Norman. By removing the proposed frontage road and interchange, this area of the project will require less right-of-way.

Make
OKLAHOMA
Safe

Please click everyone's seat belt each and every time you drive.
Check www.oktraffic.org for real-time traffic information
OTA strongly discourages texting while driving.