

# Connecting Lexile Scores to Move Learning Forward

January 13, 2022

TeleEDGE: Department of Education Line

Moving Learning Forward Using a System of Assessment



**OKLAHOMA**  
Education



# Connecting Learning through a System of Assessment

# Questions to Consider



How is learning connected through a system of assessment?



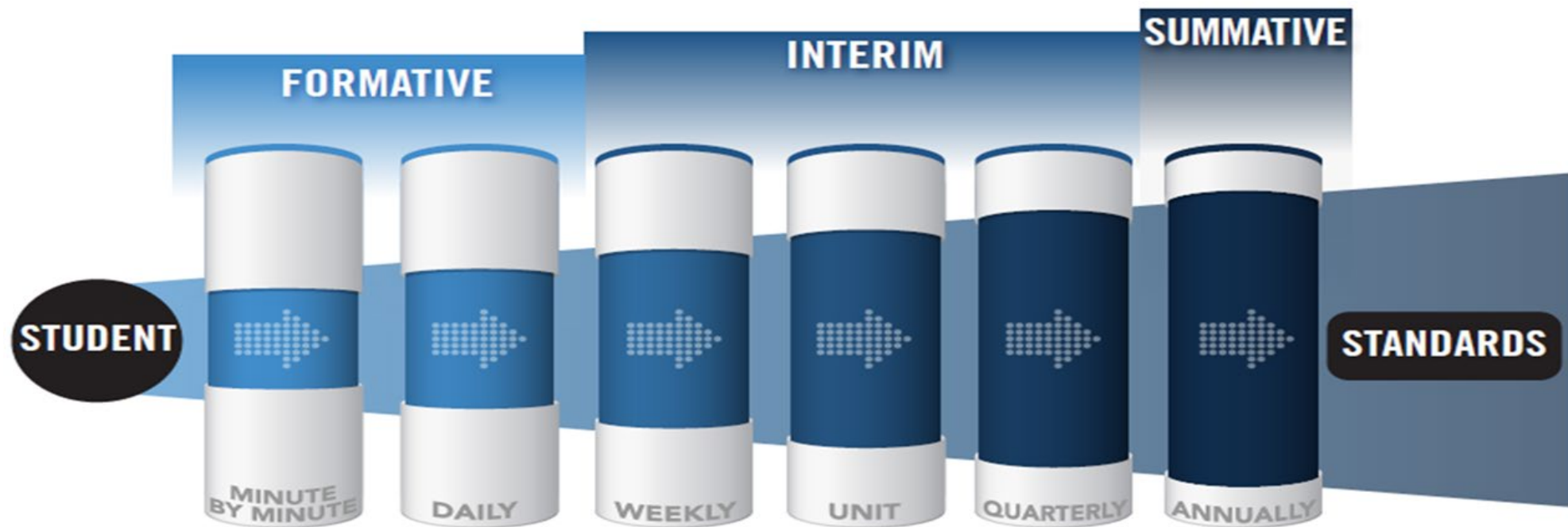
How do state test scores fit into a system of assessment?



How can we connect state test scores to support career planning?

# How learning is connected through a system of assessment

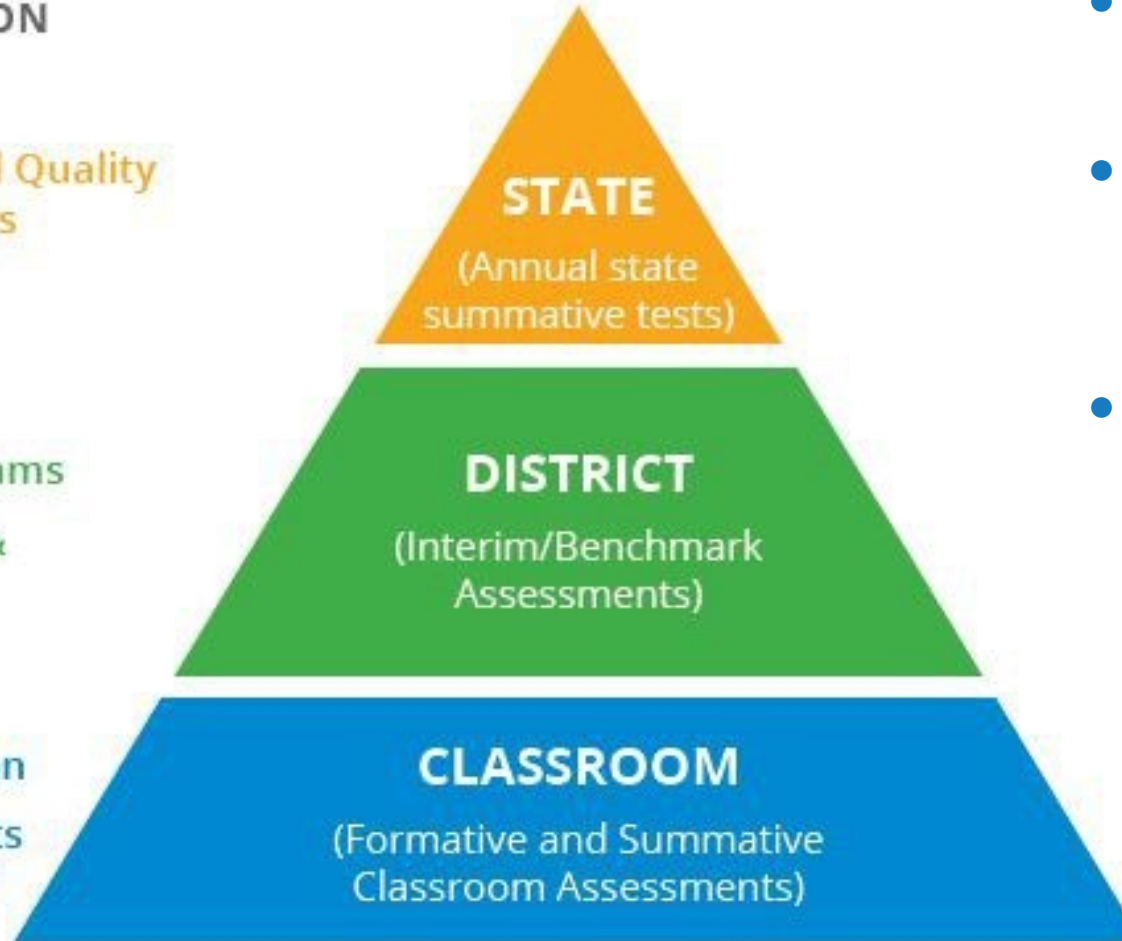
Oklahoma recognizes that a **robust assessment system** is tied closely to students' learning and teachers' instructional practices by valuing and promoting **local, classroom-based formative assessment that help make student learning visible.**



# Elements of an assessment system

## MAIN PURPOSES AND USES OF ASSESSMENT INFORMATION

- Evaluate Learning, School Quality (Accountability), & Policies
- Predict Learning
- Evaluate Curricula/Programs
- Inform student services & placement decisions
- Monitor/Adjust Instruction
- Inform Parents & Students about Learning Progress

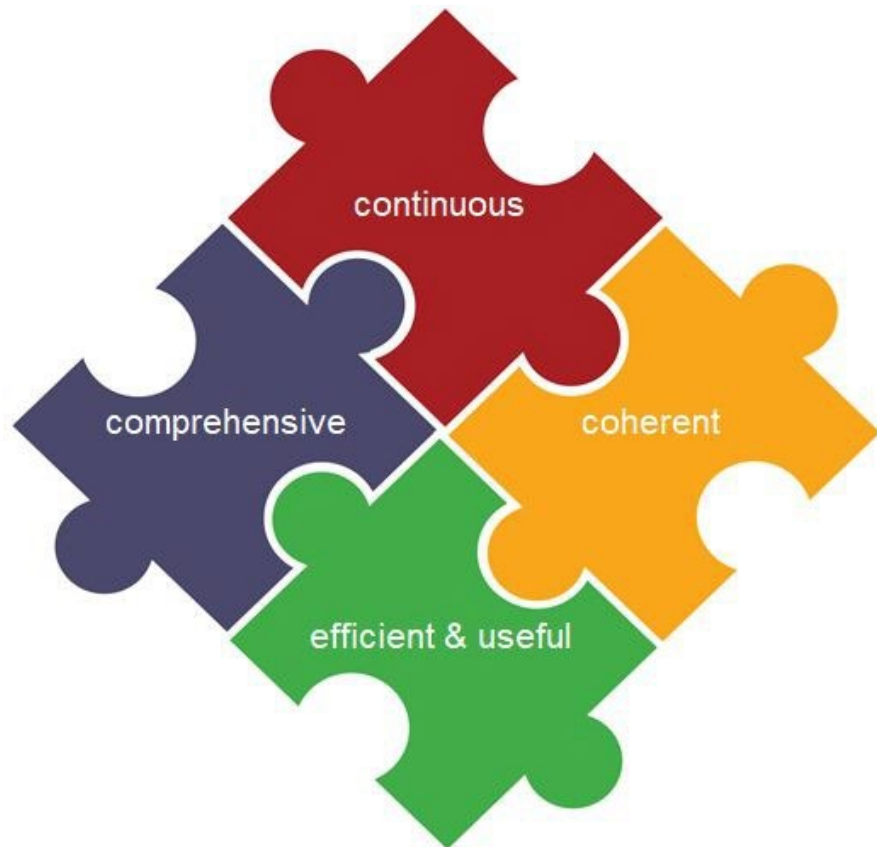


- There are multiple layers of an assessment system.
- The purposes and uses of assessment information differ at each layer.
- It is important to guard against practices that might have a negative impact on classroom instruction (e.g., teaching to the test, over-testing, narrowing of the curriculum, etc.).

[www.nciea.org](http://www.nciea.org)



# Considerations for connecting assessments in a system to move learning forward



## Comprehensive

- The assessment system allows students to demonstrate their understanding in a variety of ways and reflects the breadth and depth of the state content standards.

## Coherent

- The assessment system reflects a systemic educational approach to promote deeper and more meaningful learning for students. Assessments in the system are compatible with the underlying model of learning.

## Continuous

- The assessment system continuously documents student progress over time.

## Efficient

- Each assessment within the system is non-redundant and used to make educational decisions.

## Useful

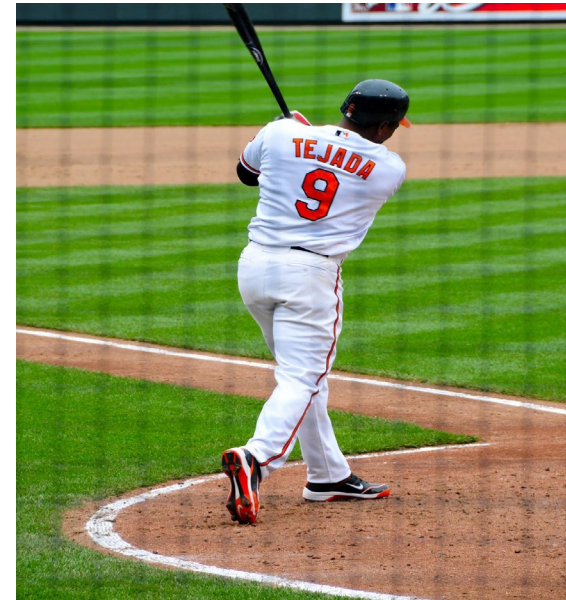
- The assessment system provides the necessary information to make better decisions in a timely fashion and at the right level of specificity to support intended uses.



See paper: [“Not as Easy as It Sounds: Designing Balanced Assessment Systems”](#)

# Comprehensive

Assessments within the system allows students to demonstrate their understanding in a variety of ways and reflects the breadth and depth of the state content standards.



# Coherent

The Assessment system reflects a systemic educational approach to promote deeper and more meaningful learning for students. Assessments in the system are compatible with the underlying model of learning





# Coherent

Assessments and instruction are aligned to the standards that outline grade-level expectations for what students should know and be able to do.

## Standard 3: Critical Reading and Writing

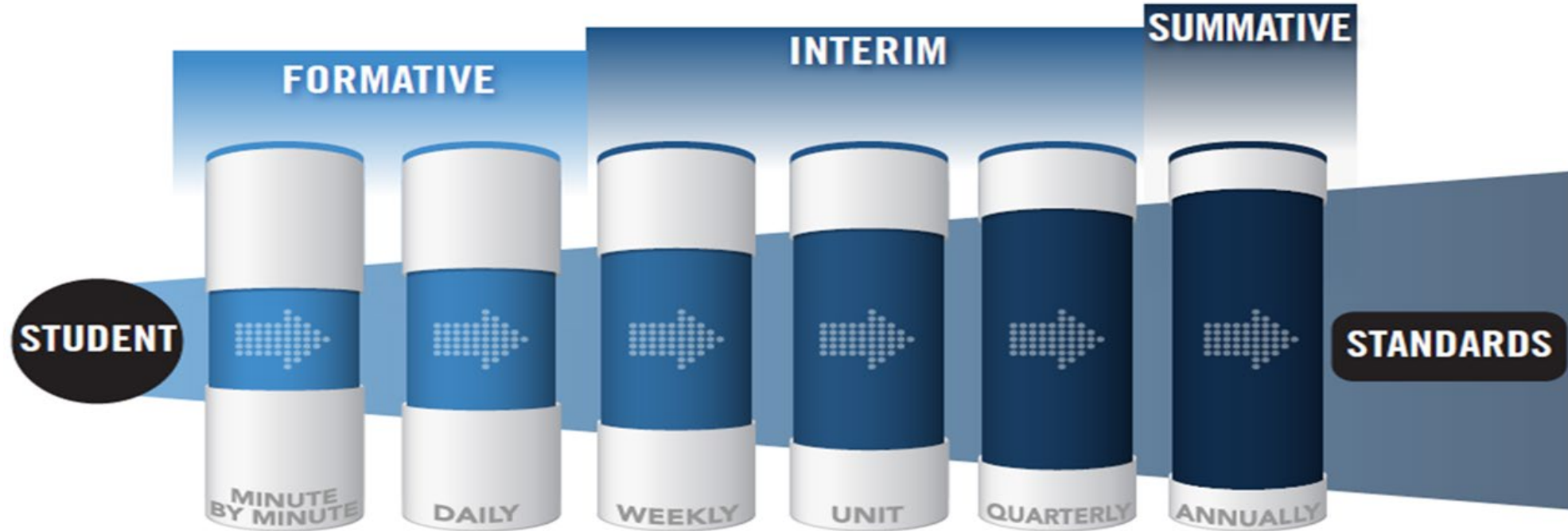
Students will apply critical thinking skills to reading and writing.

**Reading** Students will analyze, interpret, and evaluate increasingly complex literary and informational texts that include a wide range of historical, cultural, ethnic, and global perspectives from a variety of genres.

Grade 3	Grade 4	Grade 5	Grade 6	Grade 7	Grade 8
<p><b>3.3.R.1</b> Students will determine if the author's purpose is to entertain, inform, or persuade.</p>	<p><b>4.3.R.1</b> Students will determine the author's purpose (i.e., entertain, inform, persuade) by identifying key details.</p>	<p><b>5.3.R.1</b> Students will determine the author's purpose (i.e., entertain, inform, persuade), and draw conclusions to determine if the author's purpose was achieved.</p>	<p><b>6.3.R.1</b> Students will compare and contrast stated or implied purposes of authors writing on the same topic from a variety of historical, cultural, ethnic, and global perspectives.</p>	<p><b>7.3.R.1</b> Students will read works written on the same topic from a variety of historical, cultural, ethnic, and global perspectives and compare the methods the authors use to achieve their purposes.</p>	<p><b>8.3.R.1</b> Students will analyze works written on the same topic from a variety of historical, cultural, ethnic, and global perspectives and analyze the methods the authors use to achieve their purposes.</p>
<p><b>3-4.3.R.2</b> Students will determine whether a grade-level literary text is narrated in first- or third-person point of view.</p>		<p><b>5.3.R.2</b> Students will determine whether a grade-level literary text is narrated in first- or third-person point of view (limited and omniscient) and describe its effect.</p>	<p><b>6-7.3.R.2</b> Students will evaluate how perspective (e.g., historical, cultural, ethnic, and global) affects a variety of literary and informational texts.</p>		<p><b>8.3.R.2</b> Students will evaluate perspectives (e.g., historical, cultural, ethnic, and global) and describe how they affect various literary and informational texts.</p>

# Continuous

Assessments measure student progress on an ongoing basis to provide timely evidence of learning



# Efficient

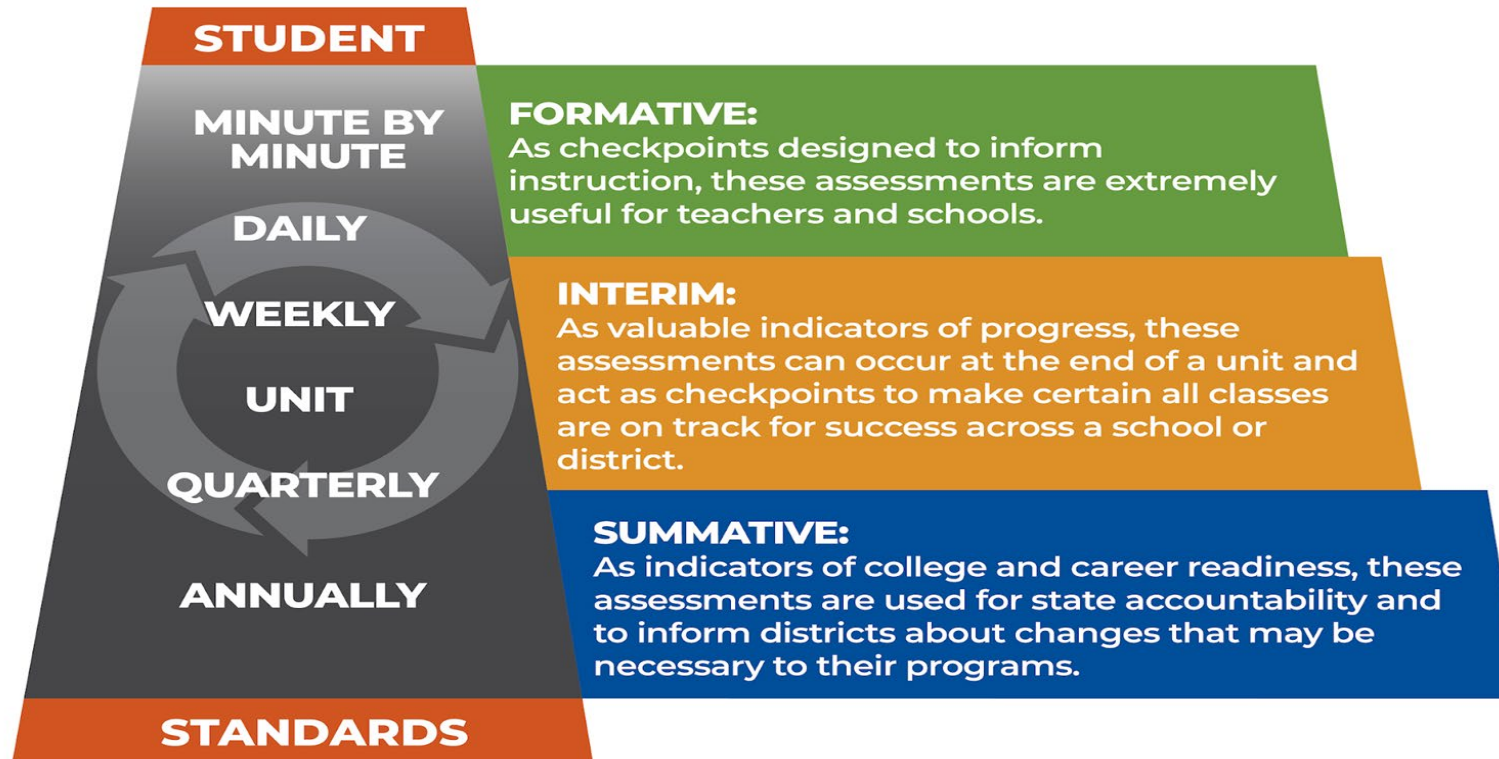
Each assessment within the system is non-redundant and provides timely information and evidence of student learning to make educational decisions.

District Name: \_\_\_\_\_ School: \_\_\_\_\_ Date Revised: \_\_\_\_\_

Assessment Name	Requiring Entity	Grade Level Assessed	Course/Subject	Reason for Assessment	Type of Assessment (Screening, Diagnostic, Interim, )	Alignment: Standard or Skill	Delivery Method (Online, Paper/Pencil, Oral)
Example Assessment	District	grades 3-8	Math	Monitor that all students are progressing toward district goals	Interim	Oklahoma Academic Math Standards	Teacher monitored, online

# Useful

Assessments within the system provide timely information and evidence of what students know and are able to do to inform teaching and learning.

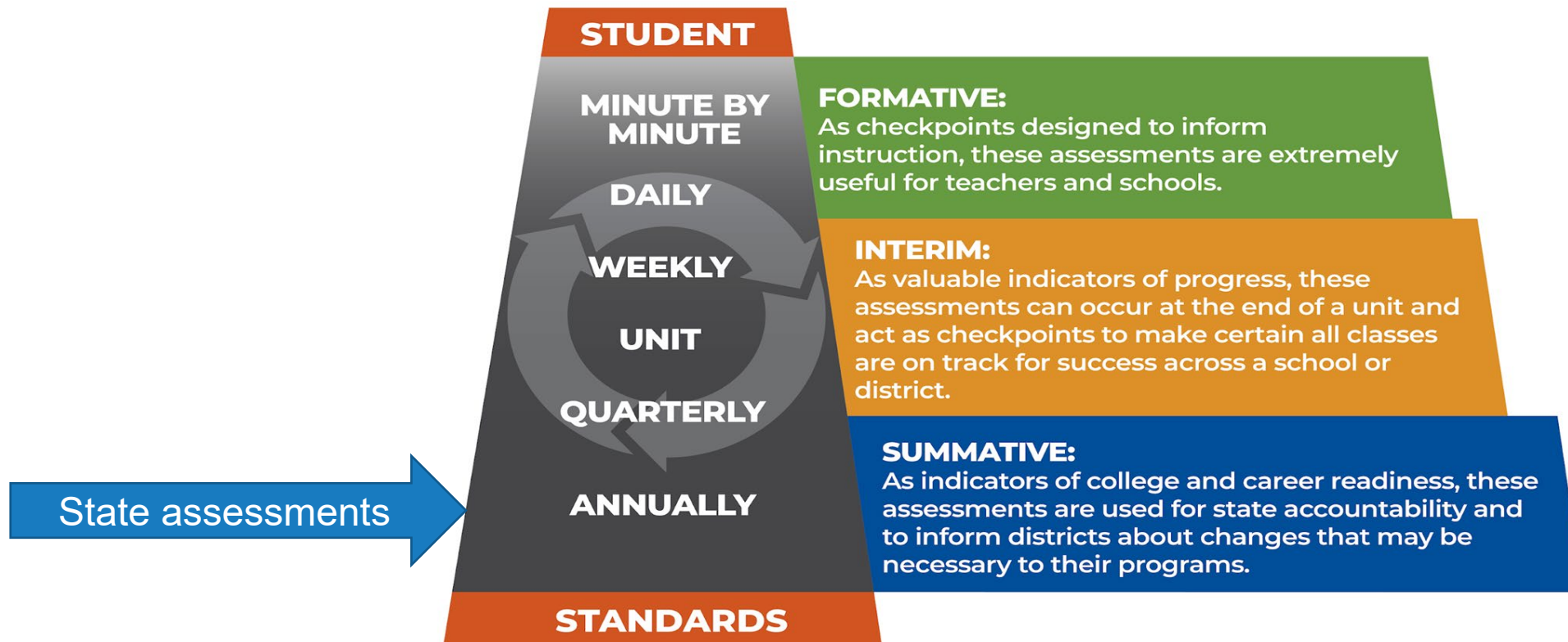


# Role of State Assessments in an Assessment System



# State assessments in the system

State, district, and classroom assessments can work together in a **coherent system of assessment**. Doing so provides educators with timely information on students' progress and overall achievement each year.



# State Summative Assessments in a Typical Year



## Grade-Level Expectations

- Is about proficiency on grade-level knowledge
- Is a single snapshot and does not tell the whole story
- Should be used in conjunction with district and classroom assessments to monitor progress and overall achievement



**How far am I from  
end-of-year  
expectations?**

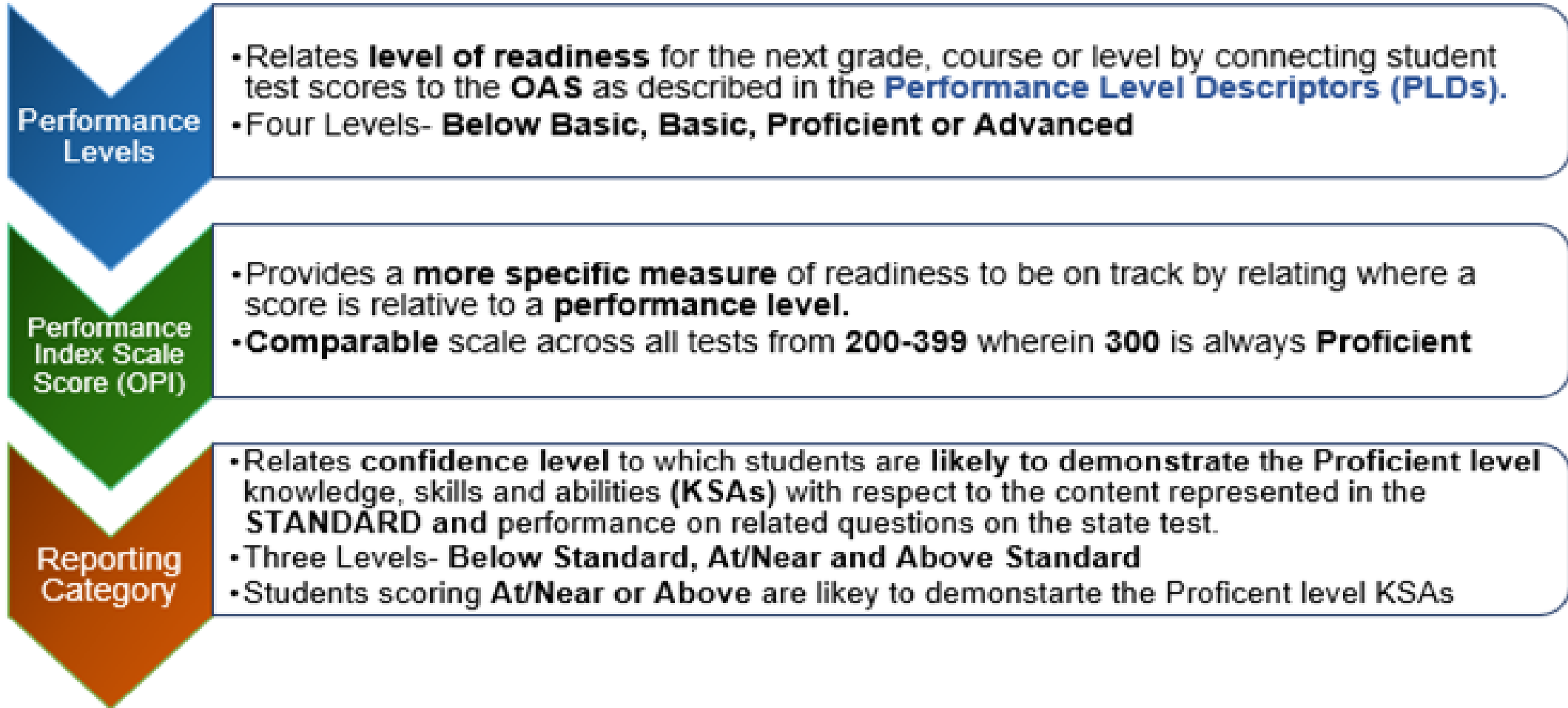
# State Summative Assessments from SY 2020-2021

## Grade-Level Expectations

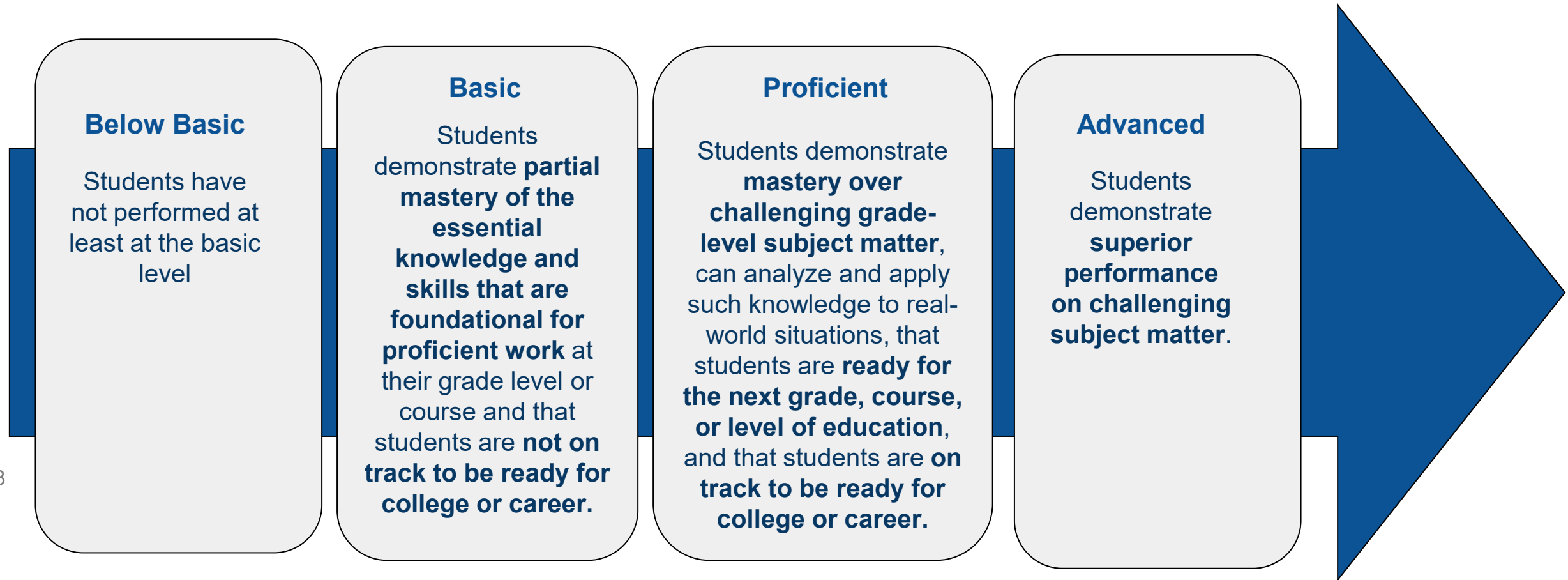
- Is still a sound comparison to grade-level expectations
- Tells us the what about student performance
- Does not tell us the “why” about student performance
- Helps us understand system-level supports that are necessary to help teachers and students

**How much further am I from end-of-year expectations?**

# Data from state summative assessments



# Performance levels communicate readiness along a continuum



Source: [Senate Bill 1197](#)



# OPIs pinpoint performance within a level

Grade 5 ELA	Spring	200 – 270	Below Basic
		271 – 299	Basic
		300 – 322	Proficient
		323 – 399	Advanced
Grade 5 Math	Spring	200 – 265	Below Basic
		266 – 299	Basic
		300 – 320	Proficient
		321 – 399	Advanced
Grade 5 Science	Spring	200 – 271	Below Basic
		272 – 299	Basic
		300 – 329	Proficient
		330 – 399	Advanced

Mean OPI scale scores pinpoint overall performance within a performance level.

Grade 11 OPI scale scores for ELA and Math are displayed in the Accountability Reporting application in the Assessment Performance Report.

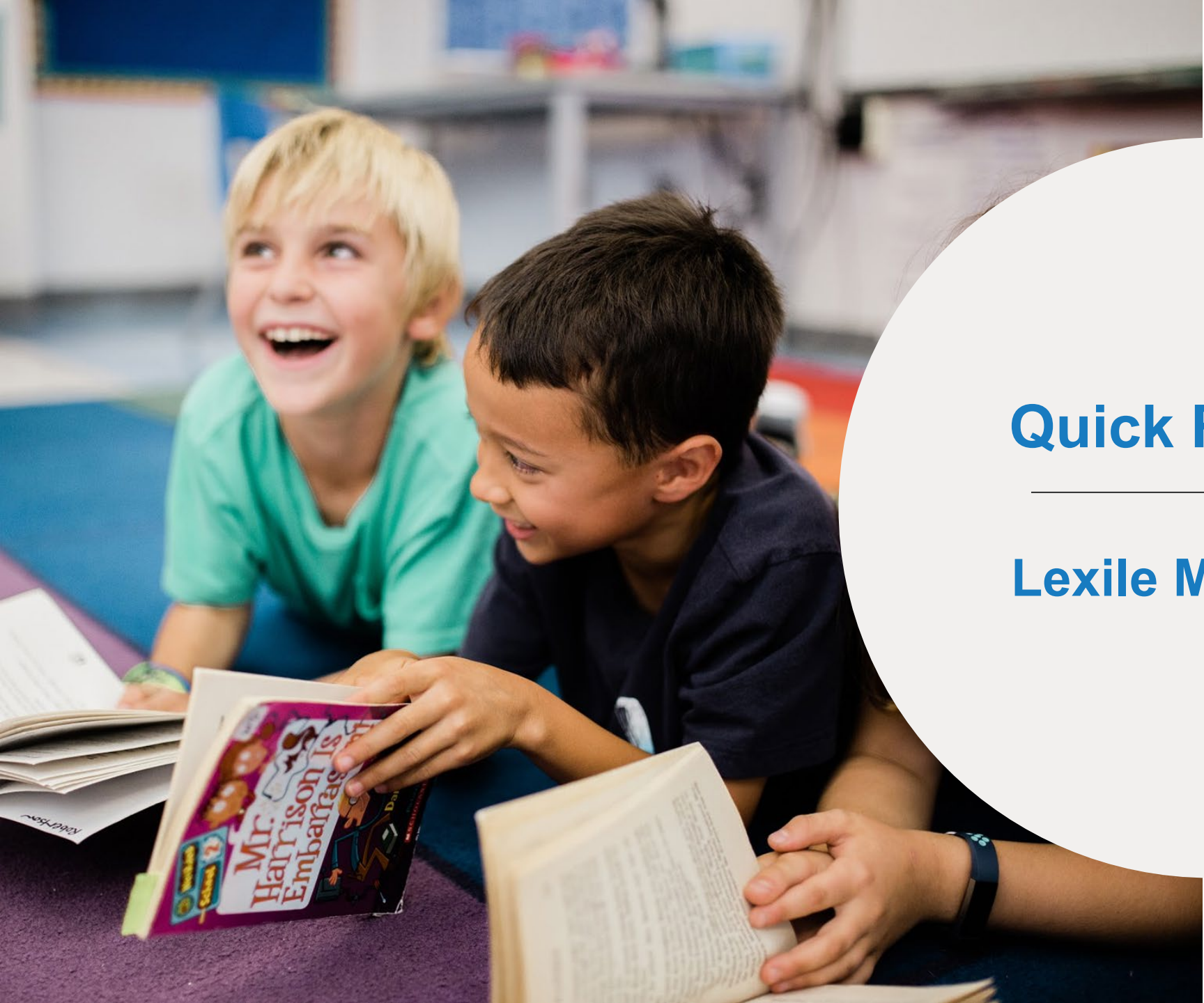
[Grade 3-8 OSTP Performance Level Lookup Table](#)  
[Grade 11: ACT/SAT OPI Conversion](#)

# Reporting category data helps us understand where unfinished learning may need to be addressed

**Reporting Category Performance** data provide an additional piece of evidence that when connected with local assessment data can bring to the surface where groups of students may be struggling.

Reporting category performance is reported with an indicator that communicates a **confidence level** of a student's likelihood of being able to demonstrate the proficient level **Knowledge, Skills, and Abilities (KSAs)** found in the [Performance Level Descriptor \(PLD\)](#) and assessed through at least six questions.





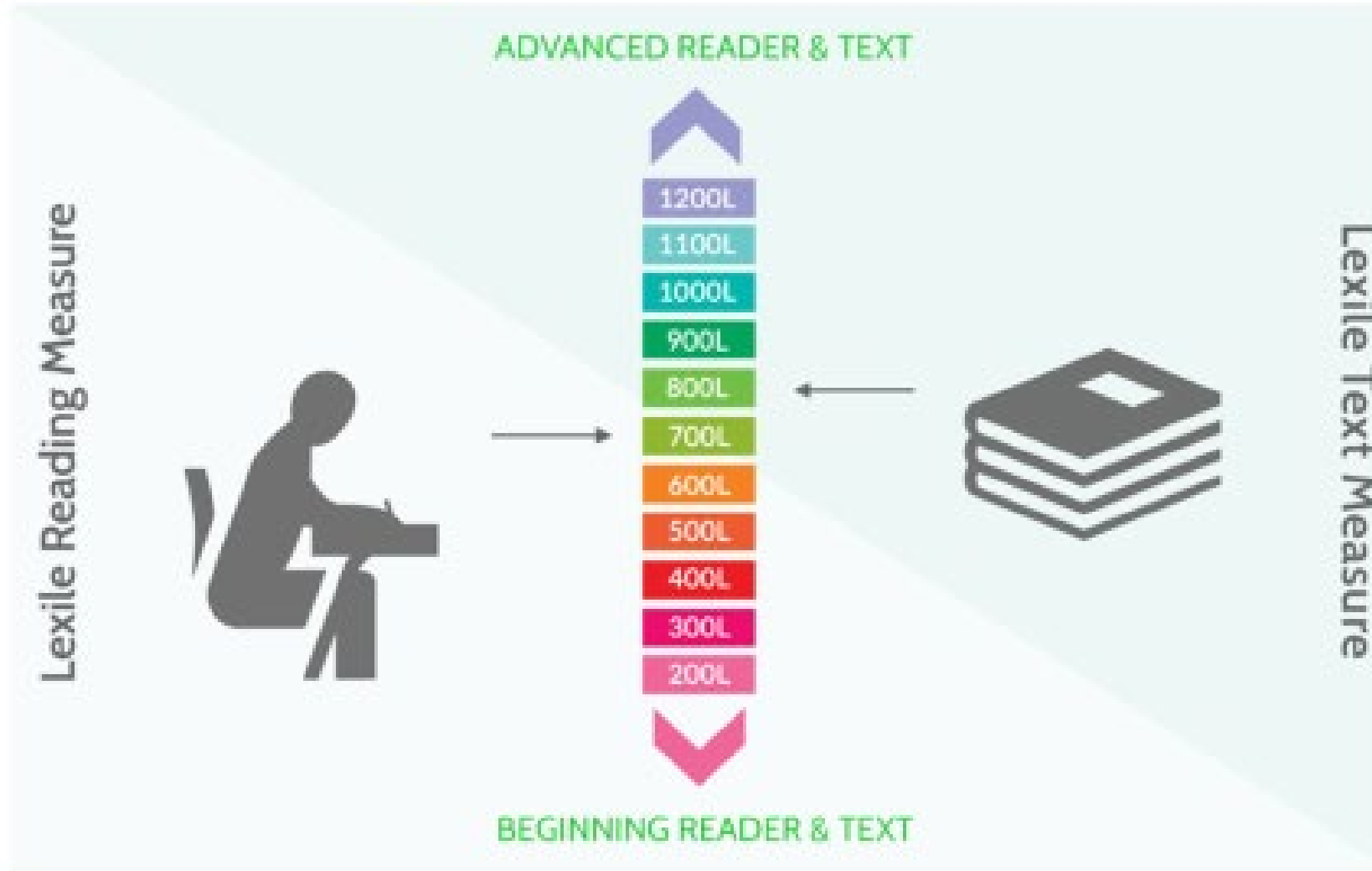
# Quick Review:

---

# Lexile Measures

# Lexile Measure

Your student's  
Lexile score:  
**660L**



# The Lexile Framework for Reading

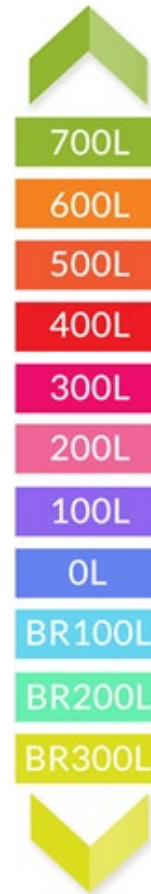
Lexile measures match readers and text on the same scale.

A Lexile reading measure represents a student's reading ability.

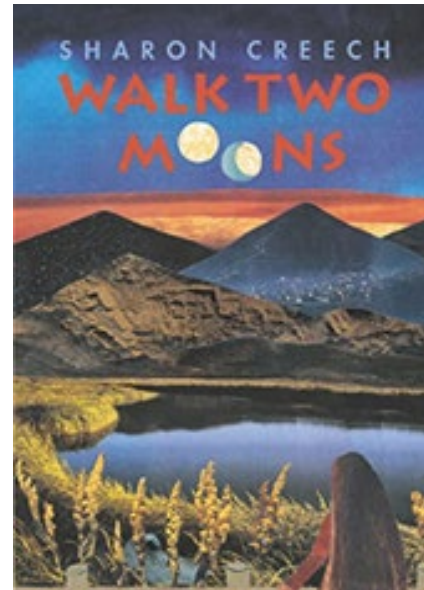
LEXILE READER MEASURE



770L



LEXILE TEXT MEASURE

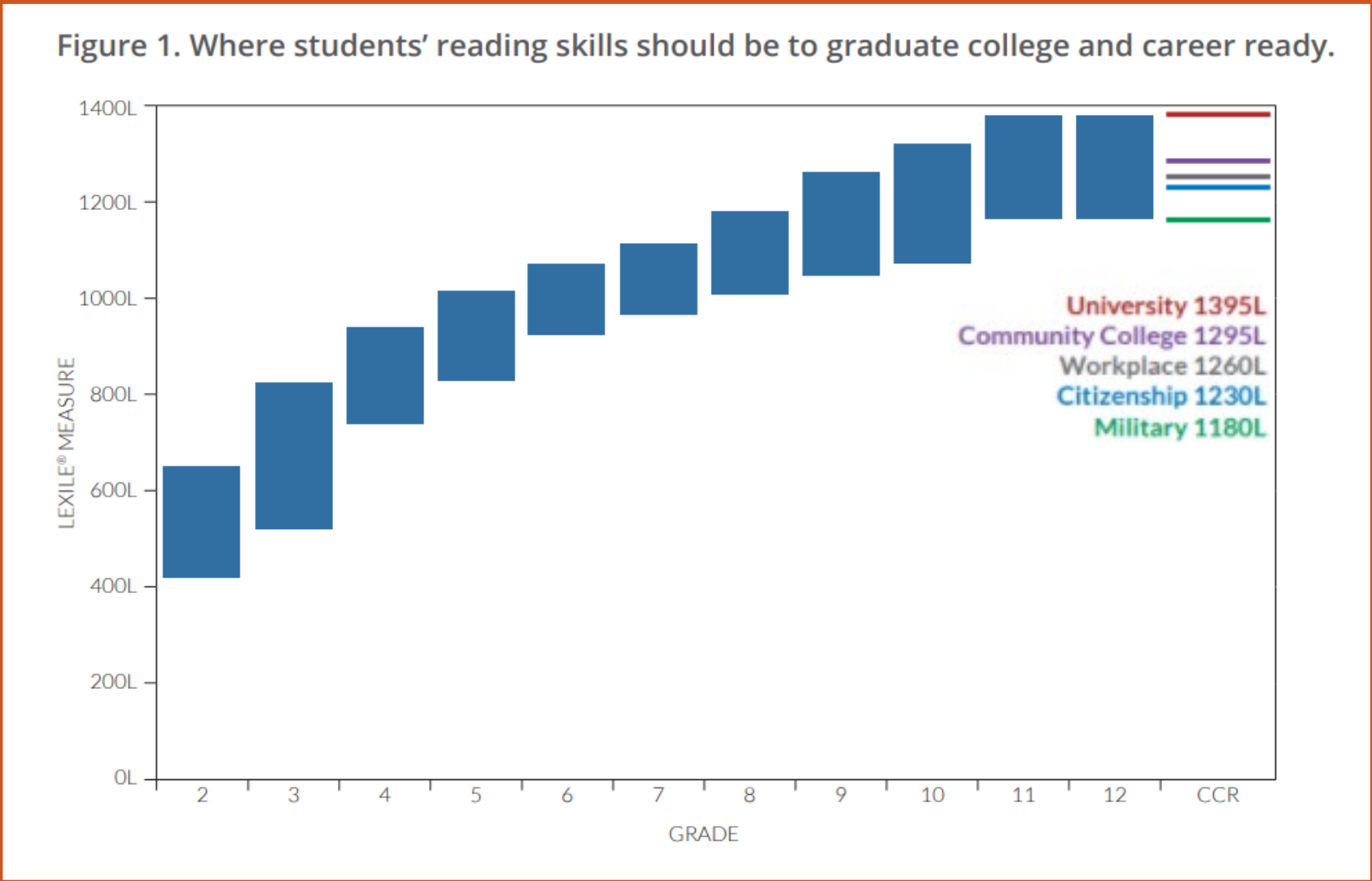


770L

A Lexile text measure represents its reading complexity.



# CCR Lexile score ranges by grade level



The blue box at each grade level represents the Lexile range needed to graduate career and college ready.

Source: [Charting New Growth Pathways](#)

# LEXILE & QUANTILE MEASURES OFFERED FOR HUNDREDS OF CAREERS

ELECTRICIAN

LEXILE MEASURE: 1270L

QUANTILE MEASURE: 980Q



CONSTRUCTION LABORER

LEXILE MEASURE: 1130L

QUANTILE MEASURE: 1000Q



WELDER

LEXILE MEASURE: 1175L

QUANTILE MEASURE: 1000Q





## Where Can You Find the Measures?

# Lexile scores add more information about a student's readiness and progress over time.

First Name	English Language Arts							
	OPI	Performance Level	Lexile Score	Reading/Writing Process	Critical Reading/Writing	Vocabulary	Language	Research
John031	320	Proficient	1075L	At/Near Standard	Above Standard	Above Standard	At/Near Standard	Below Standard
John031	248	Below Basic	585L	Below Standard	Below Standard	Below Standard	At/Near Standard	Below Standard
John014	283	Basic	815L	At/Near Standard	Below Standard	Below Standard	At/Near Standard	Below Standard
John014	325	Advanced	1110L	Above Standard	At/Near Standard	Above Standard	Above Standard	Above Standard
John021	310	Proficient	1005L	Above Standard	At/Near Standard	Above Standard	Above Standard	At/Near Standard
John062	269	Below Basic	715L	Below Standard	Below Standard	Below Standard	At/Near Standard	At/Near Standard

- **OPI:** pinpoints performance within the performance band
- **Performance Level:** relates degree of readiness for the next grade, course, or level relative to grade-level expectations
- **Lexile Score:** tracks a student's development of reading skills and abilities over time
- **Reporting Category:** relates where a student has strengths and where they may need extra support.

# Accessing your Lexile scores

Subject	Administration	Total N	Valid N
ELA	2021	2,143	2,026

Click on the Year under Administration in Group Report and then choose Drill to Roster, or choose the Roster Report

Program: OSTP

Report: Roster

Admin: ● 2021 2019 2018 2017

Grade: Grade 03 Grade 04 ● Grade 05 Grade 06 Grade 07

Release: ● Final Preliminary



# Accessing your Lexile scores

The screenshot shows a web interface for accessing Lexile scores. At the top, there is a navigation bar with icons for Options, Save, Download, Print, Roster, and Student. Below this, a 'Scores' tab is selected and highlighted with a red box. A blue arrow points from the 'Options' icon to the 'Scores' tab. Another blue arrow points from the 'Options' icon to the 'Lexile Score' column header in the table below. The table has columns for OPI, Performance Level, Lexile Score, and Quantile Score. The 'Lexile Score' column has a checkmark in the 'English Language Arts' row. Below the table, there are sections for 'English Language Arts Reporting Categories' with several categories checked, including 'Reading/Writing Process', 'Critical Reading/Writing', 'Vocabulary', 'Language', 'Research', and 'Writing Composite Score'.

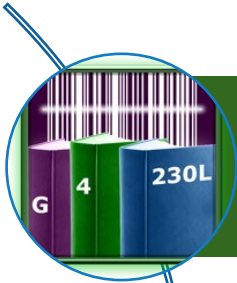
	OPI	Performance Level	Lexile Score	Quantile Score
English Language Arts	<input checked="" type="checkbox"/>	<input checked="" type="checkbox"/>	<input checked="" type="checkbox"/>	-
Mathematics	<input type="checkbox"/>	<input type="checkbox"/>	-	<input type="checkbox"/>
Science	<input type="checkbox"/>	<input type="checkbox"/>	-	-

English Language Arts Reporting Categories:  Reading/Writing Process,  Critical Reading/Writing,  Vocabulary,  Language,  Research,  Writing Composite Score

From the Options tool, click Scores, check Lexile Scores, and then click the Update button.

# Connecting Lexile Scores

# Questions to Consider



How do Lexile measures connect across assessments and what are the cautions?



What tools and resources does MetaMetrics offer in their Hub to support the work?



How do Lexile measures support career planning?

# Where Can Educators Find These Measures?

---

- Your state summative assessments
- Many interim/benchmark assessments used at the local level
- Many instructional programs





# Students can also receive LEXILE student measures from numerous partner products

Over 65 popular reading assessments & programs that report Lexile measures.

aimsweb

i-Ready®

empower  
assessments.



ETS® TOEFL Primary®

SRA  
FLEX  
LITERACY™

Istation

Imagine Learning®

myON™



KidBiz 3000™

nwea  
map®

STAR™  
Assessments

Performance Series™  
WEB-BASED DIAGNOSTICS

Reading  
Inventory™



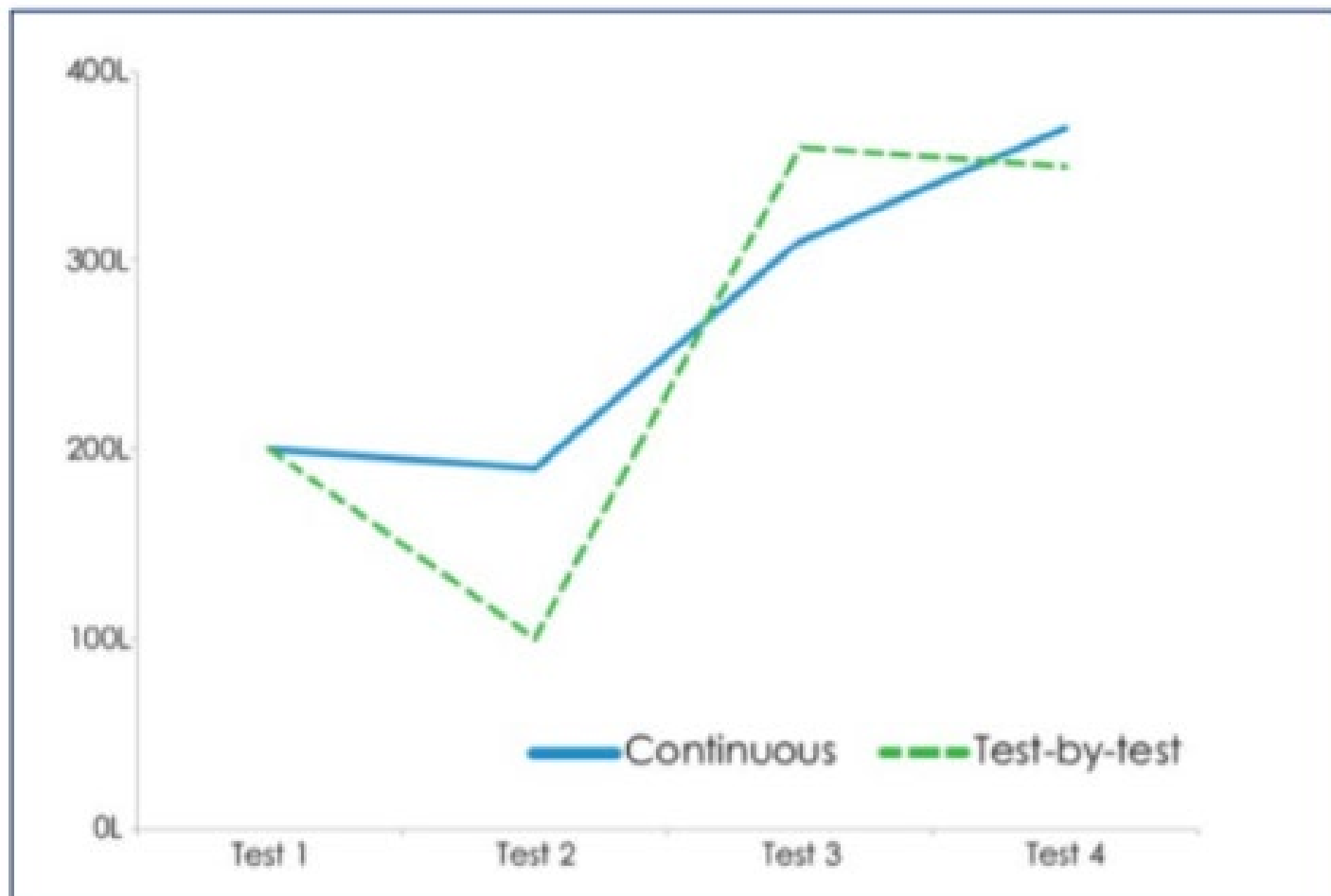


# Lexile Measures Across Assessments

Because Lexile measures offer a common scale across many different types of assessment (both interim and summative), they offer a unique opportunity to monitor student growth over time.

However, there are many issues to consider when using *any common scale* and this approach...

# Snapshots in Time



Monitoring student growth involves a series of “snapshots in time” not a smooth “motion picture.”

Score fluctuation is real.

# Score Fluctuation



## STUDENT FACTORS

- Motivation
- Attention
- Alertness
- State of mind
- Diet



## CONTEXTUAL FACTORS

- Test administration procedures
- Test security
- Distractions



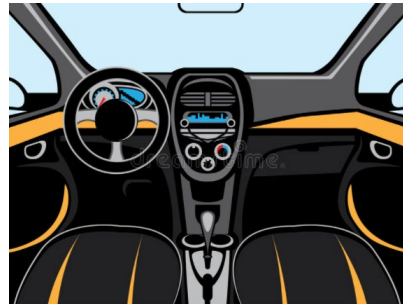
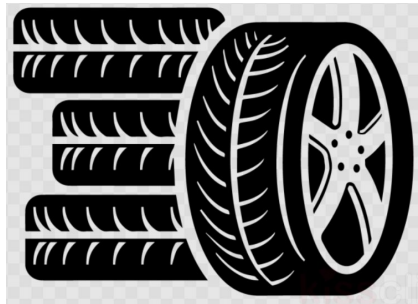
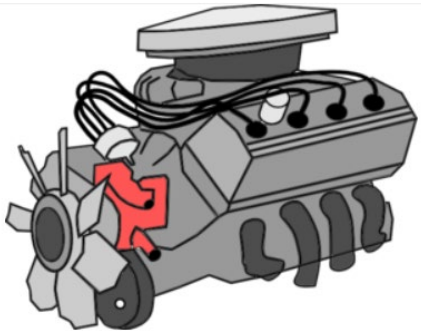
## TEST FACTORS

- Standard Error of Measurement
- Regression to the mean
- Purpose of the test
- Range restriction

# Interim vs. Summative

This fluctuation is particularly true when making comparisons that mix both summative and interim data.

Interim Assessment

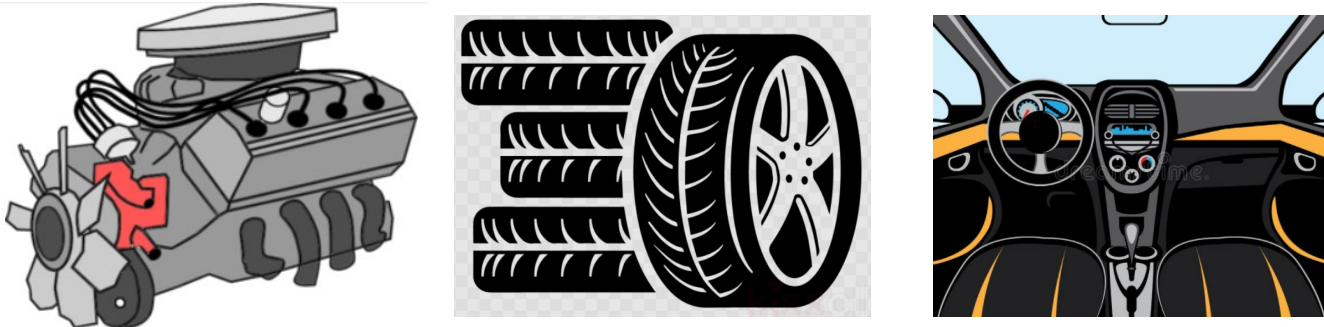


Summative Assessment



# Even *Similar* Assessments Are Not the Same

Interim Assessment



2005 Dodge Pick-Up

Summative Assessment



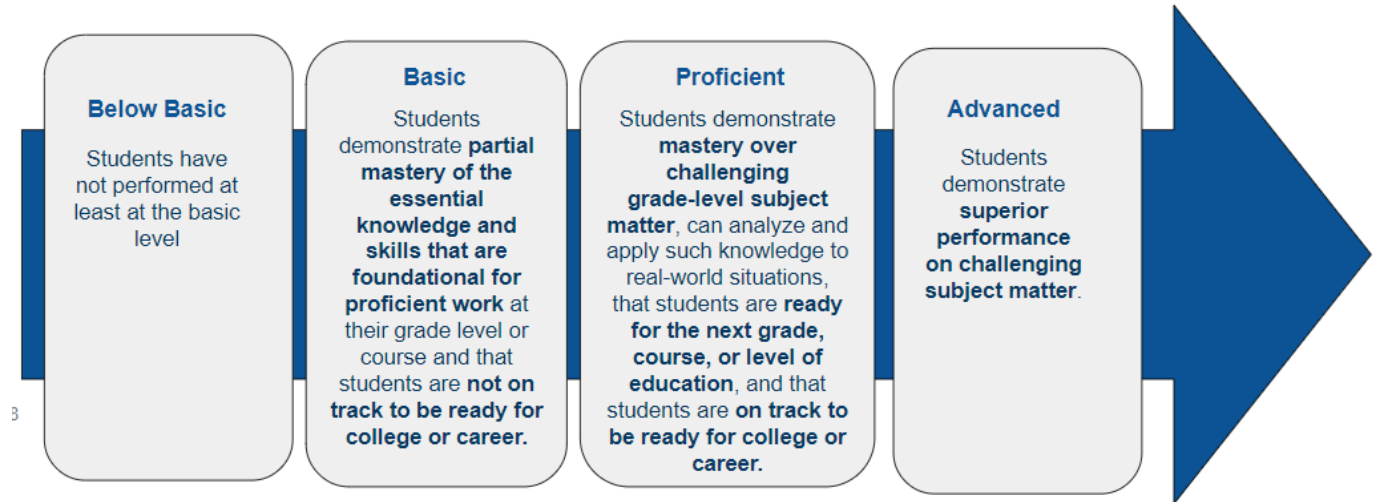
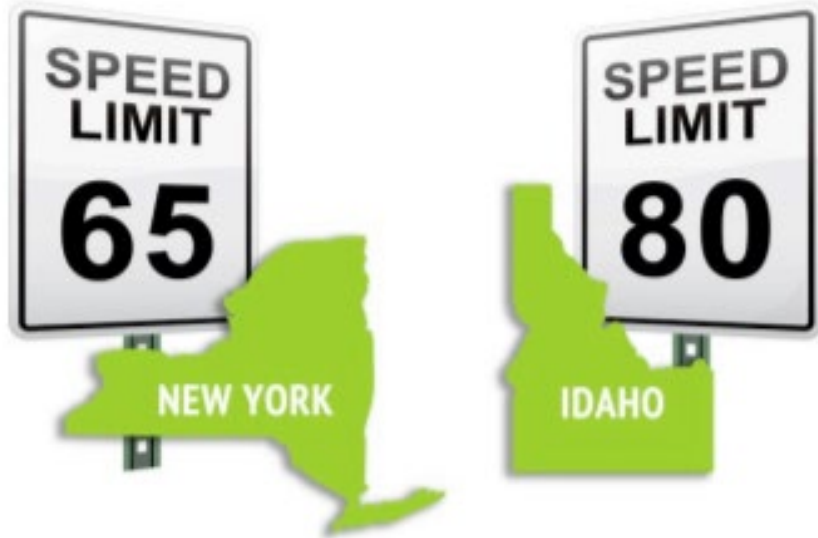
2021 Honda Accord



# Assessment vs. Evaluation

Even in an ideal world where we are *assessing* the exact same thing, our *evaluation* of those results may vary.

Miles Per Hour: Different Maximum Speed Limits



Source- [Senate Bill 1197](#)

# OSTP Performance Levels on the Lexile Scale

Regardless of the publisher of an interim assessment, we can use the state performance levels on the Lexile scale.



Oklahoma School Testing Program  
Performance Levels Reported in  
Lexile® Reading and Quantile® Measures



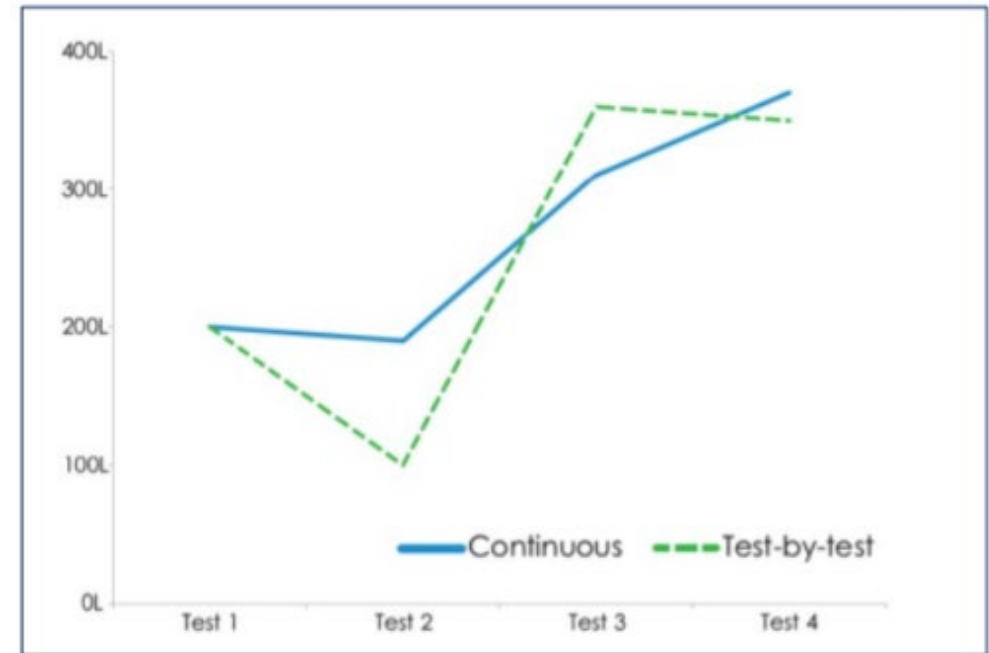
*Table 2. OSTP ELA performance levels reported in Lexile reading measures.*

Grade	Below Basic	Basic	Proficient	Advanced
3	535L and below	540L – 695L	700L – 890L	895L and above
4	690L and below	695L – 855L	860L – 1065L	1070L and above
5	725L and below	730L – 930L	935L – 1090L	1095L and above
6	825L and below	830L – 1045L	1050L – 1250L	1255L and above
7	955L and below	960L – 1105L	1110L – 1235L	1240L and above
8	1010L and below	1015L – 1210L	1215L – 1345L	1350L and above

# Suggestions....

When making comparisons of Lexile measures over time:

- Understand different assessments do different things...
- Use consistent *evaluation* criteria...
- Expect fluctuations to exist and embrace them!

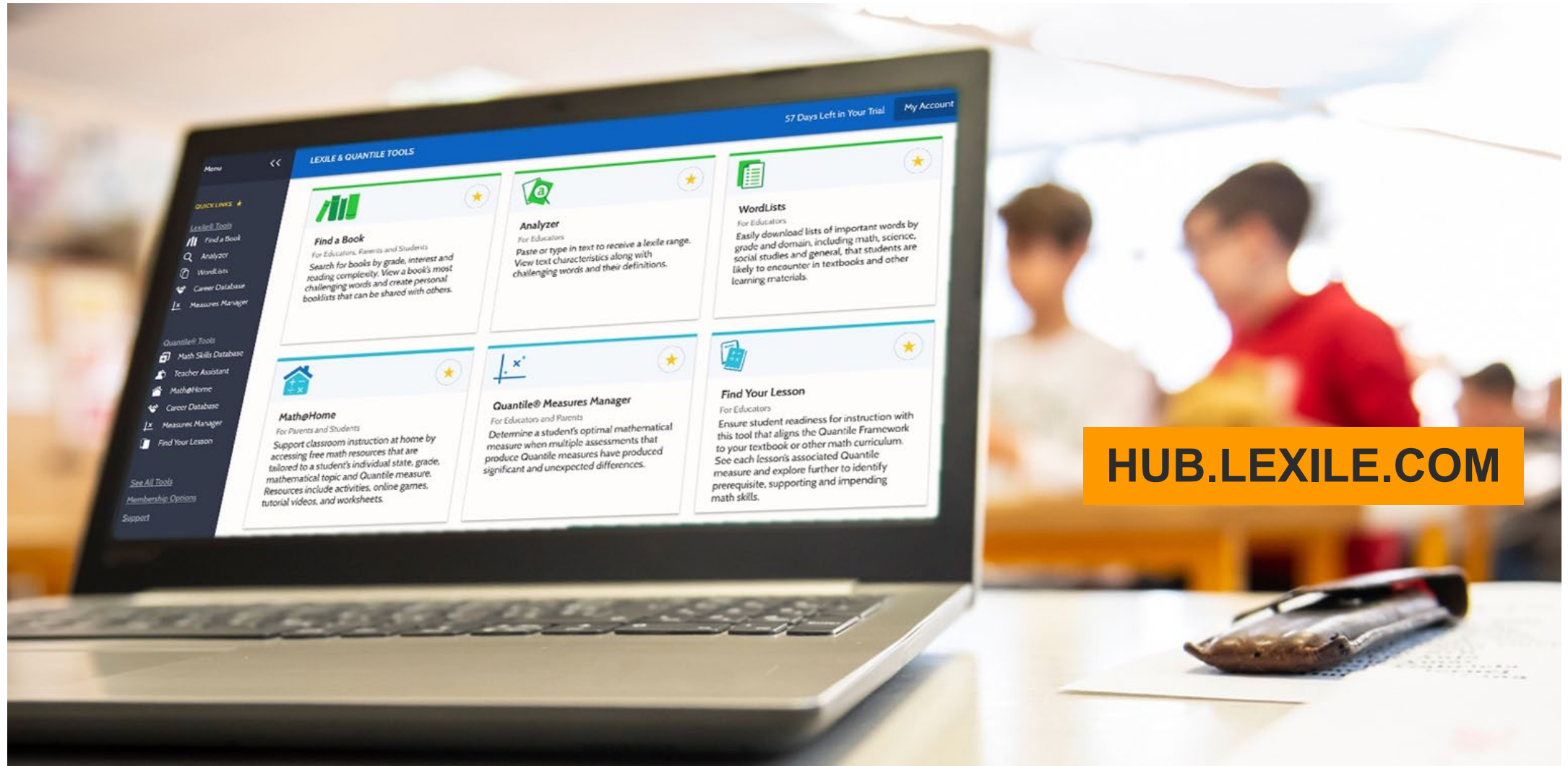




# Access the Hub



# Access the Hub





# Create Your Account

The screenshot shows the Lexile & Quantile Tools website interface. At the top right, the 'Register' button is highlighted with a red circle. The page features a dark sidebar with navigation options, a main content area with a banner for new guides, and a grid of tool cards for 'Find a Book', 'Analyzer', and 'WordLists'. A dropdown menu for 'All Tools' is visible in the top right of the main content area.

Menu << LEXILE & QUANTILE TOOLS

Register Sign In

All Tools

QUICK LINKS ★

Lexile® Tools

- Find a Book
- Analyzer
- WordLists

Quantile® Tools

- Math Skills Database
- Teacher Assistant
- Math@Home

See All Tools

Membership Options

Support

LEXILE QUANTILE

Have questions? Want answers?  
Check out the NEW Quick Start Guides and Tutorials.

LEXILE TOOLS

All Tools

**Find a Book**  
For Educators, Parents and Students  
Search for books by grade, interest and reading complexity. View a book's most challenging words and create personal booklists that can be shared with others.

**Analyzer**  
For Educators  
Paste or type in text to receive a lexile range. View text characteristics along with challenging words and their definitions.

**WordLists**  
For Educators  
Easily download lists of important words by grade and domain, including math, science, social studies and general, that students are likely to encounter in textbooks and other learning materials.

# Create Your Account

## QUICK LINKS ★

Lexile & Quantile  
Educator Academy

## Lexile® Tools

Find a Book

Text Analyzer

WordLists

## Quantile® Tools

Teacher Assistant

Math@Home

Math Skills Database

[See All Tools](#)

## Create an Account

Register for an account to access all free Basic+ features. Check out all features in [Membership Options](#).  
Are you a corporate partner of MetaMetrics Inc.? [Click here](#).

Fields with an \* are required.

Email Address \*

Password \*

Confirm Password \*

Country \*

State

Subscribe to join the conversation and receive newsletters, important notifications, and special invitations.

What is your role? \* (select the most applicable)

Students should proceed as an unregistered Basic user.



### Educator

You support student instruction and college and career readiness.



### Parent

You support your child's learning and college and career planning at home.



### Researcher

You are conducting research activities or in search of resources to support your interests.

### Our Partner States

If you are an **educator in a partner state**, use your school/district or state-issued email to receive complimentary access to Premium membership.



Create Account

By proceeding, you declare that you have read and agreed to our [Privacy Policy](#) and [Terms of Use](#).



LEXILE® & QUANTILE®  
**EDUCATOR ACADEMY** The NEW Lexile and Quantile Certification Courses provide professional development that fits your schedule. Enroll now!  
 SELF-PACED ONLINE

QUICK LINKS

- Lexile & Quantile Educator Academy
- Lexile® Tools
- Find a Book
- Grade Level Charts
- Text Analyzer
- Growth Planner
- Career Database
- WordLists
- Measures Manager

Quantile® Tools

- Summer Math Challenge
- Teacher Assistant
- Grade Level Charts
- Math@Home
- Math Skills Database
- Growth Planner
- Career Database
- Measures Manager
- Find Your Lesson

See All Tools

LEXILE TOOLS

All Tools ▾

**Find a Book**  
 For Educators, Parents and Students  
 Search for books by grade, interest and reading complexity. View a book's most challenging words and create a personal booklist that can be shared with others.

**Lexile® Grade Level Charts**  
 For Educators  
 View and print student Lexile measures by grade level. Filter your view by grade(s), time of year, and student population percentiles.

**Lexile® Text Analyzer**  
 For Educators  
 Paste or type in text to receive a Lexile range. View text characteristics along with challenging words and their definitions.

**Growth Planner**  
 For Educators and Students  
 Use Lexile measures to determine if a student is on track to graduate college-and-career ready. Access national and regional career data.

**Lexile® Career Database**  
 For Educators  
 Identify the reading demands needed for a desired career and use it to inform goal setting. The Lexile measure is the only metric available to compare and describe the reading demands of a career.

**WordLists**  
 For Educators  
 Download lists of important words by grade and domain, including math, science, social studies and general, that students are likely to encounter in textbooks and other learning materials.

**Lexile® Measures Manager**  
 For Educators  
 Determine a student's optimal reading measure when multiple assessments that produce Lexile measures have produced significant and unexpected differences.

# Lexile Tools of Particular Interest



## Growth Planner

For Educators and Students

Use Lexile measures to determine if a student is on track to graduate college-and-career ready. Access national and regional career data.



## Lexile® Grade Level Charts

For Educators

View and print student Lexile measures by grade level. Filter your view by grade(s), time of year, and student population percentiles.



## Lexile® Measures Manager

For Educators

Determine a student's optimal reading measure when multiple assessments that produce Lexile measures have produced significant and unexpected differences.



## Lexile® Career Database

For Educators

Identify the reading demands needed for a desired career and use it to inform goal setting. The Lexile measure is the only metric available to compare and describe the reading demands of a career.

# Questions?

Join us for Office Hours

**Every Monday** 2:00 - 3:00 p.m. ET

<https://zoom.us/j/94460177886>

**Every Friday** 11:00 a.m. - 12:00 p.m. ET

<https://zoom.us/j/98795024861>

We will be online to answer your questions!

Feel free to contact us with questions outside of  
our office hours:

[Jscott@lexile.com](mailto:Jscott@lexile.com) or

[Mcopeland@lexile.com](mailto:Mcopeland@lexile.com) or

[dbarnes@lexile.com](mailto:dbarnes@lexile.com)



# Next Echo

- Date: February 10, 2022  
Time: 3:30-4:30



- Topic: Connecting and Monitoring Learning in Math through a System of Assessment

