



# Statistical Analysis Center

## Selected Findings: Law Enforcement Officers Killed and Assaulted, 2024

April 23, 2026

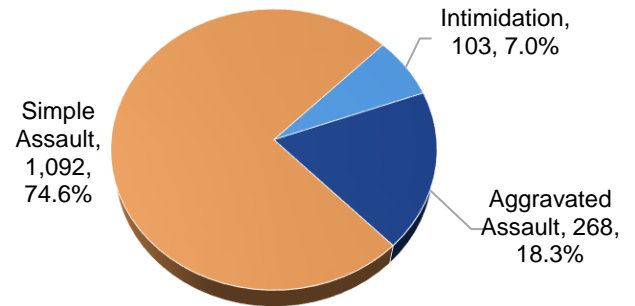
In the State Incident-Based Reporting System (SIBRS), law enforcement officers can be reported as a victim of Murder and Non-Negligent Manslaughter, Aggravated Assault, Simple Assault, and Intimidation. When a law enforcement officer is reported as a victim, additional Law Enforcement Officers Killed and Assaulted (LEOKA) data elements must be collected.

In 2024, no officers were killed and 1,463 officers were assaulted. Of the 1,463 officers assaulted, 74.6% were victims of Simple Assault, 18.3% were victims of Aggravated Assault, and the remaining 7.0% were victims of Intimidation (Figure 1). Figure 2 shows the number of officers assaulted by month and day of the week. May, October, and December were the most common months for assaults, while January, February, and September were the least common. The most common days of the week were Monday and Friday, while Wednesday was the least common day for an officer assault to occur.

As displayed in Figure 3, the number of assaults increased at 0000—0059 and 2000—2059, with additional increases at 0700—0759, 1000—1059, and 1400—1459. Beginning at 1100, the

number of assaults decreased consistently until 1400, when the assaults increased by 73.0%.

**Figure 1. Number of Officers by Offense Type**

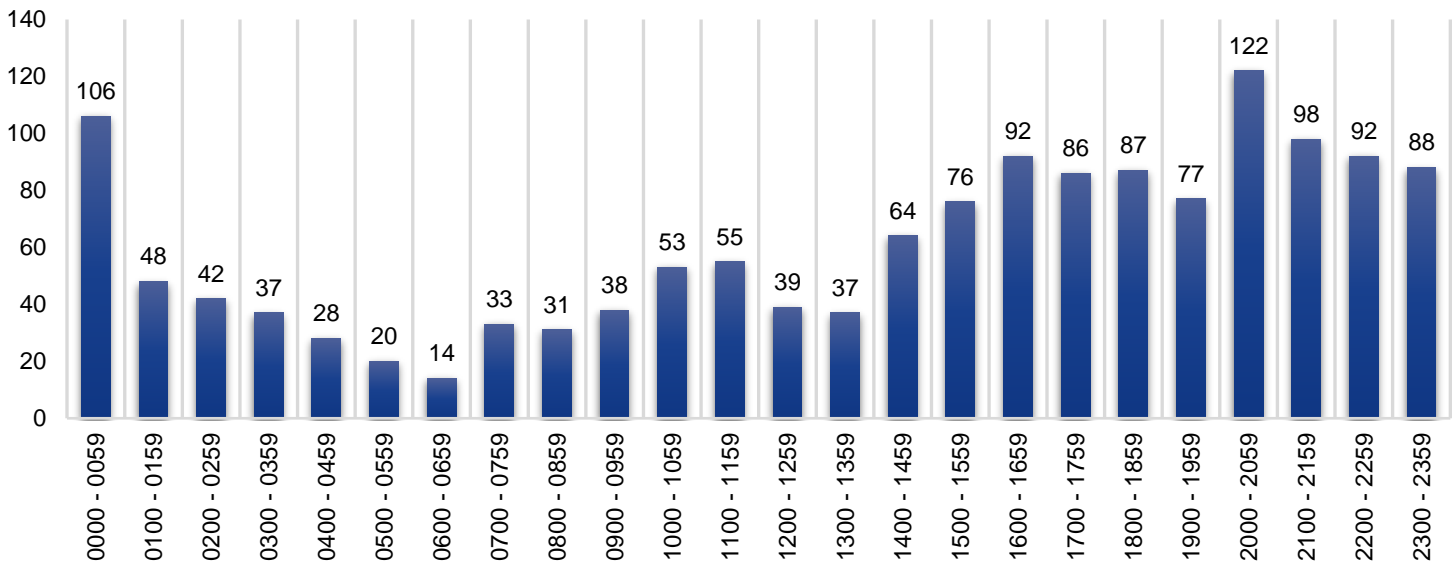


**Figure 2. Number of Officers by Month and Day of Week**

Month	Sun	Mon	Tue	Wed	Thu	Fri	Sat	Total
January	8	17	16	20	11	14	16	102
February	16	11	8	18	14	20	22	109
March	20	19	18	10	12	13	29	121
April	11	36	19	7	21	22	11	127
May	25	20	7	27	29	19	19	146
June	37	9	20	9	13	8	26	122
July	15	21	14	22	8	11	22	113
August	8	13	19	6	29	27	21	123
September	14	13	9	10	19	15	10	90
October	24	28	19	12	32	21	13	149
November	14	18	13	15	9	25	23	117
December	27	21	24	14	17	30	11	144
<b>Total</b>	<b>219</b>	<b>226</b>	<b>186</b>	<b>170</b>	<b>214</b>	<b>225</b>	<b>223</b>	<b>1,463</b>



**Figure 3. Number of Officers by Time of Day**



\*Note: 0000 – 0059 could indicate an unknown time of occurrence.

Table 1 presents the demographics of LEOKA officers and offenders. Of the 1,463 unique officers assaulted in 2024, 57.1% were Male, 33.6% the sex was reported as Unknown, and 9.2% were Female. The majority of officers were either White (58.2%), or the race was reported as Unknown (35.1%). For ethnicity, 60.4% of officers reported Unknown, 36.3% were Non-Hispanic, and 3.3% were Hispanic. Most officers' reported age range was either Unknown (40.8%), 20—29 (24.9%), or 30—39 (22.1%).

As shown in Table 1, there were 1,200 unique offenders involved in a LEOKA incident. Of the 1,200 offenders, 68.2% were Male, 31.5% were Female, and for the remaining 0.3%, the sex was reported as Unknown. The most common races reported were White, Black, and American Indian/Alaskan Native. Of the three types of

ethnicities reported, 60.8% were Non-Hispanic, 30.8% were Unknown, and 8.5% were Hispanic. Most offenders (71.6%) were between the age of 20 and 49 years old, and 11.3% were Under 18. Of the 1,200 offenders, 775 were reported as an Arrestee and 425 were reported as a Suspect. Of the 775 Arrestees, 667 were arrested On-View, 10 were Summoned/Cited, and 98 were Taken into Custody.

In addition to collecting demographic information for officers, SIBRS collects specific LEOKA-related information. Table 2 displays the type of assignment officers were on when the incident occurred. The majority of officers were assigned to either a One-Man Vehicle - Assisted (37.9%) or a One-Man Vehicle - Alone (32.3%).



**Table 1. Demographics of Officers and Offenders**

Category	Officers	Offenders
<b><u>Sex</u></b>		
Female	135	378
Male	836	818
Unknown	492	4
<b>Total</b>	<b>1,463</b>	<b>1,200</b>
<b><u>Age Range</u></b>		
Under 18	0	136
18 - 19	2	50
20 - 29	364	302
30 - 39	323	347
40 - 49	121	210
50 - 59	43	82
60 - 69	13	53
70 & Over	0	10
Unknown	597	10
<b>Total</b>	<b>1,463</b>	<b>1,200</b>
<b><u>Race</u></b>		
American Indian / Alaskan Native	46	152
Asian	4	7
Black	47	294
Native Hawaiian or Other Pacific Islander	1	0
Unknown	513	26
White	852	721
<b>Total</b>	<b>1,463</b>	<b>1,200</b>
<b><u>Ethnicity</u></b>		
Hispanic	48	102
Non-Hispanic	531	729
Unknown	884	369
<b>Total</b>	<b>1,463</b>	<b>1,200</b>

**Table 2. Number of Officers by Type of Assignment**

Type of Assignment	Count
One-Man Vehicle - Assisted	554
One-Man Vehicle - Alone	473
Other - Assisted	232
Two-Man Vehicle	91
Other - Alone	80
Detective or Special Assign. - Assisted	19
Detective or Special Assign. - Alone	14
<b>Total</b>	<b>1,463</b>

Table 3 displays the type of activity officers were engaged in at the time of the assault. The most common activity types were Handling, Transporting, Custody of Prisoners (21.1%), Responding to Disturbance Calls (19.8%), and Attempting Other Arrests (15.8%).

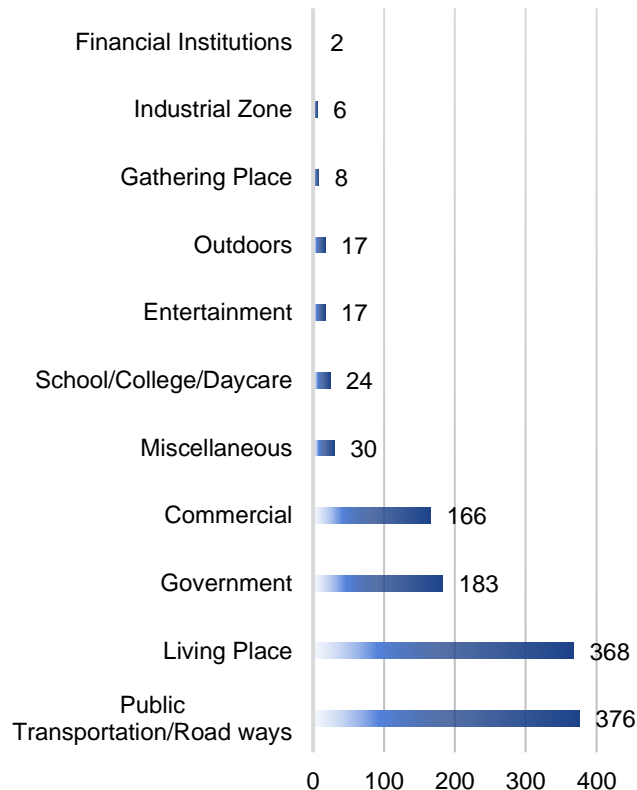
There were 1,197 unique LEOKA offenses in 2024. Figure 4 shows the number of offenses by Premise Type Grouping, of which Public Transportation/Road ways (31.4%) and Living Place (30.7%) were the most reported locations of officer assaults. The most common premise types, regardless of grouping, were Residence/Home (28.5%), Highway/Road/Alley (23.5%), and Jail/Prison (12.2%).



**Table 3. Number of Officers by Activity Type**

Type of Officer Activity	Count
Handling, Transporting, Custody of Prisoners	308
Responding to Disturbance Calls	289
Attempting Other Arrests	231
Drug Related	162
All Other	139
Traffic Pursuits and Stops	108
Investigating Suspicious Persons or Circumstances	103
Handling Persons with Mental Illness	69
Civil Disorder	20
Burglaries in Progress or Pursuing Burglary Suspects	16
Ambush-No Warning	16
Robberies in Progress or Pursuing Robbery Suspects	2
<b>Total</b>	<b>1,463</b>

**Figure 4. Number of Offenses by Premise Type Group**



**Table 4. Number of Weapon Types**

Weapon Type	Count
Physical	902
Other	80
Objects	73
None	50
Firearms	37
Unknown	5
Chemicals	1
<b>Total</b>	<b>1,148</b>

There were 1,148 types of weapons reported for LEOKA incidents. Due to the nature of Intimidation, it does not require a weapon type to be reported. Of the 1,148 weapon types reported, the most common weapon type category was Physical (78.6%). The Physical category includes Personal Weapons (Hands, Fists, Feet, Teeth, etc.) and Asphyxiation. The next most common weapon types reported were Other and Objects (i.e., Knife/Cutting Instruments, Blunt Objects, Motor Vehicles) (Table 4).