



# Statistical Analysis Center

## Selected Findings: Law Enforcement Officers Killed and Assaulted, 2023

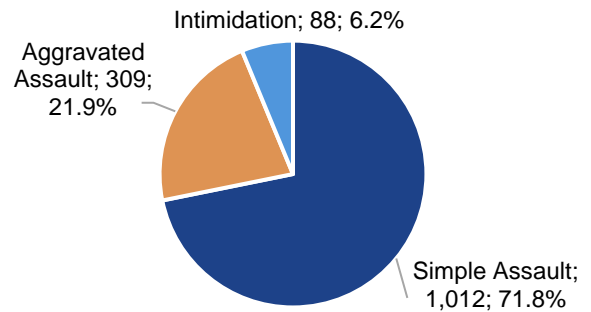
April 15, 2026

In the State Incident-Based Reporting System (SIBRS), law enforcement officers can be reported as a victim of Murder and Non-Negligent Manslaughter, Aggravated Assault, Simple Assault, and Intimidation. When a law enforcement officer is reported as the victim in an incident, additional LEOKA-related (Law Enforcement Officers Killed and Assaulted) data elements must be collected.

In 2023, no law enforcement officers were killed and 1,409 unique law enforcement officers were assaulted. Of the 1,409 officers assaulted, 71.8% were victims of Simple Assault, 21.9% were victims of Aggravated Assault, and the remaining 6.2% were victims of Intimidation (Figure 1). Figure 2 shows the number of officers assaulted by month and day of the week. May, July, and August were the most common months, while the least common months were February, October, and November. The highest number of assaults occurred on a Wednesday, while the lowest number occurred on a Tuesday.

The highest number of assaults occurred at Midnight (0000-0059); however, it should be noted that offenses reported at this hour could denote an unknown time. Beginning at 1000, the number of assaults on officers steadily increased (Figure 3).

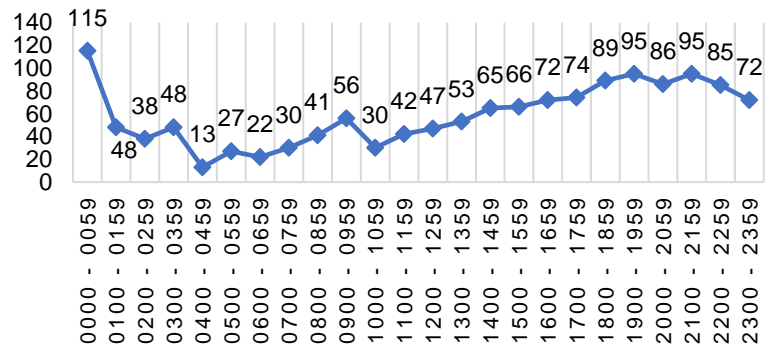
**Figure 1. Number of Officers by Offense**



**Figure 2. Number of Officers by Month and Day of Week**

Month	Sun	Mon	Tue	Wed	Thu	Fri	Sat	Total
January	21	11	23	13	20	18	18	124
February	18	14	6	22	13	12	12	97
March	22	15	9	25	26	24	15	136
April	13	19	14	8	18	3	29	104
May	10	18	19	40	12	18	23	140
June	18	13	13	14	21	21	21	121
July	21	24	12	20	9	30	24	140
August	18	10	17	28	18	20	31	142
September	11	13	10	11	21	24	18	108
October	10	12	18	13	8	19	10	90
November	20	9	11	13	16	15	11	95
December	19	16	6	23	12	22	14	112
<b>Total</b>	<b>201</b>	<b>174</b>	<b>158</b>	<b>230</b>	<b>194</b>	<b>226</b>	<b>226</b>	<b>1,409</b>

**Figure 3. Number of Officers by Time of Day**



\*Note: 0000 – 0059 could indicate an unknown time of occurrence



**Table 1. Demographics of Officers and Offenders**

Category	Officers	Offenders
<b><u>Sex</u></b>		
Female	157	374
Male	803	804
Unknown	449	5
<b>Total</b>	<b>1,409</b>	<b>1,183</b>
<b><u>Age Range</u></b>		
Under 18	0	121
18 - 19	2	47
20 - 29	347	333
30 - 39	326	362
40 - 49	142	197
50 - 59	48	74
60 - 69	9	38
70 & Over	0	6
Unknown	535	5
<b>Total</b>	<b>1,409</b>	<b>1,183</b>
<b><u>Race</u></b>		
American Indian / Alaskan Native	64	164
Asian	11	3
Black	44	313
Native Hawaiian or Other Pacific Islander	1	0
Unknown	474	26
White	815	677
<b>Total</b>	<b>1,409</b>	<b>1,183</b>
<b><u>Ethnicity</u></b>		
Hispanic	42	76
Non-Hispanic	494	757
Unknown	873	350
<b>Total</b>	<b>1,409</b>	<b>1,183</b>

Table 1 displays the demographics of officers and offenders involved in 2023 LEOKA incidents. Of the 1,409 officers assaulted, 57.0% were Male, 11.1% were Female, and for 31.9%, the sex was Unknown. The majority of officers were either White (57.8%) or reported Unknown for race (33.6%). For ethnicity, 62.0% of officers were reported as Unknown, followed by Non-Hispanic (35.1%) and Hispanic (3.0%). The most common age range was Unknown (38.0%), while 47.8% of officers were between the ages of 20—39 years old.

In 2023, there were 1,183 unique offenders who were involved in a LEOKA incident, of which 298 were Suspects and 885 were Arrestees. Of those 1,183 offenders, over two-thirds (68.0%) were Male, 31.6% were Female, and the remaining 0.4% were Unknown. Most offenders were White (57.2%), Black (26.5%), or American Indian/Alaskan Native (13.9%). The most common ethnicity of offenders was Non-Hispanic, followed by Unknown (29.6%) and Hispanic (6.4%). Three-quarters (75.4%) of offenders were between the ages of 20—49 years old.

LEOKA captures the type of assignment the officer was undertaking at the time of the incident (Table 2). The most common assignment was One-Man Vehicle – Assisted (36.4%), and the second most common was One-Man Vehicle – Alone (32.2%).



**Table 2. Number of Officers by Type of Assignment**

Type of Assignment	No. of Officers
One-Man Vehicle - Assisted	513
One-Man Vehicle - Alone	454
Other - Assisted	240
Two-Man Vehicle	92
Other - Alone	91
Detective or Special Assign. - Alone	10
Detective or Special Assign. - Assisted	9
<b>Total</b>	<b>1,409</b>

Table 3 shows the type of activity/circumstance the officer was engaged in at the time of the assault. The most common officer activity was Handling, Transporting, Custody of Prisoners (24.8%), followed by Responding to a Disturbance Call (18.2%) and Attempting Other Arrests (13.1%).

There were 1,169 unique offenses where officers were assaulted. The most common premise type groupings were Public Transportation/Road Ways (32.9%), Living Place (26.3%), and Government (19.5%) (Table 4). Without regard to the premise type groupings, the most common premise types reported were Highway/Road/Alley (25.4%), Residence/Home (24.6%), and Jail/Prison (15.8%).

**Table 3. Number of Officers by Activity**

Type of Officer Activity	No. of Officers
Handling, Transporting, Custody of Prisoners	350
Responding to Disturbance Call	257
Attempting Other Arrests	184
All Other	150
Drug Related	139
Traffic Pursuits and Stops	113
Investigating Suspicious Persons or Circumstances	99
Mentally Deranged Assailant	64
Burglaries in Progress or Pursuing Burglary Suspects	22
Civil Disorder	18
Ambush/No Warning	12
Robberies in Progress or Pursuing Robbery Suspects	1
<b>Total</b>	<b>1,409</b>

There were 1,124 weapon types reported in the LEOKA incidents. Due to the nature of Intimidation, a weapon type is not a required reporting field. The most common weapon type was Physical (i.e., Hands, Fists, Teeth, etc.) (75.8%), followed by Other (8.7%) and Objects (i.e., Motor Vehicle, Knife/Cutting Instrument, Blunt Object) (6.5%). The remaining weapon types reported included None, Firearms, and Unknown (Table 5).



**Table 4. Number of Offenses by Premise Type Group**

Premise Type Group	No. of Offenses
Public Transportation/Road Ways	385
Living Place	307
Government	228
Commercial	131
Miscellaneous	42
School/College/Daycare	30
Outdoors	21
Entertainment	14
Financial Institutions	4
Industrial Zones	4
Gathering Places	3
<b>Total</b>	<b>1,169</b>

**Table 5. Number of Weapon Types**

Weapon Type	Count
<b>Firearms</b>	<b>36</b>
Firearm (Not Specified)	9
Full Automatic Firearm	1
Handgun	18
Full Automatic Handgun	0
Rifle	4
Full Automatic Rifle	0
Shotgun	4
Full Automatic Shotgun	0
Other Firearm	0
Other Full Automatic Firearm	0
<b>Objects</b>	<b>73</b>
Knife/Cutting Instrument	22
Blunt Object	10
Motor Vehicle	41
<b>Physical</b>	<b>852</b>
Personal Weapons (Hands, Fists, Feet, Teeth, etc.)	850
Asphyxiation	2
<b>Chemicals</b>	<b>0</b>
Poison	0
Drugs/Narcotics/Sleeping Pills	0
<b>Other</b>	<b>98</b>
Explosives	0
Fire/Incendiary Device	0
Other	98
<b>None</b>	<b>61</b>
<b>Unknown</b>	<b>4</b>
<b>Total</b>	<b>1,124</b>