



# Statistical Analysis Center

## Selected Findings: Hate/Bias Crime, 2024

April 23, 2026

**Definition: A criminal offense committed against a person or property, which is motivated by the offender’s bias against race, religion, ethnic/national origin, sexual orientation, or disability.**

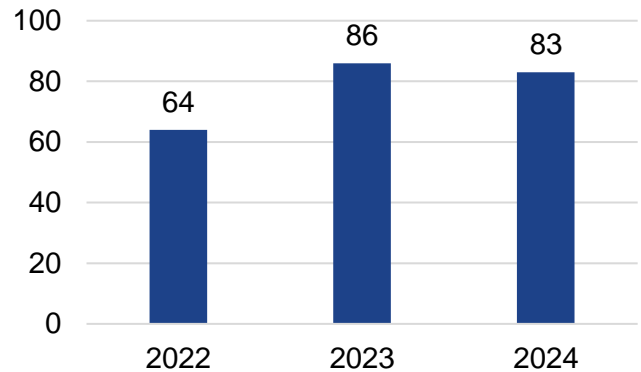
Per [Title 21 O.S. §850](#) the Oklahoma State Bureau of Investigation is required to collect Hate/Bias crime data. In 2024, law enforcement agencies reported 83 unique incidents of Hate/Bias crimes. The number of Hate/Bias incidents decreased by 3.5% since 2023, but increased by 29.7% from 2022 (Figure 1).

Figure 2 displays the type of Hate/Bias motivations reported in 2024. The most common Hate/Bias motivation reported was Race/Ethnicity/Ancestry (63.9%), followed by Religion (16.9%) and Sexual Orientation (15.7%). The remaining motivations reported were Gender Identity (2.4%) and Disability (1.2%).

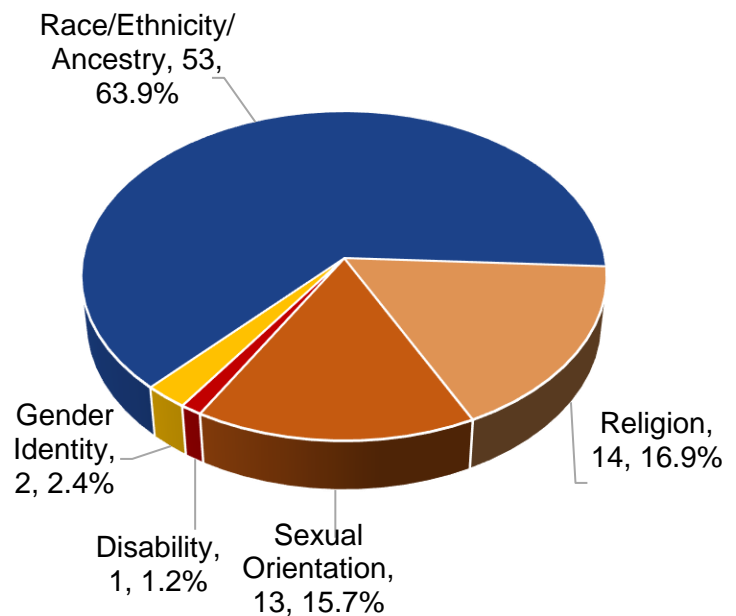
As shown in Figure 3, the highest number of Hate/Bias incident occurred in May and December, accounting for 25.3% of all incidents. Over half (51.8%) of Hate/Bias incidents occurred between the months of August and December. In addition, Tuesday and Friday were the most common days of the week for Hate/Bias incidents, and the fewest occurred on Wednesday. Nearly two thirds of

Hate/Bias incidents occurred from 1300—2359, with notable increases at 1500—1559 and 2000—2059 (Figure 4).

**Figure 1. Number of Hate/Bias Incidents per Year**



**Figure 2. Number of Hate/Bias Motivation**

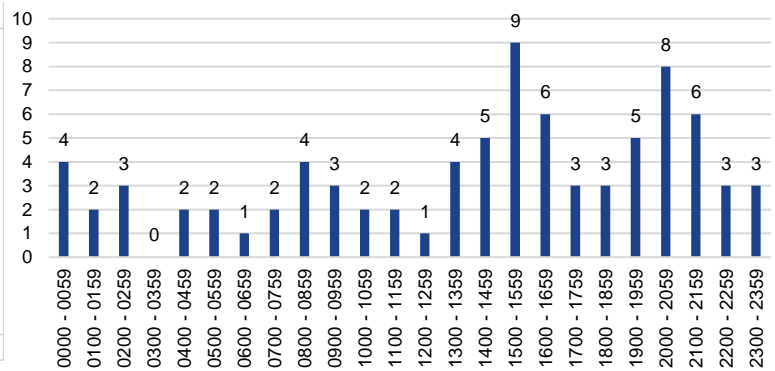




**Figure 3. Number of Hate/Bias Incidents per Month and Day of Week**

Month	Sunday	Monday	Tuesday	Wednesday	Thursday	Friday	Saturday	Total
January		1	3				1	5
February			1	1	1	1		4
March	1	1			1	1		4
April	1	1		2	2	1		7
May	2	3	1	1	1	1	2	11
June						1	3	4
July		2	1	1		1		5
August			1	1	1	6		9
September	4	1	2		1	1		9
October			1	1	2	1	2	7
November	1	1	1	1	1	3		8
December	1	1	2		2	1	3	10
<b>Total</b>	<b>10</b>	<b>11</b>	<b>13</b>	<b>8</b>	<b>12</b>	<b>18</b>	<b>11</b>	<b>83</b>

**Figure 4. Number of Hate/Bias Incidents by Time of Day**



\*The hour of 0000 – 0059 could indicate an unknown time of occurrence

In 2024, there were 106 unique victims reported in Hate/Bias incidents (Table 1). The majority of victims were Individuals (88.7%), followed by Society/Public (4.7%), and Business (2.8%).

Table 2 shows the demographics of the 94 “Individual” victims. The majority were Male (55.3%), followed by Female (40.4%), and for the remaining 4.3% of person victims, the sex was reported as Unknown. The majority (83.0%) of victims were either White or Black, and the ethnicity was reported as Unknown (48.9%) for victims. The most common age ranges were Under 18, 20 — 29, and 40 — 49. Over half (51.1%) of victims were between the ages of 20 and 49 years old.

In addition, Table 2 displays the demographics for the 97 unique offenders reported in Hate/Bias incidents. For those offenders, 70.1% were Male, 18.6% were Female, and for the remaining 11.3%, the sex was reported as

Unknown. The majority (86.6%) of offenders were either White or the race was reported as Unknown. Unknown was the most common ethnicity reported (47.4%), followed by Non-Hispanic (46.4%) and Hispanic (6.2%). Over 60.0% of offenders were either Under 18 years old, between 40 and 49 years old, or the age was Unknown.

Of the 83 Hate/Bias incidents, there were 106 unique crimes reported with a Hate/Bias motivation. Table 3 displays all crimes reported in conjunction with a Hate/Bias motivation.



**Table 1. Number of Hate/Bias Crime Victims by Type of Victim**

Type of Victim	No. of Victims	% of Total
Business	3	2.8
Government	2	1.9
Individual	94	88.7
Religious Org.	2	1.9
Society / Public	5	4.7
<b>Total</b>	<b>106</b>	<b>100.0</b>

**Table 2. Number of Person Victims and Offenders**

Category	No. of Victims	No. of Offenders
<b>Sex</b>		
Female	38	18
Male	52	68
Unknown	4	11
<b>Total</b>	<b>94</b>	<b>97</b>
<b>Age Range</b>		
Under 18	16	18
18 - 19	1	4
20 - 29	19	9
30 - 39	14	13
40 - 49	15	18
50 - 59	8	7
60 - 69	10	3
70 & Over	2	1
Unknown	9	24
<b>Total</b>	<b>94</b>	<b>97</b>
<b>Race</b>		
American Indian / Alaskan Native	4	5
Asian	1	2
Black	23	6
Native Hawaiian or Other Pacific Islander	1	0
Unknown	10	23
White	55	61
<b>Total</b>	<b>94</b>	<b>97</b>
<b>Ethnicity</b>		
Hispanic	8	6
Non-Hispanic	40	45
Unknown	46	46
<b>Total</b>	<b>94</b>	<b>97</b>



**Table 3. Number of Hate/Bias Crimes**

Crime Category	Offense	Count	% of Total
<b>Crimes Against Persons (No. of Unique Victims)</b>	Sexual Assault With An Object	1	0.9
	Aggravated Assault	9	8.5
	Simple Assault	24	22.6
	Intimidation	46	43.4
	<b>Crimes Against Persons Total</b>	<b>80</b>	<b>75.5</b>
<b>Crimes Against Property (No. of Unique Offenses)</b>	Robbery	1	0.9
	Motor Vehicle Theft	1	0.9
	Destruction/Damage/Vandalism of Property	10	9.4
	Fraud*	3	2.8
	Larceny^	2	1.9
	<b>Crimes Against Property Total</b>	<b>17</b>	<b>16.0</b>
<b>Crimes Against Society (No. of Unique Offenses)</b>	Drug/Narcotic Violations	1	0.9
	Weapon Law Violations	2	1.9
	<b>Crimes Against Society Total</b>	<b>3</b>	<b>2.8</b>
<b>Group B Offenses (No. of Unique Arrestees)</b>	Disorderly Conduct	2	1.9
	Drunkenness	4	3.8
	<b>Group B Offenses Total</b>	<b>6</b>	<b>5.7</b>
<b>Total</b>		<b>106</b>	<b>100.0</b>

\*Fraud includes False Pretenses/Swindle/Confidence Game, Credit Card/Automated Teller Machine Fraud, Impersonation, Welfare Fraud, Wire Fraud, Identity Theft, Hacking/Computer Invasion

^Larceny - Theft includes Pocket-picking, Purse-Snatching, Shoplifting, Theft from Building, Theft from Coin-Operated Device or Machine, Theft from Motor Vehicle, Theft of Motor Vehicle Parts or Accessories, All Other Larceny