



# Statistical Analysis Center

## Selected Findings: Domestic Abuse, 2024

April 23, 2026

Per [Title 74 O.S. §150.12B](#), the Oklahoma State Bureau of Investigation is required to publish Domestic Abuse data. In 2024, law enforcement agencies reported 29,149 unique incidents of Domestic Abuse. For an incident to be considered Domestic Abuse, the incident must include at least one Domestic Abuse offense **and** at least one Domestic Abuse victim-to-offender relationship type.

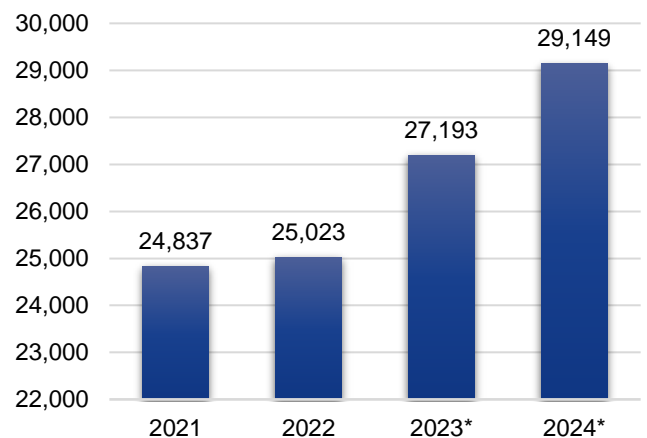
Domestic Abuse offenses include: Murder and Non-Negligent Manslaughter, Negligent Manslaughter, Justifiable Homicide, Aggravated Assault, Simple Assault, Intimidation, Forcible Rape, Forcible Sodomy, Sexual Assault with an Object, Forcible Fondling, and Kidnapping/Abduction.

Domestic victim-to-offender relationships include: Adoptive/Foster Child, Adoptive/Foster Parent, Biological Parents of Same Child, Boyfriend/Girlfriend, Child, Child of Boyfriend/Girlfriend, Common-Law Spouse, Ex-Spouse, Grandchild, Grandparent, Homosexual Relationship, In-Law, Other Family Member, Parent, Roommate, Ex-Roommate\*, Sibling, Spouse, Spouse of Ex-Spouse, Stepchild, Stepparent, and Stepsibling. It should be noted that in 2023, the relationship type of Ex-Roommate was added to the list of domestic victim-to-offender relationship types based on a statute change.

From 2023 to 2024, there was a 7.2% increase in Domestic Abuse incidents. This continues the increases noted in 2023 (8.7%) and 2022 (0.7%). When comparing 2024 to 2021, there was a 17.4% increase (Figure 1). Of the 29,149 incidents, there were 33,581 unique person victims, 33,068 unique offenses, and 31,294 unique offenders.

In 2024, the highest number of incidents occurred in May and June, while lowest number occurred in February and November. Sunday and Saturday were the most common days of the week reported, while Wednesday and Thursday were the least common days in 2024 (Figure 2).

**Figure 1. Number of Incidents per Year, 2021 - 2024**



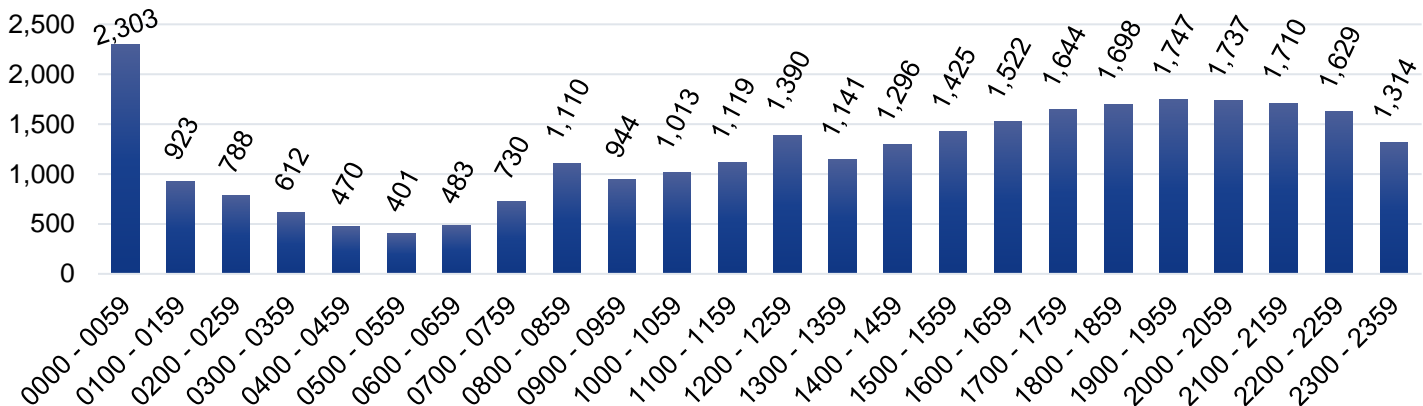
\*Ex-Roommate was added in 2023 per [22 O.S. § 60.1](#), which passed in November 2022.



**Figure 2. Number of Incidents by Month and Day of Week**

Month	Sunday	Monday	Tuesday	Wednesday	Thursday	Friday	Saturday	Total
January	303	470	335	352	274	287	267	2,288
February	316	317	247	271	414	319	338	2,222
March	455	310	301	282	299	393	408	2,448
April	364	444	407	328	331	329	356	2,559
May	364	336	341	404	372	403	358	2,578
June	484	352	339	287	330	355	512	2,659
July	346	392	365	363	287	316	335	2,404
August	362	301	299	337	394	414	440	2,547
September	493	408	319	286	305	323	366	2,500
October	339	288	416	330	396	330	362	2,461
November	333	285	245	240	277	393	400	2,173
December	421	349	384	293	256	281	326	2,310
<b>Total</b>	<b>4,580</b>	<b>4,252</b>	<b>3,998</b>	<b>3,773</b>	<b>3,935</b>	<b>4,143</b>	<b>4,468</b>	<b>29,149</b>

**Figure 3. Number of Incidents by Time of Day**



\*Note: 0000 - 0059 could indicate an unknown time.

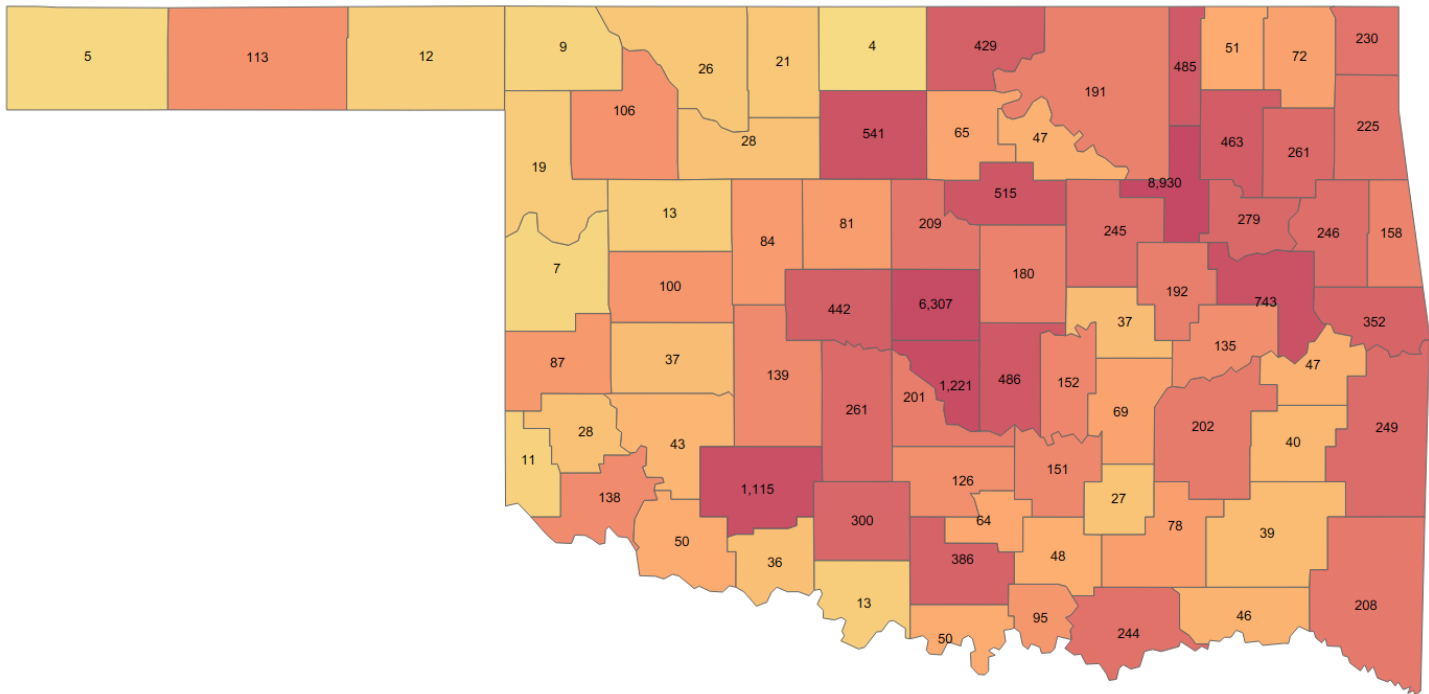
In 2024, midnight (0000 - 0059) was the most reported time of day for Domestic Abuse incidents (Figure 3). However, 0000 - 0059 could indicate an unknown time of occurrence. Approximately 54.0% of Domestic Abuse incidents occurred between 1400 and 2359. The lowest number of incidents occurred between 0100 to 0759, followed by an increase at

0800. Beginning at 0600, the number of incidents per hour increased steadily with notable increases at 0800 and 1200 followed by decreases at 0900 and 1300.

Figure 4 displays the number of Domestic Abuse incidents per county in 2024, of which Oklahoma and Tulsa reported the highest number of Domestic Abuse incidents.



**Figure 4. Number of Domestic Abuse Incidents by County**



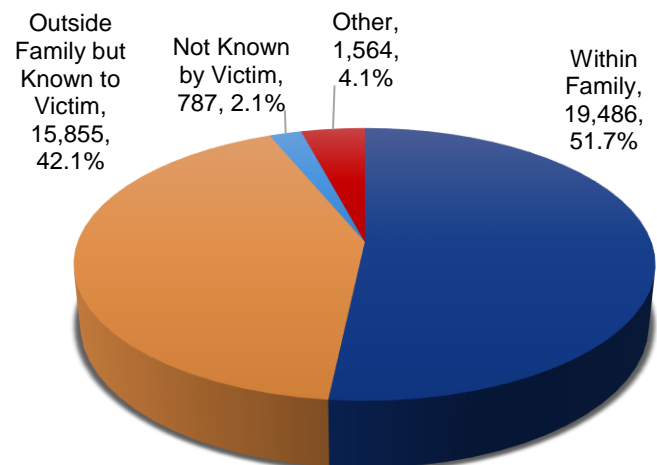


**Table 1. Victim & Offender Demographics**

Category	Victims	Offenders
<b><u>Sex</u></b>		
Female	23,212	8,884
Male	10,103	22,281
Unknown	266	129
<b>Total</b>	<b>33,581</b>	<b>31,294</b>
<b><u>Age Range</u></b>		
Under 18	5,918	2,402
18 - 19	1,250	1,068
20 - 29	7,387	7,674
30 - 39	7,714	8,836
40 - 49	5,409	6,006
50 - 59	2,905	2,775
60 - 69	1,711	1,215
70 & Over	822	411
Unknown	465	907
<b>Total</b>	<b>33,581</b>	<b>31,294</b>
<b><u>Race</u></b>		
American Indian / Alaskan Native	2,679	2,372
Asian	309	261
Black	6,876	7,902
Native Hawaiian or Other Pacific Islander	60	44
Unknown	1,247	1,229
White	22,410	19,486
<b>Total</b>	<b>33,581</b>	<b>31,294</b>
<b><u>Ethnicity</u></b>		
Hispanic	2,396	2,311
Non-Hispanic	15,013	14,494
Unknown	16,172	14,489
<b>Total</b>	<b>33,581</b>	<b>31,294</b>

For the 33,581 victims, a total of 37,692 victim-to-offender relationship types were reported. The four categories of Victim-to-Offender Relationships are shown in Figure 5 of which 51.7% of offenders were Within the Family, 42.1% of offenders were Outside Family but Known to Victim, 4.1% of offenders were Other (either the victim was also an offender or was a victim of an offense that does not require a relationship type to be reported), and 2.1% of offenders were Not Known by Victim. Regardless of category, the most common victim-to-offender Relationship types reported were Boyfriend/Girlfriend (24.9%), Spouse (11.1%), and Child (10.5%).

**Figure 5. Number of Victim-to-Offender Relationships**





Most of the previously listed Domestic Abuse offenses require a weapon type to be reported, with the exception of Intimidation. As shown in Table 2, there were 26,733 types of weapons reported, categorized by weapon type. The most common weapon type reported was Physical (77.0%). The Physical weapon type category includes Personal Weapons (Hands, Fists, Feet, etc.) and Asphyxiation. Other weapon type categories included Objects (7.3%), None (5.1%), Other (5.1%), Firearms (3.8%), Unknown (1.5%), and Chemicals (0.2%).

For the 33,068 offenses included in the Domestic Abuse incidents, the most common premise type groupings included: Living Place, Public Transportation/Roadways, Commercial, and Miscellaneous. The highest reported premise type, regardless of grouping, was Residence/Home, accounting for 27,471 offenses.

**Table 2. Number of Weapon Types**

Weapon Type	Count
Physical	20,597
Objects	1,951
None	1,373
Other	1,364
Firearms	1,004
Unknown	398
Chemicals	46
<b>Total</b>	<b>26,733</b>

**Table 3. Number of Offenses by Premise Type**

Premise Type Grouping	No. of Offenses
Living Place	28,012
Public Transportation/Roadways	2,513
Commercial	834
Miscellaneous	803
Outdoors	262
School/College/Daycare	239
Government	154
Entertainment	140
Gathering Places	55
Industrial Zone	46
Financial Institutions	10
<b>Total</b>	<b>33,068</b>



**Table 4. Crimes Reported in Domestic Abuse Incidents**

Offense Types	Count
<b>Crimes Against Persons</b>	<b>33,652</b>
Murder & Non-Negligent Manslaughter	64
Negligent Manslaughter	17
Justifiable Homicide	1
Aggravated Assault	5,594
Simple Assault	20,647
Intimidation	5,099
Forcible Rape	600
Forcible Sodomy	189
Sexual Assault with Object	88
Forcible Fondling	879
Incest	1
Statutory Rape	2
Human Trafficking - Commercial Sex Act	1
Human Trafficking - Involuntary Servitude	1
Kidnapping/Abduction	469
<b>Crimes Against Property</b>	<b>1,226</b>
Arson	28
Bribery	2
Burglary/Breaking & Entering	320
Counterfeiting/Forgery	2
Destruction/Damage/Vandalism of Property	596
Embezzlement	7
Extortion/Blackmail	7
False Pretenses/Swindle/Confidence Game	8
Credit Card/ATM Fraud	5
Impersonation	3
Wire Fraud	2
Identity Theft	4
Hacking/Computer Invasion	2
Pocket-Picking	7
Purse-Snatching	1
Shoplifting	2
Theft from Building	36
Theft from Motor Vehicle	13
Theft of Motor Vehicle Parts or Accessories	4
All Other Larceny	97
Motor Vehicle Theft	57
Robbery	10
Stolen Property Offenses	13

Offense Types	Count
<b>Crimes Against Society</b>	<b>643</b>
Drug/Narcotic Violations	201
Drug Equipment Violations	105
Pornography/Obscene Materials	40
Prostitution	2
Assisting or Promoting Prostitution	1
Weapon Law Violations	270
Animal Cruelty	24
<b>Group B Offenses</b>	<b>1,466</b>
Curfew/Loitering/Vagrancy Violations	1
Disorderly Conduct	152
Driving Under the Influence	75
Drunkenness	285
Family Offenses, Nonviolent	71
Liquor Law Violations	31
Peeping Tom	2
Runaway	3
Trespass of Real Property	29
All Other Offenses	817

- Crimes Against Persons:
  - Counted by the number of **unique** victims in the incident.
- Crimes Against Property:
  - Counted by the number of **unique** offenses in the incident with the exception of Motor Vehicle Theft.
  - Motor Vehicle Theft is counted by the number of **attempted** motor vehicle thefts and the number of **stolen** motor vehicles.
- Crimes Against Society:
  - Counted by the number of **unique** offenses in the incident.
- Group B Offenses:
  - **For this report:** counted by the **unique** arrestees in the incident associated with a Group B offense.