



Statistical Analysis Center

Selected Findings: Domestic Abuse, 2023

April 15, 2026

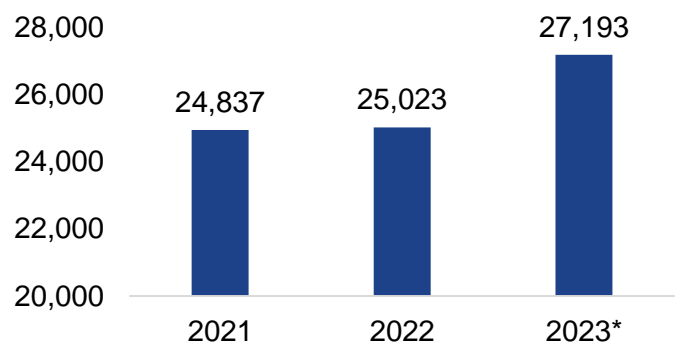
Per [Title 74 O.S. §150.12B](#), the Oklahoma State Bureau of Investigation is required to publish Domestic Abuse data. In 2023, law enforcement agencies reported 27,193 unique incidents that had a domestic abuse offense **and** at least one domestic victim-to-offender relationship.

Domestic Abuse offenses include: Murder and Non-Negligent Manslaughter, Negligent Manslaughter, Justifiable Homicide, Forcible Rape, Forcible Sodomy, Sexual Assault with an Object, Forcible Fondling, Aggravated Assault, Simple Assault, Intimidation, and Kidnapping/Abduction.

Domestic victim-to-offender relationships include: Adoptive/Foster Child, Adoptive/Foster Parent, Biological Parents of Same Child, Boyfriend/Girlfriend, Child, Child of Boyfriend/Girlfriend, Common-Law Spouse, Ex-Spouse, Grandchild, Grandparent, Homosexual Relationship, In-Law, Other Family Member, Parent, Roommate, Ex-Roommate*, Sibling, Spouse, Spouse of Ex-Spouse, Stepchild, Stepparent, and Stepsibling.

The 27,193 unique incidents reported in 2023 is an 8.7% increase from 2022 and a 9.5% increase from 2021 (Figure 1). For the 27,193 incidents reported in 2023, there were 31,077 unique victims, 30,905 unique offenses, and 29,058 unique offenders.

Figure 1. Number of Incidents by Year, 2021-2023



*Ex-Roommate was added in 2023 per [22 O.S. § 60.1](#) in November 2022

Table 1 displays the demographics of all victims and offenders involved in a Domestic Abuse incident. For the 31,077 unique victims, 70.0% were Female, 29.3% were Male, and for 0.7% the sex was Unknown. White (67.7%), Black (19.9%), and American Indian/Alaskan Native (8.3%) were the most common races reported. Nearly half of victims (48.3%) were reported with an Unknown ethnicity, while 45.5% were Non-Hispanic and 6.2% were Hispanic. Nearly half of victims (45.8%) were between the ages of 20 - 39 years old.



There were 29,058 unique offenders of Domestic Abuse reported in 2023, of which 8,255 were Arrestees, 20,801 were Suspects, and 2 were Others. The majority of offenders were Male (72.0%). The most common races reported were White (63.2%), Black (24.9%), and American Indian/Alaskan Native (7.6%). Unknown and Non-Hispanic were the most common ethnicities reported, and 72.5% of offenders were between the ages of 20 and 49 years old (Table 1).

For the 31,077 victims, there were 34,411 victim-to-offender relationships reported. For each victim, a relationship to each offender is reported. Figure 2 displays the four categories of victim-to-offender relationships reported, of which 52.3% of offenders were Within Family, 42.2% of offenders were Outside Family but Known to Victim, 3.8% of offenders were Other (the victim was also the offender, or was a victim of another offense in the domestic abuse incident that did not require a relationship type to be reported), and 1.6% of offenders were Not Known by the Victim. Without regard to the four categories of victim-to-offender relationships, the most reported victim-to-offender relationships were Boyfriend/Girlfriend (25.3%), Spouse (11.6%), and Child (9.9%).

Figure 2. Number of Victim-to-Offender Relationships

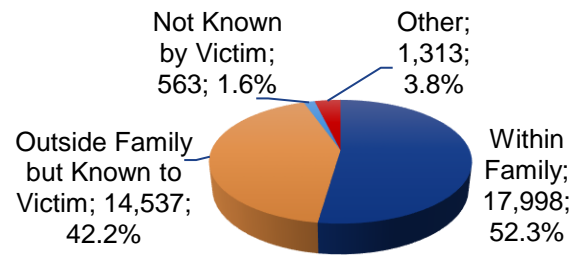


Table 1. Number of Victims and Offenders

Category	Victims	Offenders
Sex		
Female	21,763	8,001
Male	9,107	20,933
Unknown	207	124
Total	31,077	29,058
Age Range		
Under 18	5,384	2,203
18 - 19	1,147	985
20 - 29	6,960	7,235
30 - 39	7,260	8,378
40 - 49	4,884	5,444
50 - 59	2,726	2,595
60 - 69	1,563	1,102
70 & Over	710	335
Unknown	443	781
Total	31,077	29,058
Race		
American Indian / Alaskan Native	2,574	2,196
Asian	238	216
Black	6,197	7,235
Native Hawaiian or Other Pacific Islander	38	45
Unknown	998	991
White	21,032	18,375
Total	31,077	29,058
Ethnicity		
Hispanic	1,916	1,882
Non-Hispanic	14,141	13,778
Unknown	15,020	13,398
Total	31,077	29,058



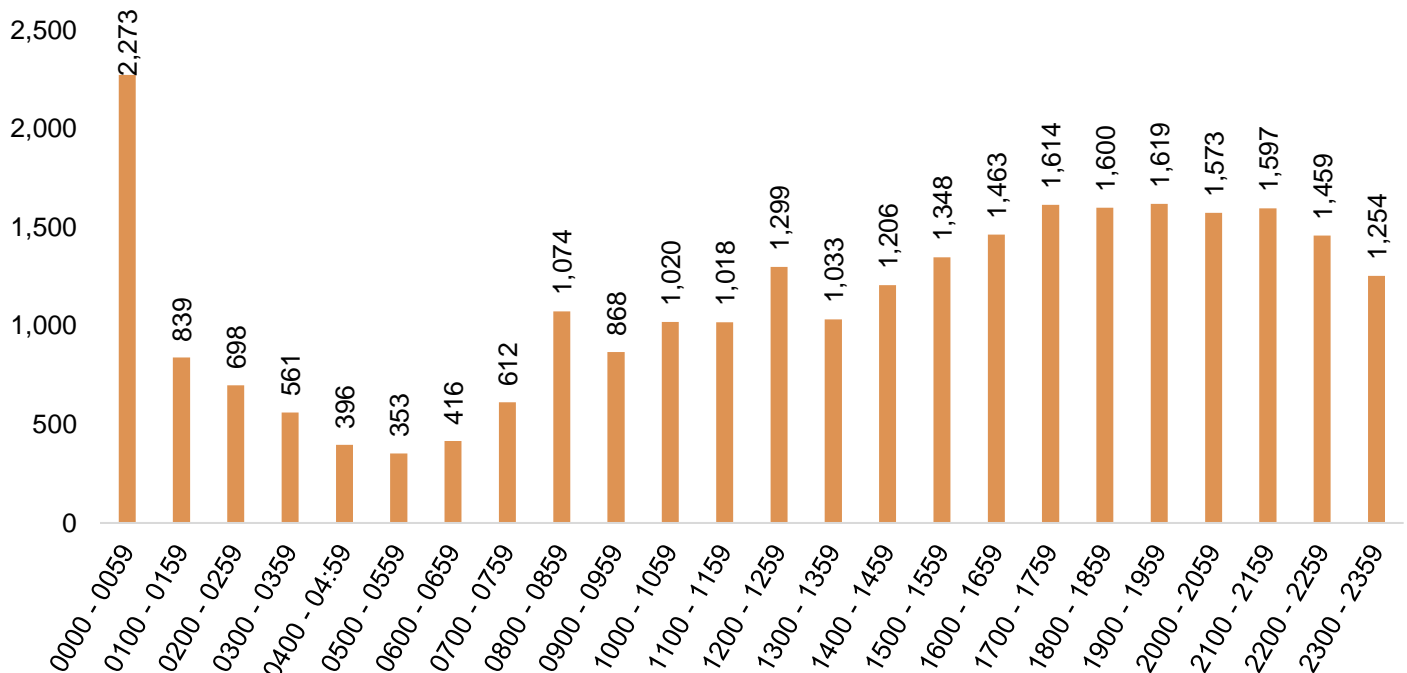
Figure 3 shows the number of Domestic Abuse incidents by Month and Day of Week. In 2023, the highest number of Domestic Abuse incidents occurred in July and August, and the lowest number occurred in February. Most Domestic Abuse incidents occurred on a Sunday or Saturday.

The most common time of day for Domestic Abuse incidents was 0000 - 0059; however, this could denote an unknown time of occurrence (Figure 4). There was a significant increase in the number of Domestic Abuse incidents at 0000 - 0059, 0800 - 0859, and 1200 - 1259. Nearly 50.0% of Domestic Abuse incidents occurred between 1500 - 2359.

Figure 3. Number of Incidents by Month and Day of Week

Month	Sun	Mon	Tue	Wed	Thu	Fri	Sat	Total
January	477	317	326	268	236	311	287	2,222
February	280	278	282	289	242	280	304	1,955
March	265	268	245	370	322	341	376	2,187
April	414	282	282	273	281	259	420	2,211
May	326	384	329	356	273	310	313	2,291
June	305	334	310	293	390	390	320	2,342
July	388	416	315	299	293	337	449	2,497
August	338	298	396	389	414	350	346	2,531
September	310	299	306	288	313	450	399	2,365
October	434	351	368	273	267	306	301	2,300
November	319	302	212	330	356	310	292	2,121
December	375	254	257	285	277	359	364	2,171
Total	4,231	3,783	3,628	3,713	3,664	4,003	4,171	27,193

Figure 4. Number of Incidents by Time of Day



Note: 0000 - 0059 could represent an unknown time of occurrence.



As shown in Table 2, there were 25,158 types of weapons reported in Domestic Abuse incidents. The most common type of weapon reported was Physical (75.6%). The remaining weapon types were reported as Objects (7.1%), Other (6.1%), None (5.7%), Firearms (4.1%), Unknown (1.4%), and Chemical (0.1%).

Table 2. Number of Weapon Types

Weapon Type	Count	% of Total
Physical	19,011	75.6
Objects	1,774	7.1
Other	1,545	6.1
None	1,431	5.7
Firearms	1,023	4.1
Unknown	342	1.4
Chemicals	32	0.1
Total	25,158	100.0

As previously mentioned, there were 30,905 unique offenses reported in the Domestic Abuse incidents. For those offenses, the majority (84.1%) occurred at a Living Place, which includes Residence/Home and Hotel/Motel. Lastly, Figure 5 displays the number of Domestic Abuse incidents per county in 2023 with the highest number occurring in Tulsa and Oklahoma County.

Table 3. Number of Offenses by Premise Type

Premise Type	No. of Offenses	% of Total
Living Place	25,988	84.1
Public Transportation/Road Ways	2,412	7.8
Commercial	847	2.7
Miscellaneous	804	2.6
Outdoors	253	0.8
School/College/Daycare	194	0.6
Government	179	0.6
Entertainment	120	0.4
Industrial Zones	54	0.2
Gathering Places	46	0.1
Financial Institutions	8	<0.1
Total	30,905	100.0

Figure 5. Domestic Abuse Incidents by County, 2023

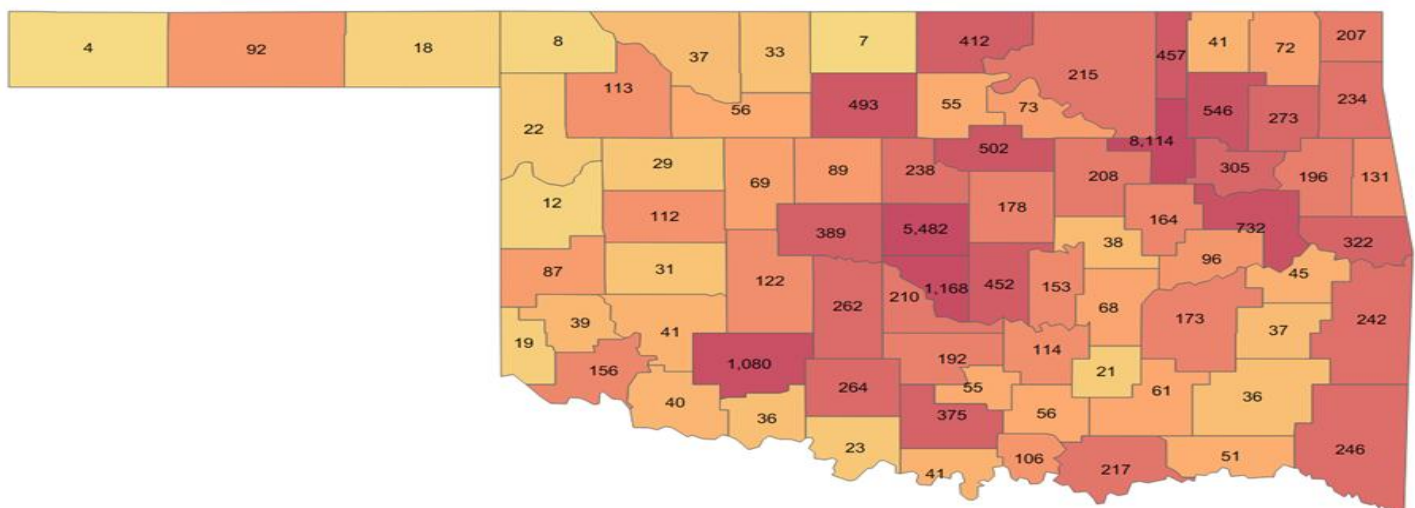




Table 4. Offenses reported in Domestic Abuse Incidents

Offense Types	Count
Crimes Against Persons	31,143
Murder & Non-Negligent Manslaughter	78
Negligent Manslaughter	7
Justifiable Homicide	1
Aggravated Assault	5,155
Simple Assault	19,490
Intimidation	4,332
Forcible Rape	522
Forcible Sodomy	179
Sexual Assault with Object	77
Forcible Fondling	834
Incest	7
Statutory Rape	1
Kidnapping/Abduction	460
Crimes Against Property	1,180
Arson	22
Bribery	2
Burglary/Breaking & Entering	312
Counterfeiting/Forgery	2
Destruction/Damage/Vandalism of Property	581
Embezzlement	5
Extortion/Blackmail	4
False Pretenses/Swindle/Confidence Game	3
Credit Card/ATM Fraud	5
Impersonation	4
Pocket-Picking	2
Purse-Snatching	3
Shoplifting	5
Theft from Building	54
Theft from Motor Vehicle	18
Theft of Motor Vehicle Parts or Accessories	3
All Other Larceny	79
Motor Vehicle Theft	51
Robbery	10
Stolen Property Offenses	15

Offense Types	Count
Crimes Against Society	638
Drug/Narcotic Violations	211
Drug Equipment Violations	118
Pornography/Obscene Materials	30
Weapon Law Violations	261
Animal Cruelty	18
Group B Offenses	1,330
Curfew/Loitering/Vagrancy Violations	2
Disorderly Conduct	148
Driving Under the Influence	71
Drunkenness	278
Family Offenses, Nonviolent	51
Liquor Law Violations	22
Runaway	6
Trespass of Real Property	24
All Other Offenses	728

- Crimes Against Persons:
 - Counted by the number of **unique** victims in the incident.
- Crimes Against Property:
 - Counted by the number of **unique** offenses in the incident with the exception of Motor Vehicle Theft.
 - Motor Vehicle Theft is counted by the number of **attempted** motor vehicle thefts and the number of **stolen** motor vehicles.
- Crimes Against Society:
 - Counted by the number of **unique** offenses in the incident.
- Group B Offenses:
 - **For this report:** counted by the **unique** arrestees in the incident associated with a Group B offense