



Statistical Analysis Center

Selected Findings: Domestic Abuse, 2022

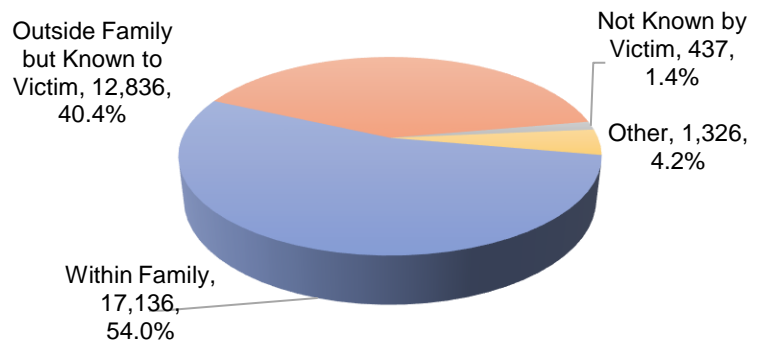
April 15, 2026

Per [Title 74 O.S. §150.12B](#), the Oklahoma State Bureau of Investigation is required to publish Domestic Abuse data. In 2022, law enforcement agencies reported 25,023 unique incidents that reported a domestic abuse-related offense and at least one domestic-related victim-to-offender relationship type. For this report, a domestic abuse offense includes at least one of the following: Murder and Non-Negligent Manslaughter, Negligent Manslaughter, Justifiable Homicide, Forcible Rape, Forcible Sodomy, Sexual Assault with an Object, Forcible Fondling, Aggravated Assault, Simple Assault, Intimidation, and Kidnapping/Abduction. For this report, domestic-related victim-to-offender relationships include: Adoptive/Foster Child, Adoptive/Foster Parent, Biological Parents of Same Child, Boyfriend/Girlfriend, Child, Child of Boyfriend/Girlfriend, Common-Law Spouse, Ex-Spouse, Grandchild, Grandparent, Homosexual Relationship, In-Law, Other Family Member, Parent, Roommate, Sibling, Spouse, Spouse of Ex-Spouse, Stepchild, Stepparent, and Stepsibling.

In 2021, law enforcement agencies reported 24,837 unique domestic abuse incidents; when compared to 2022, the increase was less than 1.0%. Within the 25,023 incidents, there were 28,722 unique victims, 27,997 unique offenses, and 26,746 unique offenders.

In 2022, there were 31,735 types of victim-to-offender relationships reported. If there is more than one victim/offender involved in the incident, more than one relationship type will be reported. Figure 1 displays four categories of victim-to-offender relationships: Within Family, Outside the Family but Known to the Victim, Other, and Not Known by the Victim. Due to the subject matter, the most common categories were Within Family and Outside Family but Known to Victim.

Figure 1. Number of Victim-to-Offender Relationships



Of the 28,722 victims, 70.1% were Female, 29.1% were Male, and 0.9% the sex was Unknown. White, Black, and American Indian/Alaskan Native were the most common races reported for victims (Table 1). Of the three options for ethnicity, 48.0% were Unknown, 46.8% were Non-Hispanic, and 5.2% were Hispanic. Approximately 60.7% of victims were between the ages of 20 and 49 years old, and 17.8% of victims were Under 18 years old.



In 2022, law enforcement agencies reported 26,746 unique offenders. Most offenders were reportedly Male (73.2%), and the most common races were White, Black, and American Indian/Alaskan Native (Table 1). For ethnicity, the majority of offenders were reported as either Non-Hispanic (50.5%) or Unknown (43.7%). Over 70.0% of offenders were between 20 and 49 years old. Of the 26,746 offenders, 19,297 were reported as a Suspect, and 7,449 were reported as an Arrestee.

In 2022, the highest number of Domestic Abuse incidents occurred in May, and the lowest number occurred in February and November (Figure 2). Most Domestic Abuse incidents occurred on either a Sunday or Saturday. The highest number of Domestic Abuse incidents occurred at midnight (0000 – 0059), with 2,172 incidents reported. However, this hour could indicate an unknown time of occurrence. Beginning at 1300, the number of domestic abuse incidents gradually increased. Lastly, Domestic Abuse incidents spiked at 0800 – 0859 and 1200 – 1259 before peaking at 2100 – 2159 (Figure 3).

The majority of domestic abuse incidents occurred at a Living Place or on Public Transportation/Road Ways (Table 2). In 2022, there were 23,745 types of weapons reported in Domestic Abuse incidents. The most common weapon type reported was Physical (i.e., Personal Weapons [Hands, Feet, Teeth, etc.], and Asphyxiation) (Table 3). Of all weapon type groups, Personal Weapons were the most common type reported in 2022, representing 74.5% of the 23,745 weapon types reported. The remaining weapon type groups reported were Objects, Other, None, Firearms, Unknown, and Chemical. Table 4 displays the number of crimes reported in the Domestic Abuse incidents.

Table 1. Number of Person Victims and Offenders

Category	Victims	Offenders
	Count	Count
Sex		
Female	20,120	7,057
Male	8,354	19,579
Unknown	248	110
Total	28,722	26,746
Age Range		
Under 18	5,111	1,838
18 - 19	1,007	902
20 - 29	6,336	6,726
30 - 39	6,674	7,805
40 - 49	4,429	5,061
50 - 59	2,610	2,417
60 - 69	1,483	982
70 & Over	653	297
Unknown	419	718
Total	28,722	26,746
Race		
American Indian / Alaskan Native	2,507	2,213
Asian	216	170
Black	5,388	6,204
Native Hawaiian or Other Pacific Islander	47	31
Unknown	925	919
White	19,639	17,209
Total	28,722	26,746
Ethnicity		
Hispanic	1,484	1,549
Non-Hispanic	13,455	13,504
Unknown	13,783	11,693
Total	28,722	26,746

Figure 2. Number of Incidents by Month and Day of Week

Month	Sunday	Monday	Tuesday	Wednesday	Thursday	Friday	Saturday	Total
January	349	327	247	261	227	249	400	2,060
February	268	248	293	239	237	254	267	1,806
March	310	231	357	273	340	252	268	2,031
April	330	250	264	264	271	343	334	2,056
May	440	360	323	275	283	284	340	2,305
June	338	287	292	345	326	263	312	2,163
July	408	289	262	261	241	391	364	2,216
August	310	358	333	352	283	278	332	2,246
September	339	292	287	251	348	333	362	2,212
October	356	332	250	267	236	283	359	2,083
November	264	215	331	311	237	256	268	1,882
December	299	256	216	240	322	295	335	1,963
Total	4,011	3,445	3,455	3,339	3,351	3,481	3,941	25,023



Figure 3. Number of Incidents by Time of Day

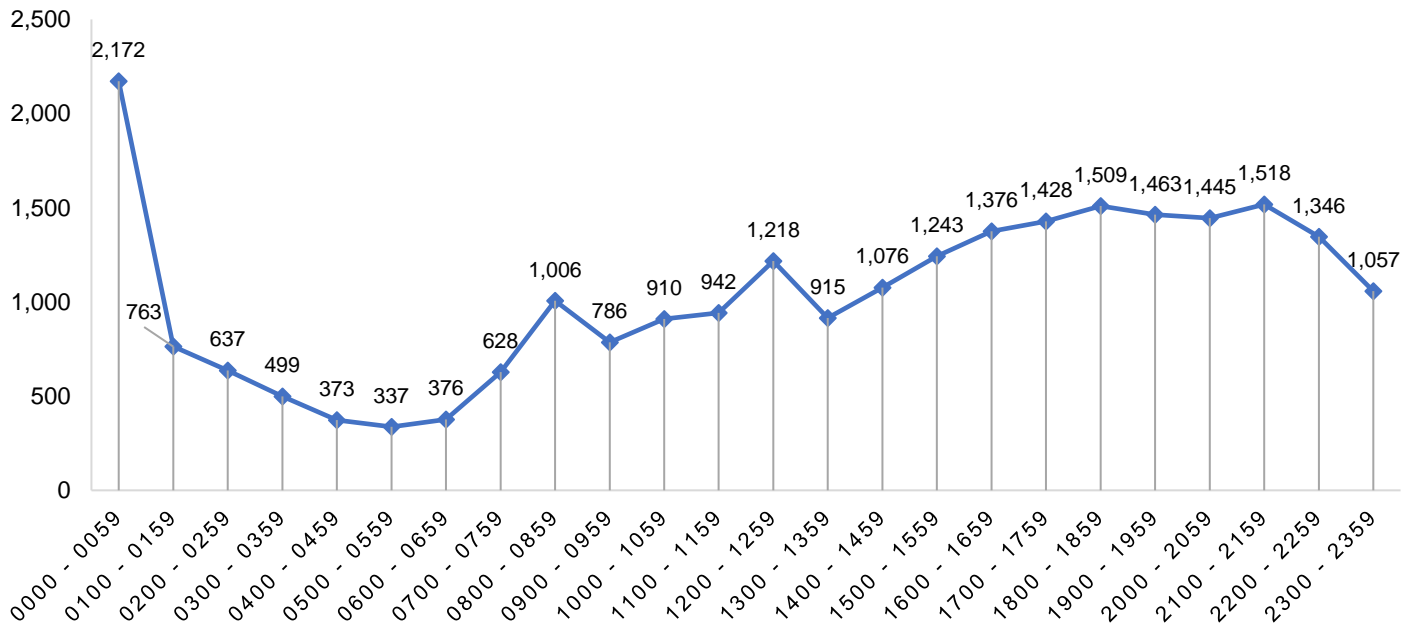


Table 2. Number of Premise Types

Premise Type Group	No. of Offenses
Living Place	23,930
Public Transportation/Road Ways	2,002
Commercial	692
Miscellaneous	664
Outdoors	215
Government	159
School/College/Daycare	145
Entertainment	110
Industrial Zones	49
Gathering Places	27
Financial Institutions	4
Total	27,997

Table 3. Number of Weapons Types

Weapon Type Groups	Count
Physical	18,093
Objects	1,628
Other	1,531
None	1,208
Firearms	910
Unknown	342
Chemicals	33
Total	23,745



Table 4. Number of Crimes Reported in Domestic Abuse Incidents

Offense Types	Count
Crimes Against Persons	28,747
Murder & Non-Negligent Manslaughter	74
Negligent Manslaughter	10
Justifiable Homicide	3
Aggravated Assault	4,894
Simple Assault	18,560
Intimidation	3,249
Forcible Rape	499
Forcible Sodomy	153
Sexual Assault with Object	80
Forcible Fondling	826
Incest	4
Statutory Rape	4
Kidnapping/Abduction	391
Crimes Against Property	947
Arson	22
Burglary/Breaking & Entering	231
Counterfeiting/Forgery	2
Destruction/Damage/Vandalism of Property	464
Embezzlement	5
Extortion/Blackmail	2
False Pretenses/Swindle/Confidence Game	4
Credit Card/ATM Fraud	5
Impersonation	7
Hacking/Computer Invasion	1
Pocket-Picking	1
Purse-Snatching	1
Shoplifting	5
Theft from Building	30
Theft from Motor Vehicle	9
All Other Larceny	75
Motor Vehicle Theft	56
Robbery	8
Stolen Property Offenses	19

Offense Types	Count
Crimes Against Society	553
Drug/Narcotic Violations	189
Drug Equipment Violations	92
Pornography/Obscene Materials	22
Prostitution	1
Assisting or Promoting Prostitution	1
Weapon Law Violations	232
Animal Cruelty	16
Group B Offenses	985
Curfew/Loitering/Vagrancy Violations	1
Disorderly Conduct	104
Driving Under the Influence	48
Drunkenness	185
Family Offenses, Nonviolent	27
Liquor Law Violations	9
Runaway	2
Trespass of Real Property	17
All Other Offenses	592

- Crimes Against Persons:
 - Counted by the number of **unique** victims in the incident.
- Crimes Against Property:
 - Counted by the number of **unique** offenses in the incident with the exception of Motor Vehicle Theft.
 - Motor Vehicle Theft is counted by the number of **attempted** motor vehicle thefts and the number of **stolen** motor vehicles.
- Crimes Against Society:
 - Counted by the number of **unique** offenses in the incident.
- Group B Offenses:
 - **For this report:** counted by the **unique** arrestees in the incident associated with a Group B offense



Figure 4. Number of Incidents per County

