



OKLAHOMA MEDICAL MARIJUANA AUTHORITY

PROOF OF DISTANCE FROM A SCHOOL

FOR DISPENSARIES

Revised

April 16, 2019

OMMA.OK.GOV



REQUIREMENTS

1. Title 63 O.S. § 425(G) prohibits medical marijuana dispensaries from operating within one thousand (1,000) feet from public or private schools.
2. Applicants for a dispensary license must attest and submit supporting documentation which demonstrates the premises of a potential business site will be 1,000 feet from any public or private school.
3. This distance is measured by the straight-line (shortest) distance from the property line of the dispensary to any entrance of a school. Any school that holds classes or activities for students, such as field houses, track/practice fields or agriculture classes, is included in this restriction.
4. In order to facilitate the submission of proof of this requirement, applicants for licenses may use the National Center for Education Statistics (NCES) interactive MapEd tool to research their proximity to a school. Instructions for using this tool are provided in this document.
5. Applicants are encouraged to use multiple tools and resources to ensure compliance with this requirement. Applicants with questions about schools near their location may want to contact the local school district.
6. The OMMA must be able to verify the documentation provided by the dispensary. Officials use satellite measuring tools to verify the specific distance from the closest point of the dispensary's property line to the closest entrance of any school. If this distance is less than 1,000 feet, the dispensary application will be denied, and the application fee will not be refunded.

For general assistance, please contact OMMA at OMMADispensary@ok.gov.

For technical help using the system, please refer to the NCES web page.

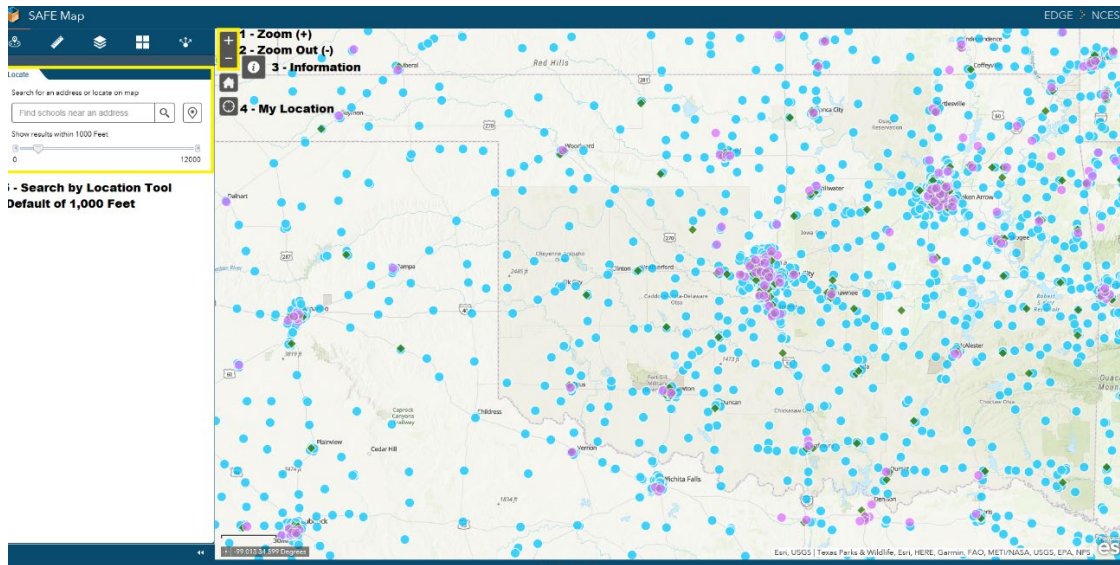
NOTE: It is the responsibility of the applicant/licensee to ensure the dispensary is not within 1,000 feet of any applicable school entrance. This document provides one tool that may be useful, but applicants are encouraged to use multiple tools (such as maps) and resources to ensure compliance with this requirement.

Disclaimer: This tool is for reference purposes and the OMMA does not assume any responsibility for technical errors, inaccuracies or other issues that may arise from its usage.


Resource Overview

The following instructions provide a recommended method by which a retail dispensary can determine the relative distance of their premises to public and private schools and submit a screen capture to provide proof. The screen capture below (Figure 1) outlines the features of the SAFE Map tool.

Figure 1



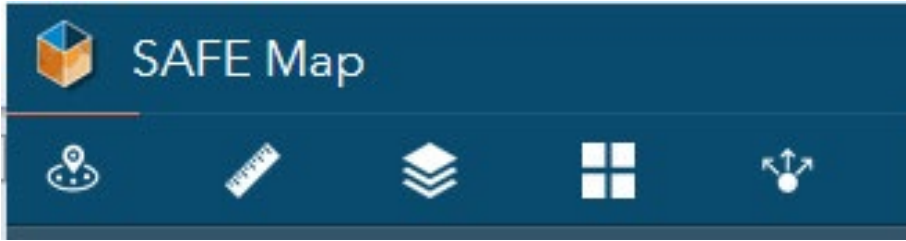
SAFEMap Interactive Map Features (Figure 1)






1. Zoom (+): Click here to navigate the map to a smaller area (zoom in).
2. Zoom (-): Click here to navigate the map to a larger area (zoom out).
3. Information: Click here to obtain information about the tool. Contact NCES for further assistance.
4. My Location: The tool may use network information to determine the approximate location of the user of the tool. Users should be aware that the location selected by the system may depend on several factors.
5. Search by Location Tool: Use the search box to type in an address. The “Set Location” tool, as shown by the  symbol allows users to click on a point on the map to determine the nearest locations.

SAFEMap Interactive Map Menu Options (Figure 2)

The upper left portion of the screen for the SAFEMap will have the following menu:

Figure 2

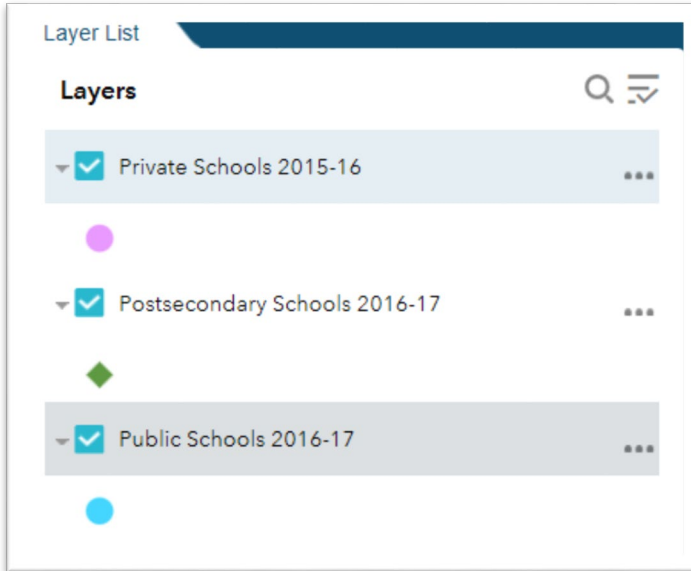


Locate	Measurement	Layer List	Basemap Gallery	Share
 <p>Allows for users to type an address to search for location</p>	 <p>Allows for users to draw a line on the map to measure distance between points</p>	 <p>Allows for points to be displayed on the map</p>	 <p>Allows for users to choose between satellite and other forms of imagery</p>	 <p>Allows users to share or embed a link to a map created via SAFEMap</p>

School Symbols

The SafeMap Tool symbolizes points representing schools as the following shapes (Figure 3). As defined in rule at OAC 310:681-1-4, public and private schools are the relevant locations for a dispensary's compliance.

Figure 3

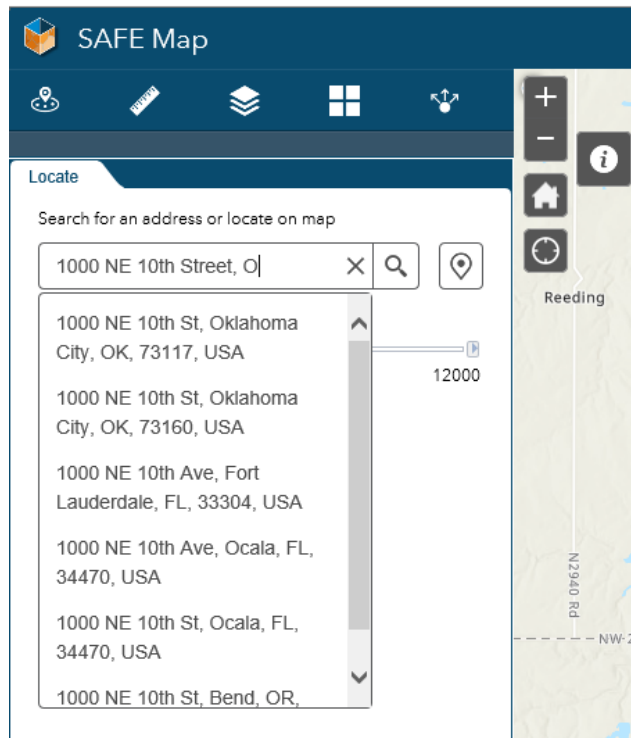


Note: Postsecondary schools are not required as an educational facility type for business locations to demonstrate their location compliance, although the system will automatically display these sites.

Public and Private School Location Instructions

1. Open your web browser and enter the following URL:
Link: <https://nces.ed.gov/programs/maped/safemap/>
2. The URL will open the national NCES SAFE Map (see [Figure 1](#)). Interactive features will be visible on the left sides of the screen. Click “OK” to agree to use the map.
3. On the upper left side of the screen, under the “Locate” tab, click on the “Find schools near an address” search bar and type the address of the potential retail dispensary location. Include city, state and zip code, if known. [Figure 4](#) shows an example for reference. Click the magnifying glass or press enter to zoom to the address.

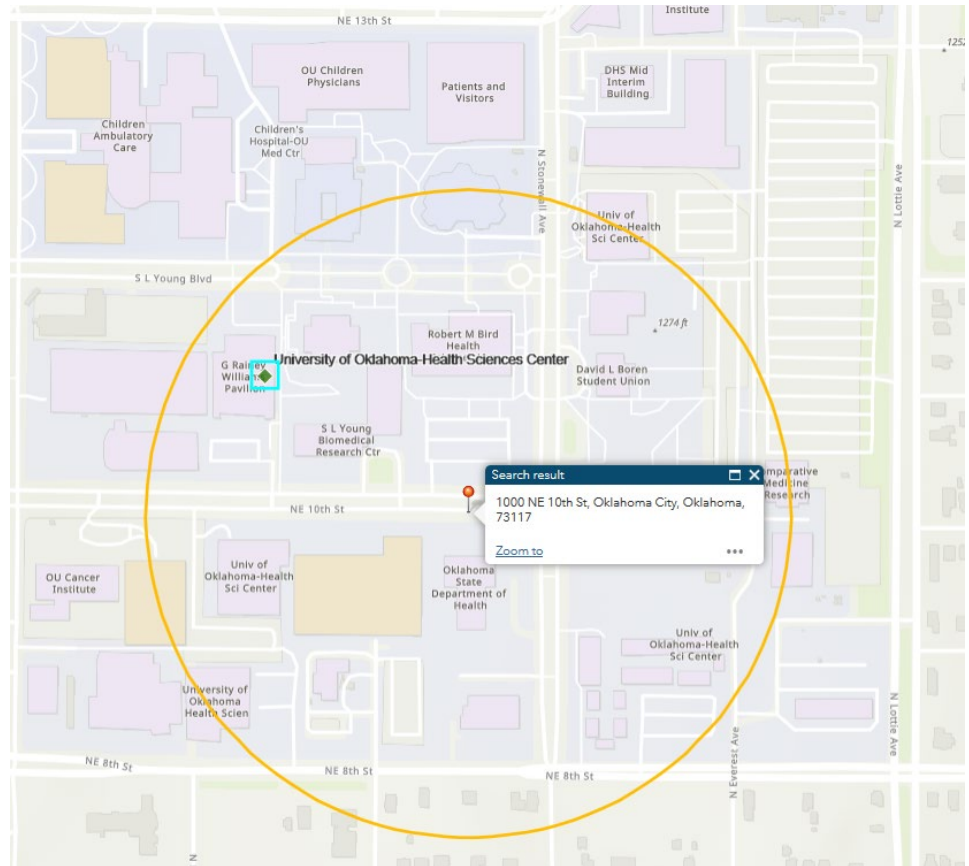
Figure 4



4. **After entering the address**, the map will zoom to a labeled marker surrounding streets and other known features on the map that are near the **Search Result** marker. The placement of the point in [Figure 5](#) is correct, based on the accurate Oklahoma City landmarks and streets. Retry **Step 4** if the search result does not appear to be accurate.

5. Review the map for the orange range circle, which will illustrate a distance of 1,000 feet from the marker at the center. The search result should return an address that matches with what was entered on the “Locate” tab. School symbols within the range of the distance will be marked with a symbol and within the circular boundary, as shown in [Figure 5](#):

Figure 5 -
Example of ONE post-secondary
school, but NO Public or Private
School within 1000 feet



- Review the map for examples of schools located within the orange range circle, which clarifies the distance of schools from the selected address. If the search result does not return any schools within a distance of 1,000 feet, "No Result" will be displayed on the left-hand side of the screen and no symbol will be visible (Figure 6). In instances such as Figure 7, where a school is <1,000 feet, the left-hand side of the map should display information about the school and an approximate distance.

Figure 6 - Example of NO public/private school within 1000 Feet

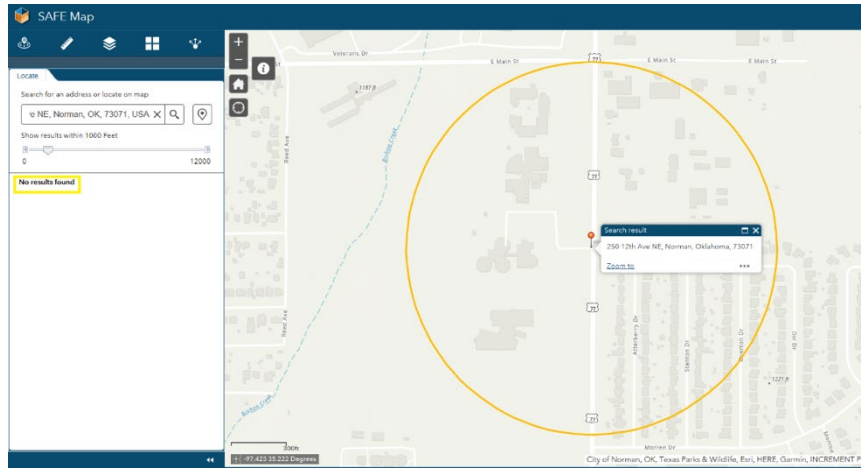


Figure 7 - Example of ONE School within 1000 Feet

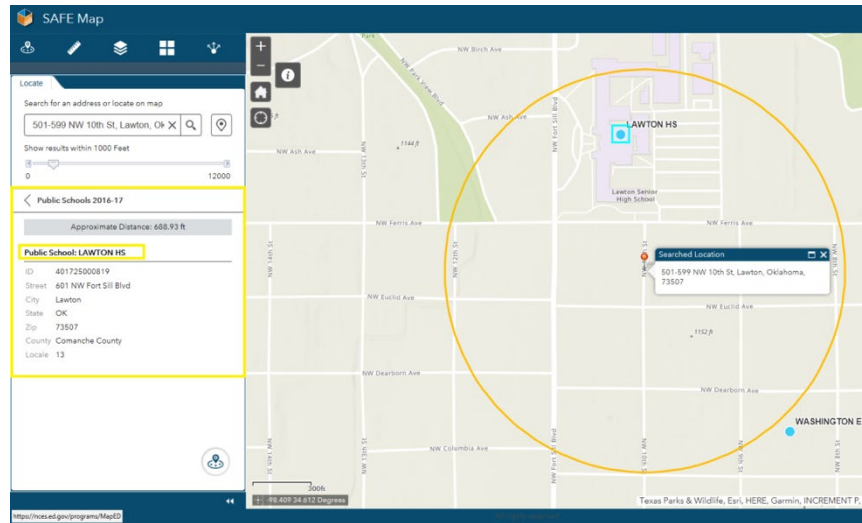
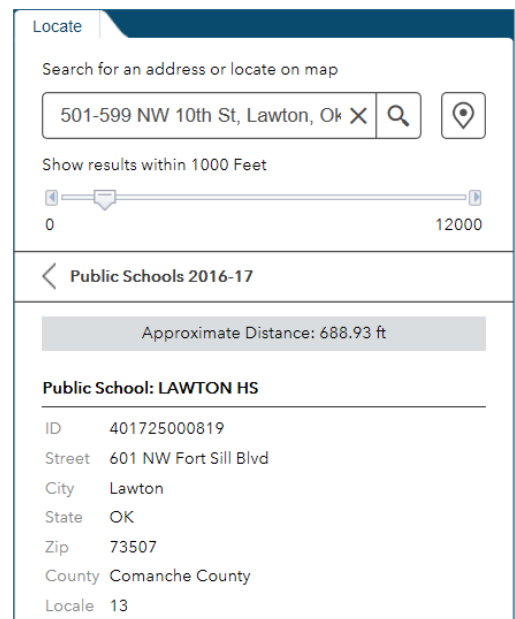


Figure 8- Public School Details

Note the example figure, which corresponds to a public high school in Lawton, OK:



7. After viewing an accurate picture of a searched address and surrounding locations, use the computer's "Screen Capture" function to generate an image of the MapEd Interactive Map screen.¹ Valid screenshots must show an accurate address marker, with an appropriate level of street-visible detail as shown in [Figures 5-7](#).
8. After ensuring a clear image has been captured, save the image file to the computer as a ".jpg" or ".png" format. **Name the file** in a format that includes the name of the business and "Public School_MapEd" in the title.

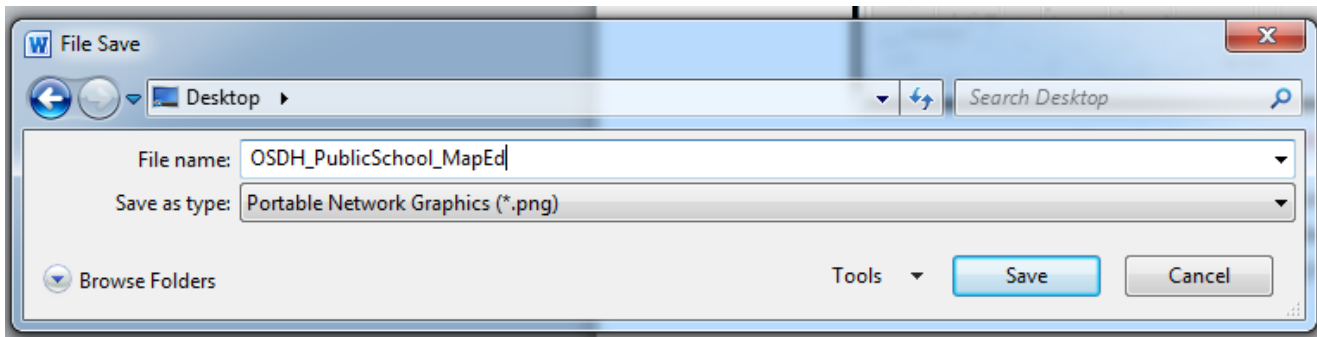


Figure 9
Example: "OSDH_PublicSchool_MapEd"

9. **Upload the image** to the user account in the application system, following the appropriate Complaia system guidelines.

1 For help with screenshots, please review the following resources:
Windows: [Copy the window or screen contents](#)
Mac: [Apple Support: How to take a screenshot on your Mac](#)

Users with a mobile phone may use a similar function to capture screen contents. Refer to your mobile phone's documentation for details.