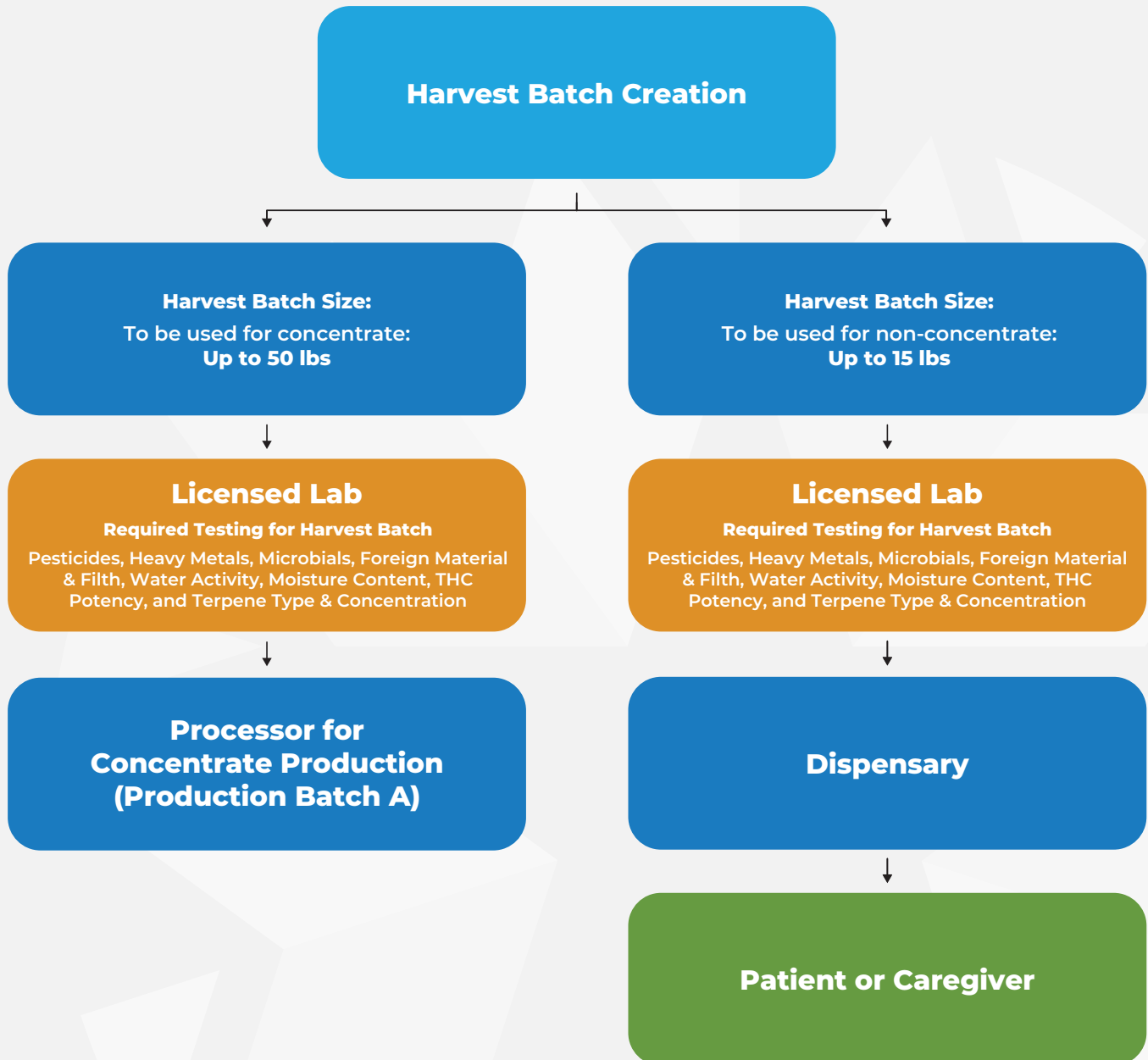




What is it?	Who is making it?	Which testing process do I follow?	Where is the testing process found?
<b>Flower for Dispensary Sales</b> <i>Ex: sold in jars at dispensary</i>	Grower	Harvest Batch	Page 2
<b>Flower for Concentrate Production</b> <i>Ex: sold as biomass to processor</i>	Grower	Harvest Batch	Page 2
<b>Concentrate for Dispensary Sales</b> <i>Ex: wax, shatter</i>	Processor	Production Batch A	Page 3
<b>Concentrate for Processing at Another Facility</b> <i>Ex: distillate</i>	Processor	Production Batch A	Page 3
<b>Concentrate &amp; Final Product Made at Same Facility</b> <i>Ex: vapes, topicals, tinctures, cookies, brownies, candies, gummies, beverages, etc.</i>	Processor	Concentrate & Final Product Combined	Page 4
<b>Final Product</b> <i>Ex: vapes, topicals, tinctures, cookies, brownies, candies, gummies, beverages, etc.</i>	Processor	Production Batch B	Page 5
<b>Infused Pre-Rolls</b> <i>Ex: Pre-Rolls with added kief, RSO, flavors, or other ingredients</i>	Processor	Production Batch B	Page 5
<b>Non-Infused Pre-Rolls ≤ 1g*</b>	Dispensary, Grower, Processor	Non-Infused Pre-Rolls	Grower, Dispensary Page 6 Processor Page 7
<b>Non-Infused Pre-Rolls</b>	Processor	Non-Infused Pre-Rolls	Page 7
<b>Kief</b> <i>*Kief sold as a standalone product</i>	Grower, Processor	Kief	Page 8

**Note: Only the license type listed in the "Who made it?" category can make that type of product.**

**\*Net weight of pre-roll includes only flower, shake, or trim and not unflavored paper, cone, tip, or filter.**





## Standard Harvest Batch Testing

**Harvest Batch Size:**  
To be used for concentrate:  
**Up to 50 lbs**

### Licensed Lab

**Required Testing for Harvest Batch**  
Pesticides, Heavy Metals, Microbials, Foreign Material & Filth, Water Activity, Moisture Content, THC Potency, and Terpene Type & Concentration

## Production Batch A Testing

### Processor

**(Production Batch A)**  
Concentrate Batch Size:  
**Up to 4L for liquids or 9 lbs. for Non-liquids**

### Licensed Lab

**Required Testing for Production Batch A**  
Microbials, Mycotoxins, Residual Solvents & Chemical Residue, Metals, Pesticides, THC Potency, Terpene Type & Concentration, Foreign Material & Filth

**Processor for Final Processing**  
**(Production Batch B)**

**Dispensary**

**Patient or Caregiver**



## Standard Harvest Batch Testing

**Harvest Batch Size:**  
To be used for concentrate:  
**Up to 50 lbs**

### Licensed Lab

**Required Testing for Harvest Batch**  
Pesticides, Heavy Metals, Microbials, Foreign Material & Filth, Water Activity, Moisture Content, THC Potency, and Terpene Type & Concentration

## Concentrate & Final Product Combined Testing

**Processor  
(Production Batch A)**  
Concentrate Batch Size:  
**Up to 4L for liquids or 9 lbs. for Non-liquids**

### Licensed Lab tests for potency\*

\*Suggested for final product batch size

**The same Processor makes the final product  
(Production Batch B)**  
Final Product Batch Size:  
**Up to 1000g THC**

### Licensed Lab

**Required Testing for Production Batch A**  
Microbials, Mycotoxins, Residual Solvents & Chemical Residue, Metals, Pesticides, THC Potency, Terpene Type & Concentration, Foreign Material & Filth

### Dispensary

**Patient or Caregiver**



## Standard Harvest Batch Testing

**Harvest Batch Size:**  
To be used for concentrate:  
**Up to 50 lbs**

### Licensed Lab

**Required Testing for Harvest Batch**  
Pesticides, Heavy Metals, Microbials, Foreign Material & Filth, Water Activity, Moisture Content, THC Potency, and Terpene Type & Concentration

## Production Batch A Testing

**Processor (Production Batch A)**  
Concentrate Batch Size:  
**Up to 4L for liquids or 9 lbs. for Non-liquids**

### Licensed Lab

**Required Testing for Production Batch A**  
Microbials, Mycotoxins, Residual Solvents & Chemical Residue, Metals, Pesticides, THC Potency, Terpene Type & Concentration, Foreign Material & Filth

## Production Batch B Testing

**Processor for Final Processing (Production Batch B)**  
Final Product Batch size:  
**Up to 1000g THC**

### Licensed Lab

**Required Testing for Production Batch B**  
Microbials, Mycotoxins, Residual Solvents & Chemical Residue\*, Metals\*, Pesticides, THC Potency, and Terpene Type & Concentration, Foreign Material & Filth

### Dispensary

**Patient or Caregiver**

\*If the cannabis concentrate used to make an infused product was tested for metals, solvents and chemical residue and test results indicate the lot was within established limits, then the infused product does not require additional testing for metals, solvents and chemical residue.



## Standard Harvest Batch Testing

**Harvest Batch Size:**  
To be used for non-concentrates:  
**Up to 15 lbs**

**Licensed Lab**  
**Required Testing for Harvest Batch**  
Pesticides, Heavy Metals, Microbials, Foreign  
Material & Filth, Water Activity, Moisture Content,  
THC Potency, and Terpene Type & Concentration

## Non-Infused Pre-Rolls Growers and Dispensaries Testing

**Grower or Dispensary creates  
Non-Infused Pre-Rolls ≤ 1 gram  
from a single harvest batch.**  
Batch size:  
**Up to 15 lbs**

**Licensed Lab**  
**Conducts required tests for Non-Infused  
Pre-Rolls ≤ 1 gram from a single batch**  
Heavy Metals, Foreign Material & Filth,  
THC Potency

**Dispensary**

**Patient or Caregiver**

**Grower or Dispensary collects up to 15 lb of  
flower from multiple harvest batches to  
create a new, homogenized batch and then  
creates Non-Infused Pre-Rolls ≤ 1 gram.**

**Licensed Lab**  
**Required Testing for Harvest Batch**  
Pesticides, Heavy Metals, Microbials, Foreign  
Material & Filth, Water Activity, Moisture  
Content, and THC & Terpene Potency

**Dispensary**

**Patient or Caregiver**



## Standard Harvest Batch Testing

**Harvest Batch Size:**  
To be used for non-concentrates:  
**Up to 15 lbs**

### Licensed Lab

**Required Testing for Harvest Batch**  
Pesticides, Heavy Metals, Microbials, Foreign Material & Filth, Water Activity, Moisture Content, THC Potency, and Terpene Type & Concentration

## Non-Infused Pre-Rolls Processors Testing

**Processor creates Non-Infused Pre-Rolls from a single harvest batch.**  
Batch size:  
**Up to 15 lbs**

### Licensed Lab

**Conducts required tests for Non-Infused Pre-Rolls from a single batch**  
Heavy Metals, Foreign Material & Filth, THC Potency

**Dispensary**

**Patient or Caregiver**

**Processor collects up to 15 lb of flower from multiple harvest batches to create a new homogenized batch and then creates Non-Infused Pre-Rolls.**

### Licensed Lab

**Required Testing for Harvest Batch**  
Pesticides, Heavy Metals, Microbials, Foreign Material & Filth, Water Activity, Moisture Content, THC Potency, and Terpene Type & Concentration

**Dispensary**

**Patient or Caregiver**



## Standard Harvest Batch Testing

**Harvest Batch Size:**  
To be used for non-concentrates:  
**Up to 15 lbs**



**Licensed Lab**  
**Required Testing for Harvest Batch**  
Pesticides, Heavy Metals, Microbials, Foreign Material & Filth, Water Activity, Moisture Content, THC Potency, and Terpene Type & Concentration



## Kief Testing

**Homogenized Kief from multiple batches**  
**Kief Batch Size:**  
**Up to 15 lbs**



**Licensed Lab**  
**Required Testing for Kief**  
Pesticides, Heavy Metals, Microbials, Foreign Material & Filth, Water Activity, Moisture Content, THC Potency, and Terpene Type & Concentration



**Dispensary**



**Patient or Caregiver**