

To: All interested suppliers

Subject: Request for Information (RFI) – Operation of the OMES Motor Pool and Fleet Lot

This is not a solicitation. The State of Oklahoma Office of Management and Enterprise Services is requesting information regarding the operation of the OMES Motor Pool and Fleet Lot.

The State of Oklahoma invites all interested parties to submit a written response to this request for information (RFI), which is being sought strictly for the purpose of gaining knowledge about the services available with an estimate of their corresponding costs and **should not be construed as an intent, commitment or promise to acquire services, supplies or solutions offered. No contract will result from any response to this RFI.**

The State of Oklahoma is currently exploring options to outsource the management and operation of the OMES Motor Pool and Fleet Lot. The state has an ongoing requirement to rent vehicles to agencies to support diverse projects across the state. We are requesting information regarding your capabilities, pricing and services offered in the vehicle rental industry.

Scope of services:

1. Vehicle inventory: The state requires daily weekday use of 50-90 vehicles. All vehicles should be late models and in good repair, with air conditioning. Vehicle inventory should represent a mix of sedans, SUVs, trucks and passenger vans.
2. The company will provide all managerial expertise, administrative services, direct labor personnel, vehicles, communication equipment, all running expenses, vehicle maintenance, service and insurance of such vehicles that are necessary to accomplish all work required by this RFI. The state requests that pricing information includes fuel and toll prices for vehicles being rented by state agencies.
3. The company will lease, from the state, an office located at 2616 N. Stiles Ave. The location consists of two floors of offices encompassing a total of 458 usable square feet, as well as use of 125 parking spaces within the Motor Pool and Fleet Lot and overflow parking area, as shown in Attachment A. The company will operate at minimum from 7 a.m. to 5:30 p.m. every Monday through Friday, except state holidays.
4. The company may lease vehicles to nonstate personnel from the Motor Pool and Fleet Lot.

Information submitted in response to this RFI will become the property of the State of Oklahoma.

The State of Oklahoma will not pay for any information requested herein, nor is it liable for any cost incurred by the vendor. RFI responses must be received no later than 3 p.m. CDT on Aug. 29, 2025, by email delivery to:

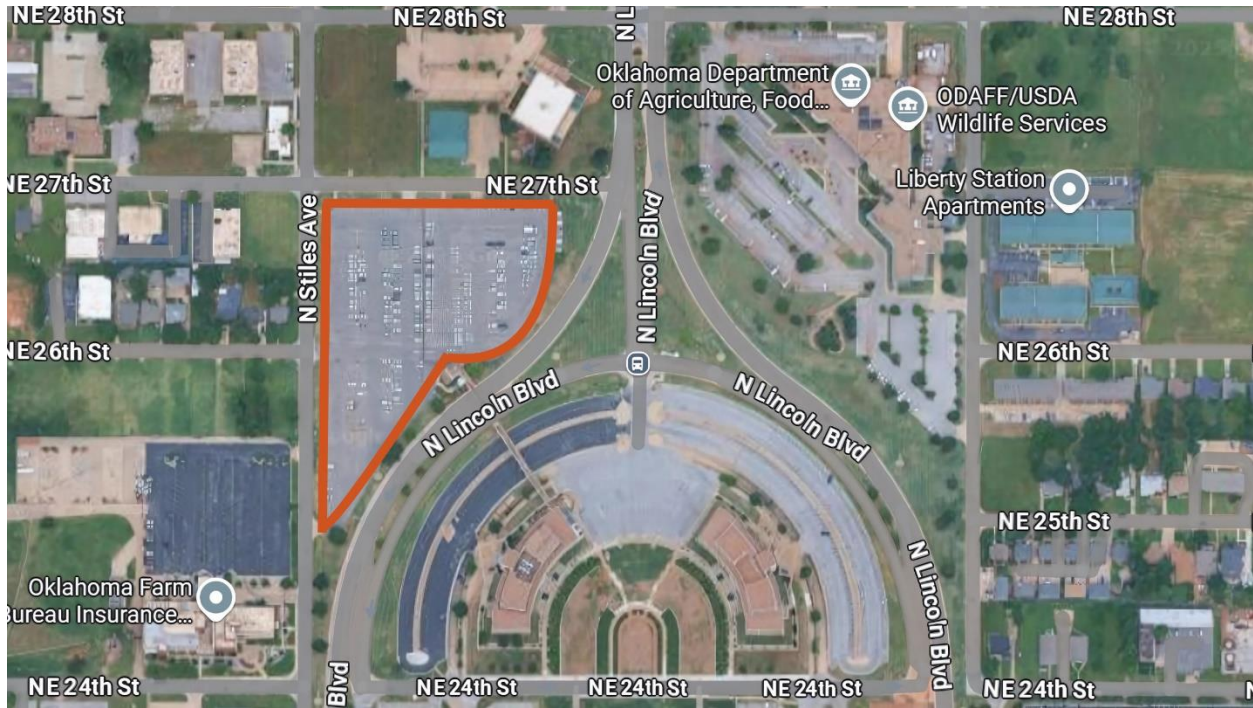
Nate Pumphrey
1915 N. Stiles Ave.
Oklahoma City, OK 73105
Email: nathan.pumphrey@omes.ok.gov

Any questions may be directed by email to the person listed above.

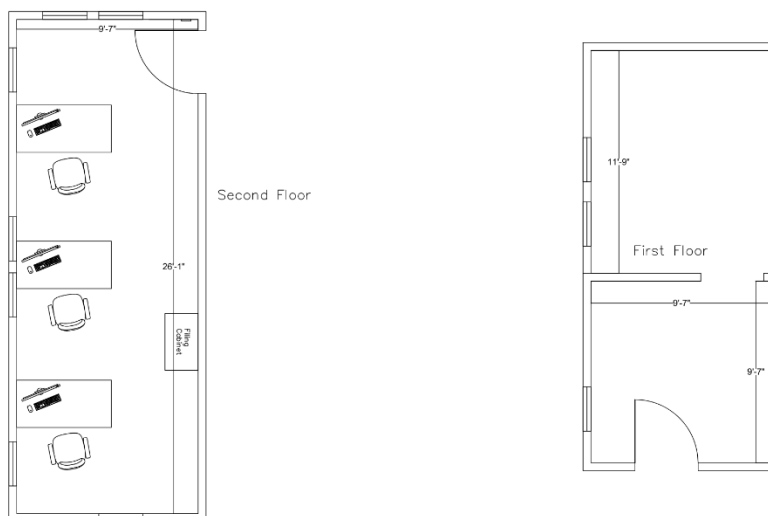
We appreciate your response to this request.

Attachment A

Location: Highlighted below in orange is the location of OMES Motor Pool and Fleet Lot. The vendor will have use of 125 spaces in this area.



Office space floor plan:



MC Connors - Skybridge - Fleet Management Office

Preliminary, Not for Construction

Current as of: 8/1/2023

